

## **Stormwater Pollution Prevention Plan**

**for:**

HIGHWAY 58 BORROW PIT  
5231 HIGHWAY 58  
CHATTANOOGA, TENNESSEE 37416

### **SWPPP Contact(s):**

STEVE WILLIAMS  
STEVE WILLIAMS CONSTRUCTION  
2300 20<sup>TH</sup> STREET, NE  
CLEVELAND, TENNESSEE 37323  
423-618-5579  
SWC@BELLSOUTH.NET

### **SWPPP Preparation Date:**

01/24/2020

---

## Contents

---

<b>SECTION 1: FACILITY DESCRIPTION AND CONTACT INFORMATION</b> .....	<b>1</b>
1.1 Facility Information .....	1
1.2 Contact Information/Responsible Parties.....	2
1.3 Stormwater Pollution Prevention Team .....	3
1.4 Activities at the Facility .....	3
1.5 General Location Map .....	4
1.6 Site Map.....	5
<b>SECTION 2: POTENTIAL POLLUTANT SOURCES</b> .....	<b>6</b>
2.1 Industrial Activity and Associated Pollutants .....	6
2.2 Spills and Leaks.....	7
2.3 Non-Stormwater Discharges Documentation .....	7
2.4 Salt Storage .....	8
2.5 Sampling Data Summary .....	8
<b>SECTION 3: STORMWATER CONTROL MEASURES</b> .....	<b>8</b>
3.1 Minimize Exposure.....	9
3.2 Good Housekeeping.....	10
3.3 Maintenance.....	10
3.4 Spill Prevention and Response.....	10
3.5 Erosion and Sediment Controls .....	11
3.6 Management of Runoff .....	11
3.7 Salt Storage Piles or Piles Containing Salt .....	11
3.8 MSGP Sector-Specific Non-Numeric Effluent Limits .....	11
3.9 Employee Training .....	12
3.10 Non-Stormwater Discharges .....	12
3.11 Waste, Garbage and Floatable Debris .....	12
3.12 Dust Generation and Vehicle Tracking of Industrial Materials .....	12
<b>SECTION 4: SCHEDULES AND PROCEDURES FOR MONITORING</b> .....	<b>13</b>
<b>SECTION 5: INSPECTIONS</b> .....	<b>15</b>
<b>SECTION 6: DOCUMENTATION TO SUPPORT ELIGIBILITY CONSIDERATIONS UNDER OTHER FEDERAL LAWS</b> .....	<b>16</b>
6.1 Documentation Regarding Endangered Species .....	16
6.2 Documentation Regarding Historic Properties.....	16
6.3 Documentation Regarding NEPA Review (if applicable) .....	16
<b>SECTION 7: SWPPP CERTIFICATION</b> .....	<b>16</b>
<b>SECTION 8: SWPPP MODIFICATIONS</b> .....	<b>18</b>
<b>SWPPP ATTACHMENTS</b> .....	<b>19</b>
Attachment A – General Location Map	
Attachment B – Site Maps	
Attachment C – 2008 MSGP	

## SECTION 1: FACILITY DESCRIPTION AND CONTACT INFORMATION

### 1.1 Facility Information

**Instructions:**

- You will need the information from this section to complete your NOI.
- For further instruction, refer to the 2008 MSGP NOI form and instructions – specifically sections C and D of the NOI. A copy of the 2008 MSGP NOI is available at [www.epa.gov/npdes/stormwater/msgp](http://www.epa.gov/npdes/stormwater/msgp) (Appendix G of the permit)
- Detailed information on determining your site's latitude and longitude can be found at [www.epa.gov/npdes/stormwater/latlong](http://www.epa.gov/npdes/stormwater/latlong).
- You must include a copy of the 2008 MSGP, or a reference or link to where a copy can be found, in Attachment C of your SWPPP.

#### Facility Information

Name of Facility: HIGHWAY 58 BORROW PIT

Street: 5231 HIGHWAY 58

City: CHATTANOOGA

State: TN

ZIP Code: 37416

County or Similar Subdivision: HAMILTON

Permit Tracking Number: \_\_\_\_\_ (if covered under a previous permit)

Latitude/Longitude (Use **one** of three possible formats, and specify method)

Latitude:

Longitude:

1. 35 ° 06 ' 12" N (degrees, minutes, seconds)

1. 86 ° 10 ' 08" W (degrees, minutes, seconds)

2. \_\_\_ ° \_\_\_ ' \_\_\_ " N (degrees, minutes, decimal)

2. \_\_\_ ° \_\_\_ ' \_\_\_ " W (degrees, minutes, decimal)

3. \_\_\_ . \_\_\_ ° N (decimal)

3. \_\_\_ . \_\_\_ ° W (decimal)

Method for determining latitude/longitude (check one):

USGS topographic map (specify scale: \_\_\_\_\_)

EPA Web site

GPS

Other (please specify): \_\_\_\_\_

Is the facility located in Indian Country?  Yes  No

If yes, name of Reservation, or if not part of a Reservation, indicate "not applicable." \_\_\_\_\_

Is this facility considered a Federal Facility?

Yes

No

Estimated area of industrial activity at site exposed to stormwater: 13 (acres)

#### Discharge Information

Does this facility discharge stormwater into an MS4?  Yes  No

If yes, name of MS4 operator: CITY OF CHATTANOOGA

Name(s) of water(s) that receive stormwater from your facility UN-NAMED TRIB TO CHICKAMAUGA LAKE

Are any of your discharges directly into any segment of an "impaired" water?  Yes  No

If Yes, identify name of the impaired water (and segment, if applicable): \_\_\_\_\_

Identify the pollutant(s) causing the impairment: \_\_\_\_\_

For pollutants identified, which do you have reason to believe will be present in your discharge? \_\_\_\_\_

For pollutants identified, which have a completed TMDL? \_\_\_\_\_

Do you discharge into a receiving water designated as a Tier 2 (or Tier 2.5) water?  Yes  No

Are any of your stormwater discharges subject to effluent guidelines?  Yes  No

If Yes, which guidelines apply? \_\_\_\_\_

Primary SIC Code or 2-letter Activity Code: 14  
(refer to Appendix D of the 2008 MSGP)

Identify your applicable sector and subsector: \_\_\_\_\_

## 1.2 Contact Information/Responsible Parties

### Instructions:

- List the facility operator(s), facility owner, and 24 hour emergency contact. Indicate respective responsibilities, where appropriate.
- You will need the information from this section of the SWPPP Template for your NOI.
- Refer to Section B of the NOI instructions (available in Appendix G of the 2008 MSGP).

### Facility Operator (s):

Name: STEVE WILLIAMS  
Address: 2300 20<sup>TH</sup> STREET, NE  
City, State, Zip Code: CLEVELAND, TENNESSEE 37323  
Telephone Number: 423-618-5579  
Email address: SWC@BELLSOUTH.NET  
Fax number: -----

### Facility Owner (s):

Name: LINDA WILLIAMS  
Address: 2300 20<sup>TH</sup> STREET, NE  
City, State, Zip Code: CLEVELAND, TENNESSEE 37323

Telephone Number: 423-339-2526  
Email address: SWC@BELLSOUTH.NET  
Fax number: -----

**SWPPP Contact:**

Name: STEVE WILLIAMS  
Telephone number: 423-618-5579  
Email address: SWC@BELLSOUTH.NET  
Fax number: -----

**1.3 Stormwater Pollution Prevention Team**

**Instructions (see 2008 MSGP Part 5.1.1):**

- Identify the staff members (by name or title) that comprise the facility's stormwater pollution prevention team as well as their individual responsibilities.
- Your stormwater pollution prevention team is responsible for assisting the facility manager in developing and revising the facility's SWPPP, implementing and maintaining control measures/BMPs, and taking corrective actions where required. Each member of the stormwater pollution prevention team must have ready access to either an electronic or paper copy of applicable portions of the MSGP and your SWPPP.

<b>Staff Names</b>	<b>Individual Responsibilities</b>
STEVE WILLIAMS	CONTRACTOR OVERSEES OPERATIONS, SEDIMENT CONTROLS, ETC.
[Repeat as necessary]	[Repeat as necessary]
[Repeat as necessary]	[Repeat as necessary]
[Repeat as necessary]	[Repeat as necessary]
[Repeat as necessary]	[Repeat as necessary]
[Repeat as necessary]	[Repeat as necessary]

**1.4 Activities at the Facility**

**Instructions (see 2008 MSGP Part 5.1.2):**

- Provide a general description of the nature of the industrial activities at your facility.

THIS SITE IS BEING USED AS A BORROW PIT FOR DIRT THAT WILL BE USED ON OTHER PROJECTS.

## **1.5 General Location Map**

**Instructions (see 2008 MSGP Part 5.1.2):**

- Provide a general location map (e.g., U.S. Geological Survey (USGS) quadrangle map) with enough detail to identify the location of your facility and all receiving waters for your stormwater discharges (include as Attachment A of this SWPPP Template).

Include a copy of the general location map for this facility in Attachment A.

## 1.6 Site Map

### Instructions (see 2008 MSGP Part 5.1.2):

- Include a map showing the following information. The site map should be included as Attachment B of this SWPPP Template.
  - the size of the property in acres;
  - the location and extent of significant structures and impervious surfaces;
  - directions of stormwater flow (use arrows);
  - locations of all existing structural control measures;
  - locations of all receiving waters in the immediate vicinity of your facility, indicating if any of the waters are impaired and, if so, whether the waters have TMDLs established for them;
  - locations of all stormwater conveyances including ditches, pipes, and swales;
  - locations of potential pollutant sources identified under MSGP, Part 5.1.3.2;
  - locations where significant spills or leaks identified under MSGP, Part 5.1.3.3 have occurred;
  - locations of all stormwater monitoring points;
  - locations of stormwater inlets and outfalls, with a unique identification code for each outfall (e.g., Outfall No. 1, No. 2, etc), indicating if you are treating one or more outfalls as “substantially identical” under MSGP, Parts 4.2.3, 5.1.5.2, and 6.1.1, and an approximate outline of the areas draining to each outfall;
  - municipal separate storm sewer systems, where your stormwater discharges to them;
  - locations and descriptions of all non-stormwater discharges identified under MSGP, Part 2.1.2.10;
  - locations of the following activities where such activities are exposed to precipitation:
    - fueling stations;
    - vehicle and equipment maintenance and/or cleaning areas;
    - loading/unloading areas;
    - locations used for the treatment, storage, or disposal of wastes;
    - liquid storage tanks;
    - processing and storage areas;
    - immediate access roads and rail lines used or traveled by carriers of raw materials, manufactured products, waste material, or by-products used or created by the facility;
    - transfer areas for substances in bulk;
    - machinery; and
  - locations and sources of run-on to your site from adjacent property that contains significant quantities of pollutants.

Include a copy of the site map for this facility in Attachment B.

## SECTION 2: POTENTIAL POLLUTANT SOURCES

**Instructions (see 2008 MSGP Part 5.1.3):**

- In this section, you are required to describe areas at your facility where industrial materials or activities are exposed to stormwater or from which allowable non-stormwater discharges are released.

### 2.1 Industrial Activity and Associated Pollutants

**Instructions (see 2008 MSGP Parts 5.1.3.1 and 5.1.3.2):**

- Include a list of industrial activities exposed to stormwater (e.g., material storage; equipment/vehicle fueling, maintenance, and cleaning; cutting steel beams) and the pollutants or pollutant constituents (e.g., motor oil, fuel, battery acid, and cleaning solvents) associated with these activities.
- In your list of pollutants associated with your industrial activities, include all significant materials that have been handled, treated, stored, or disposed, and that have been exposed to stormwater in the 3 years prior to the date you prepare your SWPPP.

Industrial Activity	Associated Pollutants
NOT SURE THAT THIS IS APPLICABLE. REMOVAL OF DIRT IS ACTIVITY.	Insert names of pollutants or pollutant constituents that could be associated with this activity and released in stormwater
[Repeat as necessary]	[Repeat as necessary]
[Repeat as necessary]	[Repeat as necessary]
[Repeat as necessary]	[Repeat as necessary]
[Repeat as necessary]	[Repeat as necessary]
[Repeat as necessary]	[Repeat as necessary]
[Repeat as necessary]	[Repeat as necessary]



## 2.2 Spills and Leaks

### Instructions (See 2008 MSGP Part 5.1.3.3):

- Include the following in this section:
  - o **Potential spills and leaks:** A description of where potential spills and leaks could occur at your site that could contribute pollutants to your stormwater discharge, and specify which outfall(s) are likely to be affected by such spills and leaks.
  - o **Past spills and leaks:** A description of significant spills and leaks in the past 3 years of oil or toxic or hazardous pollutants that actually occurred at exposed areas, or that drained to a stormwater conveyance.
- *Note: Significant spills and leaks include, but are not limited to, releases of oil or hazardous substances in excess of quantities that are reportable under CWA Section 311 (see 40 CFR 110.6 and 40 CFR 117.21) or Section 102 of the Comprehensive Environmental Response, Compensation and Liability Act (CERCLA), 42 USC §9602.*

### Areas of Site Where Potential Spills/Leaks Could Occur

Location	Outfalls
DO NOT BELIEVE THIS IS APPLICABLE	Specify which outfall(s) would be affected
[Repeat as necessary]	[Repeat as necessary]
[Repeat as necessary]	[Repeat as necessary]
[Repeat as necessary]	[Repeat as necessary]

### Description of Past Spills/Leaks

Date	Description	Outfalls
Insert date of spill/leak	Insert description of spill/leak (where it occurred, what happened, types of pollutants, extent of damage)	Specify which outfall(s) were affected
[Repeat as necessary]	[Repeat as necessary]	[Repeat as necessary]
[Repeat as necessary]	[Repeat as necessary]	[Repeat as necessary]
[Repeat as necessary]	[Repeat as necessary]	[Repeat as necessary]

## 2.3 Non-Stormwater Discharges Documentation

### Instructions (see 2008 MSGP Part 5.1.3.4):

- The questions below require you to provide documentation of the following:
  - o Your evaluation for the presence of non-stormwater discharges at your site; and
  - o Your elimination of any unauthorized non-stormwater discharges.

- Date of evaluation: **DO NOT BELIEVE THIS SECTION IS APPLICABLE**
- Description of the evaluation criteria used: **Describe the method you used to conduct your evaluation and to determine for each non-stormwater sources whether it is prohibited or allowed under the permit.**
- List of the outfalls or onsite drainage points that were directly observed during the evaluation: **Insert outfalls/drainage points observed.**
- Different types of non-stormwater discharge(s) and source locations: **Describe types of non-stormwater discharges observed and the corresponding outfall or drainage point.**
- Action(s) taken, such as a list of control measures used to eliminate unauthorized discharge(s), if any were identified. For example, a floor drain was sealed, a sink drain was re-routed to sanitary, or an NPDES permit application was submitted for an unauthorized cooling water discharge: **Describe actions taken to eliminate unauthorized non-stormwater discharges and the corresponding outfall/drainage point affected.**

## 2.4 Salt Storage

### Instructions (see 2008 MSGP Part 5.1.3.5):

- Document the location of any storage piles containing salt used for deicing or other commercial or industrial purposes.
- Note: You will be asked additional questions concerning salt storage in Section 3.7 of this SWPPP template, below.

THIS IS NOT APPLICABLE

## 2.5 Sampling Data Summary

### Instructions (See 2008 MSGP Part 5.1.3.6):

- Summarize all stormwater sampling data collected from your permitted outfalls during the previous permit term.

THIS IS NOT APPLICABLE

## SECTION 3: STORMWATER CONTROL MEASURES

### Instructions (See 2008 MSGP Parts 5.1.4.1 and 2.1.2):

- In Sections 3.1 - 3.12 of this SWPPP template, you are asked to describe the stormwater control measures that you have installed at your site to meet each of the permit's "non-numeric effluent limits" in Part 2.1.2 of the 2008 MSGP.

2.1.2 Non-Numeric Technology-Based Effluent Limits (BPT/BAT/BCT).

2.1.2.1 Minimize Exposure. You must minimize the exposure of manufacturing, processing, and material storage areas (including loading and unloading, storage, disposal, cleaning, maintenance, and fueling operations) to rain, snow, snowmelt, and runoff by either locating these industrial materials and activities inside or protecting them with storm resistant coverings (although significant enlargement of impervious surface area is not recommended). In minimizing exposure, you should pay particular attention to the following:

- use grading, berming, or curbing to prevent runoff of contaminated flows and divert run-on away from these areas;
- locate materials, equipment, and activities so that leaks are contained in existing containment and diversion systems (confine the storage of leaky or leak-prone vehicles and equipment awaiting maintenance to protected areas);
- clean up spills and leaks promptly using dry methods (e.g., absorbents) to prevent the discharge of pollutants;
- use drip pans and absorbents under or around leaky vehicles and equipment or store indoors where feasible;
- use spill/overflow protection equipment;
- drain fluids from equipment and vehicles prior to on-site storage or disposal;
- perform all cleaning operations indoors, under cover, or in bermed areas that prevent runoff and run-on and also that capture any overspray; and
- ensure that all washwater drains to a proper collection system (i.e., not the stormwater drainage system).

The discharge of vehicle and equipment washwater, including tank cleaning operations, is not authorized by this permit. These wastewaters must be covered under a separate NPDES permit, discharged to a sanitary sewer in accordance with applicable industrial pretreatment requirements, or disposed of otherwise in accordance with applicable law.

Note: Industrial materials do not need to be enclosed or covered if stormwater runoff from affected areas will not be discharged to receiving waters or if discharges are authorized under another NPDES permit.

### **3.1 Minimize Exposure**

**Instructions (see 2008 MSGP Part 2.1.2.1):**

- Describe any structural controls or practices used to minimize the exposure of industrial activities to rain, snow, snowmelt, and runoff. Describe where the controls or practices are being implemented at your site.

THIS IS NOT APPLICABLE

### 3.2 *Good Housekeeping*

**Instructions (see 2008 MSGP Parts 2.1.2.2 and 5.1.5.1):**

Describe any practices you are implementing to keep exposed areas of your site clean. Describe where each practice is being implemented at your site. Include here your schedule for: (1) regular pickup and disposal of waste materials, and (2) routine inspections for leaks and of the condition of drums, tanks, and containers.

THIS IS NOT APPLICABLE

### 3.3 *Maintenance*

**Instructions (see 2008 MSGP Parts 2.1.2.3 and 5.1.5.1):**

- Describe procedures (1) to maintain industrial equipment so that spills/leaks are avoided, and (2) to maintain any of your site’s control measures in effective operating condition. Include the schedule you will follow for such maintenance activities. Describe where each applicable procedure is being implemented at the site.

THIS IS NOT APPLICABLE

### 3.4 *Spill Prevention and Response*

**Instructions (see 2008 MSGP Parts 2.1.2.4 and 5.1.5.1):**

- Describe any structural controls or procedures used to minimize the potential for leaks, spills, and other releases. You must implement the following at a minimum:
  - Procedures for plainly labeling containers (e.g., “Used Oil,” “Spent Solvents,” “Fertilizers and Pesticides,” etc.) that could be susceptible to spillage or leakage to encourage proper handling and facilitate rapid response if spills or leaks occur;
  - Preventative measures such as barriers between material storage and traffic areas, secondary containment provisions, and procedures for material storage and handling;
  - Procedures for expeditiously stopping, containing, and cleaning up leaks, spills, and other releases; and
  - Procedures for notification of appropriate facility personnel, emergency response agencies, and regulatory agencies.

Describe where each control is to be located or where applicable procedures will be implemented.

- Note: Some facilities may be required to develop a Spill Prevention Control and Countermeasure (SPCC) plan under a separate regulatory program (40 CFR 112). If you are required to develop an SPCC plan, or you already have one, you should include references to the relevant requirements from your plan.

THIS IS NOT APPLICABLE

### 3.5 *Erosion and Sediment Controls*

**Instructions (see 2008 MSGP Part 2.1.2.5):**

Describe structural or non-structural controls used at your site to stabilize exposed areas and contain runoff to minimize onsite erosion and potential offsite discharges of sediment. Note: You must at a minimum implement flow velocity dissipation devices at outfalls and discharge channels. Describe the location at your site where each control will be implemented.

SILT FENCE, TEMPORARY SEDIMENT PONDS, AND OTHER BMPS ARE USED TO CONTROL EROSION AND SEDIMENT RUNOFF

### 3.6 *Management of Runoff*

**Instructions (See 2008 MSGP Part 2.1.2.6):**

Describe controls used at your site to divert, infiltrate, reuse, contain, or otherwise reduce stormwater runoff. Describe the location at your site where each control will be implemented.

STORMWATER IS CONFINED IN ITS RUNOFF PATH TO VARIOUS TEMPORARY SEDIMENT PONDS/TRAPS

### 3.7 *Salt Storage Piles or Piles Containing Salt*

**Instructions (see 2008 MSGP Part 2.1.2.7):**

If applicable, describe structures at your site that either cover or enclose salt storage piles or piles containing salt, or that prevent the discharge of stormwater from such piles. Also, describe any controls or procedures used to minimize exposure resulting from adding to or removing materials from the pile. Describe the location at your site where each control and/or procedure will be implemented.

NOT APPLICABLE

### 3.8 *MSGP Sector-Specific Non-Numeric Effluent Limits*

**Instructions (see 2008 MSGP Part 2.1.2.8):**

- Describe any controls or procedures that will be used at your site to comply with any sector-specific requirements that apply to you in Part 8 of the 2008 MSGP. Describe the location at your site where each control and/or procedure will be implemented.
- Note: Sector-specific effluent limits apply to Sectors A, E, F, G, H, I, L, M, N, O, P, Q, R, S, T, U, V, X, Y, Z, and AA.

NOT APPLICABLE

### **3.9 Employee Training**

**Instructions (see 2008 MSGP Parts 2.1.2.9 and 5.1.5.1):**

Describe your plan for training the employees who work in areas where industrial materials or activities are exposed to stormwater, or who are responsible for implementing activities necessary to meet the conditions of the 2008 MSGP, including all members of your Pollution Prevention Team. Included in your description must be the frequency of training (note: recommended at least one time per year), and the schedule you will follow.

NOT APPLICABLE

### **3.10 Non-Stormwater Discharges**

**Instructions (see 2008 MSGP 2.1.2.10):**

Describe how you eliminated any unauthorized non-stormwater discharges at your site. The unauthorized non-stormwater discharges include any non-stormwater discharges that are not specifically identified in Part 1.1.3 of the 2008 MSGP. Note: If this section is already addressed by your documentation for Section 2.3 of the SWPPP template, you can simply include a cross-reference to that section of your SWPPP.

NOT APPLICABLE

### **3.11 Waste, Garbage and Floatable Debris**

**Instructions (see 2008 MSGP Part 2.1.2.11):**

Describe controls and procedures that will be used at your site to minimize discharges of waste, garbage, and floatable debris. Describe the location at your site where each control and/or procedure will be implemented.

THERE SHOULD BE LITTLE TO NO GARBAGE OR DEBRIS AND IT SHOULD BE CONTAINED BY THE SEDIMENT TRAPS.

### **3.12 Dust Generation and Vehicle Tracking of Industrial Materials**

**Instructions (see 2008 MSGP Part 2.1.2.12):**

Describe controls and procedures you will use at your site to minimize the generation of dust and off-site tracking of raw, final, or waste materials. Describe the location at your site where each control and/or procedures will be implemented.

CONSTRUCTION ENTRANCE IS IN PLACE TO CONTROL TRACKING OF SOIL ONTO STREETS.A

## SECTION 4: SCHEDULES AND PROCEDURES FOR MONITORING

### Instructions (see 2008 MSGP Part 5.1.5.2):

- Describe your procedures for conducting the five types of analytical monitoring specified by the MSGP, where applicable to your facility, including:
  - Benchmark monitoring (2008 MSGP, Part 6.2.1 and relevant requirements in Part 8 and/or Part 9);
  - Effluent limitations guidelines monitoring (2008 MSGP, Part 6.2.2 and relevant requirements in Part 8);
  - State- or Tribal-specific monitoring (2008 MSGP, Part 6.2.3 and relevant requirements in Part 9);
  - Impaired waters monitoring (2008 MSGP, Part 6.2.4); and
  - Other monitoring as required by EPA (2008 MSGP, Part 6.2.5).
- Depending on the type of facility you operate, and the monitoring requirements to which you are subject, you must collect and analyze stormwater samples and document monitoring activities consistent with the procedures described in 2008 MSGP, Part 6 and Appendix B, Subsections 10 – 12, and any additional sector-specific or State/Tribal-specific requirements in 2008 MSGP, Parts 8 and 9, respectively. Refer to 2008 MSGP, Part 7 for reporting and recordkeeping requirements. Note: All monitoring must be conducted in accordance with the relevant sampling and analysis requirements at 40 CFR Part 136. Include in your description procedures for ensuring compliance with these requirements.
- If you are invoking the exception for inactive and unstaffed sites for benchmark monitoring, you must include in your SWPPP the information to support this claim as required by 2008 MSGP, Part 6.2.1.3.
- If you plan to use the substantially identical outfall exception for your benchmark monitoring requirements in 2008 MSGP, Part 6.2.1 and/or your quarterly visual assessment requirements in 2008 MSGP, Part 4.2.3, you must include the following documentation:
  - Location of each of the substantially identical outfalls;
  - Description of the general industrial activities conducted in the drainage area of each outfall;
  - Description of the control measures implemented in the drainage area of each outfall;
  - Description of the exposed materials located in the drainage area of each outfall that are likely to be significant contributors of pollutants to stormwater discharges;
  - An estimate of the runoff coefficient of the drainage areas (low = under 40%; medium = 40 to 65%; high = above 65%); and
  - Why the outfalls are expected to discharge substantially identical effluents.

For each type of monitoring, your SWPPP must include a description of:

1. **Sample Location(s).** Describe where samples will be collected, including any determination that two or more outfalls are substantially identical. **ANY REQUIRED SAMPLING WOULD BE PERFORMED AT THE STORM DRAIN STRUCTURE JUST BEFORE LEAVING THE SITE.**

2. **Pollutant Parameters to be Sampled.** Include a list of the pollutant parameters that will be sampled and the frequency of sampling for each parameter. **DO NOT BELIEVE THIS IS APPLICABLE**
3. **Monitoring Schedules.** Include the schedule you will follow for monitoring your stormwater discharge, including where applicable any alternate monitoring periods to be used for facilities in climates with irregular stormwater runoff (2008 MSGP, Part 6.1.6). **DURING SOIL REMOVING OPERATIONS**
  4. **Numeric Limitations.** List here any pollutant parameters subject to numeric limits (effluent limitations guidelines), and which outfalls are subject to such limits. Note that numeric limits are only included for Sectors A, C, D, E, J, K, L, and O. **DO NOT BELIEVE THIS IS APPLICABLE**
  5. **Procedures.** Describe procedures you will follow for collecting samples, including responsible staff who will be involved, logistics for taking and handling samples, laboratory to be used, etc. **DO NOT BELIEVE THIS IS APPLICABLE**

Note: It may be helpful to create a table with columns corresponding to # 1 - 5 above for each type of monitoring you are required to conduct.

**Inactive and Unstaffed sites exception** (if applicable)

If you are invoking the exception for inactive and unstaffed sites for benchmark monitoring, include information to support this claim.

**DO NOT BELIEVE THIS IS APPLICABLE**

**Substantially identical outfall exception** (if applicable)

If you plan to use the substantially identical outfall exception for your benchmark monitoring and/or quarterly visual assessment requirements, include the following information here to substantiate your claim that these outfalls are substantially identical:

- Location of each of the substantially identical outfalls: **DO NOT BELIEVE THIS IS APPLICABLE**
- Description of the general industrial activities conducted in the drainage area of each outfall: **DO NOT BELIEVE THIS IS APPLICABLE**
- Description of the control measures implemented in the drainage area of each outfall: **DO NOT BELIEVE THIS IS APPLICABLE**
- Description of the exposed materials located in the drainage area of each outfall that are likely to be significant contributors of pollutants to stormwater discharges: **DO NOT BELIEVE THIS IS APPLICABLE**
- An estimate of the runoff coefficient of the drainage areas (low=under 40%; medium=40 to 65%; high =above 65%): **DO NOT BELIEVE THIS IS APPLICABLE**
- Why the outfalls are expected to discharge substantially identical effluents: **DO NOT BELIEVE THIS IS APPLICABLE**



## SECTION 5: INSPECTIONS

### Instructions:

- Describe your procedures for performing the three types of inspections required by the 2008 MSGP, including:
  - Routine facility inspections (2008 MSGP, Part 4.1);
  - Quarterly visual assessment of stormwater discharges (2008 MSGP, Part 4.2); and
  - Comprehensive site inspections (2008 MSGP, Part 4.3).
- If you are invoking the exception for inactive and unstaffed sites relating to routine facility inspections and quarterly visual assessments, you must include in your SWPPP the information to support this claim as required by 2008 MSGP, Parts 4.1.3 and 4.2.3.
- A sample routine facility inspection and quarterly visual assessment form is available on EPA's MSGP website ([www.epa.gov/npdes/stormwater/msgp](http://www.epa.gov/npdes/stormwater/msgp)) in the "Additional MSGP Documentation" file. Appendix I of the 2008 MSGP includes a comprehensive site inspection form (Annual Reporting Form).

For the routine facility inspections and the comprehensive site inspections to be performed at your site, include a description of the following:

- The names of the person(s), or the positions of the person(s), responsible for inspection: [STEVE WILLIAMS](#)
- The schedules to be used for conducting inspections. Include here any tentative schedule that will be used for facilities in climates with irregular stormwater runoff discharges (2008 MSGP, Part 4.2.3): [DAILY DURING SOIL REMOVAL OPERATIONS](#) and
- Specific areas of the facility to be inspected, including schedules for specific outfalls: [INSPECT SILT FENCES, SEDIMENT PONDS/TRAPS](#)

For the quarterly visual assessments to be performed at your site, include a description of the following:

- The names of the person(s), or the positions of the person(s), responsible for inspection: [STEVE WILLIAMS](#)
- The schedules to be used for conducting inspections. Include here any tentative schedule that will be used for facilities in climates with irregular stormwater runoff discharges (2008 MSGP, Part 4.2.3): [DAILY DURING SOIL REMOVAL OPERATIONS](#) and
- Specific areas of the facility to be inspected, including schedules for specific outfalls: [OUTLET CONTROL STRUCTURES, CONSTRUCTION ENTRANCE INSPECTED DAILY DURING SOIL REMOVING OPERATIONS AND QUARTERLY OTHERWISE.](#)

### **Inactive and Unstaffed sites exception** (if applicable)

If you are invoking the exception for inactive and unstaffed sites for your routine facility inspections and quarterly visual assessments, include information to support this claim.

[NOT APPLICABLE](#)

## SECTION 6: DOCUMENTATION TO SUPPORT ELIGIBILITY CONSIDERATIONS UNDER OTHER FEDERAL LAWS

### 6.1 *Documentation Regarding Endangered Species.*

**Instructions (see 2008 MSGP Part 5.1.6.1):**

Include any documentation you have that supports your determination of eligibility consistent with 2008 MSGP, Part 1.1.4.5 (Endangered and Threatened Species and Critical Habitat Protection). Refer to Appendix E of the 2008 MSGP for specific instructions for establishing eligibility.

DO NOT BELIEVE THIS IS APPLICABLE

### 6.2 *Documentation Regarding Historic Properties*

**Instructions (see 2008 MSGP Part 5.1.6.2):**

Include any documentation you have that supports your determination of eligibility consistent with 2008 MSGP, Part 1.1.4.6 (Historic Properties Preservation). Refer to Appendix F of the 2008 MSGP for specific instructions for establishing eligibility.

DO NOT BELIEVE THIS IS APPLICABLE

### 6.3 *Documentation Regarding NEPA Review (if applicable)*

**Instructions (see 2008 MSGP Part 5.1.6.3):**

Include any documentation you have that supports your determination of eligibility consistent with MSGP 2008 Part 1.1.2.5 (Discharges Subject to Any New Source Performance Standards).

DO NOT BELIEVE THIS IS APPLICABLE

## SECTION 7: SWPPP CERTIFICATION

**Instructions (see 2008 MSGP Part 5.1.7):**

The following certification statement must be signed and dated by a person who meets the requirements of Appendix B, Subsection 11.A or 11.B, of the 2008 MSGP. Note: This certification must be re-signed in the event of a SWPPP modification in response to a Part 3.1 trigger for corrective action.

I certify under penalty of law that this document and all attachments were prepared under my direction or supervision in accordance with a system designed to assure that qualified personnel properly gathered and evaluated the information submitted. Based on my inquiry of the person or persons who manage the system, or those persons directly responsible for gathering the information, the information submitted is, to the best of my knowledge and belief, true, accurate, and complete. I am aware that there are significant penalties for submitting false information, including the possibility of fine and imprisonment for knowing violations.

Name: STEVE WILLIAMS

Title: PRESIDENT/OWNER –STEVE WILLIAMS  
CONSTRUCTION

Signature: Paul Steven William

Date: 1-24-20

## SECTION 8: SWPPP MODIFICATIONS

### Instructions (see 2008 MSGP Part 5.2):

- Your SWPPP is a “living” document and is required to be modified and updated, as necessary, in response to corrective actions. See Part 3.4 of the 2008 MSGP.
  - If you need to modify the SWPPP in response to a corrective action required by Part 3.1 of the 2008 MSGP, then the certification statement in section 7 of this SWPPP template must be re-signed in accordance with 2008 MSGP Appendix B, Subsection 11.A or 11.B.
  - For any other SWPPP modification, you should keep a log with a description of the modification, the name of the person making it, and the date and signature of that person. See 2008 MSGP Appendix B, Subsection 11.C.

[INSERT LOG HERE](#) or [REFERENCE ATTACHMENT](#)

## SWPPP ATTACHMENTS

Attach the following documentation to the SWPPP:

### ***Attachment A – General Location Map***

Include a copy of your general location map in Attachment A.

### ***Attachment B – Site Map***

Include a copy of your site map(s) in Attachment B.

### ***Attachment C – 2008 MSGP***

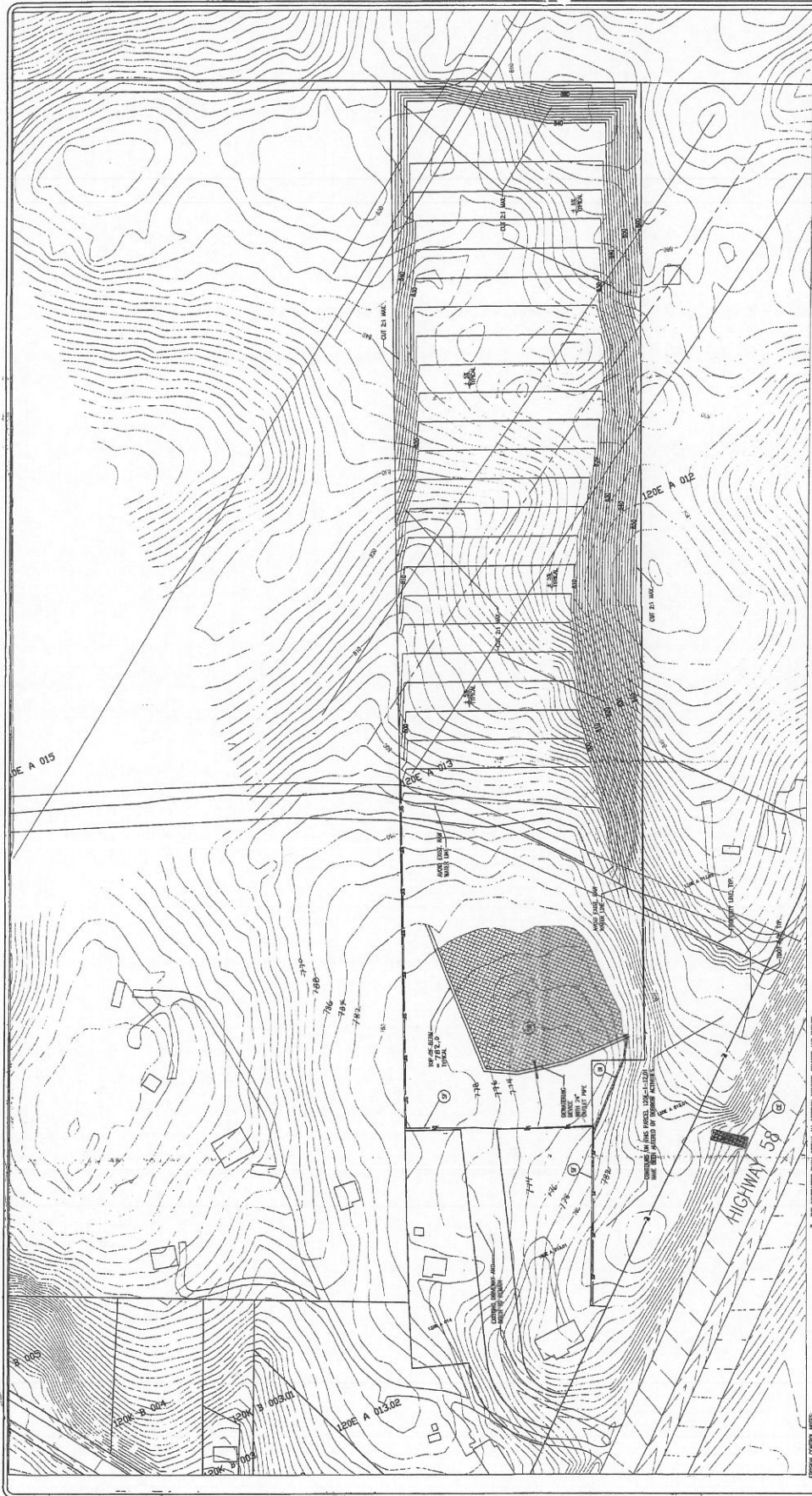
Note: It is helpful to keep a printed-out copy of the 2008 MSGP so that it is accessible to you for easy reference. However, you do not need to formally incorporate the entire 2008 MSGP into your SWPPP. As an alternative, you can include a reference to the permit and where it is kept at the site.

# APPENDIX A



GENERAL LOCATION MAP

# APPENDIX B



**EROSION PREVENTION AND SEDIMENT CONTROL PLAN**  
**GRADING FOR PROPOSED COMMERCIAL PROJECT 593, HIGHWAY 58**  
 Hamilton County  
 Tennessee

For: Stone Hill Construction, LLC By: E. D. Dyer, P.E.  
 1410 Maxwell Drive, NE  
 Atlanta, GA 30329  
 404-525-3333

Drawing No.: C-1-E Date: 6-1-08  
 File Name: 593\_0202\_2008 Revision: 9.1/08

Sheet 1 of 1



**EROSION PREVENTION LEGEND**

SF	SOFT FENCE
CE	CONSTRUCTION EASE
SB	PERMANENT SLOPE MARK
DI	DRAINAGE MARK

14. PERMANENT GRADING: THE CONTRACTOR SHALL MAINTAIN ALL EXISTING CONTOUR MARKERS AND FENCE LINE MARKERS TO THE MAXIMUM EXTENT POSSIBLE. THE CONTRACTOR SHALL MAINTAIN ALL EXISTING CONTOUR MARKERS AND FENCE LINE MARKERS TO THE MAXIMUM EXTENT POSSIBLE. THE CONTRACTOR SHALL MAINTAIN ALL EXISTING CONTOUR MARKERS AND FENCE LINE MARKERS TO THE MAXIMUM EXTENT POSSIBLE.

15. SEDIMENT PREVENTION: THE CONTRACTOR SHALL MAINTAIN ALL EXISTING CONTOUR MARKERS AND FENCE LINE MARKERS TO THE MAXIMUM EXTENT POSSIBLE. THE CONTRACTOR SHALL MAINTAIN ALL EXISTING CONTOUR MARKERS AND FENCE LINE MARKERS TO THE MAXIMUM EXTENT POSSIBLE.

7. THE CONTRACTOR SHALL MAINTAIN ALL EXISTING CONTOUR MARKERS AND FENCE LINE MARKERS TO THE MAXIMUM EXTENT POSSIBLE. THE CONTRACTOR SHALL MAINTAIN ALL EXISTING CONTOUR MARKERS AND FENCE LINE MARKERS TO THE MAXIMUM EXTENT POSSIBLE.

8. PROTECT ALL EXISTING CONTOUR MARKERS AND FENCE LINE MARKERS TO THE MAXIMUM EXTENT POSSIBLE. THE CONTRACTOR SHALL MAINTAIN ALL EXISTING CONTOUR MARKERS AND FENCE LINE MARKERS TO THE MAXIMUM EXTENT POSSIBLE.

1. THIS IS AN EROSION CONTROL PLAN FOR THE PROPOSED COMMERCIAL PROJECT 593, HIGHWAY 58. THE CONTRACTOR SHALL MAINTAIN ALL EXISTING CONTOUR MARKERS AND FENCE LINE MARKERS TO THE MAXIMUM EXTENT POSSIBLE.

2. THE CONTRACTOR SHALL MAINTAIN ALL EXISTING CONTOUR MARKERS AND FENCE LINE MARKERS TO THE MAXIMUM EXTENT POSSIBLE. THE CONTRACTOR SHALL MAINTAIN ALL EXISTING CONTOUR MARKERS AND FENCE LINE MARKERS TO THE MAXIMUM EXTENT POSSIBLE.

## SITE MAP PLAN OF ACTIVITIES

# APPENDIX C

REFERENCE IS MADE TO THE 2008 MSGP.

A COPY OF THIS DOCUMENT IS KEPT ON

FILE AT THE OFFICE OF STEVE WILLIAMS

CONSTRUCTION.