


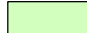
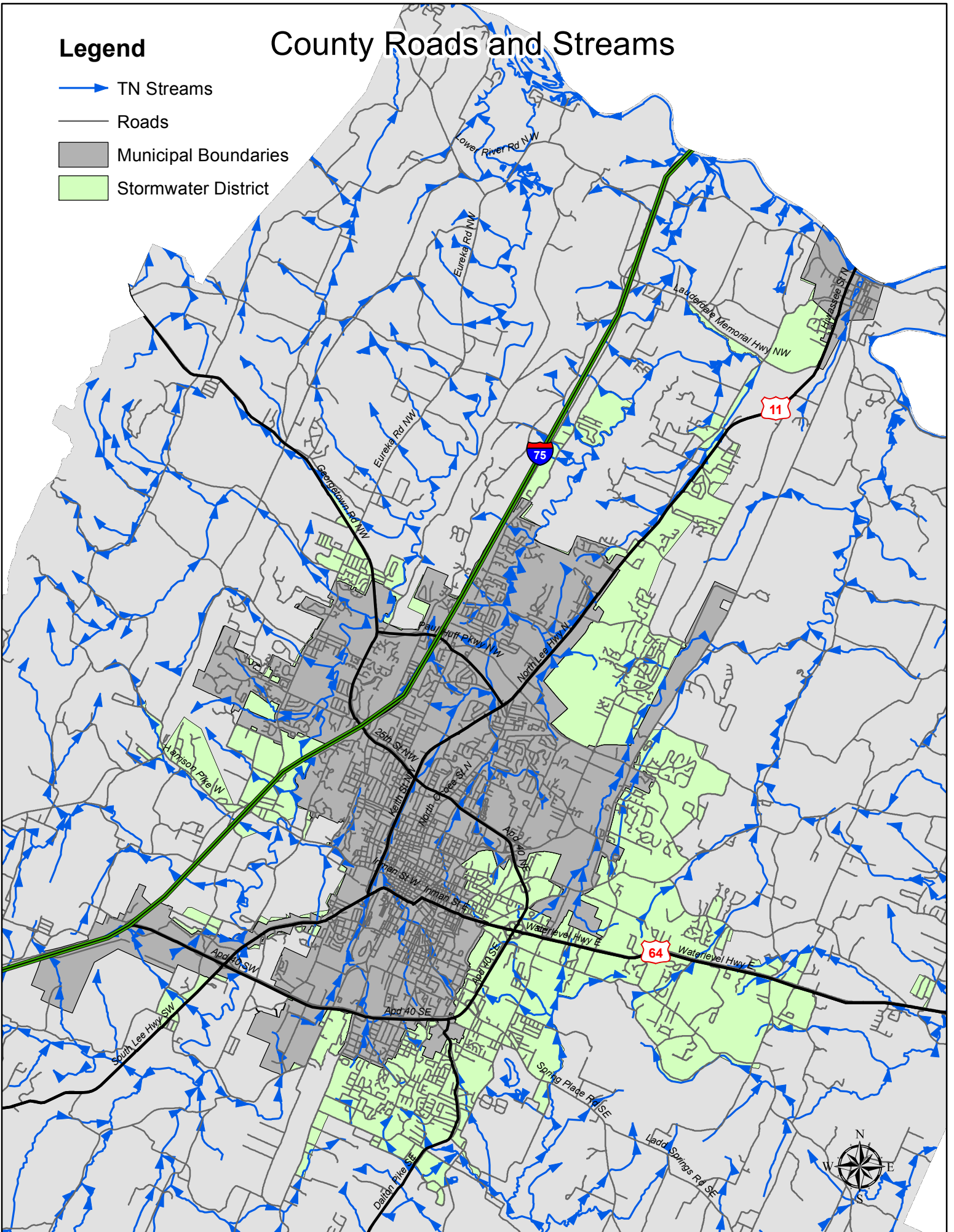


Legend

-  TN Streams
-  Roads
-  Municipal Boundaries
-  Stormwater District

County Roads and Streams



FW: Bradley County CEI Map of Stream flow

Nikki Carpenter <Nikki.Carpenter@tn.gov>

Mon 9/27/2021 2:28 PM

To: Barbara Russell <Barbara.Russell@tn.gov>; Cali Dobbins <Cali.Dobbins@tn.gov>

Please upload to TNS077771. Thanks!



Nikki Carpenter | Environmental Scientist

Division of Water Resources

Chattanooga Environmental Field Office

1301 Riverfront Parkway, Suite 206

Chattanooga, TN 37402

p. 423-661-5267

Nikki.Carpenter@tn.gov

tn.gov/environment

From: Sarah jenson <sjenson@bradleycountyttn.gov>

Sent: Monday, September 13, 2021 9:23 AM

To: Nikki Carpenter <Nikki.Carpenter@tn.gov>

Subject: [EXTERNAL] Bradley County CEI Map of Stream flow

***** This is an EXTERNAL email. Please exercise caution. DO NOT open attachments or click links from unknown senders or unexpected email - STS-Security. *****

Good morning,

The attached map shows Bradley county's Stream flow as requested during our CEI in July.

Best regards,

Sarah Jenson

Stormwater Coordinator

Bradley County Stormwater Division

423-728-7104 Office

423-457-0004 Cell

[Website](#)

[Facebook](#)