

Stormwater Pollution Prevention Plan

for:

A& B Equipment
2315 U.S. Highway 11 South
Sweetwater Tn 37874
423 337-2390

SWPPP Contact(s):

A&B Equipment
Michael Lauth
2315 U.S. Highway 11 South
Sweetwater Tn 37874
423 337- 2390
423 337-2338 michael@ab-eagleline.com

SWPPP Preparation Date:

September 15 2021

Contents

SECTION 1: FACILITY DESCRIPTION AND CONTACT INFORMATION.

1.1 Facility Information.

Facility Information

Name of Facility: A&B Equipment

Street: 2315 U.S. Highway 11 South

City: Sweetwater

State: Tn

ZIP Code:
37874

County or Similar Subdivision: McMinn

NPDES ID (i.e., permit tracking number): TNR054361 (if covered under a previous permit)

Primary Industrial Activity SIC code, and Sector and Subsector (2015 MSGP, Appendix D and Part 8): AB-1 3523

Co-located Industrial Activity(s) SIC code(s), Sector(s) and Subsector(s) (2015 MSGP, Appendix D): This is only location

Latitude/Longitude

Latitude:

35.5474 N (decimal degrees)

Longitude:

-84.5188 ° W (decimal degrees)

Estimated area of industrial activity at site exposed to stormwater: 1.96 (acres)

Discharge Information

Does this facility discharge stormwater into a municipal separate storm sewer system (MS4)? No

If yes, name of MS4 operator: _____

Name(s) of surface water(s) that receive stormwater from your facility: Sweetwater Creek

Does this facility discharge industrial stormwater directly into any segment of an "impaired water" (see definition in 2015 MSGP, Appendix A)? Yes

1.2 Contact Information/Responsible Parties.

Facility Operator(s):

Name: Michael Lauth

Address: 2315 U.S. Highway 11 South

City, State, Zip Code: Sweetwater, Tn, 37874

Telephone Number: 423 337 2390

Email address: michael@ab-eagleline.com

Fax number: 423 337 2338

(repeat for multiple operators by copying and pasting the above rows)

Facility Owner(s):

Name: Elizabeth Lauth

Address: 2315 U.S. Highway 11 South

City, State, Zip Code Sweetwater, Tn 37874

Telephone Number: 423 337 2390

Email address: N/A

Fax number: 423 337 2338

(repeat for multiple operators by copying and pasting the above rows)

SWPPP Contact(s):

SWPPP Contact Name (Primary): Michael Lauth

Telephone number: 423 3372390

Email address: michael@ab-eagleline.com

Fax number: 423 337 2338

SWPPP Contact Name (Backup): Donna Lauth

Telephone number: 423 337 2390

Email address: donna@ab-eagleline.com

Fax number: 423 337 2338

1.3 Stormwater Pollution Prevention Team.

Staff Names	Individual Responsibilities
Michael Lauth VP	Monitoring Maps Maintenance and implementing good housekeeping measures
Donna Lauth	Collecting samples ,quarterly reports ,Records

1.4 Site Description.

Farm machinery manufacturing and trailer sales

1.5 General Location Map.

2315 U.S. Highway 11 South Sweetwater Tn 37874

GPS 35 degrees 32 minutes 821 Latitude

84 Degrees 31 minutes 113 longitude

1.6 Site Map.

Included

SECTION 2: POTENTIAL POLLUTANT SOURCES.

Section 2 will describe all areas at your facility where industrial materials or activities are exposed to stormwater or from which allowable non-stormwater discharges originate. Industrial materials or activities include, but are not limited to: material handling equipment or activities; industrial machinery; raw materials; industrial production and processes; and intermediate products, byproducts, final products, and waste products. Material handling activities include, but are not limited to: the storage, loading and unloading, transportation, disposal or conveyance of any raw material, intermediate product, final product or waste product. For structures located in areas of industrial activity, you must be aware that the structures themselves are potential sources of pollutants. This could occur, for example, when metals such as aluminum or copper are leached from the structures as a result of acid rain.

For each area identified, the SWPPP must include industrial activities, potential pollutants, spills and leaks, unauthorized non-stormwater discharges, salt storage, stormwater sampling data and descriptions of control measures.

2.1 Potential Pollutants Associated with Industrial Activity.

Industrial Activity	Associated Pollutants
Manufacturing farm equipment	Oil Grease Suspended solids
Outdoor	metals

2.2 Spills and Leaks.

Areas of Site Where Potential Spills/Leaks Could Occur

Location	Discharge Points
Inside the building	none
in side the shed	none

Description of Past Spills/Leaks

Date	Description	Discharge Points
Insert date of spill/leak	Insert description of spill/leak (where it occurred, what happened, types of pollutants, extent of damage)	Specify which discharge point(s) were affected

2.3 *Unauthorized Non-stormwater Discharges Documentation.*

None

Description of this facility's unauthorized non-stormwater discharge evaluation:

- Date of evaluation: 9-30-21
- Michael Lauth I walked the plant and the property to look for non stormwater discharges I walked over and observed SW-1 and there was no discharge and no sign there has been any since last rain .
- List of the drainage points that were directly observed during the evaluation: Outfall SW1
- We have no drains inside the plant that go outside The bathroom has 1 floor drain and it is connected to the sewer the other drains are sinks and toilets are all connected to the sewer The Bathroom in office has 1 floor drain and the sinks and toilets are connected to the sewer and they are connected to sewer I saw no nonstormwater discharge

2.4 *Salt Storage.*

None

Sampling Data Summary.

Lab reports

Attached from last 4 years of data collected

INSERT SUMMARY OF STORMWATER SAMPLING DATA COLLECTED FOR THE PAST PERMIT, AND/OR ATTACH DISCHARGE MONITORING REPORTS

OR LABORATORY RESULTS.

Stormwater monitoring was performed in 2021, 2020, 2019, 2017. The results from the monitoring show that concentrations of oil and grease and total suspended solids are below the TMSP's benchmark cutoff concentrations.

SECTION 3: STORMWATER CONTROL MEASURES.

3.1 *Non-numeric Technology-based Effluent Limits (BPT/BAT/BCT)*

You must comply with the following non-numeric effluent limits (except where otherwise specified in Part 8) as well as any sector-specific non-numeric effluent limits in Part 8.

3.1.1 Minimize Exposure.

we do maintenance under roof cover

3.1.2 Good Housekeeping.

We keep garbage in dumpster and keep lot cleared of litter

Oil and grease is all stored inside

We used gravel for road ways and keep grass cut and maintained

3.1.3 Maintenance.

keep gravel graded, and grass mowed and the lot cleared of litter. The waste dumpster is emptied every week and the scrap metal bin is emptied 2 month or when full

3.1.4 Spill Prevention and Response.

if there is a spill we use oil dri to clean up immediatley and dispose of appropriatley

3.1.5 Erosion and Sediment Controls.

gravel in parking lot, septic tank rocks in ditches, grass

3.1.6 Management of Runoff.

The run off from site goes to the northeast corner and has to run grass before it gets to creek on all sides

3.1.7 Salt Storage Piles or Piles Containing Salt.

none

3.1.8 Dust Generation and Vehicle Tracking of Industrial Materials.

Keep gravel maintained

3.2 Sector-Specific Non-Numeric Effluent Limits.

Not applicable

3.3 Numeric Effluent Limitations Based on Effluent Limitations Guidelines.

Not applicable we do none of the activites listed

Regulated Activity	40 CFR Part/Subpart	Effluent Limit
Discharges resulting from spray down or intentional wetting of logs at wet deck storage areas	Part 429, Subpart I	See Part 8.A.7
Runoff from phosphate fertilizer manufacturing facilities that comes into contact with any raw materials, finished product, by-products or waste products (SIC 2874)	Part 418, Subpart A	See Part 8.C.4
Runoff from asphalt emulsion facilities	Part 443, Subpart A	See Part 8.D.4
Runoff from material storage piles at cement manufacturing facilities	Part 411, Subpart C	See Part 8.E.5
Mine dewatering discharges at crushed stone, construction sand and gravel, or industrial sand mining facilities	Part 436, Subparts B, C, or D	See Part 8.J.9
Runoff from hazardous waste landfills	Part 445, Subpart A	See Part 8.K.6
Runoff from non-hazardous waste landfills	Part 445, Subpart B	See Part 8.L.10
Runoff from coal storage piles at steam electric generating facilities	Part 423	See Part 8.O.8

Runoff containing urea from airfield pavement deicing at existing and new primary airports with 1,000 or more annual non-propeller aircraft departures	Part 449	See Part 8.S.8
--	----------	----------------

3.4 Water Quality-based Effluent Limitations and Water Quality Standards. not applicable

SECTION 4: SCHEDULES AND PROCEDURES.

4.1 Good Housekeeping.

daily pick up trash and wood Keep area around dumpsters clean

4.2 Maintenance.

Keep drive way graded as needed and lawn area planted with grass and mowed

4.3 Spill Prevention and Response Procedures.

Keep oil and grease inside building and shed

if there is a spill clean up with oil dry and dispose of waste appropriately

4.4 Erosion and Sediment Control.

Landscaping and grass planted around the plant

No chemicals or polymers used

4.5 Employee Training.

Keep all employees aware that manufacturing should be performed indoors and away from exposure to stormwater and of the litter to keep cleaned up so it does not get in stormwater

DESCRIBE EMPLOYEE TRAINING PLAN AND SCHEDULES.

On the job

4.6 Inspections and Assessments.

Go out and observe water after storm and where it goes and where it comes from and try to minimize any pollutants in runoff

4.6.1 Routine Facility Inspections. We will inspect monthly and look for debris or issues that will get in stormwater runoff fix the issue Also check the trash dumpster and scrap dumpster to keep area around them clean are not leaking anything

For routine facility inspections to be performed at your site, your SWPPP must include a description of the following:

- **Responsible for inspection.** Michael Lauth VP, Donna Lauth
- **Schedules for conducting inspections.** inspection schedule
- **Quarterly when there is a rain event**
- **Check area and just keep up good housekeeping all the time**
- **The Schedule will be divided into quarters and will have to be done when a precipitation event happens each quarter Rain,snow or melting snow and keep area clean of debris that would end up in runoff**
- **List areas where industrial materials or activities are exposed to stormwater.** steel bars outside
- **List areas identified in the SWPPP Steel,Gravel,Wood**

- **Areas where spills and leaks have occurred in the past 3 years.**
Inside the building and shed
- **Inspection information for discharge points. SW-1 northeast corner of the lot GPS coordinates for SW-1 35 degrees 54 minutes 744 latitude - 84 degrees 51 minutes 783 longitude**
-
- **List the control measures used to comply with the effluent limits contained in this permit. We dispose of oil and grease, at recycling center in Athens Tn We have landscaping and berms to keep runoff contained.** Manufacturing occurs indoors, away from exposure to stormwater.
- **Other site-specific inspection objectives.** We will identify the stormwater runoff areas and make sure we keep clean and debris free and see if we can decrease the pollutants in runoff

4.6.2 Quarterly Visual Assessment of Stormwater Discharges.

For quarterly visual assessments to be performed at your site, your SWPPP must include a description of the following:

- **Person(s) or positions of person(s) responsible for assessments.**
Michael Lauth VP ,Donna Lauth
- **Schedules for conducting assessments.** The inspections will be done quarterly March,June,September,December and when there is a snowmelting or heavy rain event
- **Specific assessment activities.** We will inspect at water runoff areas and look for debris and pollutants inspect check for good house keeping and look for debris we collect sample in 2 buckets at SW-1 Check Garbage and scrap dumpster make sure nothing is leaking

4.6.3 Comprehensive Site Compliance Evaluation - Annual

Once a year, site personnel will conduct a visual inspection of the entire facility, as well as review previous inspection reports of the outfalls and potential pollutant sources and stormwater monitoring results. Facility personnel will look for trends of non-compliance and determine if any additional Best Management Practices should be installed to reduce the concentrations of pollutants in the facility's discharge. Facility personnel will also review the SWPPP to assess the accuracy and completeness of the document.

Comprehensive compliance evaluations will be documented on a form. Information on the form will include the date of inspection, issues observed, and corrective measures taken to address any issues observed. Inspection records will be maintained for a minimum of 5 years.

- **Person(s) or positions of person(s) responsible for inspection.** Michael Lauth
- **Schedules for conducting inspections.** Annually
- **Specific assessment activities.**
 - The entire facility, including potential pollutant sources listed in 4.6.1 above and stormwater outfalls listed in 4.6.2 above
 - Previously conducted annual monitoring results, inspection reports for the stormwater outfalls and potential pollutant sources
 - SWPPP
- **Inspection information for discharge points.**
 - Outfall SW1 – located in the northeast corner of the site

4.6.3 Exception to Routine Facility Inspections and Quarterly Visual Assessments for Inactive and Unstaffed Sites. Not applicable

We are staffed 5 or 6 days a week

4.7 Monitoring.

Check the following monitoring activities applicable to your facility:

Quarterly benchmark monitoring X
Effluent limitations guidelines monitoring
State- or tribal-specific monitoring
Impaired waters monitoring
Other monitoring required by EPA

For each type of monitoring checked above, your SWPPP must include the following information:

- **Sample location(s).** northeast corner of property Outfall SW1, located at GPS 35.5474465 -84.5178320 (GPS coordinates from phone google maps)
- **Pollutants to be sampled** Oil,Grease, total suspended solids .
- **Monitoring Schedules.** Yearly
- **Numeric Limitations.** oil ,grease 15 (mg/l) Total Suspended solids 150(mg/l)
- **Procedures** We place 2 buckets in holes so water can run in during a storm Donna Lauth takes the water samples And the samples are placed in a jar then shipped to AIRL Cleveland Tn 37312

Inactive and unstaffed sites exception

We are staffed 5 or 6 days a week

SECTION 6: CORRECTIVE ACTIONS.

SECTION 7: SWPPP CERTIFICATION.

I certify under penalty of law that this document and all attachments were prepared under my direction or supervision in accordance with a system designed to assure that qualified personnel properly gathered and evaluated the information submitted. Based on my inquiry of the person or persons who manage the system, or those persons directly responsible for gathering the information, the information submitted is, to the best of my knowledge and belief, true, accurate and complete. I am aware that there are significant penalties for submitting false information, including the possibility of fine and imprisonment for knowing violations.

Name: Michael Lauth

Title: V.P.

Signature: 

Date: 9-30-21

SECTION 8: SWPPP MODIFICATIONS.

SWPPP ATTACHMENTS

Attach the following documentation to the SWPPP:

Attachment A – General Location Map

Include a copy of your general location map in Attachment A.

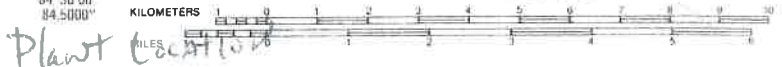
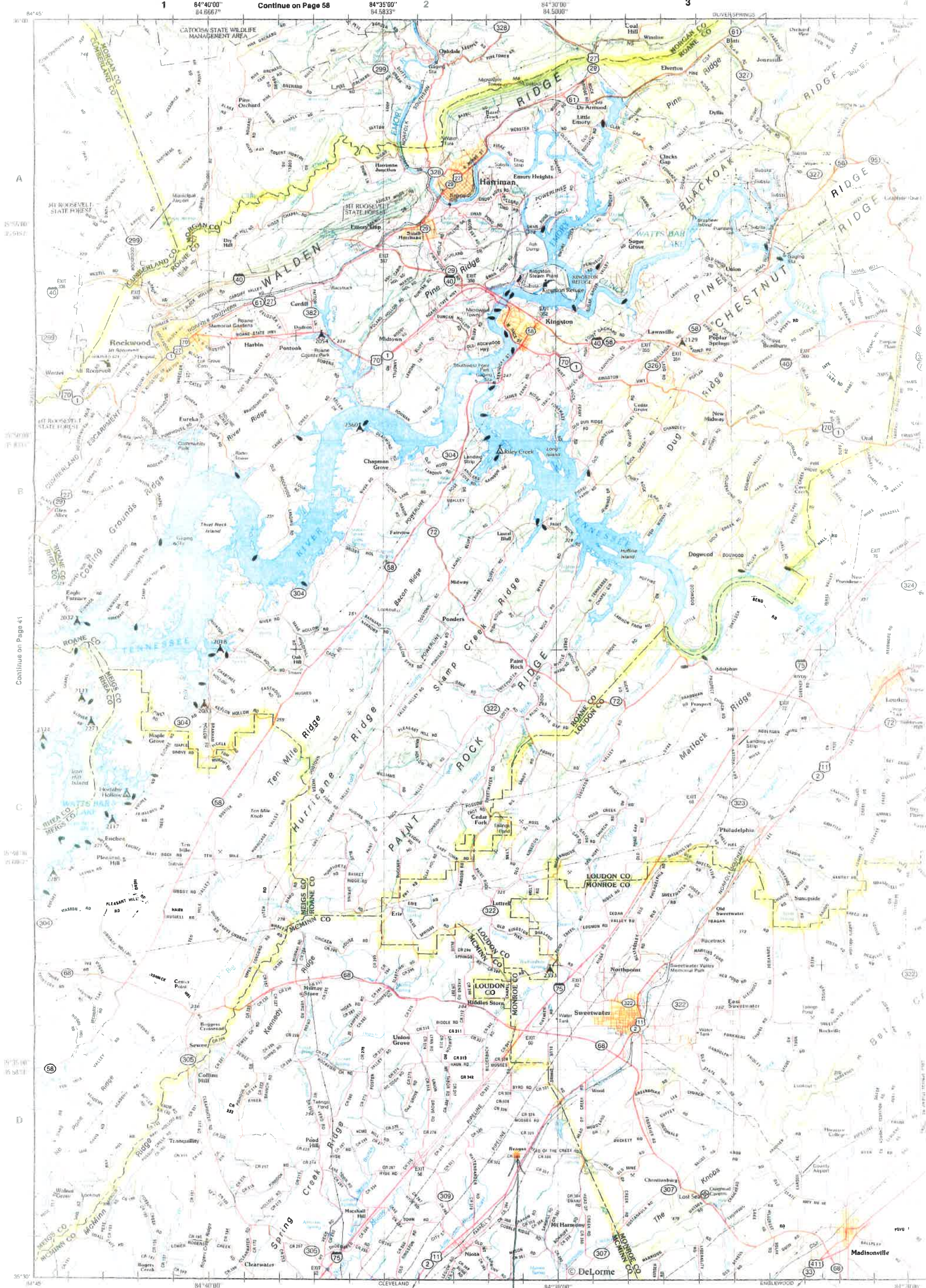
Attachment B – Site Map

Include a copy of your site map(s) in Attachment B.

Attachment C – 2015 MSGP

Note: it is helpful to keep a printed-out copy of the 2015 MSGP so that it is accessible to you for easy reference. However, you do not need to formally incorporate the entire 2015 MSGP into your SWPPP. As an

alternative, you can include a reference to the permit and where it is kept at the site.



Plant location

Actual coordinates are 35° 32' 821 Latitude
 -84° 31' 113 Longitude

State of Tennessee (ID #02034)
Alabama Dept. of
Environmental Management
(ID #40780)

AIRL, INC.
1550 37TH STREET, NE
CLEVELAND, TENNESSEE 37312
(423) 476 - 7766 Fax: (423) 476-7714
ISO/IEC 17025:2005, PJLA - 76332
Testing Accreditation

RECEIVED MAY 12 2017

Scope of Accreditation:
Wastewater, Surface Water, Ground Water,
Drinking Water, Solids, Hazardous Waste, Soils,
Sediments, and Sludges.

Lab Report 298428

8494
A & B Equipment
Attention: Michael Lauth
2315 U.S. Hwy. 11 South
Sweetwater, TN 37874

Date Received 5 /2 /2017
Date Sampled 4/29/2017
Date Requested 5 /11/2017
Rush Status Normal
Phone (423) 337-2390

Extension

Fax

✓ eMail: michael@ab-eagleline.com

PO#

Stormwater

Sample Information

Lab Report: 298428

	Result	LCL	Method	SDL	Date	Time	Analyst
Oil & Grease-HEM	< 5 mg/L	5	EPA 1664A	5	5/8/2017	9:00	WH
TSS	15 mg/L	4	SM2540 D	4	5/4/2017	14:25	LMH

Lowest Calibration Level [LCL] - reporting limit; Sample Detection Level [SDL] - Sample Specific

QA/QC Procedures required by the Method(s) were followed unless otherwise noted. Performance and acceptance standards for required QA/QC procedures were achieved unless otherwise noted. No significant modifications have been made to the Method(s). I attest that, based upon my inquiry of those individuals immediately responsible for reviewing the information, the material contained in this report is, to the best of my knowledge and belief, accurate and complete.

These results relate only to the items tested. This report shall not be reproduced except in full and with permission of this laboratory. The laboratory retains sole ownership of data until full reimbursement has been made.

Report approved by:

Ray G. Patterson
TECHNICAL DIRECTOR

COPY

State of Tennessee (ID #02034)

Alabama Dept. of
Environmental Management
(ID #40780)

Lab Report 315534

8494

A & B Equipment

Attention: Michael Lauth

2315 U.S. Hwy. 11 South

Sweetwater, TN 37874

AIRL, INC.

1550 37TH STREET, NE
CLEVELAND, TENNESSEE 37312
(423) 476 - 7766 Fax: (423) 476-7714
ISO/IEC 17025:2005, PJLA - 76332
Testing Accreditation

Scope of Accreditation:

Wastewater, Surface Water, Ground Water,
Drinking Water, Solids, Hazardous Waste, Soils,
Sediments, and Sludges.

Date Received 6/25/2019

Date Sampled 6/20/2019

Date Requested 7/2/2019

Rush Status ASAP

Phone (423) 337-2390

Extension

Fax

eMail: michael@ab-eagleline.com

PO#

Sample Information

A & B Equipment
Stormwater

Lab Report: 315534

Result

LCL

Method

SDL

Date

Time

Analyst

TSS

60 mg/L

4

SM2540 D

4

6/25/2019 10:45

LMH

Lowest Calibration Level [LCL] - reporting limit; Sample Detection Level [SDL] - Sample Specific

QA/QC Procedures required by the Method(s) were followed unless otherwise noted. Performance and acceptance standards for required QA/QC procedures were achieved unless otherwise noted. No significant modifications have been made to the Method(s). I attest that, based upon my inquiry of those individuals immediately responsible for reviewing the information, the material contained in this report is, to the best of my knowledge and belief, accurate and complete.

These results relate only to the items tested. This report shall not be reproduced except in full and with permission of this laboratory. The laboratory retains sole ownership of data until full reimbursement has been made.

Report approved by:


TECHNICAL DIRECTOR

State of Tennessee (ID #02034)

Alabama Dept. of
Environmental Management
(ID #40780)

AIRL, INC.

1550 37TH STREET, NE
CLEVELAND, TENNESSEE 37312
(423) 476 - 7766 Fax: (423) 476-7714

Scope of Accreditation:

Wastewater, Surface Water, Ground Water,
Drinking Water, Solids, Hazardous Waste, Soils,
Sediments, and Sludges.

Lab Report 315533

ISO/IEC 17025:2005, PJLA - 76332
Testing Accreditation

Date Received 6/25/2019

Date Sampled 6/22/2019

Date Requested 7/2/2019

Rush Status ASAP

Phone (423) 337-2390

Extension

Fax

eMail: michael@ab-eagleline.com

PO#

8494

A & B Equipment

Attention: Michael Lauth

2315 U.S. Hwy. 11 South

Sweetwater, TN 37874

Sample Information

A & B Equipment
Stormwater

Lab Report: 315533

Result

LCL

Method

SDL

Date

Time

Analyst

Oil & Grease-HEM

6.1 mg/L

5

EPA 1664A

5

7/3/2019 9:30

BW

Lowest Calibration Level [LCL] - reporting limit; Sample Detection Level [SDL] - Sample Specific

QA/QC Procedures required by the Method(s) were followed unless otherwise noted. Performance and acceptance standards for required QA/QC procedures were achieved unless otherwise noted. No significant modifications have been made to the Method(s). I attest that, based upon my inquiry of those individuals immediately responsible for reviewing the information, the material contained in this report is, to the best of my knowledge and belief, accurate and complete.

These results relate only to the items tested. This report shall not be reproduced except in full and with permission of this laboratory. The laboratory retains sole ownership of data until full reimbursement has been made.

Report approved by:


TECHNICAL DIRECTOR

State of Tennessee (ID #02034)

Alabama Dept. of
Environmental Management
(ID #40780)

Lab Report 324305

8494

A & B Equipment

Attention: Michael Lauth

2315 U.S. Hwy. 11 South

Sweetwater, TN 37874

AIRL, INC.

1550 37TH STREET, NE
CLEVELAND, TENNESSEE 37312
(423) 476-7766 Fax: (423) 476-7714
ISO/IEC 17025:2017, PJLA-76332
Testing Accreditation

Scope of Accreditation:

Wastewater, Surface Water, Ground Water,
Drinking Water, Solids, Hazardous Waste, Soils,
Sediments, and Sludges.

Date Received 6 /25/2020

Date Sampled 6/24/2020

Date Requested 7 /7 /2020

Rush Status Normal

Phone (423) 337-2390

Extension

Fax

eMail: michael@ab-eagleline.com

PO#

Sample Information

A & B Equipment
Stormwater

Lab Report: 324305

Result

LCL Method

SDL

Date

Time Analyst

Oil & Grease-HEM

10.1 mg/L

5

EPA1664A

5

7/2/2020 8:30

BJP

TSS

103 mg/L

4

SM2540 D

4

6/26/2020 13:00

LMH

Lowest Calibration Level [LCL] - reporting limit; Sample Detection Level [SDL] - Sample Specific

QA/QC Procedures required by the Method(s) were followed unless otherwise noted. Performance and acceptance standards for required QA/QC procedures were achieved unless otherwise noted. No significant modifications have been made to the Method(s). I attest that, based upon my inquiry of those individuals immediately responsible for reviewing the information, the material contained in this report is, to the best of my knowledge and belief, accurate and complete.

These results relate only to the items tested. This report shall not be reproduced except in full and with permission of this laboratory. The laboratory retains sole ownership of data until full reimbursement has been made.

Report approved by:


TECHNICAL DIRECTOR

RECEIVED JUL 10 2020

State of Tennessee (ID #02034)

Alabama Dept. of
Environmental Management
(ID #40780)

Lab Report 333089

8494

A & B Equipment

Attention: Michael Lauth

2315 U.S. Hwy. 11 South

Sweetwater, TN 37874

AIRL, INC.

1550 37TH STREET, NE
CLEVELAND, TENNESSEE 37312
(423) 476-7766 Fax: (423) 476-7714
ISO/IEC 17025:2017, PJLA-76332
Testing Accreditation

Scope of Accreditation:

Wastewater, Surface Water, Ground Water,
Drinking Water, Solids, Hazardous Waste, Soils,
Sediments, and Sludges.

Date Received 7 /13/2021

Date Sampled 7/12/2021

Date Requested 7 /23/2021

Rush Status Normal

Phone (423) 337-2390

Extension

Fax

eMail: michael@ab-eagleline.com

PO#

Sample Information

A & B Equipment
Stormwater

Lab Report: 333089


	Result	LCL	Method	SDL	Date	Time	Analyst
Oil & Grease-HEM	6.6 mg/L	5	EPA 1664A	5	7/14/2021	14:00	CP
TSS	75 mg/L	4	SM2540 D	4	7/14/2021	8:00	LMH

Lowest Calibration Level [LCL] - reporting limit; Sample Detection Level [SDL] - Sample Specific

QA/QC Procedures required by the Method(s) were followed unless otherwise noted. Performance and acceptance standards for required QA/QC procedures were achieved unless otherwise noted. No significant modifications have been made to the Method(s). I attest that, based upon my inquiry of those individuals immediately responsible for reviewing the information, the material contained in this report is, to the best of my knowledge and belief, accurate and complete.

These results relate only to the items tested. This report shall not be reproduced except in full and with permission of this laboratory. The laboratory retains sole ownership of data until full reimbursement has been made.

Report approved by:


TECHNICAL DIRECTOR

RECEIVED JUL 22 2021

Storm Water Quarterly, Potential Pollutant Sources Inspection Checklist

Facility Name	A & B Equipment	NPDES Tracking No.	TNB 054.361		
Address	2315 U.S. Hwy 11 South Sweetwater TN 37874				
Date / Quarter	9-29-21	Weather	clear	Time of Observation	10:28
Inspector name / title	Michael P Lauth				

Area of Potential Pollutants	Any Signs of Pollution (Y/N)?	Describe
Products storage	NO	
Waste dumpster	NO	
Scrap metal dumpster	NO	
Erosion (gravel driveway and parking)	NO	
Other		

Measures that will be taken to address observed issues: _____

Signature of Inspector: Mark Smith Date: 9-29-21

Annual Comprehensive Site Compliance Evaluation Checklist					
Facility Name	A & B Equipment		NPDES Tracking No.	9-29-21	
Address	2315 U.S. Hwy 11 South Sweetwater TN 37879				
Date / Quarter	9-29-21	Weather	Sunny Blue Sky		Time of Observation
Inspector name / title	Michael Louth V.P.				

Instructions: Conduct a walk-through inspection of the entire site, looking for signs of pollution. Include a visual examination of the stormwater outfalls and the potential pollutant sources. Review inspection documentation from previous year and SWPPP.

- Are any signs of pollution evident during the walk-through of the site? Y/N. If yes, then describe.

NO

- Have all sources of pollution noted in the quarterly visual inspections been documented and addressed? Y/N; If no, then describe.

Yes

- Review the SWPPP. Update any changes with a red pen, as needed, and re-sign the document. Note any revisions here.

None

- Overall, does site appear to be implemented Best Management Practices to minimize pollutants in Pasco Products stormwater discharge? Y/N; If no, then describe.

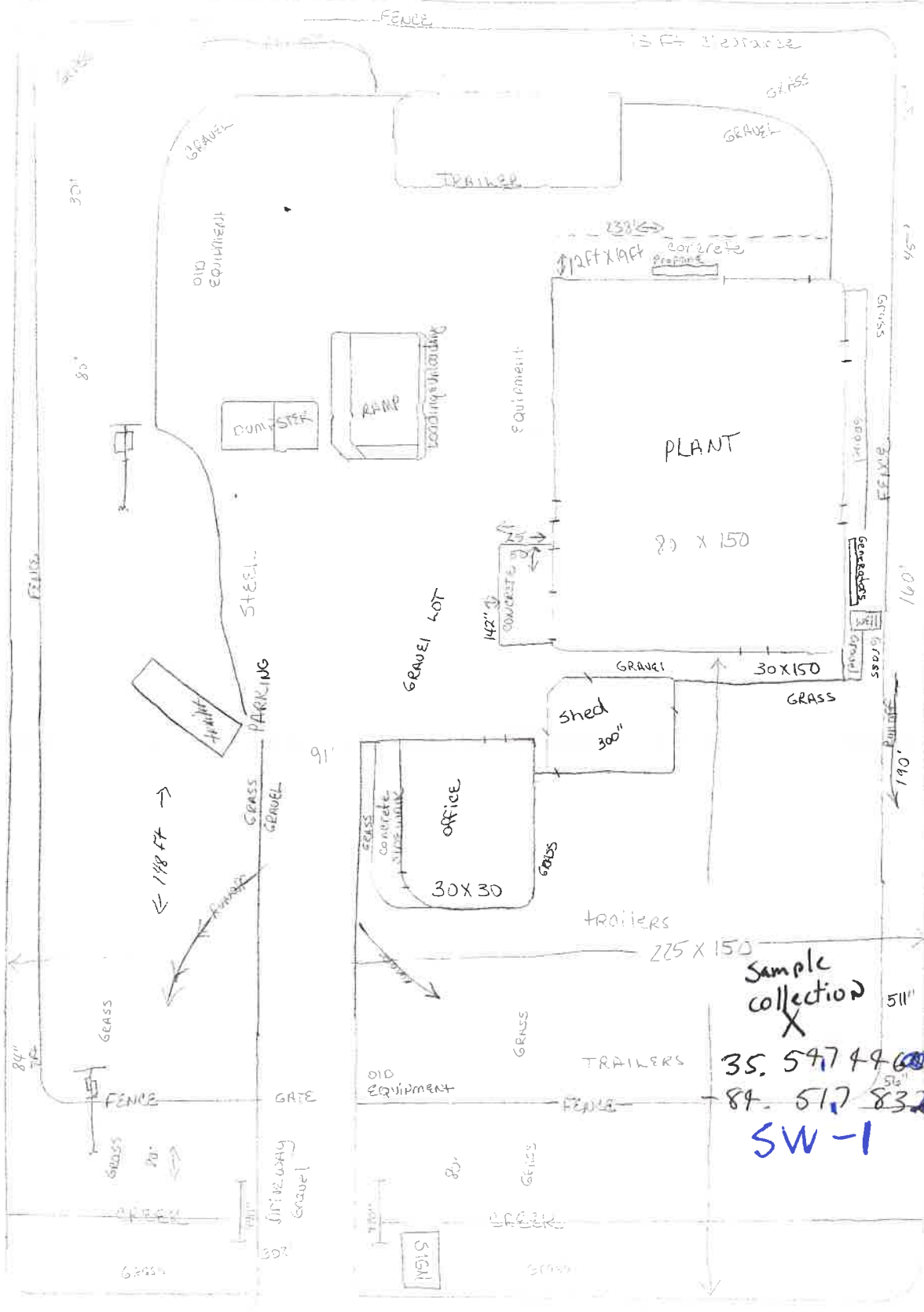
Yes Area Driveway and Dumpsters are clean

See back page for certification.

I certify under penalty of law that this document and all attachments were prepared under my direction or supervision in accordance with a system designed to assure that qualified personnel properly gathered and evaluated the information submitted. Based on my inquiry of the person or persons who manage the system, or those persons directly responsible for gathering the information, the information submitted is, to the best of my knowledge and belief, true, accurate and complete. I am aware that there are significant penalties for submitting false information, including the possibility of fine and imprisonment for knowing violations.

Name: Michael Lauth
Signature: Michael Lauth

Title: V.P.
Date: 9-29-21



TRUCK
TO TRAILER
IN BACK

Sample
collection
X

35,547.44
- 84,517.83
SW-1

Handwritten notes at the bottom left of the page, including '300' and '100' with arrows pointing to specific areas on the site plan.

FW: [EXTERNAL] SWPPP for A&B Equipment and Documentation Tracking number TNR054361

Nikki Carpenter <Nikki.Carpenter@tn.gov>

Tue 10/5/2021 9:05 AM

To: Barbara Russell <Barbara.Russell@tn.gov>; Cali Dobbins <Cali.Dobbins@tn.gov>

 3 attachments (1 MB)

SWPPP 1 2021.pdf; SWPPP 2 2021.pdf; SWPPP 3 2021.pdf;

Please upload to TNR054361. Thanks!

**Nikki Carpenter** | Environmental Scientist

Division of Water Resources

Chattanooga Environmental Field Office

1301 Riverfront Parkway, Suite 206

Chattanooga, TN 37402

p. 423-661-5267

Nikki.Carpenter@tn.govtn.gov/environment

From: michael <michael@ab-eagleline.com>**Sent:** Thursday, September 30, 2021 12:56 PM**To:** Nikki Carpenter <Nikki.Carpenter@tn.gov>**Subject:** [EXTERNAL] SWPPP for A&B Equipment and Documentation Tracking number TNR054361

***** This is an EXTERNAL email. Please exercise caution. DO NOT open attachments or click links from unknown senders or unexpected email - STS-Security. *****

Nikki Carpenter

Good Afternoon

Here is the SWPPP for A&B Equipment

There 3 attachments I scanned the documents

I am going to keep all of this here in a binder

I also have the inspection sheets and will keep them and do the inspections

If I have missed something please let me know and I will fix it

Thanks

Michael Lauth**A & B Equipment, Inc.****2315 U. S. Hwy. 11 South****Sweetwater, TN 37874-5059****Phone: 423-337-2390**michael@ab-eagleline.com