



STATE OF TENNESSEE  
**DEPARTMENT OF ENVIRONMENT AND CONSERVATION**  
**DIVISION OF WATER RESOURCES**

Davy Crockett Tower, 9<sup>th</sup> Floor  
500 James Robertson Parkway  
Nashville, Tennessee 37243

June 25, 2024

Honorable Neil Pucciarelli  
Mayor  
e-copy: Cityhall@townofcumberlandgap.com  
Town of Cumberland Gap

Subject: **Draft of NPDES Permit No. TN0060747**  
**Town of Cumberland Gap**  
**Cumberland Gap, Claiborne County, Tennessee**

Dear Mayor Pucciarelli:

Enclosed please find a draft copy of the NPDES Permit No. TN0060747, which the Division of Water Resources proposes to issue. This draft copy is furnished to you solely for your review of its provisions. No wastewater discharges are authorized by this draft permit. The issuance of this permit is contingent upon your meeting all of the requirements of the Tennessee Water Quality Control Act and the Rules and Regulations of the Tennessee Water Quality, Oil and Gas Board.

Also enclosed is a copy of the public notice that announces our intent to issue this permit. The notice affords the public an opportunity to review the draft permit and, if necessary, request a public hearing on this issuance process. If you disagree with the provisions and requirements contained in the draft permit, you have thirty (30) days from the date of this correspondence to notify the division of your objections. If your objections cannot be resolved, you may appeal this permit upon issuance. This appeal should be filed in accordance with Section 69-3-110 of the Tennessee Code Annotated.

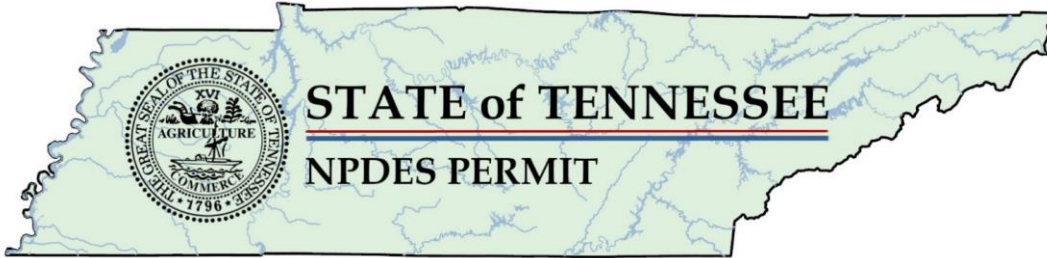
If you have questions, please contact the Knoxville EFO at 1-888-891-TDEC; or, at this office, please contact Ms. Priyaa Dhasarathy at (615) 913-0076 or by E-mail at [Priyaa.Dhasarathy@tn.gov](mailto:Priyaa.Dhasarathy@tn.gov).

Sincerely,

Vojin Janjić  
Manager, Water-Based Systems

Enclosure

cc: Permit File  
Knoxville Environmental Field Office (EFO)  
Mr. Jesse Thompson, Wastewater Manager, Sneedville STP, [wastewaterspecialist@hotmail.com](mailto:wastewaterspecialist@hotmail.com)



**Authorization to Discharge Under the  
National Pollutant Discharge Elimination System (NPDES)  
Permit Number TN0060747**

---

Issued by  
**Department of Environment and Conservation  
Division of Water Resources  
Davy Crockett Tower, 9<sup>th</sup> Floor  
500 James Robertson Parkway  
Nashville, Tennessee 37243**

Under authority of the Tennessee Water Quality Control Act of 1977 (T.C.A. 69-3-101 et seq.) and the delegation of authority from the United States Environmental Protection Agency under the Federal Water Pollution Control Act, as amended by the Clean Water Act of 1977 (33 U.S.C. 1251, et seq.)

Permittee: **Town of Cumberland Gap  
Cumberland Gap STP**

is authorized to discharge: treated domestic wastewater from Outfall 001  
from a facility located at: South Cumberland Drive, Cumberland Gap, Claiborne County,  
Tennessee  
to receiving waters named: Gap Creek at mile 8.7  
in accordance with effluent limitations, monitoring requirements and other conditions set  
forth herein.

This permit shall become effective on:

This permit shall expire on:

Issuance date:

**DRAFT**

---

for April Grippo  
Interim Director

## Table of Contents

---

PART 1 .....	1
1. Effluent Limitations and Monitoring Requirements .....	1
1.1. Numeric and Narrative Effluent Limitations .....	1
1.1.1. Numeric Limitations .....	1
1.1.2. Collection System Requirements .....	5
1.1.3. Narrative Conditions .....	5
1.2. Monitoring Procedures.....	6
1.2.1. Representative Sampling.....	6
1.2.2. Sampling Frequency .....	7
1.2.3. Test Procedures.....	8
1.2.4. Recording of Results.....	8
1.2.5. Records Retention.....	9
1.3. Reporting.....	9
1.3.1. Monitoring Results .....	9
1.3.2. Additional Monitoring by Permittee .....	9
1.3.3. Falsifying Results and/or Reports .....	10
1.3.4. Monthly Report of Operation.....	10
1.3.5. Sanitary Sewer Overflow, Release, and Bypass Reporting .....	10
1.3.5.1. Event Report Requirements .....	10
1.3.5.2. DMR Report Requirements .....	11
1.3.6. Reporting Less Than Detection; Reporting Significant Figures .....	12
1.3.7. Outlier Data .....	12
1.4. Compliance with Section 208.....	13
1.5. Reopener Clause .....	13
1.6. Schedule of Compliance .....	14
1.7. Electronic Reporting.....	14
PART 2 .....	15
2. General Permit Requirements.....	15
2.1. General Provisions .....	15
2.1.1. Duty to Comply .....	15
2.1.2. Duty to Reapply.....	15
2.1.3. Proper Operation and Maintenance .....	15
2.1.4. Duty to Provide Information .....	16

2.1.5.	Right of Entry.....	16
2.1.6.	Availability of Reports .....	16
2.1.7.	Treatment Facility Failure (Industrial Sources).....	16
2.1.8.	Property Rights.....	16
2.1.9.	Severability.....	17
2.1.10.	Other Information.....	17
2.2.	Changes Affecting the Permit .....	17
2.2.1.	Planned Changes.....	17
2.2.2.	Permit Modification, Revocation, or Termination.....	17
2.2.3.	Change of Ownership.....	18
2.2.4.	Change of Mailing Address.....	19
2.3.	Noncompliance.....	19
2.3.1.	Reporting of Noncompliance .....	19
2.3.2.	Sanitary Sewer Overflows and Releases.....	21
2.3.3.	Upset.....	22
2.3.4.	Adverse Impact .....	23
2.3.5.	Bypass .....	23
2.3.6.	Washout.....	24
2.4.	Liabilities.....	24
2.4.1.	Civil and Criminal Liability .....	24
2.4.2.	Liability Under State Law.....	24
PART 3	.....	25
3.	Permit Specific Requirements .....	25
3.1.	Certified Operator .....	25
3.2.	POTW Pretreatment Program General Provisions.....	25
3.3.	Biosolids Management Practices.....	27
3.4.	Placement of Signs.....	28
PART 4	.....	30
4.	Definitions and Acronyms.....	30
4.1.	Definitions .....	30
4.2.	Acronyms and Abbreviations.....	38
4.3.	Resources, Hyperlinks, and Web Pages.....	40
RATIONALE	.....	R-1
1.	Permit Status & Public Participation .....	R-1
2.	Facility Information .....	R-2
3.	Receiving Stream Information.....	R-3
4.	New Permit Limitations and Compliance Schedule Summary .....	R-3

5.	Permit History.....	R-4
5.1.	Previous Permit Term Review.....	R-4
5.2.	Permit Timeline .....	R-4
6.	Proposed Effluent Limits and Rationale.....	R-6
6.1.	Conventional Parameters.....	R-7
6.1.1.	CBOD <sub>5</sub> and Dissolved Oxygen .....	R-7
6.1.2.	Total Suspended Solids (TSS).....	R-7
6.1.3.	Percent Removal .....	R-7
6.1.4.	Settleable Solids .....	R-8
6.2.	Flow .....	R-8
6.3.	pH.....	R-8
6.4.	Ammonia (NH <sub>3</sub> -N).....	R-8
6.5.	Chlorination .....	R-11
6.6.	Total Nitrogen and Total Phosphorus.....	R-12
6.7.	<i>E. coli</i> .....	R-13
6.8.	Biomonitoring.....	R-14
7.	Collection Systems .....	R-14
7.1.	Collection System Certified Operator .....	R-14
7.2.	Collection System Operation .....	R-14
8.	Other Permit Requirements and Conditions .....	R-15
8.1.	Certified Wastewater Treatment Operator .....	R-15
8.2.	Pretreatment Program .....	R-15
8.3.	Biosolids Management Practices.....	R-16
8.4.	Permit Term .....	R-16
8.5.	Electronic Reporting.....	R-16
8.6.	Antidegradation Statement / Water Quality Status.....	R-17
Appendix 1 –Previous Permit Limits.....		R-19
Appendix 2 – DMR Summary.....		R-20
Appendix 3 – Receiving Stream Low Flow Determination .....		R-28

## PART 1

### 1. EFFLUENT LIMITATIONS AND MONITORING REQUIREMENTS

#### 1.1. NUMERIC AND NARRATIVE EFFLUENT LIMITATIONS

##### 1.1.1. Numeric Limitations

Town of Cumberland Gap is authorized to discharge treated municipal wastewater from Outfall 001 to Gap Creek at mile 8.7 from a treatment facility with a design capacity of 0.1 MGD. Discharge from Outfall 001 shall be limited and monitored by the permittee as specified below:

Outfall 001, Effluent, All Year							
Code	Parameter	Qualifier	Value	Unit	Sample Type	Monitoring Frequency	Statistical Base
00300	Oxygen, dissolved (DO)	>=	6.0	mg/L	Grab	5/Week	Instantaneous Minimum
00400	pH	>=	6.0	SU	Grab	5/Week	Minimum
00400	pH	<=	9.0	SU	Grab	5/Week	Maximum
00530	Total Suspended Solids (TSS)	<=	30	mg/L	Composite	1/Week	Monthly Average
00530	Total Suspended Solids (TSS)	<=	45	mg/L	Composite	1/Week	Daily Maximum
00530	Total Suspended Solids (TSS)	<=	40	mg/L	Composite	1/Week	Weekly Average
00530	Total Suspended Solids (TSS)	<=	33	lb/d	Composite	1/Week	Weekly Average
00530	Total Suspended Solids (TSS)	<=	25	lb/d	Composite	1/Week	Monthly Average
00545	Settleable Solids	<=	1.0	mL/L	Grab	5/Week	Daily Maximum
00600	Nitrogen, total (as N)	Report	-	mg/L	Composite	Quarterly	Daily Maximum
00600	Nitrogen, total (as N)	Report	-	lb/d	Composite	Quarterly	Daily Maximum
00665	Phosphorus, total (as P)	Report	-	mg/L	Composite	Quarterly	Daily Maximum
00665	Phosphorus, total (as P)	Report	-	lb/d	Composite	Quarterly	Daily Maximum
50050	Flow	Report	-	MGD	Continuous	Daily	Daily Maximum
50050	Flow	Report	-	MGD	Continuous	Daily	Monthly Average
50060	Chlorine, total residual (TRC)	<=	.02	mg/L	Grab	5/Week	Daily Maximum
50060	Chlorine, total residual (TRC)	<=	.01	mg/L	Grab	5/Week	Monthly Average
51040	E. coli	<=	126	#/100mL	Grab	1/Week	Monthly Geometric Mean
51040	E. coli	<=	410	#/100mL	Grab	1/Week	Daily Maximum

Outfall, 001, Effluent, Summer							
Code	Parameter	Qualifier	Value	Unit	Sample Type	Monitoring Frequency	Statistical Base
00610	Nitrogen, Ammonia total (as N)	<=	1.3	lb/d	Composite	1/Week	Weekly Average
00610	Nitrogen, Ammonia total (as N)	<=	2.0	mg/L	Composite	1/Week	Daily Maximum
00610	Nitrogen, Ammonia total (as N)	<=	1.5	mg/L	Composite	1/Week	Weekly Average
00610	Nitrogen, Ammonia total (as N)	<=	.8	lb/d	Composite	1/Week	Monthly Average
00610	Nitrogen, Ammonia total (as N)	<=	1.0	mg/L	Composite	1/Week	Monthly Average
80082	CBOD, 5-day, 20 C	<=	15	lb/d	Composite	1/Week	Monthly Average
80082	CBOD, 5-day, 20 C	<=	26	mg/L	Composite	1/Week	Weekly Average
80082	CBOD, 5-day, 20 C	<=	18	mg/L	Composite	1/Week	Monthly Average
80082	CBOD, 5-day, 20 C	<=	35	mg/L	Composite	1/Week	Daily Maximum
80082	CBOD, 5-day, 20 C	<=	22	lb/d	Composite	1/Week	Weekly Average

Outfall, 001, Effluent, Winter							
Code	Parameter	Qualifier	Value	Unit	Sample Type	Monitoring Frequency	Statistical Base
00610	Nitrogen, Ammonia total (as N)	<=	2.6	mg/L	Composite	1/Week	Daily Maximum
00610	Nitrogen, Ammonia total (as N)	<=	1.3	mg/L	Composite	1/Week	Monthly Average
00610	Nitrogen, Ammonia total (as N)	<=	2.0	mg/L	Composite	1/Week	Weekly Average
00610	Nitrogen, Ammonia total (as N)	<=	1.7	lb/d	Composite	1/Week	Weekly Average
00610	Nitrogen, Ammonia total (as N)	<=	1.1	lb/d	Composite	1/Week	Monthly Average
80082	CBOD, 5-day, 20 C	<=	40	mg/L	Composite	1/Week	Daily Maximum
80082	CBOD, 5-day, 20 C	<=	25	mg/L	Composite	1/Week	Monthly Average
80082	CBOD, 5-day, 20 C	<=	35	mg/L	Composite	1/Week	Weekly Average
80082	CBOD, 5-day, 20 C	<=	21	lb/d	Composite	1/Week	Monthly Average
80082	CBOD, 5-day, 20 C	<=	29	lb/d	Composite	1/Week	Weekly Average

Outfall, 001, Percent Removal, All Year							
Code	Parameter	Qualifier	Value	Unit	Sample Type	Monitoring Frequency	Statistical Base
80358	CBOD, 5-day, 20 C, % removal	>=	40	%	Composite	Weekly	Daily Minimum
80358	CBOD, 5-day, 20 C, % removal	>=	85	%	Composite	Weekly	Monthly Average Minimum
81011	TSS, % removal	>=	85	%	Composite	Weekly	Monthly Average Minimum
81011	TSS, % removal	>=	40	%	Composite	Weekly	Daily Minimum

Influent, INF1, Raw Sewage Influent, All Year							
Code	Parameter	Qualifier	Value	Unit	Sample Type	Monitoring Frequency	Statistical Base
00530	Total Suspended Solids (TSS)	Report	-	mg/L	Composite	Weekly	Daily Maximum
00530	Total Suspended Solids (TSS)	Report	-	mg/L	Composite	Weekly	Monthly Average
50050	Flow	Report	-	MGD	Continuous	Daily	Daily Maximum
50050	Flow	Report	-	MGD	Continuous	Daily	Monthly Average
80082	CBOD, 5-day, 20 C	Report	-	mg/L	Composite	Weekly	Daily Maximum
80082	CBOD, 5-day, 20 C	Report	-	mg/L	Composite	Weekly	Monthly Average

General <a href="#">MyTDEC Forms</a> Report Requirements*	
Bypass of Treatment Facility	See Section 1.3.5.1. and 2.3.5.
Anticipated Bypass of Treatment Facility	See Section 1.3.5.1. and 2.3.5.
Five-day Follow-up Noncompliance Report	See Sections 1.3.5.1. and 2.3.1.a.
Scheduled Reporting	See Section 2.3.1.b.

\* Each event shall be reported via MyTDEC Forms.

Notes:

The permittee shall achieve 85 % removal of CBOD<sub>5</sub> and TSS on a monthly average basis. The permittee shall report all instances of releases, sanitary sewer overflows and/or bypasses. See **Part 2.3.2(a)** for the definition of sanitary sewer overflow and **Part 1.3.5** for reporting requirements.

Calculations for all limitations which require averaging of measurements shall utilize an arithmetic mean unless otherwise specified in the permit.

Unless elsewhere specified, summer months are May through October; winter months are November through April.

See **Part 1.2.3** for test procedures.

See below for percent removal calculations.



The permittee may collect more samples than specified as the monitoring frequency in the permit. Samples may not be collected at intervals of less than 12 hours. For the purpose of determining the geometric mean, individual samples having an *E. coli* group concentration of less than 1 per 100 mL shall be considered as having a concentration of 1 per 100 mL. In addition, the concentration of the *E. coli* group in any individual sample shall not exceed a specified maximum amount.

Total residual chlorine (TRC) monitoring shall be applicable when chlorine, bromine, or any other oxidants are added. The acceptable methods for analysis of TRC are any methods specified in Title 40 CFR § 136 as amended, so long as the requirements of Tennessee Rule [0400-40-03-05\(8\)](#) are met. The method detection limit (MDL) should be determined in accordance with 40 CFR § 136 as amended, Appendix B. The MDL for TRC shall not exceed 0.05 mg/l unless the permittee demonstrates that its MDL is higher. The permittee shall retain the documentation that justifies the MDL and have it available for review upon request. In cases where the permit limit is less than the MDL, the reporting of TRC at less than the MDL shall be interpreted to constitute compliance with the permit.

A monthly average limit for TRC has been added to the renewed permit. The criterion continuous concentration (chronic exposure) of 0.011 mg/L is for protection of fish and aquatic life designated use of the receiving stream. Considering the reported Total Residual Chlorine (TRC) will be that of the effluent, exceedance above the monthly average value of 0.011 mg/L will be considered a violation. See 1.3.6 for reporting requirements and guidance.

For CBOD<sub>5</sub> and TSS, the treatment facility shall demonstrate a minimum of 85% removal efficiency on a monthly average basis. This is calculated by determining an average of all daily influent concentrations and comparing this to an average of all daily effluent concentrations. The formula for this calculation is as follows:

$$\left(1 - \frac{\text{average of daily effluent concentrations}}{\text{average of daily influent concentrations}}\right) * 100\% = \% \text{ removal}$$

This treatment facility will also demonstrate 40% daily minimum removal of CBOD<sub>5</sub> and TSS based on each daily composite sample. The formula for this calculation is as follows:

$$\left(1 - \frac{\text{daily effluent concentration}}{\text{daily influent concentration}}\right) * 100\% = \% \text{ removal}$$

Monitoring and reporting requirements for both total nitrogen (TN) and total phosphorus (TP) begin the effective date of the permit.

Each daily load is calculated by multiplying the day's sample concentration (mg/L) by the effluent flow rate (MGD) for the day the sample was collected and the conversion factor 8.34 lbs/gal.

$$\text{Load} = \left(\frac{\text{Effluent Concentration}}{\text{Concentration}}\right) * \left(\frac{\text{Effluent flow for the day the}}{\text{day the sample was collected}}\right) * (8.34)$$

**1.1.2. Collection System Requirements**

Town of Cumberland Gap is authorized to operate a sewage collection system. Operation and discharges from the collection system shall be limited and monitored by the permittee as specified below:

Code	Monitoring	Parameter	Qualifier	Value	Unit	Sample Type	Monitoring Frequency	Statistical Base
51925	Dry Weather	SSO, Dry Weather	<=	0	occur/mo	Occurrences	Continuous	Monthly Total
51926	Wet Weather	SSO, Wet Weather	<=	0	occur/mo	Occurrences	Continuous	Monthly Total

Report via NetDMR. See sections **1.3.1.** and **1.3.5.2.**

Collection System <b>MyTDEC Forms</b> Report Requirements*	
Sanitary Sewer Overflow (SSO, Dry Weather)	See Section 1.3.5.1.
Sanitary Sewer Overflow (SSO, Wet Weather)	See Section 1.3.5.1.
Release (Dry Weather)	See Section 1.3.5.1.
Release (Wet Weather)	See Section 1.3.5.1.
Five-day Follow-up Noncompliance Report	See Sections 1.3.5.1. and 2.3.1.

\* Each event shall be reported via MyTDEC Forms.

**1.1.3. Narrative Conditions**

Due Date	Narrative Requirement
120 days from permit effective date	The permittee shall submit the results of an Industrial Waste Survey (IWS) to the Division of Water Resources, Pretreatment Section within 120 days of the effective date of this permit, unless such a survey has been submitted within 3 years of the effective date. If an IWS has been submitted within the past 3 years, the permittee shall notify the Division of the date when the IWS was previously submitted to the Division. The IWS shall be submitted to the following email address: <a href="mailto:DWRWater.Compliance@tn.gov">DWRWater.Compliance@tn.gov</a> .

The authorized discharge shall not:

- Result in distinctly visible solids, scum, foam, oily slick, or the formation of slimes, bottom deposits, or sludge banks of such size or character as may be detrimental to fish and aquatic life.
- Result in total suspended solids, turbidity, or color in such amounts or character that will result in any objectionable appearance to the receiving water, considering the nature and location of the water.
- Contain pollutants in quantities that will be hazardous or otherwise detrimental to humans, livestock, wildlife, plant life, or fish and aquatic life in the receiving stream.

Sludge or any other material removed by any treatment works must be disposed of in a manner that prevents its entrance into or pollution of any surface or subsurface waters. Additionally, the disposal of such sludge or other material must be in compliance with the Tennessee Solid Waste Disposal Act, Tennessee Code Annotated (Tenn. Code Ann.) §68-31-101 et seq. and the Tennessee Hazardous Waste Management Act, Tenn. Code Ann. §68-46-101 et. seq.

## **1.2. MONITORING PROCEDURES**

### **1.2.1. Representative Sampling**

Samples and measurements taken in compliance with the monitoring requirements specified herein shall be representative of the volume and nature of the monitored discharge and shall be taken after treatment and prior to mixing with uncontaminated stormwater runoff or the receiving stream. Appropriate flow measurement devices and methods consistent with accepted scientific practices shall be selected and used to ensure the accuracy and reliability of measurements of the volume of monitored discharges. The devices shall be installed and calibrated by a qualified source at least once every 12 months<sup>1</sup>, and maintained to ensure that the accuracy of the measurements is consistent with accepted capability of that type of device. Devices selected shall be capable of measuring flows with a maximum deviation of plus or minus 10% from the true discharge rates throughout the range of expected discharge volumes.

Composite samples must be proportioned by flow at the time of sampling. Aliquots may be collected manually or automatically. The sample aliquots must be maintained at  $\leq 6^{\circ}\text{C}$  during the compositing period, or as otherwise specified in 40 CFR §136 or in the method.

---

<sup>1</sup> The Division expects for permittees to meet EPA's guidance on proper operation and maintenance of flow measurement devices, as stated in the [NPDES Compliance Inspection Manual](#).

Samples and measurements taken in compliance with the monitoring requirements specified above shall be representative of the volume and nature of the monitored discharge, and shall be taken at the following location(s):

**Influent samples** must be collected prior to mixing with any other wastewater being returned to the head of the plant, such as sludge return. Those systems with more than one influent line must collect samples from each and proportion the results by the flow from each line.

**Effluent samples** must be representative of the wastewater being discharged and collected prior to mixing with any other discharge or the receiving stream. This can be a different point for different parameters but must be after all treatment for that parameter or all expected changes. Specifically:

- a) The chlorine residual must be measured after the chlorine contact chamber and any dechlorination. It may be to the advantage of the permittee to measure at the end of any long outfall lines.
- b) Samples for *E. coli* can be collected at any point between completion of disinfection and the actual discharge.
- c) The dissolved oxygen (DO) can drop in the outfall line; therefore, DO measurements are required at the discharge end of outfall lines greater than one mile long. Systems with outfall lines less than one mile may measure dissolved oxygen as the wastewater leaves the treatment facility. For systems with dechlorination, DO must be measured after this step and as close to the end of the outfall line as possible.
- d) Total suspended solids (TSS) and settleable solids can be collected at any point after the final clarifier.
- e) Biomonitoring tests (if required) shall be conducted on final effluent.

### **1.2.2. Sampling Frequency**

The permittee should report "No Discharge" on Discharge Monitoring Reports (DMRs) only if a permitted outfall does not discharge at any time during the monitoring period. If the outfall discharges effluent at any time during the monitoring period, the permittee must provide at least one sampling result from the effluent of that outfall.

If the required monitoring frequency is once per month or 1/month, the monitoring period is one month. If the discharge occurs during only one day in that period, the permittee must sample on that day and report the results of analyses accordingly.

### **1.2.3. Test Procedures**

- a) Test procedures for the analysis of pollutants shall conform to regulations published pursuant to Section 304 (h) of the Clean Water Act (the "Act"), as amended, under which such procedures may be required.
- b) Unless otherwise noted in the permit, all pollutant parameters shall be determined using sufficiently sensitive methods in Title 40 CFR § 136, as amended, and promulgated pursuant to Section 304 (h) of the Act. The chosen methods must be sufficiently sensitive as required in state rule 0400-40-03-.05(8).
- c) If the minimum level of quantification (ML) for all methods available in accordance with 40 CFR § 136 are above the stated permit limit or applicable water quality criteria for that parameter, then the method with the lowest ML shall be used.
- d) Where the analytical results are below the method detection limit (MDL), the permittee shall report the actual laboratory MDL and ML values. See **Section 1.3.6.** for instructions regarding reporting less than detection.
- e) When there is no analytical method that has been approved under 40 CFR §136 or required under 40 CFR chapter I, subchapter N or O, and a specific method is not otherwise required by the Director, the permittee may use any suitable method but shall provide a description of the method. When selecting a suitable method, factors such as a method's precision, accuracy, or resolution must be considered when assessing the performance of the method.

### **1.2.4. Recording of Results**

For each measurement or sample taken pursuant to the requirements of this permit, the permittee shall record the following information:

- i. The date, exact place, and time of sampling or measurements;
- ii. The individual(s) who performed the sampling or measurements;
- iii. The date analyses were performed;
- iv. The individual(s) who performed the analyses;

- v. The laboratory where the analyses were performed;
- vi. The analytical techniques or methods used; and
- vii. The results of such analyses.

#### **1.2.5. Records Retention**

The permittee shall retain records of all monitoring information, including all calibration and maintenance records and all original strip chart recordings for continuous monitoring instrumentation, copies of all reports required by this permit, and records of all data used to complete the application for this permit, for a period of at least 3 years from the date of the sample, measurement, report or application. This period may be extended by request of the Director at any time.

### **1.3. REPORTING**

#### **1.3.1. Monitoring Results**

Monitoring results shall be recorded monthly and submitted monthly on Discharge Monitoring Reports (DMRs) using EPA's [NetDMR](#) website. The first DMR is due on the 15th of the month following permit effectiveness. Subsequent DMRs shall be submitted through NetDMR no later than 15 days after the completion of the reporting period. In compliance with the Federal NPDES Electronic Reporting Rule, DMRs may not be submitted via email under any circumstances.

Discharge Monitoring Reports and any other information or report must be signed and certified by a responsible corporate officer as defined in Tennessee Rules, Chapter [0400-40-05-.07\(2\)\(i\)](#), a general partner or proprietor, a principal municipal executive officer or ranking elected official, or his or her duly authorized representative. Such authorization must be submitted in writing and must explain the duties and responsibilities of the authorized representative.

In the event that electronic reporting is unavailable, the permittee shall comply with reporting conditions provided in **Section 1.7**.

#### **1.3.2. Additional Monitoring by Permittee**

If the permittee monitors any pollutant more frequently than required by the permit using test procedures approved under 40 CFR § 136, or as specified in the permit, the results of this monitoring shall be included in the calculation and reporting of the data submitted in the DMR or other reporting form specified by the Commissioner. Such increased frequency shall also be indicated.

**1.3.3. Falsifying Results and/or Reports**

Knowingly making any false statement on any report required by this permit or falsifying any result may result in the imposition of criminal penalties as provided for in Section 309 of the Federal Water Pollution Control Act, as amended, and in § 69-3-115 of the Tennessee Water Quality Control Act.

**1.3.4. Monthly Report of Operation**

Monthly Operational Reports (MORs) shall be submitted by the 15<sup>th</sup> day of the month following data collection. Reports shall be submitted by one of the following methods, presented below in order of preference:

- 1) Using [MyTDEC Forms](#), if available.
- 2) Submitting both a signed and certified copy in pdf format, uploaded as an attachment to NetDMR, *and* a copy of the native format spreadsheet file emailed to [DWRWW.Report@tn.gov](mailto:DWRWW.Report@tn.gov) and the Knoxville EFO:

Chattanooga	<a href="mailto:TDEC.Chattanooga.EFO@tn.gov">TDEC.Chattanooga.EFO@tn.gov</a>
Columbia	<a href="mailto:TDEC.Columbia.EFO@tn.gov">TDEC.Columbia.EFO@tn.gov</a>
Cookeville	<a href="mailto:TDEC.Cookeville.EFO@tn.gov">TDEC.Cookeville.EFO@tn.gov</a>
Jackson	<a href="mailto:TDEC.Jackson@tn.gov">TDEC.Jackson@tn.gov</a>
Johnson City	<a href="mailto:TDEC.JohnsonCity.EFO@tn.gov">TDEC.JohnsonCity.EFO@tn.gov</a>
Knoxville	<a href="mailto:TDEC.KEFO.DWRPermits@tn.gov">TDEC.KEFO.DWRPermits@tn.gov</a>
Memphis	<a href="mailto:TDEC.Memphis.EFO@tn.gov">TDEC.Memphis.EFO@tn.gov</a>
Nashville	<a href="mailto:DWR.NEFO@tn.gov">DWR.NEFO@tn.gov</a>

- 3) Submitting signed and certified forms to the EFO at the following address:

STATE OF TENNESSEE  
DEPARTMENT OF ENVIRONMENT AND CONSERVATION  
DIVISION OF WATER RESOURCES  
Knoxville Environmental Field Office  
3711 Middlebrook Pike  
Knoxville, Tennessee 37921

**1.3.5. Sanitary Sewer Overflow, Release, and Bypass Reporting**

**1.3.5.1. Event Report Requirements**

For the purpose of this section, "events" are known as instances of sanitary sewer overflows, releases, upsets, and bypasses. These events shall be reported through [MyTDEC Forms](#) according to the following conditions:

- a) Events that are not a threat to human health and the environment shall be reported using MyTDEC Forms no later than 15 days following the completion of the DMR reporting period.
- b) Events that could cause a threat to human health or the environment, as defined in **Section 2.3.1.a.**, shall be reported using MyTDEC Forms no later than 5 days after becoming aware of the non-compliance.

In both cases, the event report must contain the following:

- i. Start date;
- ii. Estimated duration in hours;
- iii. Estimated volume in gallons;
- iv. Type of event;
- v. Type of structure (e.g., manhole);
- vi. Types of human health and environmental impacts;
- vii. Location (i.e., latitude and longitude);
- viii. The name of receiving water (if applicable);
- ix. Description of the cause;
- x. The steps being taken to correct, reduce, eliminate, and prevent recurrence of the noncompliance; and
- xi. The next downstream pump/lift station using the permittee's naming conventions.

In the event that MyTDEC Forms is not functioning, the permittee shall comply with reporting conditions provided in **Section 1.7**.

#### **1.3.5.2. DMR Report Requirements**

On the DMR, the permittee must separately report:

- i. The total number of wet-weather sanitary sewer overflows for the reporting month; and
- ii. The total number of dry-weather sanitary sewer overflows for the reporting month.

On the DMR, sanitary sewer overflows are coded "SSO, Dry Weather" and "SSO, Wet Weather". Each discrete location of a sanitary sewer overflow shall be reported as a separate value.



### **1.3.6. Reporting Less Than Detection; Reporting Significant Figures**

For the purpose of evaluating compliance with the permit limits established herein, where certain limits are below the minimum level (ML) of 40 CFR § 136 approved analytical methods, compliance will be demonstrated when a non-detect result is obtained using the most sensitive method available. The results of non-detect analyses, in this case, shall be reported as Below Detection Limit (BDL) or "NODI = B" in NetDMR. Reporting examples are provided below.

Reporting Example 1: If the permit limit is 0.02 mg/L with a method detection limit (MDL) of 0.05 mg/L and no detection is shown, the permittee must report "BDL" or "NODI = B" on DMRs in NetDMR. Whenever "BDL" or "NODI = B" is reported, the actual MDL must be reported in the DMR comments or in an attachment submitted in NetDMR.

Reporting Example 2: If the permit limit is 0.02 mg/L with an MDL of 0.05 mg/L and detection is shown, the actual detected value must be reported.

Reporting Example 3: If the permit limit is 0.02 mg/L with an MDL of 0.01 mg/L and no detection is shown, the permittee must report less than MDL (<0.01 mg/L in this case).

For purposes of calculating averages, zero may be assigned for values less than the MDL, the numeric value of the MDL may be assigned for values between the MDL and the ML. If the average value is less than the MDL, the permittee must report "less than {numeric value of the MDL}" and if the average value is less than the ML, the permittee must report "less than {numeric value of the ML}." If a value is equal to or greater than the ML, the permittee must report and use the actual value. The resulting average value must be compared to the compliance level, the ML, in assessing compliance.

Reported results are to correspond to the number of significant figures (decimal places) set forth in the permit conditions. The permittee shall round values, if allowed by the method of sample analysis, using a uniform rounding convention adopted by the permittee.

### **1.3.7. Outlier Data**

Outlier data include analytical results that are probably false. The validity of results is based on operational knowledge and a properly implemented quality assurance program. False results may include laboratory artifacts, potential sample tampering, broken or suspect sample containers, sample contamination or similar demonstrated quality control flaw.

Outlier data are identified through a properly implemented quality assurance program, and according to ASTM standards (e.g. Grubbs Test, 'h' and 'k' statistics). Furthermore, outliers should be verified, corrected, or removed based on further inquiries into the matter. If an outlier was verified (through repeated testing and/or analysis), it should remain in the preliminary data set. If an outlier resulted from a transcription or similar clerical error, it should be corrected and subsequently reported.

Therefore, only if an outlier was associated with problems in the collection or analysis of the samples and as such does not conform with the Guidelines Establishing Test Procedures for the Analysis of Pollutants (40 CFR §136), can it be removed from the data set and not reported on DMRs. Otherwise, all results (including monitoring of pollutants more frequently than required at the location(s) designated, using approved analytical methods as specified in the permit) should be included in the calculation and reporting of the values required in the DMR form. The permittee should use the "comment" section in NetDMR to explain any potential outliers or dubious results.

**1.4. COMPLIANCE WITH SECTION 208**

The limits and conditions in this permit shall require compliance with an area-wide waste treatment plan (208 Water Quality Management Plan) where such approved plan is applicable.

**1.5. REOPENER CLAUSE**

This permit shall be modified, or alternatively revoked and reissued, to comply with any applicable effluent standard or limitation issued or approved under Sections 301(b)(2)(C) and (D), 307(a)(2), and 405(d)(2)(D) of the Clean Water Act, as amended, if the effluent standard, limitation, or sludge disposal requirement so issued or approved:

- a) Contains different conditions or is otherwise more stringent than any condition in the permit; or
- b) Controls any pollutant or disposal method not addressed in the permit.

The permit as modified or reissued under this paragraph shall also contain any other requirements of the Act then applicable.

**1.6. SCHEDULE OF COMPLIANCE**

Full compliance and operational levels shall be attained from the effective date of this permit, except for conditions under compliance schedules. See **Section 1.1.** for numeric and narrative requirements.

**1.7. ELECTRONIC REPORTING**

This permit requires the submission of forms developed by the Director in order for a person to comply with certain requirements, including, but not limited to, making reports, submitting monitoring results, and applying for permits. The Director may make these forms available electronically and, if submitted electronically, then that electronic submission shall comply with the requirements of Chapter [0400-01-40](#). Electronic submission is required when available unless waived by the Commissioner in accordance with 40 C.F.R. § 127.15.

In the event of large-scale emergencies and/or prolonged electronic reporting system outages, an episodic electronic reporting waiver may be granted by the Commissioner in accordance with 40 CFR § 127.15. A request for a deadline extension or episodic electronic reporting waiver should be submitted to [DWRWater.Compliance@tn.gov](mailto:DWRWater.Compliance@tn.gov), in compliance with the Federal NPDES Electronic Reporting Rule.

If an episodic electronic reporting waiver is granted, reports with wet-ink original signatures shall be mailed to the following address:

*DEPARTMENT OF ENVIRONMENT AND CONSERVATION  
DIVISION OF WATER RESOURCES  
COMPLIANCE & ENFORCEMENT UNIT  
Davy Crockett Tower, 9<sup>th</sup> Floor  
500 James Robertson Parkway  
Nashville, Tennessee 37243*

For purposes of determining compliance with this permit, data provided to the Division electronically is legally equivalent to data submitted on signed and certified forms. A copy must be retained for the permittee's files.

---

## **PART 2**

---

### **2. GENERAL PERMIT REQUIREMENTS**

#### **2.1. GENERAL PROVISIONS**

##### **2.1.1. Duty to Comply**

The permittee shall comply with all conditions of this permit. Any permit noncompliance constitutes a violation of the Act and is grounds for enforcement action; for permit termination, revocation and reissuance, or modification; or denial of a permit renewal application.

##### **2.1.2. Duty to Reapply**

The permittee is not authorized to discharge after the expiration date of this permit. In order to receive authorization to discharge beyond the expiration date, the permittee shall submit such information and forms as are required to the Division Director no later than 180 days prior to the expiration date. Such forms shall be properly signed and certified.

##### **2.1.3. Proper Operation and Maintenance**

- a) The permittee shall at all times properly operate and maintain all facilities and systems of treatment and control (and related appurtenances, including but not limited to collection and conveyance systems) which are installed or used by the permittee to achieve compliance with the conditions of this permit. Low pressure pumps, low pressure tanks, septic tank effluent pumps (STEP), STEP tanks, and septic tank effluent gravity tanks are integral to the treatment and conveyance of sewage in a low-pressure system design, and shall be owned or under control of the municipality, other body of government, public utility district, or a privately-owned public utility demonstrating lawful jurisdiction over the service area. Proper operation and maintenance also includes adequate laboratory controls and appropriate quality assurance procedures. This provision requires the operation of backup or auxiliary facilities or similar systems, which are installed by a permittee only when the operation is necessary to achieve compliance with the conditions of the permit.
- b) Dilution water shall not be added to comply with effluent requirements to achieve BCT, BPT, BAT, or other technology based effluent limitations such as those established in Tennessee Rule [0400-40-05-.09](#).

**2.1.4. Duty to Provide Information**

The permittee shall also furnish to the Director, upon request, copies of records required to be kept by this permit.

**2.1.5. Right of Entry**

The permittee shall allow the Director, the Regional Administrator of the U.S. Environmental Protection Agency, or their authorized representatives, upon the presentation of credentials, to:

- a) Enter upon the permittee's premises where a regulated facility or activity is located or conducted, or where records shall be kept under the conditions of this permit;
- b) Have access to and copy, at reasonable times, any records that shall be kept under the conditions of this permit;
- c) Inspect at reasonable times any facilities, equipment (including monitoring and control equipment), practices, or operations regulated or required under this permit; and
- d) Sample or monitor at reasonable times for the purposes of assuring permit compliance or as otherwise authorized by the Director.

**2.1.6. Availability of Reports**

Except for data determined to be confidential under Section 308 of the Federal Water Pollution Control Act, as amended, all reports prepared in accordance with the terms of this permit shall be available for public inspection at the Division's offices or via the Department's [dataviewer webpage](#). As required by the Federal Act, effluent data shall not be considered confidential.

**2.1.7. Treatment Facility Failure (Industrial Sources)**

The permittee, in order to maintain compliance with this permit, shall control production, all discharges, or both, upon reduction, loss, or failure of the treatment facility until the facility is restored or an alternative method of treatment is provided. This requirement applies in such situations as the reduction, loss, or failure of the primary source of power.

**2.1.8. Property Rights**

The issuance of this permit does not convey any property rights in either real or personal property, or any exclusive privileges, nor does it authorize any injury to

private property or any invasion of personal rights, nor any infringement of federal, state, or local laws or regulations.

**2.1.9. Severability**

The provisions of this permit are severable. If any provision of this permit due to any circumstance is held invalid, then the application of such provision to other circumstances and to the remainder of this permit shall not be affected thereby.

**2.1.10. Other Information**

If the permittee becomes aware of failure to submit any relevant facts in a permit application, or of submission of incorrect information in a permit application or in any report to the Director, then the permittee shall promptly submit such facts or information.

**2.2. CHANGES AFFECTING THE PERMIT**

**2.2.1. Planned Changes**

The permittee shall give notice to the Director as soon as possible of any planned physical alterations or additions to the permitted facility. Notice is required only when:

- a) The alteration or addition to a permitted facility may meet one of the criteria for determining whether a facility is a new source as defined in Rule [0400-40-05-.02](#);
- b) The alteration or addition could significantly change the nature or increase the quantity of pollutants discharged. This notification applies to pollutants which are subject neither to effluent limitations in the permit nor to notification requirements under 40 CFR § 122.42(a)(1); or
- c) The alteration or addition results in a significant change in the permittee's sludge use or disposal practices.

**2.2.2. Permit Modification, Revocation, or Termination**

- a) This permit may be modified, revoked and reissued, or terminated for cause as described in 40 CFR § 122.62 and § 122.64, Federal Register, Volume 49, No. 188 (Wednesday, September 26, 1984), as amended. Causes for such permit action include but are not limited to the following:

- i. Violation of any terms or conditions of the permit;

- ii. Obtaining a permit by misrepresentation or failure to disclose fully all relevant facts; and
  - iii. A change in any condition that requires either a temporary or permanent reduction or elimination of the permitted discharge.
- b) The permittee shall furnish to the Director, within a reasonable time, any information which the Director may request to determine whether cause exists for modifying, revoking and reissuing, or terminating this permit, or to determine compliance with this permit.
- c) If any applicable effluent standard or prohibition (including any schedule of compliance specified in such effluent standard or prohibition) is established for any toxic pollutant under Section 307(a) of the Federal Water Pollution Control Act, as amended, the Director shall modify or revoke and reissue the permit to conform to the prohibition or to the effluent standard, providing that the effluent standard is more stringent than the limitation in the permit for the toxic pollutant. The permittee shall comply with these effluent standards or prohibitions within the time provided in the regulations that establish these standards or prohibitions, even if the permit has not yet been modified or revoked and reissued to incorporate the requirement.
- d) The filing of a request by the permittee for a modification, revocation, reissuance, termination, or notification of planned changes or anticipated noncompliance does not halt any permit condition.

### **2.2.3. Change of Ownership**

Except as provided in Tennessee Rule Chapter [0400-40-05-.06\(5\)](#)(a) or (b), this permit may be transferred to another party (provided there are neither modifications to the facility or its operations, nor any other changes which might affect permit limits and conditions contained in the permit) by the permittee if:

- a) The permittee notifies the Director of the proposed transfer at least 30 days in advance of the proposed transfer date;
- b) The notice includes a written agreement between the existing and new permittees containing a specified date for transfer of permit responsibility, coverage, and liability between them; and
- c) The permittee shall provide the following information to the Director in the permittee's formal notice of intent to transfer ownership:

- i. The permit number of the subject permit;
- ii. The effective date of the proposed transfer;
- iii. The name, address, and contact information of the transferor;
- iv. The name, address, and contact information of the transferee;
- v. The names of the responsible parties for both the transferor and transferee;
- vi. A statement that the transferee assumes responsibility for the subject permit;
- vii. A statement that the transferor relinquishes responsibility for the subject permit;
- viii. The signatures of the responsible parties for both the transferor and transferee pursuant to the signatory requirements of subparagraph (i) of Rule [0400-40-05-.07\(2\)](#); and
- ix. A statement regarding any proposed modifications to the facility, its operations, or any other changes, which might affect the permit, limits and conditions contained in the permit.

#### **2.2.4. Change of Mailing Address**

The permittee shall promptly provide to the Director written notice of any change of mailing address. In the absence of such notice, the original address of the permittee will be assumed to be correct.

### **2.3. NONCOMPLIANCE**

#### **2.3.1. Reporting of Noncompliance**

##### a) 24-hour Reporting:

In the case of any noncompliance, or any release (whether or not caused by improper operation and maintenance), which could cause a threat to human health or the environment, the permittee shall:

- i. Report the noncompliance or release to the Commissioner within 24 hours from the time the permittee becomes aware of the circumstances. Such noncompliance or release includes, but is not limited to, any unanticipated bypass exceeding any effluent limitation, any upset exceeding any effluent limitation, and violations of any maximum daily effluent limitation identified in the permit as requiring 24-hour reporting. (The EFO should be contacted for names and phone numbers of the environmental response team.)



- ii. Submit a written report within five days of the time the permittee becomes aware of the noncompliance. The permittee shall provide the following information:
    - 1. A description of and the cause of the noncompliance or release;
    - 2. The period of noncompliance or release, including start and end dates and times i.e. duration or, if not corrected, the anticipated time the noncompliance or release is expected to continue;
    - 3. The steps being taken to reduce, eliminate, and prevent recurrence of the noncompliance or release; and
    - 4. For POTWs or domestic wastewater treatment plants, reporting any dry weather overflow, wet weather overflow, dry weather release, wet weather release, combined sewer overflow, or bypass, this written report must also include the following:
      - I. Type of event;
      - II. Type of sanitary sewer overflow, release, or bypass structure (e.g., manhole, combined sewer overflow outfall);
      - III. Estimated volume (gallons);
      - IV. Types of human health and environmental impacts;
      - V. Location (latitude and longitude);
      - VI. Estimated duration (hours);
      - VII. The next downstream pump station (for sanitary sewer overflows and releases only); and
      - VIII. The name of receiving water (if applicable).
  - iii. Industrial dischargers that do not treat domestic waste shall comply with subpart a) ii. 4. of this subparagraph with respect to bypasses only.
  - iv. For sanitary sewer overflows, releases, bypasses, upsets and washouts, the report required by a) ii. Shall be submitted electronically via MyTDEC Forms.
- b) Other Noncompliance.
- i. All permittees shall report each instance of noncompliance or any release (whether or not caused by improper operation and maintenance), not reported under sub-part a) at the time of submitting the next routine

monitoring report, including all information required by sub-parts a) ii. 1-3.

- ii. In addition to the information required by part i of this sub-part, POTWs and domestic wastewater treatment plants shall submit a written report containing the information required by sub-part a) ii. 4. If these events are caused by an extreme weather event, the Commissioner may provide a written waiver of some or all of these reporting requirements.
- iii. In addition to the information required by sub-part i, industrial dischargers shall submit a written report of bypasses containing the information required by sub-part a) i. 4. This part does not relieve industrial dischargers from any applicable reporting requirements of 40 C.F.R. Part 117 (2021) and 40 C.F.R. Part 302 (2021).

### **2.3.2. Sanitary Sewer Overflows and Releases**

- a) For publicly owned treatment works (POTW) or domestic wastewater treatment plants, sanitary sewer overflows, including dry-weather overflows and wet weather overflows, are prohibited.
- b) Releases caused by improper operation and maintenance, which is to be determined by the Commissioner based on the totality of the circumstances, are prohibited.
- c) The permittee shall operate the collection, transmission, and treatment system so as to avoid sanitary sewer overflows and releases due to improper operation or maintenance. A "release" may be due to improper operation or maintenance of the collection system or may be due to other cause(s).
- d) The permittee shall take all reasonable steps to minimize any adverse impact associated with sanitary sewer overflows and releases.
- e) No new or additional flows shall be added upstream of any point in the collection, transmission, or treatment system that experiences greater than 5 sanitary sewer overflows and/or releases per year<sup>2</sup> or would otherwise

---

<sup>2</sup> This includes dry weather overflows, wet weather overflows, dry weather releases and wet weather releases.

overload any portion of the system. Unless there is specific enforcement action to the contrary, the permittee is relieved of this requirement after:

- 1) An authorized representative of the Commissioner of the Department of Environment and Conservation has approved an engineering report and construction plans and specifications prepared in accordance with accepted engineering practices for correction of the problem;
- 2) The correction work is underway; and
- 3) The cumulative, peak-design flows potentially added from new connections and line extensions upstream of any chronic sanitary sewer overflow or release point are less than or proportional to the amount of inflow and infiltration removal documented upstream from that point.

The inflow and infiltration reduction must be measured by the permittee using practices that are customary in the environmental engineering field and reported in an attachment to the permittee's DMR and uploaded to NetDMR. The data measurement period shall be sufficient to account for seasonal rainfall patterns and seasonal groundwater table elevations.

- f) In the event that chronic sanitary sewer overflows or releases have occurred from a single point in the collection system for reasons that may not warrant the self-imposed moratorium of the actions identified in this paragraph, the permittee may request a meeting with Division EFO staff to petition for a waiver based on mitigating evidence.
- g) For industrial dischargers, the discharge of pollutants from any location other than a permitted outfall is prohibited.

### **2.3.3. Upset**

- a) An upset shall constitute an affirmative defense to an action brought for noncompliance with technology-based permit effluent limitations if the permittee demonstrates, through properly signed, contemporaneous operating logs, or other relevant evidence that:
  - i. An upset occurred and that the permittee can identify the cause(s) of the upset;
  - ii. The permitted facility was at the time being operated in a prudent and workman-like manner and in compliance with proper operation and maintenance procedures;

- iii. The permittee submitted information required under “Reporting of Noncompliance” within 24 hours of becoming aware of the upset (if this information is provided orally, a written submission must be provided within five days); and
  - iv. The permittee complied with any remedial measures required under “Adverse Impact”.
- b) In any enforcement proceeding, the permittee seeking to establish the affirmative defense of an upset has the burden of proof.

#### **2.3.4. Adverse Impact**

The permittee shall take all reasonable steps to minimize any adverse impact to the waters of Tennessee resulting from noncompliance with this permit, including such accelerated or additional monitoring as necessary to determine the nature and impact of the noncomplying discharge. It shall not be a defense for the permittee in an enforcement action that it would have been necessary to halt or reduce the permitted activity in order to maintain compliance with the conditions of this permit.

#### **2.3.5. Bypass**

- a) Bypasses (see subpart 4.1) are prohibited unless all the following conditions are met:
- i. The bypass is unavoidable to prevent loss of life, personal injury, or severe property damage;
  - ii. There are no feasible alternatives to bypass, such as the use of auxiliary treatment facilities, retention of untreated wastes, or maintenance during normal periods of equipment downtime. This condition is not satisfied if adequate back-up equipment should have been installed in the exercise of reasonable engineering judgment to prevent a bypass which occurred during normal periods of equipment downtime or preventative maintenance; and
    - a. For anticipated bypass, the permittee submits prior notice, if possible at least ten days before the date of the bypass, or
    - b. For unanticipated bypass, the permittee submits notice of an unanticipated bypass within 24 hours from the time that the permittee becomes aware of the bypass.
- b) Bypasses that do not cause effluent limitations to be exceeded may be allowed only if the bypass is necessary for essential maintenance to assure efficient operation. The permittee must sample and report the discharge during each

bypass to demonstrate that the bypass does not cause effluent limitations to be exceeded.

### **2.3.6. Washout**

- a) For domestic wastewater plants only, a "washout" shall be defined as loss of Mixed Liquor Suspended Solids (MLSS) of 30.00% or more. This refers to the MLSS in the aeration basin(s) only. This does not include MLSS decreases due to solids wasting to the sludge disposal system. A washout can be caused by improper operation or from peak flows due to inflow and infiltration.
- b) A washout is prohibited. If a washout occurs the permittee must report the incident to the Division in the appropriate EFO within 24 hours by telephone. A written submission must be provided within five days. The washout must be noted on that month's DMR. Each day of a washout is a separate violation.

## **2.4. LIABILITIES**

### **2.4.1. Civil and Criminal Liability**

Except as provided in permit conditions for "Bypass" (**Section 2.3.5**), "Sanitary sewer overflows and Releases" (**Section 2.3.2**), and "Upset" (**Section 2.3.3**), nothing in this permit shall be construed to relieve the permittee from civil or criminal penalties for noncompliance. Notwithstanding this permit, the permittee shall remain liable for any damages sustained by the State of Tennessee, including, but not limited to, fish kills and losses of aquatic life and/or wildlife as a result of the discharge of wastewater to any surface or subsurface waters. Additionally, notwithstanding this permit, it shall be the responsibility of the permittee to conduct its wastewater treatment and/or discharge activities in a manner such that public or private nuisances or health hazards will not be created.

### **2.4.2. Liability Under State Law**

Nothing in this permit shall be construed to preclude the institution of any legal action or relieve the permittee from any responsibilities, liabilities, or penalties established pursuant to any applicable state law or the Federal Water Pollution Control Act, as amended.

---

## PART 3

---

### 3. PERMIT SPECIFIC REQUIREMENTS

#### 3.1. CERTIFIED OPERATOR

The waste treatment facilities shall be operated under the supervision of a certified wastewater treatment operator, and the collection system shall be operated under the supervision of a certified collection system operator in accordance with the Water Environmental Health Act of 1984.

#### 3.2. POTW PRETREATMENT PROGRAM GENERAL PROVISIONS

As an update of information previously submitted to the Division, the permittee will undertake the following activity:

- a) The permittee shall submit the results of an Industrial Waste Survey (IWS) in accordance with Rule [0400-40-14-.08-\(6\)\(b\)1](#), including any industrial users (IU) covered under Section 301(i)(2) of the Act. As much information as possible must be obtained relative to the character and volume of pollutants contributed to the POTW by the IUs. This information will be submitted to the Division of Water Resources, Pretreatment Section within one hundred twenty (120) days of the effective date of this permit, unless such a survey has been submitted within 3 years of the effective date. Development of a pretreatment program may be required after completion of the industrial user review. All requirements and conditions of the pretreatment program are enforceable through the NPDES permit.
- b) The permittee shall enforce Rule [0400-40-14-.05](#), "prohibited discharges". Pollutants introduced into the POTW by a non-domestic source shall not cause pass through or interference as defined in Rule [0400-40-14-.03](#). These general prohibitions and the specific prohibitions in this section apply to all non-domestic sources introducing pollutants into the POTW whether the source is subject to other National Pretreatment Standards or any state or local pretreatment requirements.

*Specific prohibitions:* Under no circumstances shall the permittee allow introduction of the following wastes into the POTW:

- i. Pollutants which create a fire or explosion hazard in the POTW, including, but not limited to, wastestreams with a closed cup flashpoint

- of less than 140°F or 60°C using the test methods specified in 40 CFR § 261.21
- ii. Pollutants which will cause corrosive structural damage to the POTW, but in no case discharges with pH lower than 5.0 unless the system is specifically designed to accommodate such discharges;
  - iii. Solid or viscous pollutants in amounts which will cause obstruction to the flow in the POTW resulting in interference;
  - iv. Any pollutant, including oxygen-demanding pollutants (BOD, etc.) released in a discharge at a flow rate and/or pollutant concentration which will cause interference with the POTW;
  - v. Heat in amounts which will inhibit biological activity in the POTW resulting in interference, but in no case heat in such quantities that the temperature at the POTW Treatment Plant exceeds 40°C (104°F) unless the Division, upon request of the POTW, approves alternate temperature limits;
  - vi. Any priority pollutant in amounts that will contaminate the treatment works sludge;
  - vii. Petroleum oil, nonbiodegradable cutting oil, or products of mineral oil origin in amounts that will cause interference or pass through;
  - viii. Pollutants which result in the presence of toxic gases, vapors or fumes within the POTW in a quantity that may cause acute worker health and safety problems; or
  - ix. Any trucked or hauled pollutants, except at discharge points designated by the POTW.
- c) The permittee shall notify the Division of any of the following changes in user discharge to the system no later than 30 days prior to change of discharge:
- i. New introductions into such works of pollutants from any source which would be a new source as defined in Section 306 of the Act if such source were discharging pollutants;
  - ii. New introductions of pollutants into such works from a source which would be subject to Section 301 of the "Federal Water Quality Act as Amended" if it were discharging such pollutants; or
  - iii. A substantial change in volume or character of pollutants being introduced into such works by a source already discharging pollutants into such works at the time this permit is issued.

This notice will include information on the quantity and quality of the wastewater introduced by the new source into the POTW, and on any anticipated impact on the effluent discharged from such works. If this discharge necessitates a revision of the current NPDES permit or pass-through

guidelines, discharge by this source is prohibited until the Tennessee Division of Water Resources gives final authorization.

### **3.3. BIOSOLIDS MANAGEMENT PRACTICES**

All sludge and/or biosolids use or disposal must comply with 40 CFR § 503 *et seq.* Biosolids shall be sampled and analyzed at a frequency dependent on the amount used annually.

Any facility that land applies non-exceptional quality biosolids must obtain an appropriate permit from the Division in accordance with Chapter [0400-40-15](#).

- a) Reopener: If an applicable "acceptable management practice" or numerical limitation for pollutants in sewage sludge promulgated under Section 405(d)(2) of the Clean Water Act, as amended by the Water Quality Act of 1987, is more stringent than the sludge pollutant limit or acceptable management practice in this permit, or controls a pollutant not limited in this permit, this permit shall be promptly modified or revoked and reissued to conform to the requirements promulgated under Section 405(d)(2). The permittee shall comply with the limitations by no later than the compliance deadline specified in the applicable regulations as required by Section 405(d)(2) of the Clean Water Act.
- b) Notice of change in sludge disposal practice: The permittee shall give prior notice to the Director of any change planned in the permittee's sludge disposal practice.

*STATE OF TENNESSEE  
DEPARTMENT OF ENVIRONMENT AND CONSERVATION  
DIVISION OF SOLID WASTE MANAGEMENT  
Knoxville Environmental Field Office  
3711 Middlebrook Pike  
Knoxville, Tennessee 37921  
(865)594-6035*

The current method of sludge disposal is to a municipal solid waste landfill (or co-composting facility). This method of disposal is controlled by the rules of the Tennessee Division of Solid Waste Management (DSWM) and Federal Regulations at 40 CFR § 258. If the permittee anticipates changing its disposal practices to either land application or surface disposal, the Division of Water Resources shall be notified prior to the change. A copy of any results of pollutant analyses required by the Tennessee Division of Solid Waste



Management (DSWM) and/or 40 CFR § 258 shall be submitted to the Division of Water Resources.

**3.4. PLACEMENT OF SIGNS**

The permittee shall place and maintain a sign at each outfall and any sanitary sewer overflow/release point in the collection system or the nearest publicly accessible location. For the purposes of this requirement, any point that has had a total of 5 or more overflows plus releases in the previous 12 months must be so posted. Signs at locations that are posted at the permit effective date must be maintained. Signs for locations identified during the permit term must be placed within 60 days of the event triggering the requirement.

The sign(s) should be clearly visible to the public from the bank and the receiving stream. The *minimum* sign size should be two feet by two feet (2' x 2') with one-inch (1") letters. The sign should be made of durable material and have a white background with black letters.

The sign(s) are to provide notice to the public as to the nature of the discharge and, in the case of the permitted outfalls, that the discharge is regulated by the Tennessee Department of Environment and Conservation, Division of Water Resources. The following are given as examples of the minimal amount of information that must be included on the signs:

**NPDES Permitted Municipal/Sanitary Outfall:**

**TREATED MUNICIPAL/SANITARY WASTEWATER**  
**Town of Cumberland Gap**  
**Cumberland Gap STP**  
**(423) 869-3860**  
**NPDES Permit NO. TN0060747**  
**TENNESSEE DIVISION OF WATER RESOURCES**  
**1-888-891-8332 ENVIRONMENTAL FIELD OFFICE - Knoxville**

**Unpermitted release/sanitary sewer overflow point:**

**UNTREATED WASTEWATER DISCHARGE POINT**  
**Town of Cumberland Gap**  
**Cumberland Gap STP**  
**(423) 869-3860**  
**NPDES Permit No. TN0060747**  
**TENNESSEE DIVISION OF WATER RESOURCES**  
**1-888-891-8332 ENVIRONMENTAL FIELD OFFICE - Knoxville**

The permittee may request the removal of signs for unpermitted release/sanitary sewer overflows points only. This request should be sent to Division EFO staff detailing the work that has been completed to rectify the cause(s) contributing to sanitary sewer overflows and releases at that location. In no case will approval to remove the signs be granted if either a sanitary sewer overflow or release has occurred at that location in the previous 12 months.

---

## PART 4

---

### 4. DEFINITIONS AND ACRONYMS

All terminology not specifically defined herein shall be defined in accordance with the Water Quality Control Act of 1977, T.C.A. Title 69, Chapter 3, Part 1 and Tennessee Rule 0400-40-05. The following terms have the meanings given below unless otherwise specified.

#### 4.1. DEFINITIONS

For the purposes of this permit, **annually** is defined as a monitoring frequency of once every 12 months beginning with the effective date of this permit, so long as the following set of measurements for a given 12 month period are made approximately 12 months subsequent to that time.

**Biosolids** are treated sewage sludge that have contaminant concentrations less than or equal to the contaminant concentrations listed in Table 1 of subparagraph (3)(b) of Rule [0400-40-15-.02](#), meet any one of the ten vector attraction reduction options listed in part (4)(b)1, 2, 3, 4, 5, 6, 7, 8, 9, or 10 of Rule [0400-40-15-.04](#), and meet either one of the six pathogen reduction alternatives for Class A listed in part (3)(a)3, 4, 5, 6, 7, or 8, or one of the three pathogen reduction alternatives for Class B listed in part (3)(b)2, 3, or 4 of Rule [0400-40-15-.04](#).

**Bypass** means the intentional diversion of waste streams from any portion of a treatment facility.

A **calendar day** means the 24-hour period from midnight to midnight or any other 24-hour period that reasonably approximates the midnight to midnight time period.

**Combined sewer overflow** or "CSO" means a discharge from a combined sewer system (CSS) at a point prior to the publicly owned treatment works (POTW) treatment plant headworks.

**Combined sewer system** or "CSS" means a wastewater collection system owned by a State or municipality which was originally designed to convey sanitary wastewaters (domestic, commercial, and industrial wastewaters) and stormwater through a single-pipe system into a publicly owned treatment works (POTW) treatment plant headworks.

A **composite sample** means a combination of not less than eight influent or effluent portions (aliquots), collected over a 24-hour period. Under certain circumstances a lesser time period may be allowed, but in no case less than eight hours. A sufficient volume of sample to perform all required analyses plus any additional amount for quality control must be obtained. For automatic samplers that use a peristaltic pump, a minimum 100 ml aliquot must be obtained.

The **daily maximum amount** means the total amount of any pollutant in the discharge by weight during any calendar day.

The **daily maximum concentration** is a limitation on the average concentration in units of mass per volume (e.g. milligrams per liter) of the discharge during any calendar day. When a proportional-to-flow composite sampling device is used, the daily maximum concentration is the concentration of that 24-hour composite; when other sampling means are used, the daily maximum concentration is the arithmetic mean of the concentrations of equal volume samples collected during any calendar day or sampling period.

**Degradation** means the alteration of the properties of waters by the addition of pollutants, withdrawal of water, or removal of habitat, except those alterations of a short duration.

**De Minimis** is degradation of a small magnitude, as provided in this paragraph:

(a) Discharges and withdrawals:

1. Subject to the limitation in part 3 of this subparagraph, a single discharge other than those from new domestic wastewater sources will be considered de minimis if it uses less than five percent of the available assimilative capacity for the substance being discharged.

(Note: Consistent with T.C.A. § 69-3-108, special consideration will be given to bioaccumulative substances to confirm the effect is de minimis, even if they are less than five percent of the available assimilative capacity.)

2. Subject to the limitation in part 3 of this subparagraph, a single water withdrawal will be considered de minimis if it removes less than five percent of the 7Q10 flow of the stream.
3. If more than one activity described in part 1 or 2 of this subparagraph has been authorized in a segment and the total of the authorized and proposed impacts uses no more than 10% of the assimilative capacity, or 7Q10 low flow, they are presumed to be de minimis. Where the total of the authorized and proposed impacts uses 10% of the assimilative

capacity, or 7Q10 low flow, additional degradation may only be treated as de minimis if the Division finds on a scientific basis that the additional degradation has an insignificant effect on the resource.

- (b) Habitat alterations authorized by an Aquatic Resource Alteration Permit (ARAP) are de minimis if the Division finds that the impacts, individually and cumulatively, are offset by impact minimization and/or in-system mitigation, provided however, in Outstanding National Resource Waters (ONRWs) the mitigation must occur within the ONRW.

**Discharge** or **discharge of a pollutant** refers to the addition of pollutants to waters from a source.

A **dry weather overflow** means a sanitary sewer overflow that is not directly related to a rainfall event.

An **ecoregion** is a relatively homogeneous area defined by similarity of climate, landform, soil, potential natural vegetation, hydrology, or other ecologically relevant variables.

The **geometric mean** of any set of values means the  $n^{\text{th}}$  root of the product of the individual values where  $n$  is equal to the number of individual values. The geometric mean is equivalent to the antilog of the arithmetic mean of the logarithms of the individual values. For the purposes of calculating the geometric mean, values of zero shall be considered to be one.

A **grab sample** means a single sample collected at a particular time.

**IC<sub>25</sub>** means the inhibition concentration in which at least a 25% reduction in reproduction and/or growth in test organisms occurs.

**Industrial discharger** means those industries identified in the standard industrial classification manual, Bureau of the Budget, 1987, as amended and supplemented, under the category "Division D - Manufacturing" and such other classes of significant waste producers as the Board or Commissioner deems appropriate.

**Industrial wastes** means any liquid, solid, or gaseous substance, or combination thereof, or form of energy including heat, resulting from any process of industry, manufacture, trade, or business or from the development of any natural resource.

The ***instantaneous maximum concentration*** means the concentration, in units of mass per volume, of any pollutant parameter in a grab sample taken at any point in time.

The ***instantaneous minimum concentration*** means the minimum concentration, in units of mass per volume, of a pollutant parameter in a grab sample taken at any point in time.

***LC<sub>50</sub>*** means the concentration that causes at least 50% lethality of the test organisms.

***Major facility*** means a municipal or domestic wastewater treatment plant with a design capacity of one million gallons per day or greater; or any other facility or activity classified as such by the Commissioner.

***Minor facility*** means any facility that is not a major facility.

The ***monthly average amount*** means the arithmetic mean of all the measured daily discharges by weight during the calendar month when the measurements were made.

The ***monthly average concentration***, means the arithmetic mean of all samples collected in a one calendar-month period, expressed in units of mass per volume of any pollutant other than bacteria.

***National Pollutant Discharge Elimination System*** or ***NPDES*** means the national program for issuing, modifying, revoking and reissuing, terminating, monitoring and enforcing permits, and imposing and enforcing pretreatment requirements, under sections 307, 402, 318, and 405 of the federal CWA. The term includes an "approved program."

***New or increased discharge*** is a new discharge of pollutants to waters of the state or an increase in the authorized loading of a pollutant above either (1) numeric effluent limitations established in a National Pollutant Discharge Elimination System permit for that discharge, or (2) if no such limitations exist, the actual discharges of that pollutant.

***New source*** means any building, structure, facility, area, or installation from which there is or may be a "discharge of pollutants," the construction of which commenced after the publication of state or federal regulations prescribing a standard of performance.

**Nitrate (as N)** means nitrate reported as nitrogen.

A **one-week period** (or **calendar-week**) means the period from Sunday through Saturday. For weekly average reporting purposes, a calendar week that contains a change of month shall be considered part of the latter month.

**Owner** or **operator** means any person who owns, leases, operates, controls, or supervises a source.

**Person** means an individual, association, partnership, corporation, municipality, state or federal agency, or an agent or employee thereof.

**Point source** means any discernible, confined, and discrete conveyance, including but not limited to, any pipe, ditch, channel, tunnel, conduit, well, discrete fissure, container, rolling stock, concentrated animal feeding operation, landfill leachate collection system, vessel, or other floating craft from which pollutants are or may be discharged. This term does not include return flows from irrigated agriculture or agricultural stormwater runoff.

**Pollutant** means sewage, industrial wastes, or other wastes.

**Pollution** means such alteration of the physical, chemical, biological, bacteriological, or radiological properties of the waters of this state including, but not limited to, changes in temperature, taste, color, turbidity, or odor of the waters that will:

- (a) Result or will likely result in harm, potential harm, or detriment to the public health, safety, or welfare;
- (b) Result or will likely result in harm, potential harm, or detriment to the health of animals, birds, fish, or aquatic life;
- (c) Render or will likely render the waters substantially less useful for domestic, municipal, industrial, agricultural, recreational, or other reasonable uses; or
- (d) Leave or likely leave the waters in such condition as to violate any standards of water quality established by the Board.

**Quarter** means any one of the following three-month periods: January 1 through March 31, April 1 through June 30, July 1 through September 30, and/or October 1 through December 31.

**Rainfall event** means any occurrence of rain, preceded by 10 hours without precipitation that results in an accumulation of 0.01 inches or more. Instances of rainfall occurring within 10 hours of each other will be considered a single rainfall event.

**Rationale or fact sheet** means a document that is prepared when drafting an NPDES permit or permit action. It provides the technical, regulatory and administrative basis for an agency's permit decision.

A **reference site** means the least impacted waters within an ecoregion that have been monitored to establish a baseline to which alterations of other waters can be compared.

A **reference condition** is a parameter-specific set of data from regional reference sites that establish the statistical range of values for that particular substance at least-impacted streams.

**Release** means the flow of sewage from any portion of the collection or transmission system owned or operated by a publicly owned treatment works (POTW) or a domestic wastewater treatment plant, other than through permitted outfalls, that does not reach waters. In addition, a "release" includes a backup into a building or private property that is caused by blockages, flow conditions, or other malfunctions originating in the collection or transmission system owned or operated by the permittee. A "release" does not include:

- (a) Backups into a building or private property caused by blockages or other malfunctions originating in a private lateral;
- (b) Events caused by vandalism;
- (c) Events caused by lightning strike;
- (d) Events caused by damage due to third parties working on other utilities in the right of way, e.g., cross bore from telecommunications line; or
- (e) Events that are directly incidental to planned, preventative, or predictive maintenance provided the site is under the direct control of a certified operator or contractor, public access is restricted, and the site is disinfected.

**Sanitary sewer overflow or SSO** means an unpermitted discharge of wastewater from the collection or treatment system of a publicly owned treatment works



(POTW) or a domestic wastewater treatment plant other than through a permitted outfall.

**Schedule of compliance** means a schedule of remedial measures including an enforceable sequence of actions or operations leading to compliance with an effluent limitation, condition of a permit, other limitation, prohibition, standard, or regulation. This term includes, but is not limited to, schedules authorized by national effluent limitations guidelines or by Tennessee's water quality standards.

The term **semi-annually**, for the purposes of this permit, means the same as once every 6 months. Measurements of the limited effluent parameters may be made any time during a 6 month period beginning from the effective date of this permit, so long as the second set of measurements for a given 12 month period are made approximately 6 months subsequent to that time, if feasible.

**Severe property damage**, when used to consider the allowance of a bypass, means substantial physical damage to property, damage to the treatment facilities which causes them to become inoperable, or substantial and permanent loss of natural resources which can reasonably be expected to occur in the absence of a bypass. Severe property damage does not mean economic loss caused by delays in production.

**Sewage** means water-carried waste or discharges from human beings or animals, from residences, public or private buildings, or industrial establishments, or boats, together with such other wastes and ground, surface, storm, or other water as may be present

**Sewerage system** means the conduits, sewers, and all devices and appurtenances by means of which sewage and other waste is collected, pumped, treated, or disposed.

**Sludge** or **sewage sludge** is solid, semi-solid, or liquid residue generated during the treatment of domestic sewage in a treatment works. Sewage sludge includes, but is not limited to, domestic septage; scum or solids removed in primary, secondary, or advanced wastewater treatment processes; and a material derived from sewage sludge. Sewage sludge does not include ash generated during the firing of sewage sludge in a sewage sludge incinerator or grit and screenings generated during preliminary treatment of domestic sewage in a treatment works.

**Source** means any activity, operation, construction, building, structure, facility, or installation from which there is or may be the discharge of pollutants.

**Standard of performance** means a standard for the control of the discharge of pollutants that reflects the greatest degree of effluent reduction that the Commissioner determines to be achievable through application of the best available demonstrated control technology, processes, operating methods, or other alternatives, including, where practicable, a standard permitting no discharge of pollutants.

**Stream** means a surface water that is not a wet weather conveyance.

**Subcoregion** is a smaller, more homogenous area that has been delineated within an ecoregion.

**Total dissolved solids** or **TDS** means nonfilterable residue.

**Upset** means an exceptional incident in which there is unintentional and temporary noncompliance with technology-based effluent limitations because of factors beyond the reasonable control of the permittee. An upset does not include noncompliance to the extent caused by operational error, improperly designed treatment facilities, inadequate treatment facilities, lack of preventive maintenance, or careless or improper operation.

The term **washout** is applicable to domestic wastewater activated sludge plants and means a loss of mixed liquor suspended solids (MLSS) of 30.00% or more from the aeration basin(s).

**Waters** means any and all water, public or private, on or beneath the surface of the ground, which are contained within, flow through, or border upon Tennessee or any portion thereof, except those bodies of water confined to and retained within the limits of private property in single ownership which do not combine or effect a junction with natural surface or underground waters.

**Watercourse** means a man-made or natural hydrologic feature with a defined linear channel that discretely conveys flowing water, as opposed to sheet-flow.

**Weekly average amount** means the arithmetic mean of all the measured daily discharges by weight during the calendar week when the measurements were made.

**Weekly average concentration** means the arithmetic mean of all the concentrations expressed in units of mass per volume of any pollutant measured in a calendar week.

**Wet weather conveyance** means, notwithstanding any other law or rule to the contrary, man-made or natural watercourses, including natural watercourses that have been modified by channelization:

- (a) That flow only in direct response to precipitation runoff in their immediate locality;
- (b) Whose channels are at all times above the groundwater table;
- (c) That are not suitable for drinking water supplies; and
- (d) In which hydrological and biological analyses indicate that, under normal weather conditions, due to naturally occurring ephemeral or low flow there is not sufficient water to support fish, or multiple populations of obligate lotic aquatic organisms whose life cycle includes an aquatic phase of at least two months.

**Wet weather overflow** means a sanitary sewer overflow that is directly related to a specific rainfall event.

**Wet weather release** means a release that is directly related to a specific rainfall event.

#### 4.2. **ACRONYMS AND ABBREVIATIONS**

1Q10 –	1-day minimum, 10-year recurrence interval
30Q5 –	30-day minimum, 5-year recurrence interval
7Q10 –	7-day minimum, 10-year recurrence interval
BAT –	best available technology economically achievable
BCT –	best conventional pollutant control technology
BDL –	below detection limit
BOD <sub>5</sub> –	five-day biochemical oxygen demand
BPT –	best practicable control technology currently available
CBOD <sub>5</sub> –	five-day carbonaceous biochemical oxygen demand
CEI –	compliance evaluation inspection
CFR –	code of federal regulations
CFS –	cubic feet per second
CFU –	colony forming units
CIU –	categorical industrial user
CSO –	combined sewer overflow
DMR –	discharge monitoring report
D.O. –	dissolved oxygen

<i>E. coli</i>	-	<i>Escherichia coli</i>
EPA	-	Environmental Protection Agency
EFO	-	environmental field office
GPM	-	gallons per minute
IC <sub>25</sub>	-	inhibition concentration causing 25% reduction in survival, reproduction, and growth of the test organisms
IU	-	industrial user
IWS	-	industrial waste survey
LB (lb)	-	pound
LC <sub>50</sub>	-	acute test causing 50% lethality
MDL	-	method detection limit
MGD	-	million gallons per day
mg/L	-	milligrams per liter
ML	-	minimum level of quantification
mL	-	milliliter
MLSS	-	mixed liquor suspended solids
MOR	-	monthly operating report
NODI	-	no discharge code in NetDMR
NPDES	-	national pollutant discharge elimination system
PL	-	permit limit
POTW	-	publicly owned treatment works
SAR	-	semi-annual report [pretreatment program]
SIU	-	significant industrial user
SSO	-	sanitary sewer overflow
STP	-	sewage treatment plant
TBEL	-	technology-based effluent limit
TCA	-	Tennessee code annotated
TDEC	-	Tennessee Department of Environment and Conservation
TIE/TRE	-	toxicity identification evaluation/toxicity reduction evaluation
TMDL	-	total maximum daily load
TRC	-	total residual chlorine
TSS	-	total suspended solids
WQBEL	-	water quality-based effluent limit

#### 4.3. RESOURCES, HYPERLINKS, AND WEB PAGES

Clean Water Act NPDES Electronic Reporting (eReporting) Information

<https://www.epa.gov/compliance/npdes-ereporting>

Electronic Code of Federal Regulations (eCFR), Title 40 (40 CFR § 1 through § 1099)

[https://www.ecfr.gov/cgi-bin/text-idx?SID=75202eb5d09974cab585afeea981220b&mc=true&tpl=/ecfrbrowse/Title40/40chapt\\_eri.tpl](https://www.ecfr.gov/cgi-bin/text-idx?SID=75202eb5d09974cab585afeea981220b&mc=true&tpl=/ecfrbrowse/Title40/40chapt_eri.tpl)

Electronic Reporting (NetDMR) Waiver Request

[https://www.tn.gov/content/dam/tn/environment/water/documents/wr\\_ereporting\\_waiver.pdf](https://www.tn.gov/content/dam/tn/environment/water/documents/wr_ereporting_waiver.pdf)

Low Flow Statistics Tools: A How-To Handbook for NPDES Permit Writers (EPA)

[https://www.epa.gov/sites/production/files/2018-11/documents/low\\_flow\\_stats\\_tools\\_handbook.pdf](https://www.epa.gov/sites/production/files/2018-11/documents/low_flow_stats_tools_handbook.pdf)

Methods for Measuring the Acute Toxicity of Effluents and Receiving Waters to Freshwater and Marine Organisms (EPA)

[https://www.epa.gov/sites/production/files/2015-08/documents/acute-freshwater-and-marine-wet-manual\\_2002.pdf](https://www.epa.gov/sites/production/files/2015-08/documents/acute-freshwater-and-marine-wet-manual_2002.pdf)

NetDMR Login

<https://cdxnodengn.epa.gov/net-netdmr/>

NetDMR, MyTDEC Forms, & Electronic Reporting Information

<https://www.tn.gov/environment/program-areas/wr-water-resources/netdmr-and-electronic-reporting.html>

NPDES Compliance Inspection Manual (EPA)

<https://www.epa.gov/sites/production/files/2017-01/documents/npdesinspect.pdf>

NPDES Electronic Reporting Rule

<https://www.federalregister.gov/documents/2015/10/22/2015-24954/national-pollutant-discharge-elimination-system-npdes-electronic-reporting-rule>

Quality System Standard Operating Procedure for Macroinvertebrate Stream Surveys (QSSOP)

[https://www.tn.gov/content/dam/tn/environment/water/documents/DWR-PAS-P-01-Quality\\_System\\_SOP\\_for\\_Macroinvertebrate\\_Stream\\_Surveys-081117.pdf](https://www.tn.gov/content/dam/tn/environment/water/documents/DWR-PAS-P-01-Quality_System_SOP_for_Macroinvertebrate_Stream_Surveys-081117.pdf)

Rules of the TN Department of Environment and Conservation, Chapter 0400-40

<https://publications.tnsosfiles.com/rules/0400/0400-40/0400-40.htm>

Short-term Methods for Estimating the Chronic Toxicity of Effluents and Receiving Waters to Freshwater Organisms (EPA)

[https://www.epa.gov/sites/production/files/2015-08/documents/short-term-chronic-freshwater-wet-manual\\_2002.pdf](https://www.epa.gov/sites/production/files/2015-08/documents/short-term-chronic-freshwater-wet-manual_2002.pdf)

TDEC Water Quality Rules, Reports, and Publications

<https://www.tn.gov/environment/program-areas/wr-water-resources/water-quality/water-quality-reports---publications.html>

Technical Support Document for Water Quality-based Toxics Control (EPA)

<https://www3.epa.gov/npdes/pubs/owm0264.pdf>

Tennessee Nutrient Reduction Framework

[https://www.tn.gov/content/dam/tn/environment/water/tmdl-program/wr-ws\\_tennessee-draft-nutrient-reduction-framework\\_030315.pdf](https://www.tn.gov/content/dam/tn/environment/water/tmdl-program/wr-ws_tennessee-draft-nutrient-reduction-framework_030315.pdf)

Tennessee Plant Optimization Program (TNPOP)

<https://www.tn.gov/environment/program-areas/wr-water-resources/tn-plant-optimization-programs/tnpop.html>

Tennessee Water Resources Data and Map Viewers

<https://www.tn.gov/environment/program-areas/wr-water-resources/water-quality/water-resources-data-map-viewers.html>

USGS StreamStats

[https://www.usgs.gov/mission-areas/water-resources/science/streamstats-streamflow-statistics-and-spatial-analysis-tools?qt-science\\_center\\_objects=0#qt-science\\_center\\_objects](https://www.usgs.gov/mission-areas/water-resources/science/streamstats-streamflow-statistics-and-spatial-analysis-tools?qt-science_center_objects=0#qt-science_center_objects)

USGS Hydrologic Toolbox

<https://pubs.usgs.gov/publication/tm4D3>

## RATIONALE

---

**Town of Cumberland Gap  
Cumberland Gap STP  
NPDES Permit No. TN0060747  
Permit Writer: Priyaa Dhasarathy**

### 1. PERMIT STATUS & PUBLIC PARTICIPATION

<b>Permit Type:</b>	Municipal
<b>Classification:</b>	Minor
<b>Previous Issuance Date:</b>	01-AUG-19
<b>Previous Expiration Date:</b>	31-JUL-24
<b>Previous Effective Date:</b>	01-SEP-19

As provided under Rule 0400-40-05-.06, this permit allows 30 days for public comment on the proposed permit. The 30-day public comment period begins the date this permit is placed on public notice. The public notice document for this permit can be found at the Division's [Water Notices and Hearings website](#) under "Permit Public Notices".

<b>Public Notice Date:</b>	June 25, 2024
<b>Comment Period Ends:</b>	July 25, 2024

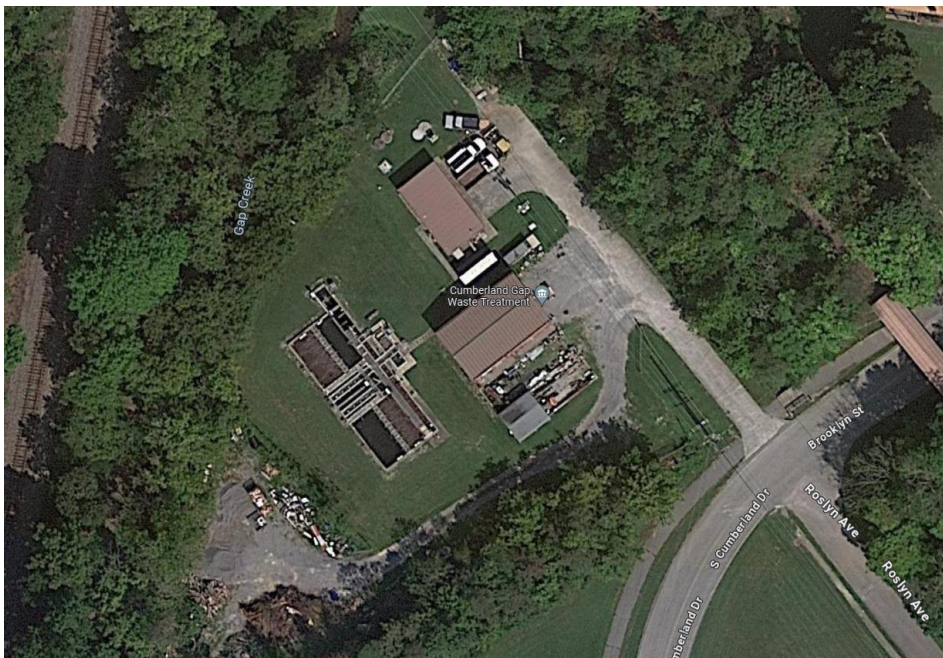
Those wishing to make a formal comment on the proposed permit may submit comments electronically to [Water.Permits@tn.gov](mailto:Water.Permits@tn.gov), or by mail to:

*Division of Water Resources - Water Based Systems Unit  
Davy Crockett Tower, 9<sup>th</sup> Floor  
500 James Robertson Parkway  
Nashville, TN 37243*

The public may also request a public hearing on a proposed permit by submitting such a request in writing during the public comment period specified above. The request should indicate the interest of the party filing it and the reasons why a hearing is warranted. A request for public hearing should be submitted as soon as practicable to the addresses provided above. Questions regarding the draft permit may be directed to 1-888-891-TDEC.

## 2. FACILITY INFORMATION

<b>Permittee Name:</b>	<b>Town of Cumberland Gap</b>
<b>Project Name:</b>	<b>Cumberland Gap STP</b> South Cumberland Drive, Cumberland Gap, Claiborne County, Tennessee
<b>Location:</b>	
<b>Contact:</b>	Honorable Neil Pucciarelli - Mayor (423) 869-3860 Cityhall@townofcumberlandgap.com
<b>Design Flow Rate:</b>	0.1 MGD
<b>Percentage Industrial Flow:</b>	0 %
<b>Certified Operator Grades:</b>	STP: II; CS: I; Date Rated: 06/01/96
<b>Treatment Description:</b>	Extended aeration with clarification, screening and chlorination





### 3. RECEIVING STREAM INFORMATION

<b>Receiving Waterbody:</b>	<b>Gap Creek at mile 8.7</b>			
<b>Watershed Group:</b>	Powell			
<b>Hydrocode:</b>	06010206			
<b>Low Flow:</b>	7Q10 = 0 MGD (0 CFS)			
<b>Low Flow Reference:</b>	USGS StreamStats			
<b>Stream Designated Uses:</b>	<i>Domestic Water Supply</i>	<i>Industrial</i>	<i>Fish &amp; Aquatic Life</i>	<i>Recreation</i>
			<b>X</b>	<b>X</b>
	<i>Livestock &amp; Wildlife</i>	<i>Irrigation</i>	<i>Navigation</i>	<i>Trout</i>
	<b>X</b>	<b>X</b>		

In this permit, no sufficient gage data is available to characterize the receiving stream. Thus, USGS Streamstats was used to delineate the critical low flow at the point of discharge. Streamstats estimates flow conditions based on geological survey data and the size of the drainage area above the point of discharge. When the drainage area to the receiving stream is outside the accepted drainage area range for Streamstats to run the model, a zero critical low flow (7Q10 = 0 MGD) is assumed based on the permit writer's Best Professional Judgment (BPJ). Appendix 3 shows the Streamstats output used for this estimation.

### 4. NEW PERMIT LIMITATIONS AND COMPLIANCE SCHEDULE SUMMARY

- a) The units for *E. coli* have been standardized to number per 100 mL (#/100 mL). Previously, the Division used either MPN/100 mL or CFU/100 mL. The identification of one of these two units indirectly created a requirement for a specific type of testing methodology. By utilizing #/100 mL unit, permittees are provided the flexibility to select the 40 CFR § 136 method that is most suitable for their operations. The limit value (number) will remain the same as the limit units are functionally equivalent. Moreover, the daily maximum limit for *E. coli* has been changed to 410 #/100 mL as a result of updated water quality criteria in Rule 0400-40-03-.03 for the protection of the recreation designated use.

Language throughout the permit has been updated to reflect the eReporting phase 2 requirements in 40 CFR § 127. This includes (but is not limited to) detailing specific data elements that are required to be reported for sanitary sewer overflows, releases and bypasses as well as pretreatment program information.

b) Compliance Schedule Summary

Description of Report to be Submitted	Reference Section in Permit
Monthly Discharge Monitoring Reports	1.3.1.
Monthly Operational Reports	1.3.4.
Bypass and Sanitary sewer overflow and Release Report	1.3.5.1.
Industrial Waste Survey Report within 120 days of the effective permit date	3.2.

c) For comparison, this rationale contains a table depicting the previous permit limits and effluent monitoring requirements in Appendix 1.

**5. PERMIT HISTORY**

**5.1. PREVIOUS PERMIT TERM REVIEW**

A review of the permittee’s Discharge Monitoring Reports (DMRs) from September 30, 2019 to April 30, 2024 revealed that the permittee reported no violations of permit limits for any of the parameters. A summary of data reported on DMRs during the previous permit term is located in Appendix 2.

During the previous permit term, Division personnel from the Knoxville Environmental Field Office performed a Compliance Evaluation Inspection (CEI) of the permittee’s facility. The CEI was performed by Mr. Hassan Sanaat on August 29, 2022, and the permittee was found to be in compliance. The inspection report described increased inflow and infiltration issues in the collection system that need to be addressed and resolved, though these did not result in issues of noncompliance.

**Commented [ST1]:** Only adding this sentence because they appear to imply problems, even though the inspection was “in compliance”

**5.2. PERMIT TIMELINE**

Date	Permit Activity
October 11, 1990	Streeter-Phelps Model performed
April 30, 1996	NPDES Permit issued. <ul style="list-style-type: none"> <li>Effective date: May 1, 1996</li> <li>Expiration date: April 30, 1999</li> </ul>
April 1999	NPDES Permit issued. <ul style="list-style-type: none"> <li>Effective date: May 1, 1999</li> <li>Expiration date: April 30, 2004</li> </ul>
July 30, 2004	NPDES Permit issued. <ul style="list-style-type: none"> <li>Effective date: September 1, 2004</li> </ul>

**Commented [ST2]:** Added these 2 only because I happened to find old files on the H drive.

Would have been fine without them.

	<ul style="list-style-type: none"> <li>• Expiration date: July 30, 2009</li> </ul>
July 31, 2009	NPDES Permit issued. <ul style="list-style-type: none"> <li>• Effective date: September 1, 2009</li> <li>• Expiration date: July 31, 2014</li> </ul>
June 1, 2014	NPDES Permit issued. <ul style="list-style-type: none"> <li>• Effective date: August 1, 2014</li> <li>• Expiration date: July 31, 2019</li> </ul>
December 19, 2016	Request for temporary waiver for NPDES Electronic Reporting submitted to the Division <ul style="list-style-type: none"> <li>• December 21, 2016- Division approval of temporary NPDES electronic reporting waiver</li> </ul>
April 17, 2019	Moratorium for I/I based on EFO communication (now closed)
August 1, 2019	NPDES Permit issued. <ul style="list-style-type: none"> <li>• Effective date: September 1, 2019</li> <li>• Expiration date: July 31, 2024</li> </ul>

*Note: Due to the Department's retention procedures outlined in the Tennessee Department of State Records Disposition Authorization, the history outlined above may not represent a complete and comprehensive summary, but instead reflects the best information available at this time.*

## 6. PROPOSED EFFLUENT LIMITS AND RATIONALE

PARAMETERS	MONTHLY AVERAGE CONCENTRATION (MG/L)	MONTHLY AVERAGE AMOUNT (LB/DAY)	WEEKLY AVERAGE CONCENTRATION (MG/L)	WEEKLY AVERAGE AMOUNT (LB/DAY)	DAILY MAXIMUM CONCENTRATION (MG/L)	DAILY MINIMUM PERCENT REMOVAL	RATIONALE
CBOD <sub>5</sub> (summer)	18	15	26	22	35	40	D.O. protection, Refer to 6.1 below
CBOD <sub>5</sub> (winter)	25	21	35	29	40	40	D.O. protection, Refer to 6.1 below
NH <sub>3</sub> -N (summer)	1.0	0.8	1.5	1.3	2.0	—	D.O. protection, Refer to 6.4 below
NH <sub>3</sub> -N (winter)	1.3	1.1	2.0	1.7	2.6	—	D.O. protection, Refer to 6.4 below
Total Suspended Solids	30	25	40	33	45	40	Rule <a href="#">0400-40-05-.09</a>
Dissolved Oxygen	6.0 (daily minimum) instantaneous	—	—	—	—	—	D.O. protection, Refer to 6.1 below
Total Chlorine Residual	—	0.01	—	—	0.02	—	Refer to 6.5 below
<i>E. coli</i> (#/100mL)	126/100 mL	—	—	—	410/100	—	Rule <a href="#">0400-40-03-.03</a> , Refer to 6.7 below
Total Nitrogen	Report	—	—	—	Report	—	Quarterly, refer to 6.6 below
Total Phosphorus	Report	—	—	—	Report	—	Quarterly, refer to 6.6 below
Settleable Solids (mL/L)	—	—	—	—	1.0	—	Rule <a href="#">0400-40-05-.09</a>
pH (standard units)	6.0 - 9.0	—	—	—	—	—	Rule <a href="#">0400-40-03-.03</a>
Flow (MGD):							
Influent	Report	—	—	—	Report	—	Used to quantify pollutant load
Effluent	Report	—	—	—	Report	—	Used to quantify pollutant load
<b>Monthly Total</b>			Refer to 7 below				
Dry Weather	Sanitary sewer overflows	0	Refer to 7 below				
Wet Weather	Sanitary sewer overflows	0	Refer to 7 below				

Note: Weekly limitations on BOD<sub>5</sub>/CBOD<sub>5</sub> and TSS concentrations are given as required per 40 CFR 133.102(a)(2) or 133.102(a)(4)(2) & 133.102 (b)(2) respectively; daily BOD<sub>5</sub>/CBOD<sub>5</sub> and TSS limitations are authorized by T.C.A. 0400-40-05-.09; monthly and weekly mass loads are limited per 40 CFR 122.45(f) and based on the design flow as per 40 CFR 122.45(b); monthly average percent removal rates for BOD<sub>5</sub>/CBOD<sub>5</sub> and TSS are required per 40 CFR 133.102(a)(3) or 133.102(a)(4)(iii) and 133.102 (b)(3) respectively. A minimum 40% daily removal rate is required as equivalent to a daily mass load limitation.

**6.1. CONVENTIONAL PARAMETERS**

**6.1.1. CBOD<sub>5</sub> and Dissolved Oxygen**

Streeter-Phelps modeling was performed during a previous issuance of this permit at various conditions to determine allowable organic loadings. The monthly average limits for CBOD<sub>5</sub> (18 mg/L summer, 25 mg/L winter), NH<sub>3</sub>-N (1.0 mg/L summer, 1.3 mg/L winter), and D.O. (6.0 mg/L) still apply and are considered sufficient to result in an instream dissolved oxygen concentration that remains above the required minimum of 5.0 mg/L. Modeling results are located in the permit file administrative record.

In addition to CBOD<sub>5</sub>, NH<sub>3</sub>-N undergoes biological oxidation in a receiving stream thereby utilizing in stream oxygen and potentially reducing oxygen levels below water quality standards. Ammonia as N is also a pollutant that exhibits toxicity to fish and other aquatic life. The two effects are analyzed separately, and the Division imposes the most stringent limit in the permit.

**6.1.2. Total Suspended Solids (TSS)**

Total Suspended Solids is a general indicator of the quality of a wastewater and will be limited in this permit. The technology-based TSS limit for conventional treatment plants is provided in Tennessee Rule [0400-40-05-.09\(1\)\(a\)](#).

<b>TSS - Conventional Secondary Treatment Plants</b>			
<i>Monthly Average</i>	<i>Weekly Average</i>	<i>Daily Maximum</i>	<i>Monthly Average</i>
30 mg/L	40 mg/L	45 mg/L	85 % Removal

**6.1.3. Percent Removal**

The treatment facility is required to remove 85 % of the CBOD<sub>5</sub> and TSS that enter the facility on a monthly basis. This is part of the minimum requirement for all municipal treatment facilities contained in Code of Federal Regulations (CFR) 40 § 133.102. The reasons stated by the EPA for these requirements are to achieve these two basic objectives:

- i. To encourage municipalities to correct excessive inflow and infiltration (I/I) problems in their sanitary sewer systems; and
- ii. To help prevent intentional dilution of the influent wastewater as a means of meeting permit limits.

The treatment facility is required to remove 40 % of the CBOD<sub>5</sub> and TSS that enter the facility on a daily basis. This percent removal will be calculated weekly and recorded on the Monthly Operation Report. The number of excursions (days when CBOD<sub>5</sub> and/or TSS removal is less than 40%) will be reported on the Discharge Monitoring Report.

**6.1.4. Settleable Solids**

The settleable solids limit of 1.0 ml/L is a technology-based limit established in Rule [0400-40-05-.09](#).

**6.2. FLOW**

Monitoring of flow quantifies the load of pollutants to the stream. Flow shall be reported in million gallons per day (MGD) and monitored at the time of sample collection.

**6.3. PH**

According to the State of Tennessee Water Quality Standards [Chapter [0400-40-03-.03\(3\) \(b\)](#)], the pH for the protection of Fish and Aquatic Life shall not fluctuate more than 1.0 unit over a period of 24 hours and shall not be outside the following ranges: 6.0 – 9.0 standard units (SU) in wadeable streams and 6.5 – 9.0 SU in larger rivers, lakes, reservoirs, and wetlands. Considering that the receiving stream will provide some buffering capacity, effluent limitation for pH will be retained in a range 6.0 to 9.0. The sample type will be grab.

**6.4. AMMONIA (NH<sub>3</sub>-N)**

To assess ammonia toxicity impacts, the state utilizes Tennessee Rules, Chapter [0400-40-03-.03-3\(3\)\(j\)](#), dated September 11, 2019, to derive allowable instream protection values protective of chronic and acute exposures to a continuous discharge. A mass balance equation with the treatment facility, stream flows, and these allowable values determines the monthly average and daily maximum permit limits.

The temperature used in calculations is determined based on measured ambient instream temperature or is estimated according to Tennessee's Three Grand Divisions as follows: East (winter 15°C, summer 25°C), Middle (winter 17°C, summer 27°C), and West (winter 20°C, summer 30°C). A pH value of 7.5 is used.

Using temperature and pH values, the criterion continuous concentration (CCC) and criterion maximum concentration (CMC) values are calculated using the following equations:

$$CCC = 0.8876 * \left( \frac{0.0278}{1 + 10^{7.688-pH}} + \frac{1.1994}{1 + 10^{pH-7.688}} \right) * (2.126 * 10^{0.028*(20-MAX(T,7))})$$

and

$$CMC = MIN \left\{ \left( \frac{0.275}{1 + 10^{7.204-pH}} + \frac{39.0}{1 + 10^{pH-7.204}} \right), \left( 0.7249 * \left( \frac{0.0114}{1 + 10^{7.204-pH}} + \frac{1.6181}{1 + 10^{pH-7.204}} \right) * (23.12 * 10^{0.036*(20-T)}) \right) \right\}$$

The determined CCC and CMC values are then used in the mass balance equation as follows:

$$CCC = \frac{Q_s C_s + Q_{STP} C_{STP}}{Q_s + Q_{STP}} \quad \text{or} \quad C_{STP} = \frac{CCC(Q_s + Q_{STP}) - (Q_s C_s)}{Q_{STP}}$$

where:

- CCC = Criteria continuous concentration (mg/L)
- Q<sub>s</sub> = 7Q10 flow of receiving stream (MGD)
- Q<sub>STP</sub> = Design flow of STP (MGD)
- C<sub>s</sub> = Assumed/Measured instream NH<sub>3</sub> (mg/L)
- C<sub>STP</sub> = Allowable STP discharge of NH<sub>3</sub> (mg/L)

See below for calculations:

CCC Calculation: Chronic Limits			
<b>Winter</b>		<b>Summer</b>	
Temp (°C)=	15	Temp (°C)=	25
pH=	7.5	pH=	7.5
MAX Expression	15.0000	MAX Expression	25.0000
Winter CCC= <b>1.92</b>		Summer CCC= <b>1.01</b>	
CCC - Continuous Chronic Criterion Allowable instream NH <sub>3</sub> concentration [mg/l]			
$CCC = \frac{(\text{Critical Low Flow [MGD]} * \text{Background Ammonia [mg/L]} + (\text{Design Flow [MGD]} * \text{Effluent Concentration [mg/L]})}{(\text{Critical Low Flow [MGD]} + (\text{Design Flow [MGD]})}$			
where:			
	0	Critical Low Flow [MGD] (7Q10 value)	
	0.0283	Background Ammonia Concentration [mg/L] *	
	0.1	WWTP Design Flow or long-term average flow [MGD]	
Therefore, the Allowable <b>Effluent Concentrations</b> and corresponding <b>Amounts</b> in winter and summer are:			
<b>Winter</b>		<b>Summer</b>	
<b>1.92</b>	Concentration [mg/L]	<b>1.009</b>	Concentration [mg/L]
<b>1.6</b>	Amount [lb/day]	<b>0.8</b>	Amount [lb/day]
* In the absence of measured data, an assumed background concentration of 0.1mg/L is used based on an Agreed Wasteload Allocation Modeling Methodology between the EPA and State of TN			

CMC Calculation: Acute Limits			
<b>Winter</b>		<b>Summer</b>	
Temp (°C)=	15	Temp (°C)=	25
pH=	7.5	pH=	7.5
MAX Expression	15.0000	MAX Expression	25.0000
Winter CMC= <b>13.28</b>		Summer CMC= <b>6.10</b>	
CMC - Continuous Maximum Criterion Allowable instream NH <sub>3</sub> concentration [mg/l]			
$CMC = \frac{(\text{Critical Low Flow [MGD]} * \text{Background Ammonia [mg/L]} + (\text{Design Flow [MGD]} * \text{Effluent Concentration [mg/L]})}{(\text{Critical Low Flow [MGD]} + (\text{Design Flow [MGD]})}$			
where:			
	0	Critical Low Flow [MGD] (7Q10 value)	
	0.0283	Background Ammonia Concentration [mg/L]	
	0.1	WWTP Design Flow or long-term average flow [MGD]	
Therefore, the Allowable <b>Effluent Concentrations</b> and corresponding <b>Amounts</b> in winter and summer are:			
<b>Winter</b>		<b>Summer</b>	
<b>13.28</b>	Concentration [mg/L]	<b>6.102</b>	Concentration [mg/L]
<b>11.1</b>	Amount [lb/day]	<b>5.1</b>	Amount [lb/day]
* In the absence of measured data, an assumed background concentration of 0.1mg/L is used based on an Agreed Wasteload Allocation Modeling Methodology between the EPA and State of TN			

The calculated acute and chronic toxicity values above are compared to ammonia limits previously imposed to prevent ammonia toxicity or calculated to protect ambient dissolved oxygen levels. The permit imposes the most stringent values in the analysis. The analysis compares the calculated chronic ammonia value (CCC) with a monthly average limit previously imposed to protect dissolved oxygen or to prevent toxicity. The analysis compares the calculated acute ammonia value



(CMC) with the previously imposed daily maximum value to protect dissolved oxygen or to prevent toxicity. Generally, water quality models have predicted the monthly average ammonia limit to protect dissolved oxygen. The Division has historically developed a companion daily maximum value to protect dissolved oxygen by multiplying the monthly average limit by two. Empirical data supports the factor of two developed in consideration of the natural variation in biological pollutant removal and the design basis for treatment unit sizing.

Because the NH<sub>3</sub>-N concentration limits calculated to protect dissolved oxygen are more restrictive than the toxicity limits calculated above, the monthly average limits for NH<sub>3</sub>-N (1.0 mg/L summer, 1.3 mg/L winter) are applied to the permit.

#### 6.5. CHLORINATION

The total residual chlorine (TRC) limit is derived using the mass balance formula and the EPA acute instream protection value of 0.019 mg/L for fish and aquatic life. Applying this formula yields the following calculation for the TRC daily maximum limit:

$$\frac{0.019 (Q_d + Q_s)}{Q_d} = \text{Limit (mg/L)} = \frac{0.019(.1 + 0)}{.1} = 0.019 \text{ mg/L} \approx 0.02 \text{ mg/L}$$

Where:

0.019 mg/L	=	acute instream protection value
0	=	Q <sub>s</sub> - 7Q10 flow of receiving stream (MGD)
0.1	=	Q <sub>d</sub> - design flow of STP (MGD)

Similarly, the chronic instream protection value of 0.011 mg/L for fish and aquatic life is applied to the mass balance formula to determine the monthly average limit for TRC. Previous permits do not contain rationale for omitting this limit and may have utilized the belief that chlorine's reactivity with other compounds will ensure it does not remain in solution long enough to result in chronic exposure to fish and aquatic life. The best way to reflect that chronic exposure to harmful levels of chlorine is not occurring is reporting successful operation of the de-chlorination technology in compliance with the monthly average limit. This added limit does not entail additional sampling but rather calculation of a monthly average value based on the sampling results in consideration of the method detection limit of the test method.

$$\frac{0.011 (Q_d + Q_s)}{Q_d} = \text{Limit (mg/L)} = \frac{0.011(.1 + 0)}{.1} = 0.011 \text{ mg/L} \approx 0.01 \text{ mg/L}$$

Considering the reported TRC will be that of the effluent, an exceedance of the above-mentioned monthly average of 0.011 mg/L water quality criteria is not necessarily a permit violation. The 0.011 mg/L value applies to the receiving stream, not the effluent. Therefore, if the TRC monthly average of the effluent exceeds 0.011 mg/L, the permittee should note in the comments section of NetDMR that this is the TRC of the effluent and not of the receiving stream. A TRC check in the receiving stream below the discharge point may be performed in order to prove a facility's compliance with the Tennessee Water Quality Standards and should also be noted in the comments section of NetDMR.

#### **6.6. TOTAL NITROGEN AND TOTAL PHOSPHORUS**

Nutrients are naturally occurring and essential components of healthy aquatic systems. Excessive amounts of nutrients, however, can impact water quality. The enrichment of a waterbody with nutrients, called eutrophication, can result in dense, rapidly multiplying growths, or blooms, of algal species and other nuisance aquatic plants. These have potential for negatively impacting the habitat for fish and aquatic life and degrading the water quality for drinking water supply and recreation uses. These impacts can present both locally from an individual activity and much further downstream from the cumulative impact of multiple activities. The Division has therefore developed and begun to implement a strategy to accomplish long-term nutrient reduction in Tennessee waters. The strategy, referred to as the [Tennessee Nutrient Reduction Framework](#) (NRF), contains proposed rationale and the methodology for implementing the strategy within a watershed area. Consequently, the Framework considers impacts from both point and non-point sources of nutrients and recommends possible reduction goals for both point and non-point sources. The NRF approach to nutrient reduction is intended to utilize an adaptive management approach in consideration of the facts presenting within a watershed and reevaluation of the effectiveness of progress being made. Regular reassessments of goals and action plans will be conducted by reviewing monitoring data, modeling results and other measures of success. As additional data becomes available (such as WWTP effluent characterization and instream water quality data), model results can be re-evaluated.

Therefore, for purposes of implementing this strategy, the Division is imposing a minimum of quarterly effluent characterization for total nitrogen and total phosphorus on all discharges of treated domestic wastewater. These values will be used to reevaluate the nutrient loads from discharges within a watershed over time for comparison with those loads from non-point sources.

In coordination with the NRF and in recognition that meeting nutrient limits may require changes in plant operations, the Division has created the Tennessee Plant Optimization Program (TNPOP), which is a free program created to provide technical assistance and other resources to participating wastewater treatment plants. TNPOP can help wastewater treatment plants optimize energy use and nutrient removal, which can result in cost and energy savings. Interested facilities should visit the Division's [TNPOP website](#) for a program description, frequently asked questions, and information on how to apply.

#### **6.7. E. COLI**

Disinfection of wastewater is required to protect the receiving stream from pathogenic microorganisms. *E. coli* is used as an indicator organism as a measure of the bacteriological health of a receiving stream and the effectiveness of disinfection. Both the geometric mean and daily maximum are limited for *E. coli* in accordance with Rule [0400-40-03-03](#). While the Rule retains the geometric mean for *E. coli* of 126 cfu/100 mL, the maximum has been changed. Formerly, the *E. coli* daily maximum limit of 487 colony forming units (cfu) per 100 mL applied to lakes and exceptional Tennessee waters, while a daily maximum limit of 941 cfu/100 mL applied to all other recreational waters.

In November 2022, the Tennessee Board of Water Quality, Oil, and Gas adopted a new maximum criterion to align with U.S. Environmental Protection Agency national recommended criteria. That criterion will apply to Tennessee waters to protect the recreation use designation effective March 17, 2024. EPA established a statistical relationship between number of colony forming units and percent of time when such numbers were observed in any 30-day period. The new criterion of 410 cfu/100 mL corresponds to no exceedances in more than 10% of samples during any 30-day interval for all receiving waters.

Tennessee has historically applied water quality standards for pathogens at the outfall of POTWs so that a discharger can demonstrate that it is not contributing to any violation of the criterion in the receiving waterbody. The Division therefore proposes to apply the new criterion as a daily maximum of 410 cfu/100 mL in accordance with EPA guidance and retains the monthly geometric mean for *E. coli* of 126 cfu/100 mL.

The units for *E. coli* have been standardized to #/100 mL, which is functionally equivalent to colony forming units.

## **6.8. BIOMONITORING**

The Division evaluates all dischargers for reasonable potential to exceed the narrative water quality criterion “no toxics in toxic amounts”. The Division has determined that for municipal facilities with stream dilutions of less than 500 to 1, any of the following conditions may demonstrate reasonable potential to exceed this criterion:

- i. Toxicity is suspected or demonstrated;
- ii. A pretreatment program is required; or
- iii. The design capacity of the facility is greater than 1.0 MGD.

This facility has a design capacity of less than 1.0 MGD and does not have a pretreatment program. Therefore, biomonitoring is not required in this permit.

## **7. COLLECTION SYSTEMS**

### **7.1. COLLECTION SYSTEM CERTIFIED OPERATOR**

The collection system shall be operated under the supervision of a Grade I certified collection system operator in accordance with the Water Environmental Health Act of 1984.

### **7.2. COLLECTION SYSTEM OPERATION**

For the purposes of demonstrating proper operation of the collection, transmission and treatment system, the permit treats releases separately from sanitary sewer overflows and bypass. State regulations at [0400-40-05-.07\(2\)](#) establish “standard conditions”. These standard conditions include [0400-40-05-.07\(2\)\(n\)](#) that sets forth specific language prohibiting sanitary sewer overflows (defined in the regulations as a “discharge”) and standard conditions in [0400-40-05-.07\(2\)\(l\)](#) and (m) pertaining to bypass. While the regulations prohibit sanitary sewer overflow (*i.e.*, discharges that reach or are likely to reach receiving waters) it does not prohibit “releases” that do not reach or are not likely to reach receiving waters. However, releases that do not reach receiving waters may be indicative of other problems, such as improper operation and maintenance of the sewer system. Whether another violation occurs or whether, for example, there is an unavoidable accident (see, e.g., § 69-3-114(a)), will involve case-specific evaluations. Regardless, the permit assures, without waiving rights to pursue other violations associated with a release, as applicable, that the permittee would, at a minimum be reporting and responding to releases. Any release potentially warrants permittee mitigation of human health risks via direct or indirect contact

and may demonstrate a hydraulic problem in the system that warrants permittee consideration as part of proper operation and maintenance of the system.

Proper operation and maintenance of the collection system may include, but is not limited to:

1. A comprehensive collection system map showing all drainage areas, manholes, pump stations (number and size of pumps), flow meters, chronic sanitary sewer overflow and release locations, miles of collection system, material and diameter of construction, and other relevant system elements.
2. Rainfall data at location(s) using method(s) representative of precipitation within the collection system area.
3. Flow meters at locations in the collection system that would enable drainage area analysis and prioritization based on the amount of inflow and infiltration (I/I) observed.
4. A collection system hydraulic model that predicts I/I problems in response to rainfall events and the effects of new conditions.

When determining if a location experiences chronic sanitary sewer overflows or releases, the term "event(s)" includes dry weather overflows, wet weather overflows, dry weather releases and wet weather releases.

## **8. OTHER PERMIT REQUIREMENTS AND CONDITIONS**

### **8.1. CERTIFIED WASTEWATER TREATMENT OPERATOR**

The waste treatment facilities shall be operated under the supervision of a Grade II certified wastewater treatment operator in accordance with the Water Environmental Health Act of 1984. Operator grades are under jurisdiction of the Water and Wastewater Operators Certification Board. This NPDES permit is under jurisdiction of the Tennessee Board of Water Quality, Oil and Gas. Operator grades are rated and recommended by the Division of Water Resources pursuant to Rule [0400-49-01](#) and are included in this fact sheet for reference. The grades are intentionally not specified in the permit so that the operation certification board can authorize changes in grade without conflicting with this permit.

### **8.2. PRETREATMENT PROGRAM**

The Town of Cumberland Gap has received an exemption from development of a pretreatment program due to the lack of any significant industrial users.

Narrative conditions will be included for conducting and submitting an industrial waste survey. The drafted permit will include a due date for these reports based

on the anticipated effective date. If permit issuance is delayed, these dates will be adjusted accordingly.

### **8.3. BIOSOLIDS MANAGEMENT PRACTICES**

The Clean Water Act (CWA) requires that any NPDES permit issued to a publicly owned treatment works or any other treatment works treating domestic sewage shall comply with 40 CFR § 503, the federal regulation governing the use and disposal of sewage sludge. It is important to note that “biosolids” are sewage sludge that have been treated to a level so that they can be land applied.

The language in **section 3.3.** of the permit, relative to biosolids management, a CWA requirement, allows the “permitting authority” under 40 CFR § 503.9(p) to be able to enforce the provisions of § 503. The “permitting authority” relative to Part 503 is either a state that has been delegated biosolids management authority or the applicable EPA Region; for Tennessee it is EPA Region 4.

Tennessee regulates the land application of non-exceptional quality biosolids under state rules, Chapter [0400-40-15](#). The state rules became effective on June 30, 2013. Under these state rules, all facilities that land apply non-exceptional quality biosolids must obtain a biosolids permit from the division. The land application of non-exceptional quality biosolids under state rules is regulated through either a general permit or by an individual permit. Questions about the Division’s biosolids regulations and permitting program should be directed to the State Biosolids Coordinator at:

*Division of Water Resources  
State Biosolids Coordinator  
Davy Crockett Tower, 9<sup>th</sup> Floor  
500 James Robertson Parkway  
Nashville, TN 37243  
615-532-0625*

### **8.4. PERMIT TERM**

In order to meet the target reissuance date for the Powell watershed and following the directives for the Watershed Management Program initiated in January 1996, the permit will be issued to expire in 2029.

### **8.5. ELECTRONIC REPORTING**

The [NPDES Electronic Reporting Rule \(eRule\)](#), which became effective on December 21, 2016, replaces most paper-based reporting requirements with electronic reporting requirements. NetDMR allows NPDES permittees to submit

DMRs electronically to EPA through a secure internet application and has been approved by Tennessee as the official electronic reporting tool for DMRs. The permittee has been reporting electronically via NetDMR since March 13, 2018.

Monitoring results shall be recorded monthly and submitted monthly using Discharge Monitoring Reports (DMRs) based on the effluent limits in **section 1.1** of the permit. DMRs and DMR attachments, including laboratory data and sanitary sewer overflow reports, shall be submitted electronically in [NetDMR](#) or other electronic reporting tool approved by the State, no later than the 15th of the month following the end of the monitoring period. All NPDES program reports must be signed and certified by a responsible official or a duly authorized representative, as defined in 40 CFR § 122.22.

According to 40 CFR § 127.15, states have the flexibility to grant temporary or episodic waivers from electronic reporting to NPDES permittees who are unable to meet the electronic reporting requirements. To obtain an electronic reporting waiver, an [electronic reporting waiver request](#) must be submitted by email to [DWRwater.compliance@tn.gov](mailto:DWRwater.compliance@tn.gov) or by mail to the following address:

*Division of Water Resources  
Compliance and Enforcement Unit – NetDMR Waivers  
Davy Crockett Tower, 9<sup>th</sup> Floor  
500 James Robertson Parkway  
Nashville, TN 37243*

For contact and training information about NetDMR electronic reporting, visit the Division's website [here](#).

The permit language has been modified to accommodate the implementation of the MyTDEC Forms electronic reporting tool. For more information, visit EPA's website on [eReporting requirements](#).

#### **8.6. ANTIDegradation STATEMENT / WATER QUALITY STATUS**

Tennessee's Antidegradation Statement is found in the Rules of the Tennessee Department of Environment and Conservation, Chapter [0400-40-03-.06](#). It is the purpose of Tennessee's standards to fully protect existing uses of all surface waters as established under the Act.

Stream determinations for this permit action are associated with the waterbody segment identified by the Division as segment ID# TN06010206006\_0200.

The Division has made a determination of the receiving waters associated with the subject discharge(s) and has found the stream to be an exceptional Tennessee water. No permanent degradation of water quality above the level of *de minimis* will be allowed unless the applicant demonstrates to the Division that the degradation is for necessary economic or social development and will not interfere with or become injurious to any existing uses. The specific requirements for this demonstration are described in the Rules of the Tennessee Department of Environment and Conservation, Chapter 0400-40-03-.06(4).

Total Maximum Daily Loads (TMDLs) have been developed and approved for this waterbody segment on the following parameters and dates:

<u>Parameter:</u>	<u>TMDL Approval Date:</u>
<i>E. Coli</i>	October 15, 2008

The proposed terms and conditions of this permit comply with the wasteload allocations of these TMDLs.

On January 16, 2024, the permittee submitted an analysis of reasonable alternatives to the continued treated wastewater discharge into the Gap Creek at mile 8.7, as required for Exceptional Tennessee Waters by Rule 0400-40-03-.06(c).

The Town of Cumberland Gap has looked at different water reuse application for their WWTP discharge, such as land irrigation, but the town has chosen to continue with the current method of discharge of the treated wastewater as the other alternatives are not feasible with the town's financial constraints.

The Division agrees with the permittee's alternatives analysis.



### APPENDIX 1 –PREVIOUS PERMIT LIMITS

PARAMETERS	MONTHLY AVERAGE CONCENTRATION (MG/L)	MONTHLY AVERAGE AMOUNT (LB/DAY)	WEEKLY AVERAGE CONCENTRATION (MG/L)	WEEKLY AVERAGE AMOUNT (LB/DAY)	DAILY MAXIMUM CONCENTRATION (MG/L)	DAILY MINIMUM PERCENT REMOVAL	MEASUREMENT FREQUENCY
CBOD <sub>5</sub> (May 1- Oct. 31)	18	15	26	22	35		1/week
CBOD <sub>5</sub> (Nov. 1- April 30)	25	21	35	29	40		1/week
NH <sub>3</sub> -N (May 1- Oct. 31)	1.0	0.8	1.5	1.3	2.0	—	1/week
NH <sub>3</sub> -N (Nov. 1- April 30)	1.3	1.1	2.0	1.7	2.6	—	1/week
Total Suspended Solids	30	25	40	33	45		3/week
Dissolved Oxygen (mg/L)	6.0 (daily minimum) instantaneous	—	—	—	—	—	5/week
Total Chlorine Residual (mg/L)	—	—	—	—	0.02 (daily maximum)	—	5/week
<i>E. coli</i> (colonies/100ml)	126/100 ml	—	—	—	487/100 ml	—	1/week
Settleable Solids (ml/l)		—	—	—	1.0 (daily maximum)	—	5/week
pH (standard units)	6.0- 9.0	—	—	—	—	—	5/week
Flow (MGD):							
Influent	Report	—	—	—	Report	—	7/week
Effluent	Report	—	—	—	Report	—	7/week
Sanitary Sewer Overflows, Total Occurrences					Report		continuous
Dry Weather Overflows, Total Occurrences					Report		continuous
Bypass of Treatment, Total Occurrences					Report		continuous

## APPENDIX 2 – DMR SUMMARY

	CBOD5, Effluent					CBOD5, Influent		CBOD, Percent Removal		Bypass of Treatment Facility		Total Residual Chlorine
	Monthly avg. (lb/d)	Weekly avg. (lb/d)	Monthly avg. (mg/L)	Weekly avg. (mg/L)	Daily max. (mg/L)	Weekly avg. (mg/L)	Daily max. (mg/L)	Monthly avg. (%)	Weekly avg. (%)	Monthly or total (occurrences)	Monthly avg. (gal/mo)	Daily max. (mg/L)
04/30/2024	2.42	2.77	5.22	6.26	6.26	153.63	175	95.9	96.6	0	0	0.016
03/31/2024	3.54	5.46	5.89	6.18	6.18	153.13	157.25	96	96.2	0	0	0.016
02/29/2024	4.51	5.95	6.72	7.13	7.13	164.38	180	95.3	95.9	0	0	0.016
01/31/2024	5.73	13.81	6.24	8	8	168.05	179.5	94.6	96.3	0	0	0.018
12/31/2023	2.18	2.77	6.34	7.2	7.2	162.06	176.5	95.4	96.1	0	0	0.017
11/30/2023	1.76	2.31	5.91	6.66	6.66	149.42	156	95.3	96	0	0	0.017
10/31/2023	1.27	1.9	4.4	6.5	6.5	142.31	159	95.9	96.9	0	0	0.017
09/30/2023	1.74	1.88	5.13	6.09	6.09	136.63	151	95.8	96.2	0	0	0.017
08/31/2023	1.6	2.76	4.04	5.7	5.7	145.55	152.5	96.1	97.2	0	0	0.018
07/31/2023	0.68	1.04	2.67	4.02	4.02	135.94	142.25	97.2	98	0	0	0.018
06/30/2023	0.79	1.17	3.24	4.66	4.66	142.45	185.5	96.2	97.7	0	0	0.018
05/31/2023	1.26	1.45	4.32	5.04	5.04	151.69	153.5	96.6	97.2	0	0	0.017
04/30/2023	2.39	2.8	5.18	5.6	5.6	167.06	191	96.5	96.9	0	0	0.018
03/31/2023	5.26	8.6	6.15	6.62	6.62	163.6	179.5	95.6	96.2	0	0	0.018
02/28/2023	7.85	17.43	6.17	6.68	6.68	163.38	183	95.9	96.2	0	0	0.018
01/31/2023	6.53	8.9	6.33	6.46	6.46	159	176.5	95.8	96	0	0	0.018
12/31/2022	3.94	7.7	6.14	6.5	6.5	162.25	179	95.6	96.2	0	0	0.018
11/30/2022	1.33	2.29	4.1	6.1	6.1	191.13	228.5	96.6	97.9	0	0	0.018
10/31/2022	0.85	1.69	2.48	4.41	4.41	181.94	193.5	97.6	98.6	0	0	0.018
09/30/2022	0.31	0.64	0.88	1.56	1.56	166.3	191.5	98.7	99.5	0	0	0.019
08/31/2022	2.71	6.05	4.33	7.72	7.72	181.06	215.5	95	97.6	0	0	0.019
07/31/2022	4.13	6.92	6.6	7.18	7.18	135.13	151.5	93.9	95.1	0	0	0.018
06/30/2022	1.46	1.81	6.17	7	7	155.05	179.5	95.3	96	0	0	0.017
05/31/2022	2.04	2.46	5.94	7.3	7.3	142.75	150	94.2	95.8	0	0	0.018
04/30/2022	2.12	3.07	4.53	5.18	5.18	161.63	179.5	96.9	97.2	0	0	0.017
03/31/2022	5.24	12.2	6.91	9.2	9.2	131.5	156	91	94.7	0	0	0.018
02/28/2022	7.8	19.3	8.14	9.6	9.6	139.75	152.5	90.8	94.2	0	0	0.018
01/31/2022	4.99	8.19	5.33	6.06	6.06	150.13	158.75	96	96.4	0	0	0.018



	E. coli, Effluent Gross		Flow, Effluent		Flow, Influent		Nitrogen, ammonia, Effluent					Dissolved Oxygen, Effluent
	Weekly avg. (MPN/100 mL)	Daily max. (MPN/100 mL)	Monthly avg. (MGD)	Daily max (MGD)	Monthly avg. (MGD)	Daily max (MGD)	Monthly avg. (lb/d)	Weekly avg. (lb/d)	Monthly average (mg/L)	Weekly average (mg/L)	Daily max. (mg/L)	Monthly average (mg/L)
04/30/2024	19	64	0.063	0.153	0.072	0.115	0.034	0.049	0.075	0.094	0.094	8.94
03/31/2024	39	68	0.076	0.12	0.084	0.17	0.035	0.043	0.061	0.091	0.091	9.08
02/29/2024	52	64	0.099	0.211	0.109	0.212	0.089	0.177	0.121	0.174	0.174	9.16
01/31/2024	48	85	0.111	0.322	0.117	0.316	0.058	0.105	0.087	0.092	0.092	9
12/31/2023	28	48	0.059	0.198	0.066	0.17	0.033	0.04	0.098	0.101	0.101	9.09
11/30/2023	24	80	0.038	0.118	0.049	0.12	0.018	0.026	0.063	0.091	0.091	8.28
10/31/2023	16	20	0.035	0.044	0.046	0.057	0.011	0.018	0.04	0.061	0.061	8.02
09/30/2023	66	100	0.05	0.18	0.06	0.184	0.025	0.034	0.072	0.091	0.091	7.94
08/31/2023	51	90	0.051	0.12	0.06	0.122	0.027	0.057	0.065	0.094	0.094	7.52
07/31/2023	11	84	0.034	0.053	0.041	0.057	0.019	0.037	0.076	0.164	0.164	7.59
06/30/2023	9	84	0.034	0.101	0.042	0.112	0.026	0.043	0.111	0.2	0.2	6.8
05/31/2023	18	40	0.037	0.051	0.047	0.061	0.016	0.019	0.057	0.066	0.066	8.27
04/30/2023	35	48	0.064	0.161	0.074	0.175	0.024	0.035	0.052	0.067	0.067	8.26
03/31/2023	39	64	0.09	0.168	0.099	0.164	0.086	0.137	0.106	0.141	0.141	8.33
02/28/2023	43	60	0.118	0.335	0.121	0.357	0.136	0.302	0.11	0.124	0.124	8.16
01/31/2023	55	60	0.13	0.272	0.125	0.201	0.079	0.133	0.074	0.092	0.092	8.28
12/31/2022	34	48	0.082	0.288	0.089	0.266	0.034	0.062	0.055	0.091	0.091	8.33
11/30/2022	10	18	0.05	0.122	0.06	0.127	0.014	0.018	0.044	0.061	0.061	8.28
10/31/2022	12	42	0.04	0.052	0.052	0.068	0.017	0.025	0.052	0.071	0.071	8.4
09/30/2022	8	80	0.053	0.173	0.062	0.167	0.018	0.029	0.054	0.105	0.105	7.86
08/31/2022	29	48	0.059	0.218	0.066	0.199	0.054	0.071	0.1	0.113	0.113	7.49
07/31/2022	78	102	0.085	0.308	0.088	0.304	0.113	0.213	0.195	0.281	0.281	8.55
06/30/2022	32	36	0.027	0.043	0.035	0.046	0.026	0.045	0.124	0.182	0.182	8.49
05/31/2022	24	28	0.049	0.086	0.058	0.11	0.021	0.029	0.06	0.075	0.075	8.75
04/30/2022	33	42	0.054	0.111	0.063	0.117	0.043	0.082	0.087	0.138	0.138	8.8
03/31/2022	58	88	0.075	0.159	0.085	0.159	0.08	0.145	0.117	0.151	0.151	8.61
02/28/2022	26	54	0.119	0.302	0.117	0.275	0.128	0.436	0.097	0.217	0.217	8.33
01/31/2022	28	46	0.092	0.162	0.101	0.167	0.138	0.295	0.14	0.218	0.218	8.45



	pH, Effluent		Release [Sewer], Dry Weather		Release [Sewer], Wet Weather		Solids, settleable, Effluent Daily max. (mL/L)	TSS, Percent Removal		
	Monthly average (SU)	Daily max. (SU)	Monthly avg. (occur/mo)	Monthly average. (gal/mo)	Monthly or total (occur/mo)	Monthly average or min. (gal/mo)		Monthly or total (%)	Monthly average min. (%)	Daily max (%)
04/30/2024	7.72	7.89	0	0	0	0	0.1		95.7	97.1
03/31/2024	7.73	7.95	0	0	0	0	0.1		96.7	97
02/29/2024	7.72	7.92	0	0	0	0	0.1		95.1	95.8
01/31/2024	7.62	8	0	0	0	0	0.2		82.5	95.2
12/31/2023	7.9	8.06	0	0	0	0	0.1		96.4	96.7
11/30/2023	7.91	8.05	0	0	0	0	0.1		95.8	97.3
10/31/2023	7.9	8	0	0	0	0	0.1		97.2	97.7
09/30/2023	7.79	8	0	0	0	0	0.1		96.5	96.9
08/31/2023	7.81	8.04	0	0	0	0	0.1		96.5	97.3
07/31/2023	7.78	8.08	0	0	0	0	0.1		97.5	98
06/30/2023	7.74	8.13	0	0	0	0	0.1		97.7	98.4
05/31/2023	7.91	8.06	0	0	0	0	0.1		97.6	97.8
04/30/2023	7.71	8.07	0	0	0	0	0.1		97.4	97.5
03/31/2023	7.64	8.09	0	0	0	0	0.1		95	96.1
02/28/2023	7.48	8.09	0	0	0	0	0.2		94.7	95.9
01/31/2023	7.48	8.08	0	0	0	0	0.1		95.7	96.5
12/31/2022	7.91	8.1	0	0	0	0	0.1		96.1	96.5
11/30/2022	7.93	8.1	0	0	0	0	0.1		97.2	97.7
10/31/2022	7.98	8.09	0	0	0	0	0.1		95.7	96.9
09/30/2022	7.97	8.11	0	0	0	0	0.1		95.2	97.1
08/31/2022	7.5	8.02	0	0	0	0	0.1		95.2	96.9
07/31/2022	7.5	7.9	0	0	0	0	0.1		96	97.2
06/30/2022	7.5	7.64	0	0	0	0	0.1		96.3	97.1
05/31/2022	7.5	7.64	0	0	0	0	0.1		96.6	97
04/30/2022	7.39	7.6	0	0	0	0	0.1		96.4	96.9
03/31/2022	7.5	8.1	0	0	0	0	0.2		92.7	95.2
02/28/2022	7.75	7.88	0	0	0	0	0.2		92	95.9
01/31/2022	7.82	7.87	0	0	0	0	0.1		96.4	97.1



	TSS, Effluent					TSS, Influent		SSO, Dry Weather		SSO, Wet Weather	
	Monthly or total (lb/d)	Weekly or daily (lb/d)	Monthly average or min. (mg/L)	Weekly average or geo. mean (mg/L)	Daily max. (mg/L)	Weekly average or geo. mean (mg/L)	Daily max. (mg/L)	Monthly or total (occur/mo)	Monthly average or min. (gal/mo)	Monthly or total (occur/mo)	Monthly average or min. (gal/mo)
04/30/2024	2.13	3.1	4	6	6	140	184	0	0	0	0
03/31/2024	2.94	5	4.75	5	5	160	184	0	0	0	0
02/29/2024	5.02	8.14	7	8	8	167	176	0	0	0	0
01/31/2024	4.71	10.36	5.8	7	7	121.6	160	0	0	0	0
12/31/2023	1.77	2	5.25	6	6	158	168	0	0	0	0
11/30/2023	1.3	2.45	4.2	7	7	155.2	168	0	0	0	0
10/31/2023	1.08	1.38	3.75	5	5	166	176	0	0	0	0
09/30/2023	1.5	1.6	4.5	5	5	147	168	0	0	0	0
08/31/2023	1.49	2.44	3.8	5	5	143.2	148	0	0	0	0
07/31/2023	0.63	0.73	2.5	3	3	126	136	0	0	0	0
06/30/2023	0.57	0.75	2.4	3	3	149.6	184	0	0	0	0
05/31/2023	1.09	1.4	3.75	4	4	160	172	0	0	0	0
04/30/2023	1.83	2.1	4	4	4	158	160	0	0	0	0
03/31/2023	4.43	6	5.4	6	6	138.4	156	0	0	0	0
02/28/2023	6.63	13.97	5.5	7	7	134	156	0	0	0	0
01/31/2023	5.67	7.3	5.5	7	7	157	164	0	0	0	0
12/31/2022	3.23	5.92	5	5	5	142.4	160	0	0	0	0
11/30/2022	1.21	1.5	3.75	4	4	160	172	0	0	0	0
10/31/2022	1.42	1.53	4.25	5	5	136	160	0	0	0	0
09/30/2022	1.29	2.45	3.6	6	6	125.6	144	0	0	0	0
08/31/2022	2.57	3.92	4.5	5	5	145	164	0	0	0	0
07/31/2022	2.63	4.54	4	5	5	143	168	0	0	0	0
06/30/2022	1.01	1.17	4.6	6	6	159.2	172	0	0	0	0
05/31/2022	1.57	2.21	4.5	5	5	150	160	0	0	0	0
04/30/2022	2	2.96	4.25	5	5	136	140	0	0	0	0
03/31/2022	4.11	9.28	5.6	7	7	117.6	144	0	0	0	0
02/28/2022	5.78	16.08	5.5	8	8	134	152	0	0	0	0
01/31/2022	4.19	6.76	4.5	5	5	156	164	0	0	0	0

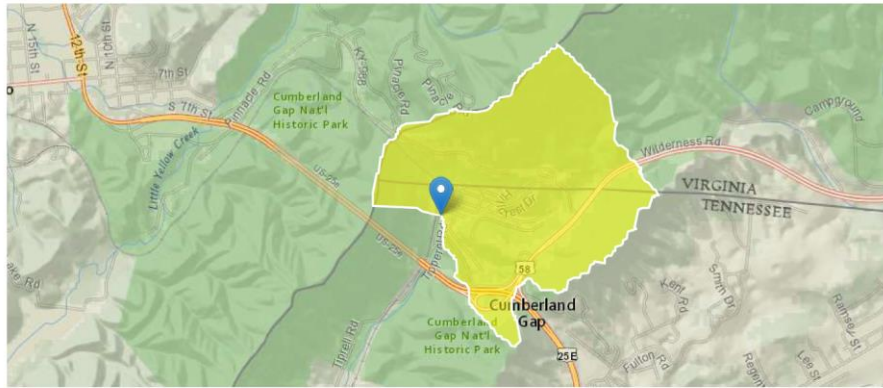




## APPENDIX 3 – RECEIVING STREAM LOW FLOW DETERMINATION

### StreamStats Report

Region ID: TN  
 Workspace ID: TN20240529160439266000  
 Clicked Point (Latitude, Longitude): 36.59837, -83.66969  
 Time: 2024-05-29 11:04:59 -0500



#### Basin Characteristics

Parameter Code	Parameter Description	Value	Unit
CLIMFAC2YR	Two-year climate factor from Lichy and Karlinger (1990)	2.182	dimensionless
DRNAREA	Area that drains to a point on a stream	1.06	square miles
PERMGTE2IN	Percent of area underlain by soils with permeability greater than or equal to 2 inches per hour	23.783	percent
RECESS	Number of days required for streamflow to recede one order of magnitude when hydrograph is plotted on logarithmic scale	65	days per log cycle
SOILPERM	Average Soil Permeability	1.163	inches per hour

#### Low-Flow Statistics

Low-Flow Statistics Parameters [Low Flow Central and East Regions 2009 5159]

Parameter Code	Parameter Name	Value	Units	Min Limit	Max Limit
DRNAREA	Drainage Area	1.06	square miles	1.3	14441
RECESS	Recession Index	65	days per log cycle	32	175
CLIMFAC2YR	Tennessee Climate Factor 2 Year	2.182	dimensionless	2.056	2.46
SOILPERM	Average Soil Permeability	1.163	inches per hour	0.45	9.72

Parameter Code	Parameter Name	Value	Units	Min Limit	Max Limit
PERMGTE2IN	Percent permeability gte 2 in per hr	23.783	percent	2	100

Low-Flow Statistics Disclaimers [Low Flow Central and East Regions 2009 5159]

One or more of the parameters is outside the suggested range. Estimates were extrapolated with unknown errors.

Low-Flow Statistics Flow Report [Low Flow Central and East Regions 2009 5159]

Statistic	Value	Unit
7 Day 10 Year Low Flow	0.0461	ft <sup>3</sup> /s
30 Day 5 Year Low Flow	0.0787	ft <sup>3</sup> /s

*Low-Flow Statistics Citations*

**Law, G.S., Tasker, G.D., and Ladd, D.E., 2009, Streamflow-characteristic estimation methods for unregulated streams of Tennessee: U.S. Geological Survey Scientific Investigations Report 2009-5159, 212 p., 1 pl. (<http://pubs.usgs.gov/sir/2009/5159/>)**

USGS Data Disclaimer: Unless otherwise stated, all data, metadata and related materials are considered to satisfy the quality standards relative to the purpose for which the data were collected. Although these data and associated metadata have been reviewed for accuracy and completeness and approved for release by the U.S. Geological Survey (USGS), no warranty expressed or implied is made regarding the display or utility of the data for other purposes, nor on all computer systems, nor shall the act of distribution constitute any such warranty.