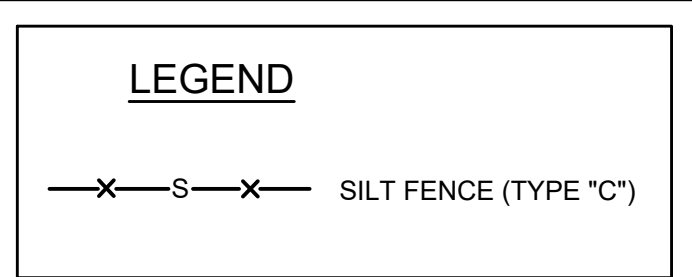
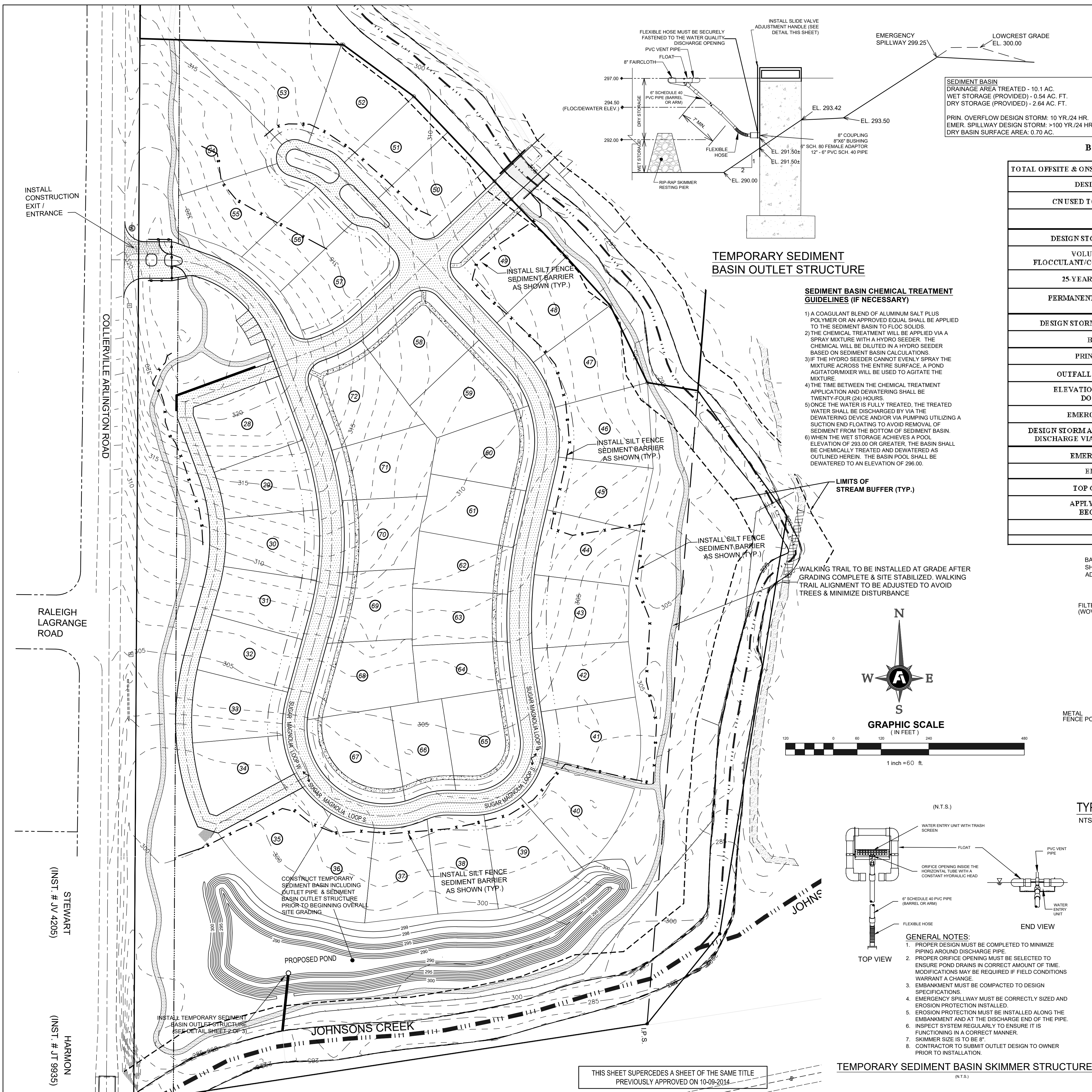


Copyright 2022, Fisher & Arnold, Inc. All rights reserved.
 Filename: 2_CREEKSID0\0003\00 Subdivision Plans\PHB_EF_01.dwg
 Layout Name: 1
 Plotted: Thursday, January 13, 2023 - 2:14 pm

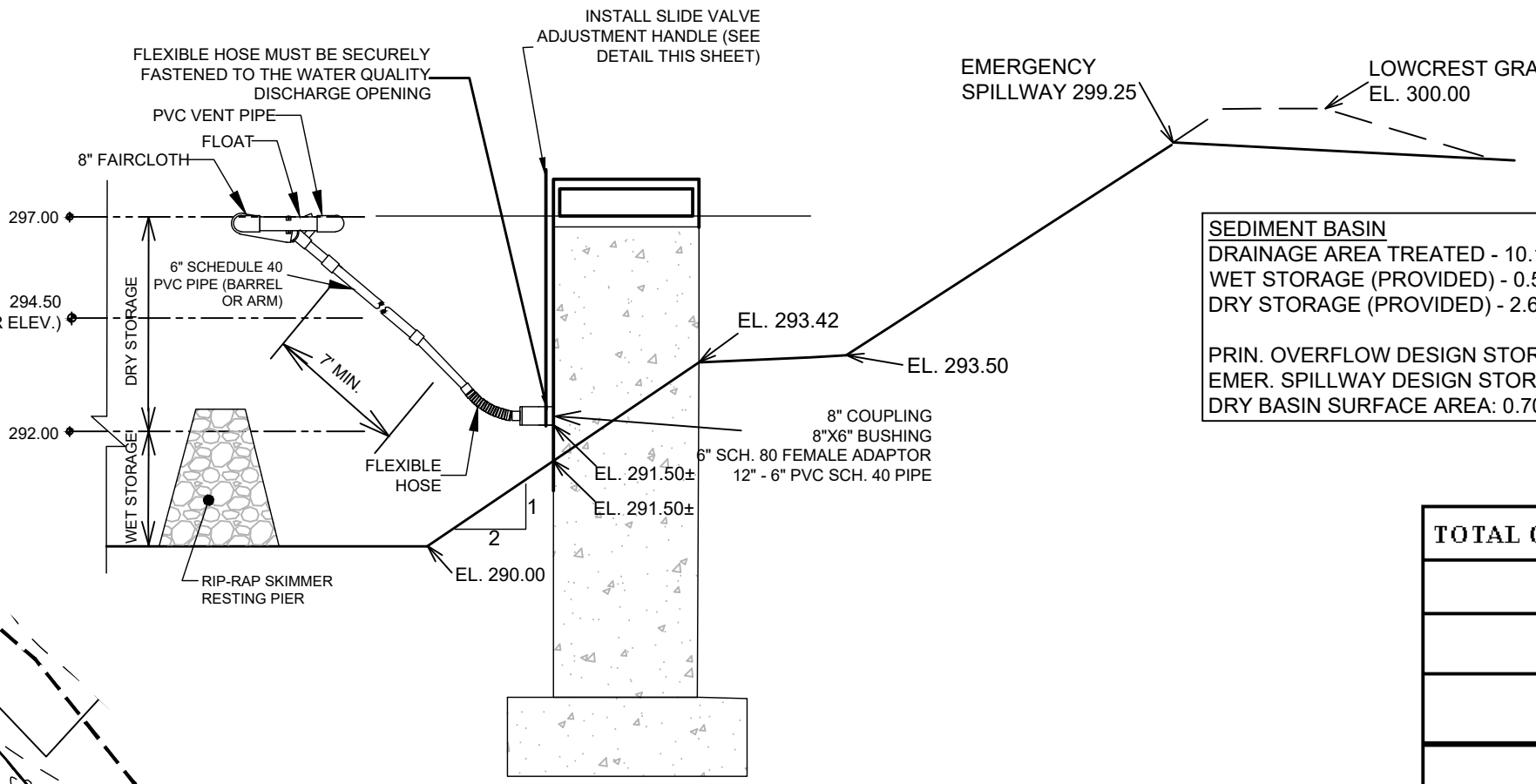


- EROSION CONTROL NOTES:**
- ALL EROSION AND SEDIMENT CONTROL MEASURES SHOWN ON THE PLAN ARE INTENDED AS A MINIMUM GUIDE. THE CONTRACTOR SHALL BE RESPONSIBLE FOR INSTALLING AND MAINTAINING ADDITIONAL OR ALTERNATE EROSION AND SEDIMENT CONTROL MEASURES AS NECESSARY TO MEET ALL APPLICABLE LOCAL, STATE AND FEDERAL GUIDELINES REGULATING STORM WATER DISCHARGES FROM CONSTRUCTION SITES.
 - IN ADDITION TO IMPLEMENTING THE EROSION AND SEDIMENT CONTROL MEASURES SHOWN ON THE PLANS, THE CONTRACTOR WILL BE RESPONSIBLE FOR IMPLEMENTING AND FOLLOW ALL EROSION AND SEDIMENT CONTROL MEASURES AND PRACTICES AS SET FORTH IN THE STORM WATER POLLUTION PREVENTION PLAN FILED WITH THE TENNESSEE DEPARTMENT OF ENVIRONMENT DIVISION OF WATER RESOURCES IN ASSOCIATION WITH THIS PROJECT.
 - ALTERNATIVE MEASURES CAN BE USED IN LIEU OF MEASURES PROPOSED ON THE PLANS, BUT THEY MUST BE APPROVED IN WRITING BY THE OWNER AND MUST BE EQUALLY OR MORE EFFECTIVE THAN THE MEASURES PROPOSED.
 - THE CONTRACTOR SHALL BE RESPONSIBLE FOR MITIGATING ANY OFF-SITE POLLUTED DISCHARGES WHICH RESULT FROM THE FAILURE TO IMPLEMENT AND MAINTAIN ADEQUATE EROSION AND SEDIMENT CONTROL MEASURES. ANY SUCH MITIGATION AND ANY FINES IMPOSED BY REGULATORY AGENCIES ASSOCIATED WITH SAID DISCHARGE SHALL BE THE CONTRACTOR'S RESPONSIBILITY WITHOUT ANY ADDITIONAL COST TO THE OWNER.
 - ALL CLEARING AND GRUBBING AND EARTHWORK ACTIVITIES SHALL BE DONE IN A SEQUENTIAL MANNER AND KEPT A MINIMUM AS NECESSARY FOR ACTIVE GRADING AND CONSTRUCTION ACTIVITIES IN ORDER TO MINIMIZE THE EXPOSURE TIME.
 - AS MUCH AS POSSIBLE, AVOID GRADING ACTIVITIES DURING PERIODS OF HIGHLY EROSIIVE RAINFALL.
 - ALL EROSION AND SEDIMENT CONTROL MEASURES SHALL BE IN PLACE AND FUNCTIONAL BEFORE EARTH DISTURBANCE ACTIVITIES ASSOCIATED WITH SAID MEASURES BEGIN.
 - EROSION AND SEDIMENT CONTROL MEASURES MUST BE PROPERLY INSTALLED, MAINTAINED, ADJUSTED AND RELOCATED AS NECESSARY THROUGHOUT CONSTRUCTION TO ADDRESS CHANGING SITE CONDITIONS.
 - INSPECT ALL EROSION AND SEDIMENT CONTROL MEASURES TWICE WEEKLY, A MINIMUM OF 72 HOURS APART AND AFTER EACH RAINFALL PER TDEC CONSTRUCTION GENERAL PERMIT REQUIREMENTS. DAILY CHECKING IS REQUIRED DURING PROLONGED RAINFALL. MAINTAIN A RAIN GAUGE ON SITE WITH A PERMANENT RAINFALL LOG. MAINTAIN A PERMANENT LOG OF CHECKS AND MAINTENANCE MEASURES.
 - DESIGNATE A SPECIFIC QUALIFIED INDIVIDUAL TO BE RESPONSIBLE FOR EROSION AND SEDIMENT CONTROLS AND TO KEEP THE PERMANENT JOB LOG. THE PERSON RESPONSIBLE FOR MAINTAINING EROSION CONTROL MEASURES AND LOG SHALL HAVE THE APPROPRIATE CERTIFICATION AS REQUIRED BY TDEC. A COPY OF THIS CERTIFICATION SHALL BE MAINTAINED AT THE JOB SITE.
 - STABILIZE ANY DISTURBED AREAS WHERE CONSTRUCTION IS COMPLETE OR NO CONSTRUCTION ACTIVITY WILL BE ON GOING FOR MORE THAN FOURTEEN (14) DAYS.
 - CHECK ALL EROSION AND SEDIMENT CONTROL MEASURES WEEKLY AND AFTER EACH RAINFALL, AS WELL AS PRIOR TO ANTICIPATED RAINFALL EVENTS. DAILY INSPECTION IS REQUIRED DURING PROLONGED RAINFALL EVENTS.
 - PLACE TRENCH EXCAVATION MATERIAL ON UP SLOPE SIDE OF THE TRENCH EXCAVATION SUCH THAT ANY EROSION IS NOT WASHED INTO THE TRENCH.
 - DO NOT DESTROY, REMOVE OR DISTURB VEGETATIVE COVER MORE THAN FOURTEEN (14) DAYS PRIOR TO GRADING.
 - AS SOON AS POSSIBLE AFTER FINAL GRADING AND CONSTRUCTION, APPLY PERMANENT SOIL STABILIZATION WITH PERENNIAL VEGETATION.
 - IN ACCORDANCE WITH THE SHELBY COUNTY MS4 PERMIT, ALL STATE/NPDES PERMITS ARE REQUIRED TO HAVE BEEN OBTAINED AND IMPLEMENTED BEFORE START-UP OF ANY CONSTRUCTION ACTIVITIES, INCLUDING, BUT NOT LIMITED TO LAND AND/OR AQUATIC DISTURBANCE.
 - EROSION CONTROL MEASURES SHALL BE MAINTAINED AT ALL TIMES. IF FULL IMPLEMENTATION OF THE APPROVED PLAN DOES NOT PROVIDE FOR EFFECTIVE EROSION CONTROL, ADDITIONAL EROSION AND SEDIMENT CONTROL MEASURES SHALL BE IMPLEMENTED TO CONTROL AND/OR TREAT THE SEDIMENT SOURCE BEFORE LAND AND/OR AQUATIC DISTURBANCE MAY CONTINUE.
 - INSTALL STAKED AND ENTRENCHED MULCH SOCKS AND/OR SILT FENCE ALONG THE BASE OF ALL BACKFILLS AND CUTS, ON THE DOWNHILL SIDE OF STOCKPILED SOIL, AND ALONG DITCH BANKS IN CLEARED AREAS TO PREVENT EROSION INTO DITCHES. PLACE SILT FENCE ALONG CONTOURS. DO NOT ALLOW SILT FENCE TO CAUSE CONCENTRATED FLOW.
 - USE A STABILIZED PAD OF CLEAN, PROPERLY SIZED ROCK FOR CONSTRUCTION ACCESS AS INDICATED ON THE PLANS AND IN ACCORDANCE WITH THE CURRENT EDITION OF THE TENNESSEE EROSION AND SEDIMENT CONTROL HANDBOOK.
 - MAINTENANCE AND OPERATION OF ALL EROSION PROTECTION AND SEDIMENT CONTROL MEASURES SHALL BE INCLUDED IN THE COST FOR SAID MEASURES, AND SHALL BE CONSIDERED INCIDENTAL TO EPSC. THIS WILL INCLUDE THE REMOVAL AND PROPER DISPOSAL OF ACCUMULATED SEDIMENT AT ANY TIME IT REACHES THE MAXIMUM ALLOWABLE HEIGHT AS PER THE PLANS AND/OR STORM WATER POLLUTION PREVENTION PLAN ON FILE WITH TDEC, AS WELL AS ONCE THE ACTUAL MEASURES ARE NO LONGER REQUIRED AND READY TO BE REMOVED. REMOVAL OF THE ACTUAL SAID MEASURES, SUCH AS REMOVAL OF SILT FENCE AND INLET BARRIERS SHALL BE INCIDENTAL AS WELL.

Batch Treatment Sediment Basin

TOTAL OFFSITE & ONSITE DRAINAGE AREA (ACRES):	10.1
DESIGN STORM EVENT DEPTH (IN.):	4.0
CN USED TO DETERMINE BASIN VOLUME:	83
WET STORAGE VOLUME:	0.54 Ac-Ft.
DESIGN STORM + 20% STORAGE VOLUME:	2.16 Ac-Ft.
VOLUME OF WATER IN BASIN WHEN FLOCCULANT/COAGULANT MUST BE APPLIED:	1.06 Ac-Ft.
25-YEAR, 24-HOUR STORM ELEVATION:	297.26
PERMANENT POOL LEVEL / WET STORAGE ELEVATION:	292.00
DESIGN STORM + 20% STORAGE ELEVATION:	296.10
BOTTOM OF BASIN ELEVATION:	290.00
PRINCIPAL SPILLWAY ELEVATION:	297.00
OUTFALL PIPE DISCHARGE ELEVATION:	286.00
ELEVATION OF THE RECEIVING MEDIUM DOWNSTREAM OF THE OUTFALL:	283.45
EMERGENCY SPILLWAY ELEVATION:	299.25
DESIGN STORM ABOVE WHICH THE BASIN WILL DISCHARGE VIA THE EMERGENCY SPILLWAY:	>100-Yr
EMERGENCY SPILLWAY SLOPE:	5:1
EMERGENCY SPILLWAY WIDTH:	10
TOP OF EMBANKMENT ELEVATION:	300.00
APPLY FLOCCULANT/COAGULANT & BEGIN Dewatering ELEVATION:	294.50
DEWATER TO ELEVATION:	292.00

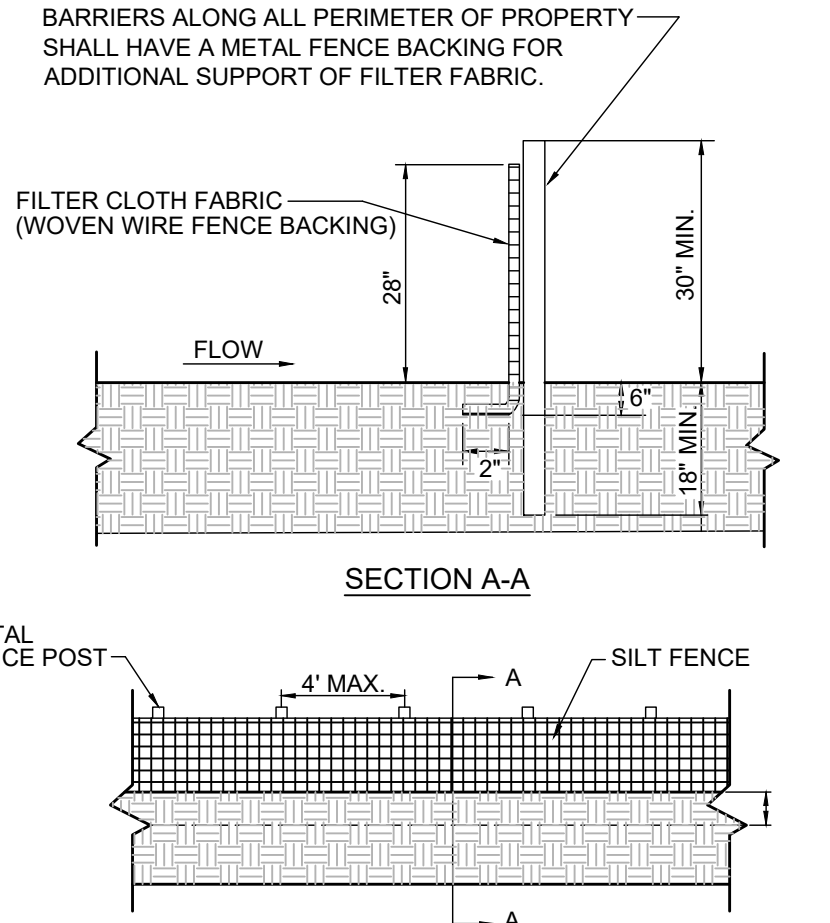
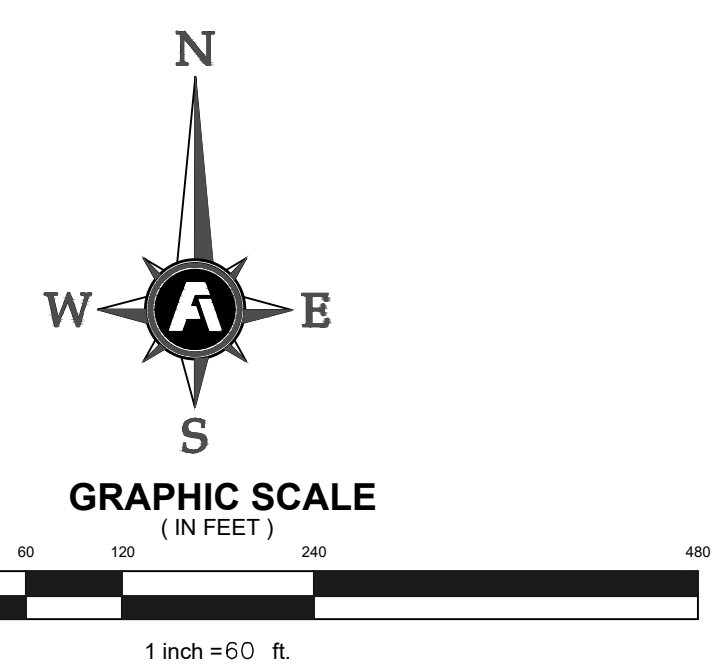
TEMPORARY SEDIMENT BASIN OUTLET STRUCTURE



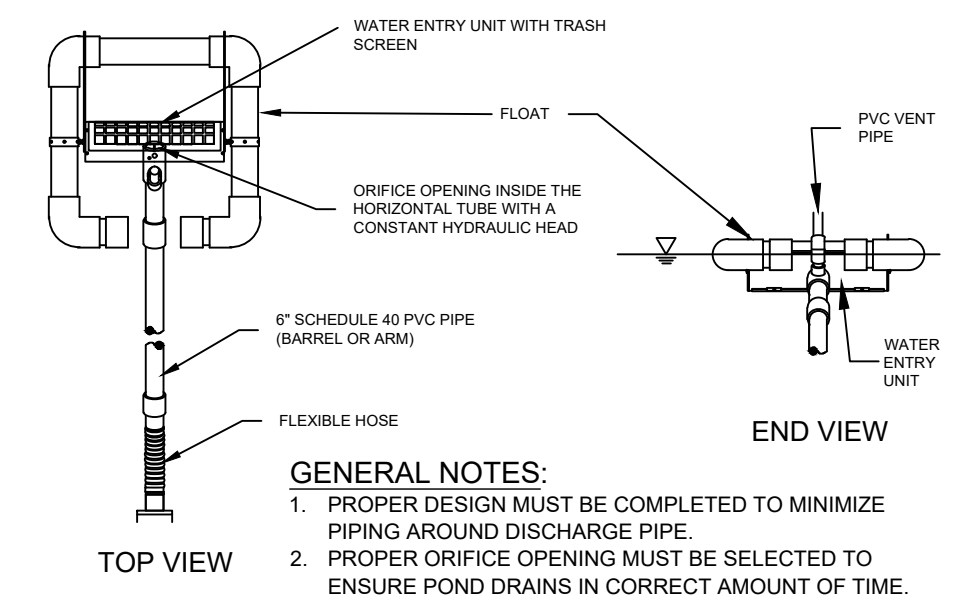
- SEDIMENT BASIN CHEMICAL TREATMENT GUIDELINES (IF NECESSARY)**
- A COAGULANT BLEND OF ALUMINUM SALT PLUS POLYMER OR AN APPROVED EQUAL SHALL BE APPLIED TO THE SEDIMENT BASIN TO FLOC SOLIDS.
 - THE CHEMICAL TREATMENT WILL BE APPLIED VIA A SPRAY MIXTURE WITH A HYDRO SEEDER. THE CHEMICAL WILL BE DILUTED IN A HYDRO SEEDER BASED ON SEDIMENT BASIN CALCULATIONS.
 - IF THE HYDRO SEEDER CANNOT EVENLY SPRAY THE MIXTURE ACROSS THE ENTIRE SURFACE, A POND AGITATOR/MIXER WILL BE USED TO AGITATE THE MIXTURE.
 - THE TIME BETWEEN THE CHEMICAL TREATMENT APPLICATION AND DEWATERING SHALL BE TWENTY-FOUR (24) HOURS.
 - ONCE THE WATER IS FULLY TREATED, THE TREATED WATER SHALL BE DISCHARGED BY VIA THE DEWATERING DEVICE AND/OR VIA PUMPING UTILIZING A SUCTION END FLOATING TO AVOID REMOVAL OF SEDIMENT FROM THE BOTTOM OF SEDIMENT BASIN.
 - WHEN THE WET STORAGE ACHIEVES A POOL ELEVATION OF 293.00 OR GREATER, THE BASIN SHALL BE CHEMICALLY TREATED AND DEWATERED AS OUTLINED HEREIN. THE BASIN POOL SHALL BE DEWATERED TO AN ELEVATION OF 296.00.

LIMITS OF STREAM BUFFER (TYP.)

WALKING TRAIL TO BE INSTALLED AT GRADE AFTER GRADING COMPLETE & SITE STABILIZED. WALKING TRAIL ALIGNMENT TO BE ADJUSTED TO AVOID TREES & MINIMIZE DISTURBANCE



TYPE 'C' SILT FENCE/SEDIMENT BARRIER
 NTS



- GENERAL NOTES:**
- PROPER DESIGN MUST BE COMPLETED TO MINIMIZE PIPING AROUND DISCHARGE PIPE.
 - PROPER ORIFICE OPENING MUST BE SELECTED TO ENSURE POND DRAINS IN CORRECT AMOUNT OF TIME. MODIFICATIONS MAY BE REQUIRED IF FIELD CONDITIONS WARRANT A CHANGE.
 - EMBANKMENT MUST BE COMPACTED TO DESIGN SPECIFICATIONS.
 - EMERGENCY SPILLWAY MUST BE CORRECTLY SIZED AND EROSION PROTECTION INSTALLED.
 - EROSION PROTECTION MUST BE INSTALLED ALONG THE EMBANKMENT AND AT THE DISCHARGE END OF THE PIPE.
 - INSPECT SYSTEM REGULARLY TO ENSURE IT IS FUNCTIONING IN A CORRECT MANNER.
 - SKIMMER SIZE IS TO BE 8".
 - CONTRACTOR TO SUBMIT OUTLET DESIGN TO OWNER PRIOR TO INSTALLATION.

REVISION		
ITEM NO.	DESCRIPTION OF CHANGE	APPROVAL DATE

PHASE 6B
SPRING CREEK RANCH P.D.
 DEVELOPER: CREEKSIDE HOMES, L.L.C.
 ENGINEER: FISHER ARNOLD

TBM: MLGW GPS 116
 LOCATED 44' NORTHWEST CORNER OF RALEIGH
 LaGRANGE ROAD AND COLD CREEK DR.
 ELEV. 328.79

THIS PROPERTY IS NOT LOCATED IN A 100 YEAR
 FLOOD HAZARD AREA. F.E.M.A. PANEL 47157C 0485G.
 DATED FEBRUARY 6, 2013

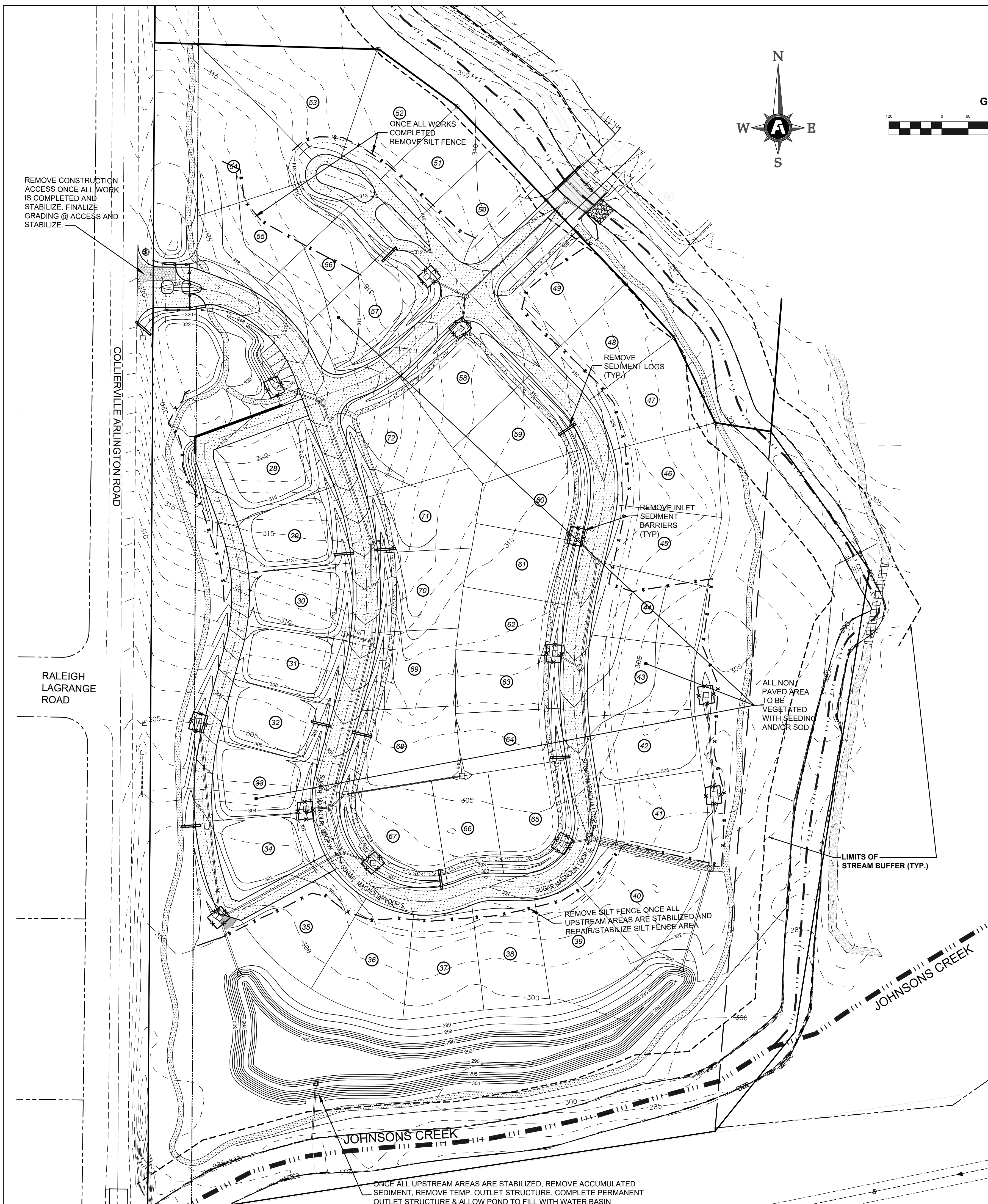
SHEET 1 OF 3
 DIVISION OF ENGINEERING
EROSION CONTROL PLAN
INITIAL PHASE
SHELBY COUNTY, TENNESSEE

SURVEY: F&A, INC. DATE: 03/05 PROJECT NO.: CREEKSID0003D
 DESIGNED BY: F&A, INC. DATE: 01/13 BOOK:
 DRAWN BY: F&A, INC. DATE: 01/15 SCALE: 1"=60'

REVIEWED
 COUNTY ENGINEER DATE

THIS SHEET SUPERCEDES A SHEET OF THE SAME TITLE
 PREVIOUSLY APPROVED ON 10-09-2014

Copyright 2022 Fisher & Arnold, Inc., all rights reserved
 Filename: Z:\CREKSID\0003LD\Subdivision\Plans\PH6B_EP_01.dwg
 Plotted: Thursday, January 13, 2022 - 2:23 pm



LEGEND

[Symbol: Square with X's] SILT FENCE BARRIER AROUND YARD INLETS

[Symbol: Line with X's] SILT FENCE (TYPE "C")

[Symbol: Dashed line] SEDIMENT LOGS

- EROSION CONTROL NOTES:**
- ALL EROSION AND SEDIMENT CONTROL MEASURES SHOWN ON THE PLAN ARE INTENDED AS A MINIMUM GUIDE. THE CONTRACTOR SHALL BE RESPONSIBLE FOR INSTALLING AND MAINTAINING ADDITIONAL OR ALTERNATE EROSION AND SEDIMENT CONTROL MEASURES AS NECESSARY TO MEET ALL APPLICABLE LOCAL, STATE AND FEDERAL GUIDELINES REGULATING STORM WATER DISCHARGES FROM CONSTRUCTION SITES.
 - IN ADDITION TO IMPLEMENTING THE EROSION AND SEDIMENT CONTROL MEASURES SHOWN ON THE PLANS, THE CONTRACTOR WILL BE RESPONSIBLE FOR IMPLEMENTING AND FOLLOW ALL EROSION AND SEDIMENT CONTROL MEASURES AND PRACTICES AS SET FORTH IN THE STORM WATER POLLUTION PREVENTION PLAN FILED WITH THE TENNESSEE DEPARTMENT OF ENVIRONMENT DIVISION OF WATER RESOURCES IN ASSOCIATION WITH THIS PROJECT.
 - ALTERNATIVE MEASURES CAN BE USED IN LIEU OF MEASURES PROPOSED ON THE PLANS, BUT THEY MUST BE APPROVED IN WRITING BY THE OWNER AND MUST BE EQUALLY OR MORE EFFECTIVE THAN THE MEASURES PROPOSED.
 - THE CONTRACTOR SHALL BE RESPONSIBLE FOR MITIGATING ANY OFF-SITE POLLUTED DISCHARGES WHICH RESULT FROM THE FAILURE TO IMPLEMENT AND MAINTAIN ADEQUATE EROSION AND SEDIMENT CONTROL MEASURES. ANY SUCH MITIGATION AND ANY FINES IMPOSED BY REGULATORY AGENCIES ASSOCIATED WITH SAID DISCHARGE SHALL BE THE CONTRACTOR'S RESPONSIBILITY WITHOUT ANY ADDITIONAL COST TO THE OWNER.
 - ALL CLEARING AND GRUBBING AND EARTHWORK ACTIVITIES SHALL BE DONE IN A SEQUENTIAL MANNER AND KEPT A MINIMUM AS NECESSARY FOR ACTIVE GRADING AND CONSTRUCTION ACTIVITIES IN ORDER TO MINIMIZE THE EXPOSURE TIME.
 - AS MUCH AS POSSIBLE, AVOID GRADING ACTIVITIES DURING PERIODS OF HIGHLY EROSIIVE RAINFALL.
 - ALL EROSION AND SEDIMENT CONTROL MEASURES SHALL BE IN PLACE AND FUNCTIONAL BEFORE EARTH DISTURBANCE ACTIVITIES ASSOCIATED WITH SAID MEASURES BEGIN.
 - EROSION AND SEDIMENT CONTROL MEASURES MUST BE PROPERLY INSTALLED, MAINTAINED, ADJUSTED AND RELOCATED AS NECESSARY THROUGHOUT CONSTRUCTION TO ADDRESS CHANGING SITE CONDITIONS.
 - INSPECT ALL EROSION AND SEDIMENT CONTROL MEASURES TWICE WEEKLY, A MINIMUM OF 72 HOURS APART AND AFTER EACH RAINFALL PER TDEC CONSTRUCTION GENERAL PERMIT REQUIREMENTS. DAILY CHECKING IS REQUIRED DURING PROLONGED RAINFALL. MAINTAIN A RAIN GAUGE ON SITE WITH A PERMANENT RAINFALL LOG. MAINTAIN A PERMANENT LOG OF CHECKS AND MAINTENANCE MEASURES.
 - DESIGNATE A SPECIFIC QUALIFIED INDIVIDUAL TO BE RESPONSIBLE FOR EROSION AND SEDIMENT CONTROLS AND TO KEEP THE PERMANENT JOB LOG. THE PERSON RESPONSIBLE FOR MAINTAINING EROSION CONTROL MEASURES AND LOG SHALL HAVE THE APPROPRIATE CERTIFICATION AS REQUIRED BY TDEC. A COPY OF THIS CERTIFICATION SHALL BE MAINTAINED AT THE JOB SITE.
 - STABILIZE ANY DISTURBED AREAS WHERE CONSTRUCTION IS COMPLETE OR NO CONSTRUCTION ACTIVITY WILL BE ON GOING FOR MORE THAN FOURTEEN (14) DAYS.
 - CHECK ALL EROSION AND SEDIMENT CONTROL MEASURES WEEKLY AND AFTER EACH RAINFALL, AS WELL AS PRIOR TO ANTICIPATED RAINFALL EVENTS. DAILY INSPECTION IS REQUIRED DURING PROLONGED RAINFALL EVENTS.
 - PLACE TRENCH EXCAVATION MATERIAL ON UP SLOPE SIDE OF THE TRENCH EXCAVATION SUCH THAT ANY EROSION IS NOT WASHED INTO THE TRENCH.
 - DO NOT DESTROY, REMOVE OR DISTURB VEGETATIVE COVER MORE THAN FOURTEEN (14) DAYS PRIOR TO GRADING.
 - AS SOON AS POSSIBLE AFTER FINAL GRADING AND CONSTRUCTION, APPLY PERMANENT SOIL STABILIZATION WITH PERENNIAL VEGETATION.
 - IN ACCORDANCE WITH THE SHELBY COUNTY MS4 PERMIT, ALL STATE/NPDES PERMITS ARE REQUIRED TO HAVE BEEN OBTAINED AND IMPLEMENTED BEFORE START-UP OF ANY CONSTRUCTION ACTIVITIES, INCLUDING, BUT NOT LIMITED TO LAND AND/OR AQUATIC DISTURBANCE.
 - EROSION CONTROL/MEASURES SHALL BE MAINTAINED AT ALL TIMES, IF FULL IMPLEMENTATION OF THE APPROVED PLAN DOES NOT PROVIDE FOR EFFECTIVE EROSION CONTROL, ADDITIONAL EROSION AND SEDIMENT CONTROL MEASURES SHALL BE IMPLEMENTED TO CONTROL AND /OR TREAT THE SEDIMENT SOURCE BEFORE LAND AND /OR AQUATIC DISTURBANCE MAY CONTINUE.
 - INSTALL STAKED AND ENTRENCHED MULCH SOCKS AND/OR SILT FENCE ALONG THE BASE OF ALL BACKFILLS AND CUTS, ON THE DOWNHILL SIDE OF STOCKPILED SOIL, AND ALONG DITCH BANKS IN CLEARED AREAS TO PREVENT EROSION INTO DITCHES. PLACE SILT FENCE ALONG CONTOURS. DO NOT ALLOW SILT FENCE TO CAUSE CONCENTRATED FLOW.
 - USE A STABILIZED PAD OF CLEAN, PROPERLY SIZED ROCK FOR CONSTRUCTION ACCESS AS INDICATED ON THE PLANS AND IN ACCORDANCE WITH THE CURRENT EDITION OF THE TENNESSEE EROSION AND SEDIMENT CONTROL HANDBOOK.
 - MAINTENANCE AND OPERATION OF ALL EROSION PROTECTION AND SEDIMENT CONTROL MEASURES SHALL BE INCLUDED IN THE COST FOR SAID MEASURES, AND SHALL BE CONSIDERED INCIDENTAL TO EPSC. THIS WILL INCLUDE THE REMOVAL AND PROPER DISPOSAL OF ACCUMULATED SEDIMENT AT ANY TIME IT REACHES THE MAXIMUM ALLOWABLE HEIGHT AS PER THE PLANS AND/OR STORM WATER POLLUTION PREVENTION PLAN ON FILE WITH TDEC, AS WELL ONCE THE ACTUAL MEASURES ARE NO LONGER REQUIRED AND READY TO BE REMOVED. REMOVAL OF THE ACTUAL SAID MEASURES, SUCH AS REMOVAL OF SILT FENCE AND INLET BARRIERS SHALL BE INCIDENTAL AS WELL.

THIS SHEET SUPERCEDES A SHEET OF THE SAME TITLE PREVIOUSLY APPROVED ON 10-09-2014

TBM: MLGW GPS 116
 LOCATED 44' NORTHWEST CORNER OF RALEIGH
 LaGRANGE ROAD AND COLD CREEK DR.
 ELEV. 328.79

THIS PROPERTY IS NOT LOCATED IN A 100 YEAR
 FLOOD HAZARD AREA. F.E.M.A. PANEL 47157C 0485G,
 DATED FEBRUARY 6, 2013

REVISION		
ITEM NO.	DESCRIPTION OF CHANGE	APPROVAL DATE

PHASE 6B
SPRING CREEK RANCH P.D.
 DEVELOPER: CREEKSIDE HOMES, L.L.C.
 ENGINEER: FISHER ARNOLD

SHEET 3 OF 3
 DIVISION OF ENGINEERING
EROSION CONTROL PLAN
FINAL PHASE
SHELBY COUNTY, TENNESSEE

SURVEY: F&A, INC. DATE: 03/05 PROJECT NO: CREEKSID.0003LD
 DESIGNED BY: F&A, INC. DATE: 01/13 BOOK:
 DRAWN BY: F&A, INC. DATE: 01/15 SCALE: 1"=60'

REVIEWED _____
 COUNTY ENGINEER _____ DATE _____