



# BLUE WATER INDUSTRIES BWI ETN LLC

## NPDES RENEWAL APPLICATION WITH MODIFICATION

for

**BWI Midway, LLC – Quarry  
NPDES Permit # TN0031089**

Approximate Permitted Acreage: ± 491.17 Acres

Location:

36° 03' 49.4" N Lat. 83° 43' 17.5" W Long.  
9600 Mascot Road, Mascot, Knox County, Tennessee 37806

Date:

October 2022

Corporate Official Responsible for Quarry:

Jeff Ferrell  
General Manager – BWI ETN LLC

Application Prepared by:

Ryan Maloney, P.E.  
Professional Engineer  
Griggs & Maloney, Incorporated

Curtis Broadbent  
Project Engineer  
Griggs and Maloney, Incorporated



*Curtis Broadbent*

Application Prepared & Signed by:

Walt Hillis, Environmental Manager  
Blue Water Industries

*Walt Hillis*

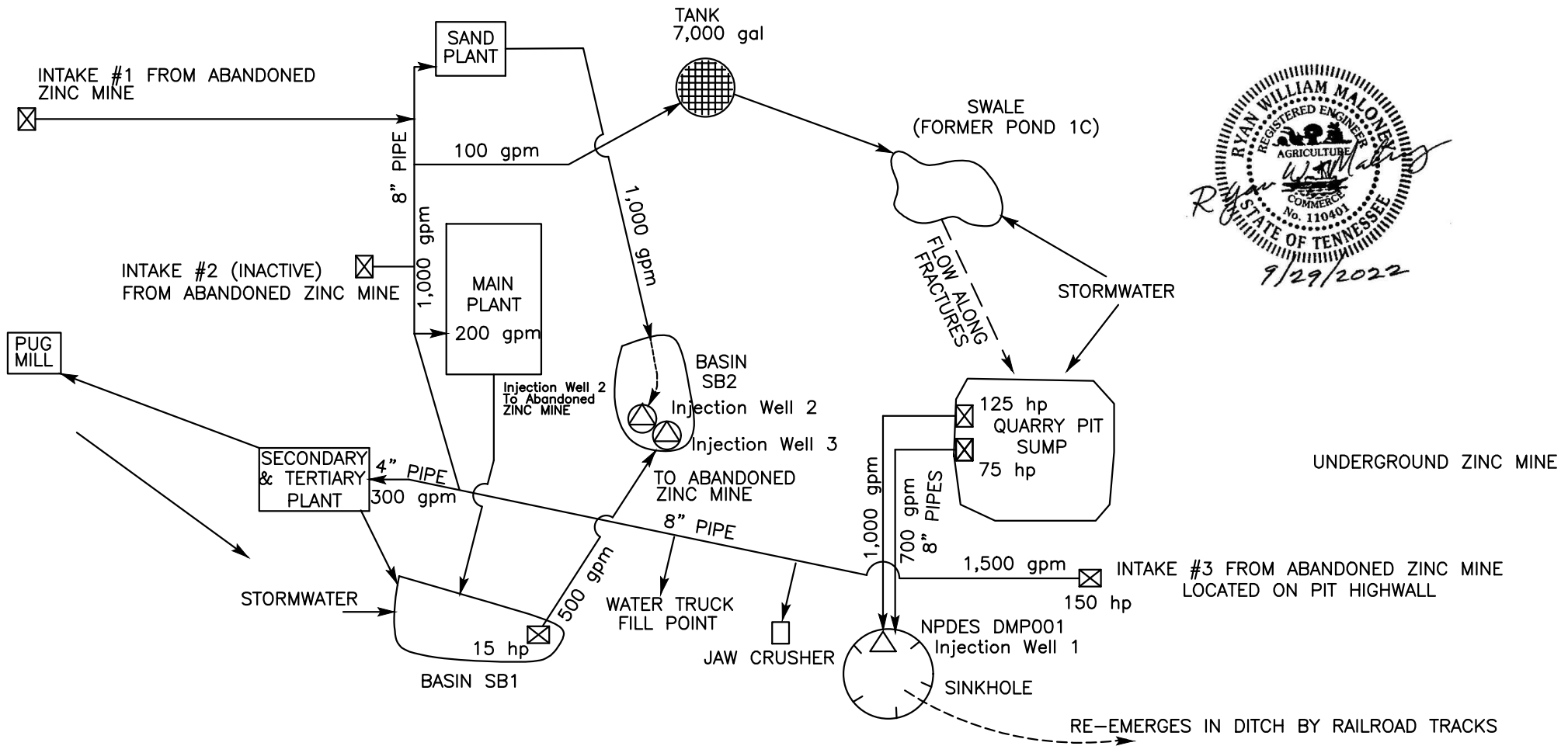


**APPROVED**

DIVISION OF MINERAL &  
GEOLOGIC RESOURCES

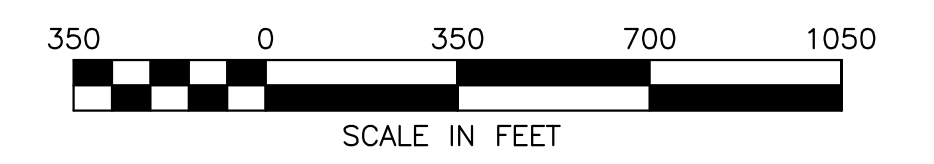
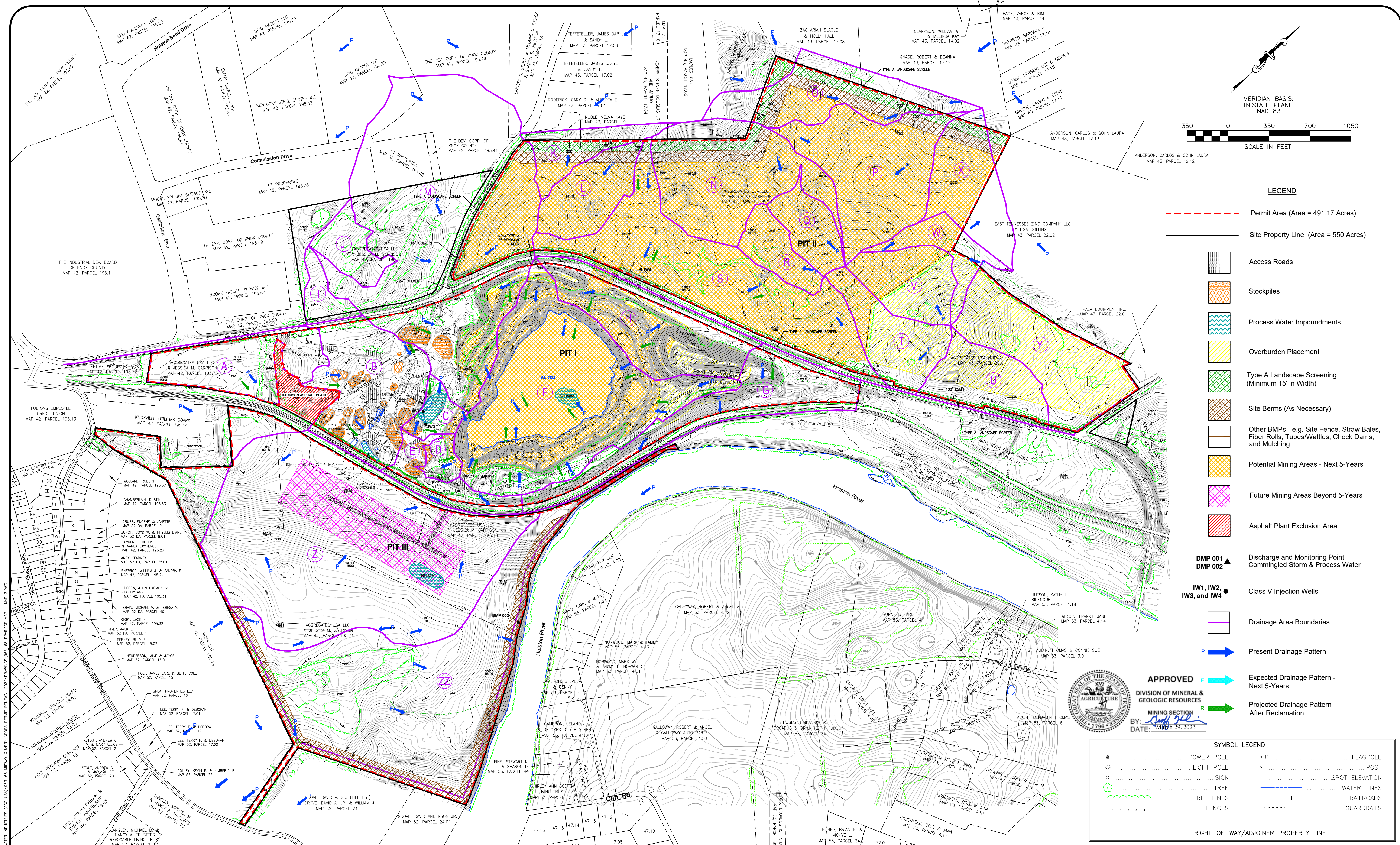
MINING SECTION

BY: *Jeff Ferrell*  
DATE: March 29, 2023



NOTE:  
 ALL FLOW RATES SHOWN ARE MAXIMUM  
 RATED PUMP CAPACITIES. ACTUAL FLOW  
 RATES ARE LESS.

|   |              |
|---|--------------|
| DRAWING A – EPA Form 2C Water Flow Line Drawing |              |
| MIDWAY QUARRY – KNOX CO., TN.                   |              |
| BWI MIDWAY, LLC – QUARRY                        |              |
| 36° 3' 49.9" N<br>83° 43' 17.5" W               | OCTOBER 2022 |



- LEGEND**
- Permit Area (Area = 491.17 Acres)
  - Site Property Line (Area = 550 Acres)
  - Access Roads
  - Stockpiles
  - Process Water Impoundments
  - Overburden Placement
  - Type A Landscape Screening (Minimum 15' in Width)
  - Site Berms (As Necessary)
  - Other BMPs - e.g. Site Fence, Straw Bales, Fiber Rolls, Tubes/Wattles, Check Dams, and Mulching
  - Potential Mining Areas - Next 5-Years
  - Future Mining Areas Beyond 5-Years
  - Asphalt Plant Exclusion Area
  - DMP 001
  - DMP 002
  - IW1, IW2, IW3, and IW4
  - Class V Injection Wells
  - Drainage Area Boundaries
  - Present Drainage Pattern
  - Expected Drainage Pattern - Next 5-Years
  - Projected Drainage Pattern After Reclamation

**APPROVED**

DIVISION OF MINERAL & GEOLOGICAL RESOURCES

MINING SECTION

BY: *[Signature]*

DATE: MARCH 29, 2023

SYMBOL LEGEND

|  |  |
|--|--|
| <ul style="list-style-type: none"> <li> POWER POLE</li> <li> LIGHT POLE</li> <li> SIGN</li> <li> TREE</li> <li> TREE LINES</li> <li> FENCES</li> </ul> | <ul style="list-style-type: none"> <li> FLAGPOLE</li> <li> POST</li> <li> SPOT ELEVATION</li> <li> WATER LINES</li> <li> RAILROADS</li> <li> GUARDRAILS</li> </ul> |
|--|--|

RIGHT-OF-WAY/ADJOINER PROPERTY LINE

**SUBMITTALS AND REVISIONS**

| DATE     | BY  | NO. | DESCRIPTION                        |
|----------|-----|-----|------------------------------------|
| 9/7/22   | LAF | 1   | UPDATE PERMIT AREA                 |
| 9/28/22  | LAF | 2   | UPDATE LEGEND; BERMS; MINING AREA  |
| 11/03/22 | LAF | 3   | ADDED DA Z & ZZ; ADDED MINING AREA |



**BLUE WATER INDUSTRIES**

BWI MIDWAY, LLC - QUARRY

LAT. 36-03-49.4N AND LONG. 83-43-17.5W

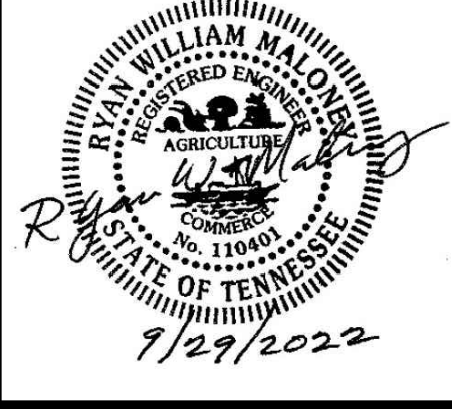
KNOX COUNTY, TENNESSEE

DRAINAGE MAP - MAP 3

**GRIGGS & MALONEY INCORPORATED**

Engineering & Environmental Consulting

P.O. BOX 2968, MURFREESBORO, TN 37133-2968  
(615) 895-8221 \* FAX (615) 895-0632



**PROJECT NO. 963-68**

|                 |                  |
|-----------------|------------------|
| NOVEMBER 2022   | DRAWN BY: DSM    |
| DATE: _____     | CHECKED BY: RWM  |
| SCALE: AS NOTED | APPROVED BY: RWM |

FILE NAME: I:\CONTRACTS\1045\1045-048-MIDWAY QUARRY IMPROVEMENTS PERMIT RENEWAL 2022\DRAWINGS\1045-048 DRAINAGE MAP - MAP 3.DWG

© 2017 Griggs & Maloney, Inc.