



**STATE OF TENNESSEE  
DEPARTMENT OF ENVIRONMENT AND CONSERVATION  
DIVISION OF WATER RESOURCES**

William R. Snodgrass - Tennessee Tower  
312 Rosa L. Parks Avenue, 11<sup>th</sup> Floor  
Nashville, Tennessee 37243-1102

July 29, 2022

The Honorable Bennett Armstrong  
Mayor-Town of Alexandria  
e-copy: [cityrecorder@dtccom.net](mailto:cityrecorder@dtccom.net)  
Town of Alexandria  
102 High Street  
Alexandria, TN 37243

Subject: **NPDES Permit No. TN0021539  
Town of Alexandria  
Alexandria, DeKalb County, Tennessee**

Dear Mayor Armstrong:

In accordance with the provisions of the Tennessee Water Quality Control Act, Tennessee Code Annotated (T.C.A.), Sections 69-3-101 through 69-3-120, the Division of Water Resources hereby issues the enclosed NPDES Permit. The continuance and/or reissuance of this NPDES Permit is contingent upon your meeting the conditions and requirements as stated therein.

Please be advised that a petition for permit appeal may be filed, pursuant to T.C.A. Section 69-3-105, subsection (i), by the permit applicant or by any aggrieved person who participated in the public comment period or gave testimony at a formal public hearing whose appeal is based upon any of the issues that were provided to the commissioner in writing during the public comment period or in testimony at a formal public hearing on the permit application.

Additionally, for those permits for which the department gives public notice of a draft permit, any permit applicant or aggrieved person may base a permit appeal on any material change to conditions in the final permit from those in the draft, unless the material change has been subject to additional opportunity for public comment.

Any petition for permit appeal under this subsection (i) shall be filed with the Technical Secretary of the Water Quality, Oil and Gas Board within thirty (30) days after public notice of the commissioner's decision to issue or deny the permit. A copy of the filing should also be sent to TDEC's Office of General Counsel.

TDEC has activated a new email address to accept appeals electronically. If you wish to file an appeal, you may do so by emailing the appeal and any attachments to [TDEC.Appeals@tn.gov](mailto:TDEC.Appeals@tn.gov). If you file an appeal electronically, you do not have to send a paper copy. If you have questions about your electronic filing, you can call (615) 532-0131. Electronic filing is encouraged, but not required.

If you have questions, please contact the Cookeville Environmental Field Office at 1-888-891-TDEC; or, at this office, please contact Ms. Maybelle T. Sparks, P.E. at (615) 532-0651 or by E-mail at [Maybelle.Sparks@tn.gov](mailto:Maybelle.Sparks@tn.gov).

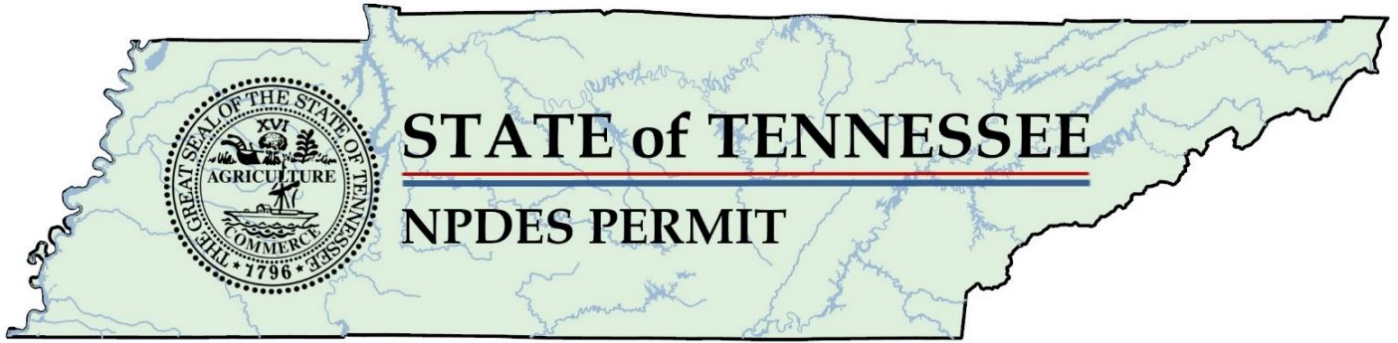
Sincerely,



Vojin Janjić  
Manager, Water-Based Systems

Enclosure

cc: Permit Section File & Cookeville Environmental Field Office  
Mr. Richard Potter, Superintendent, Smith Utility District , [smithwaterplant@dtccom.net](mailto:smithwaterplant@dtccom.net)  
Mr. Jerry B. Warren, P.E., Warren and Associates Engineering, PLLC,  
[jbwarren@warrenandassociates.net](mailto:jbwarren@warrenandassociates.net)



**Authorization to Discharge Under the  
National Pollutant Discharge Elimination System (NPDES)  
Permit Number TN0021539**

---

Issued by  
**Department of Environment and Conservation  
Division of Water Resources  
William R. Snodgrass - Tennessee Tower  
312 Rosa L. Parks Avenue, 11th Floor  
Nashville, Tennessee 37243-1102**

Under authority of the Tennessee Water Quality Control Act of 1977 (T.C.A. 69-3-101 et seq.) and the delegation of authority from the United States Environmental Protection Agency under the Federal Water Pollution Control Act, as amended by the Clean Water Act of 1977 (33 U.S.C. 1251, et seq.)

Discharger: **Town of Alexandria  
Alexandria STP**

is authorized to: treated municipal wastewater from Outfall 001  
from a facility located at: 35 Edgewood Road, Alexandria, DeKalb County, Tennessee  
to receiving waters named: Hickman Creek at mile 13.1  
in accordance with effluent limitations, monitoring requirements and other conditions set forth herein.

This permit shall become effective on: **August 1, 2022**

This permit shall expire on: **July 31, 2027**

Issuance date: **July 29, 2022**

  
for Jennifer Dodd  
Director

## Table of Contents

---

PART 1.....	1
1. EFFLUENT LIMITATIONS AND MONITORING REQUIREMENTS.....	1
1.1. Numeric and Narrative Effluent Limitations .....	1
1.1.1. Numeric Limitations .....	1
1.1.2. Collection System Requirements .....	6
1.1.3. Narrative Conditions .....	6
1.2. Monitoring Procedures .....	7
1.2.1. Representative Sampling .....	7
1.2.2. Sampling Frequency .....	8
1.2.3. Test Procedures.....	9
1.2.4. Recording of Results.....	9
1.2.5. Records Retention.....	10
1.3. Reporting.....	10
1.3.1. Monitoring Results.....	10
1.3.2. Additional Monitoring by Permittee .....	10
1.3.3. Falsifying Results and/or Reports .....	11
1.3.4. Monthly Report of Operation .....	11
1.3.5. Overflow, Release, and Bypass Reporting .....	11
1.3.5.1. Event Report Requirements.....	11
1.3.5.2. DMR Report Requirements.....	12
1.3.6. Reporting Less Than Detection; Reporting Significant Figures .....	12
1.3.7. Outlier Data.....	13
1.4. Compliance with Section 208 .....	14
1.5. Reopener Clause.....	14
1.6. Schedule of Compliance .....	14
1.7. Electronic Reporting.....	15
PART 2.....	16
2. GENERAL PERMIT REQUIREMENTS .....	16
2.1. GENERAL PROVISIONS .....	16
2.1.1. Duty to Comply .....	16

2.1.2.	Duty to Reapply.....	16
2.1.3.	Proper Operation and Maintenance.....	16
2.1.4.	Duty to Provide Information .....	17
2.1.5.	Right of Entry .....	17
2.1.6.	Availability of Reports .....	17
2.1.7.	Treatment Facility Failure (Industrial Sources) .....	17
2.1.8.	Property Rights.....	17
2.1.9.	Severability.....	18
2.1.10.	Other Information.....	18
2.2.	Changes Affecting the Permit.....	18
2.2.1.	Planned Changes.....	18
2.2.2.	Permit Modification, Revocation, or Termination .....	18
2.2.3.	Change of Ownership.....	19
2.2.4.	Change of Mailing Address .....	20
2.3.	Noncompliance.....	20
2.3.1.	Reporting of Noncompliance .....	20
2.3.2.	Overflows and Releases .....	22
2.3.3.	Upset .....	23
2.3.4.	Adverse Impact .....	24
2.3.5.	Bypass .....	24
2.3.6.	Washout.....	24
2.4.	Liabilities.....	25
2.4.1.	Civil and Criminal Liability .....	25
2.4.2.	Liability Under State Law .....	25
PART 3.....		26
3.	Permit Specific Requirements .....	26
3.1.	Certified Operator .....	26
3.2.	POTW Pretreatment Program General Provisions .....	26
3.3.	Biosolids Management Practices .....	28
3.4.	Placement of Signs .....	28
PART 4.....		30
4.	Definitions and Acronyms.....	30

4.1. Definitions .....	30
4.2. Acronyms and Abbreviations .....	38
4.3. Resources, Hyperlinks, and Web Pages.....	40
RATIONALE.....	1
1. FACILITY INFORMATION.....	1
2. Receiving Stream Information.....	4
3. Current Permit Status .....	4
4. New Permit Limitations and Compliance Schedule Summary .....	5
5. Previous Permit Term Review.....	6
6. Proposed Effluent Limits and Rationale .....	7
6.1. Conventional Parameters .....	8
6.1.1. CBOD <sub>5</sub> and Dissolved Oxygen .....	8
6.1.2. Total Suspended Solids (TSS) .....	8
6.1.3. Percent Removal .....	8
6.1.4. Settleable Solids.....	9
6.2. Flow.....	9
6.3. pH.....	9
6.4. Ammonia (NH <sub>3</sub> -N).....	9
6.5. Chlorination .....	12
6.6. Total Nitrogen and Total Phosphorus.....	12
6.7. <i>E. coli</i> .....	16
6.8. Biomonitoring.....	16
7. Collection Systems.....	16
7.1. Collection System Certified Operator .....	16
7.2. Collection System Operation .....	16
7.3. Low Pressure System Ownership/Control.....	17
8. Other Permit Requirements and Conditions .....	19
8.1. Certified Wastewater Treatment Operator .....	19
8.2. Pretreatment Program.....	19
8.3. Biosolids Management Practices .....	19
8.4. Permit Term .....	20
8.5. Electronic Reporting.....	20

8.6. Antidegradation Statement / Water Quality Status ..... 21  
Appendix 1 – Previous Permit Limits ..... 22  
Appendix 2 – DMR Summary..... 23

## PART 1

### 1. EFFLUENT LIMITATIONS AND MONITORING REQUIREMENTS

#### 1.1. NUMERIC AND NARRATIVE EFFLUENT LIMITATIONS

##### 1.1.1. Numeric Limitations

The Town of Alexandria is authorized to discharge treated municipal wastewater from Outfall 001 to Hickman Creek at mile 13.1 from a treatment facility with a design capacity of 0.3 MGD. Discharge from Outfall 001 shall be limited and monitored by the permittee as specified below:

<b>Description: External Outfall, Number: 001, Monitoring: Effluent Gross, Season: All Year, Limit Set Status: Active</b>							
<u>Code</u>	<u>Parameter</u>	<u>Qualifier</u>	<u>Value</u>	<u>Unit</u>	<u>Sample Type</u>	<u>Monitoring Frequency</u>	<u>Statistical Base</u>
00300	Oxygen, dissolved (DO)	>=	6.0	mg/L	Grab	Five Per Week	Instantaneous Minimum
00400	pH	>=	6.0	SU	Grab	Five Per Week	Minimum
00400	pH	<=	9.0	SU	Grab	Five Per Week	Maximum
00530	Total Suspended Solids (TSS)	<=	45	mg/L	Composite	Weekly	Daily Maximum
00530	Total Suspended Solids (TSS)	<=	100	lb/d	Composite	Weekly	Weekly Average
00530	Total Suspended Solids (TSS)	<=	75	lb/d	Composite	Weekly	Monthly Average
00530	Total Suspended Solids (TSS)	<=	40	mg/L	Composite	Weekly	Weekly Average
00530	Total Suspended Solids (TSS)	<=	30	mg/L	Composite	Weekly	Monthly Average
00545	Settleable Solids	<=	1.0	mL/L	Grab	Three Per Week	Daily Maximum
00600	Nitrogen, total (as N)	Report	-	mg/L	Composite	Weekly	Monthly Average
00600	Nitrogen, total (as N)	Report	-	lb/d	Composite	Weekly	Monthly Average
00600	Nitrogen, total (as N)	<=	7,502	lb/yr	Composite	Monthly	Annual Rolling Average
00665	Phosphorus, total (as P)	Report	-	lb/d	Composite	Weekly	Monthly Average
00665	Phosphorus, total (as P)	Report	-	mg/L	Composite	Weekly	Monthly Average





00665	Phosphorus, total (as P)	<=	1,562	lb/yr	Composite	Monthly	Annual Rolling Average
50050	Flow	Report	-	MGD	Continuous	Daily	Monthly Average
50050	Flow	Report	-	MGD	Continuous	Daily	Daily Maximum
51040	E. coli	<=	126	#/100mL	Grab	Three Per Week	Monthly Geometric Mean
51040	E. coli	<=	941	#/100mL	Grab	Three Per Week	Daily Maximum

**Description: External Outfall, Number: 001, Monitoring: Effluent Gross, Season: Summer, Limit Set Status: Active**

Code	Parameter	Qualifier	Value	Unit	Sample Type	Monitoring Frequency	Statistical Base
00610	Nitrogen, Ammonia total (as N)	<=	2.8	lb/d	Composite	Weekly	Monthly Average
00610	Nitrogen, Ammonia total (as N)	<=	1.1	mg/L	Composite	Weekly	Monthly Average
00610	Nitrogen, Ammonia total (as N)	<=	2.2	mg/L	Composite	Weekly	Daily Maximum
00610	Nitrogen, Ammonia total (as N)	<=	1.7	mg/L	Composite	Weekly	Weekly Average
00610	Nitrogen, Ammonia total (as N)	<=	4.2	lb/d	Composite	Weekly	Weekly Average
80082	CBOD, 5-day, 20 C	<=	10	mg/L	Composite	Weekly	Monthly Average
80082	CBOD, 5-day, 20 C	<=	25	lb/d	Composite	Weekly	Monthly Average
80082	CBOD, 5-day, 20 C	<=	37.5	lb/d	Composite	Weekly	Weekly Average
80082	CBOD, 5-day, 20 C	<=	20	mg/L	Composite	Weekly	Daily Maximum
80082	CBOD, 5-day, 20 C	<=	15	mg/L	Composite	Weekly	Weekly Average

**Description: External Outfall, Number: 001, Monitoring: Effluent Gross, Season: Summer, Limit Set Status: Compliance Schedule, Effective January 1, 2025**

Code	Parameter	Qualifier	Value	Unit	Sample Type	Monitoring Frequency	Statistical Base
00610	Nitrogen, Ammonia total (as N)	<=	1.8	lb/d	Composite	Weekly	Monthly Average
00610	Nitrogen, Ammonia total (as N)	<=	1.1	mg/L	Composite	Weekly	Weekly Average
00610	Nitrogen, Ammonia total (as N)	<=	0.7	mg/L	Composite	Weekly	Monthly Average
00610	Nitrogen, Ammonia total (as N)	<=	1.4	mg/L	Composite	Weekly	Daily Maximum
00610	Nitrogen, Ammonia total (as N)	<=	2.8	lb/d	Composite	Weekly	Weekly Average

<b>Description: External Outfall, Number: 001, Monitoring: Effluent Gross, Season: Winter, Limit Set Status: Active</b>							
<b>Code</b>	<b>Parameter</b>	<b>Qualifier</b>	<b>Value</b>	<b>Unit</b>	<b>Sample Type</b>	<b>Monitoring Frequency</b>	<b>Statistical Base</b>
00610	Nitrogen, Ammonia total (as N)	<=	5.3	lb/d	Composite	Weekly	Monthly Average
00610	Nitrogen, Ammonia total (as N)	<=	4.2	mg/L	Composite	Weekly	Daily Maximum
00610	Nitrogen, Ammonia total (as N)	<=	8	lb/d	Composite	Weekly	Weekly Average
00610	Nitrogen, Ammonia total (as N)	<=	2.1	mg/L	Composite	Weekly	Monthly Average
00610	Nitrogen, Ammonia total (as N)	<=	3.2	mg/L	Composite	Weekly	Weekly Average
80082	CBOD, 5-day, 20 C	<=	30	mg/L	Composite	Weekly	Daily Maximum
80082	CBOD, 5-day, 20 C	<=	50	lb/d	Composite	Weekly	Monthly Average
80082	CBOD, 5-day, 20 C	<=	25	mg/L	Composite	Weekly	Weekly Average
80082	CBOD, 5-day, 20 C	<=	20	mg/L	Composite	Weekly	Monthly Average
80082	CBOD, 5-day, 20 C	<=	62.6	lb/d	Composite	Weekly	Weekly Average
<b>Description: External Outfall, Number: 001, Monitoring: Effluent Gross, Season: Winter, Limit Set Status: Compliance Schedule, Effective January 1, 2025</b>							
<b>Code</b>	<b>Parameter</b>	<b>Qualifier</b>	<b>Value</b>	<b>Unit</b>	<b>Sample Type</b>	<b>Monitoring Frequency</b>	<b>Statistical Base</b>
00610	Nitrogen, Ammonia total (as N)	<=	5.3	lb/d	Composite	Weekly	Weekly Average
00610	Nitrogen, Ammonia total (as N)	<=	3.5	lb/d	Composite	Weekly	Monthly Average
00610	Nitrogen, Ammonia total (as N)	<=	2.1	mg/L	Composite	Weekly	Weekly Average
00610	Nitrogen, Ammonia total (as N)	<=	2.8	mg/L	Composite	Weekly	Daily Maximum
00610	Nitrogen, Ammonia total (as N)	<=	1.4	mg/L	Composite	Weekly	Monthly Average
<b>Description: External Outfall, Number: 001, Monitoring: Percent Removal, Season: All Year, Limit Set Status: Active</b>							
<b>Code</b>	<b>Parameter</b>	<b>Qualifier</b>	<b>Value</b>	<b>Unit</b>	<b>Sample Type</b>	<b>Monitoring Frequency</b>	<b>Statistical Base</b>
80358	CBOD, 5-day, 20 C, % removal	>=	85	%	Composite	Weekly	Average (Minimum)
80358	CBOD, 5-day, 20 C, % removal	>=	40	%	Composite	Weekly	Daily Minimum
81011	TSS, % removal	>=	85	%	Composite	Weekly	Average (Minimum)
81011	TSS, % removal	>=	40	%	Composite	Weekly	Daily Minimum

Description: Influent Structure, Number: INF1, Monitoring: Raw Sewage Influent, Season: All Year, Limit Set Status: Active							
<u>Code</u>	<u>Parameter</u>	<u>Qualifier</u>	<u>Value</u>	<u>Unit</u>	<u>Sample Type</u>	<u>Monitoring Frequency</u>	<u>Statistical Base</u>
00530	Total Suspended Solids (TSS)	Report	-	mg/L	Composite	Weekly	Daily Maximum
00530	Total Suspended Solids (TSS)	Report	-	mg/L	Composite	Weekly	Monthly Average
50050	Flow	Report	-	MGD	Continuous	Daily	Daily Maximum
50050	Flow	Report	-	MGD	Continuous	Daily	Monthly Average
80082	CBOD, 5-day, 20 C	Report	-	mg/L	Composite	Weekly	Daily Maximum
80082	CBOD, 5-day, 20 C	Report	-	mg/L	Composite	Weekly	Monthly Average

**EFFLUENT LIMITATIONS** table from WaterLog here. Remove hyperlinks from table headings. Delete unnecessary columns. Adjust so looks professional and presentable.

General <u>MyTDEC Forms</u> Report Requirements*	
Bypass of Treatment Facility	See Section 1.3.5.1. and 2.3.5.
Anticipated Bypass of Treatment Facility	See Section 1.3.5.1. and 2.3.5.
Five-day Follow-up Noncompliance Report	See Sections 1.3.5.1. and 2.3.1.a.
Scheduled Reporting	See Section 2.3.1.b.

\* Each event shall be reported via MyTDEC Forms.

Notes:

The permittee shall achieve 85% removal of CBOD<sub>5</sub> and TSS on a monthly average basis. The permittee shall report all instances of releases, overflows and/or bypasses. See **Part 2.3.2(a)** for the definition of overflow and **Part 1.3.5** for reporting requirements.

Calculations for all limitations which require averaging of measurements shall utilize an arithmetic mean unless otherwise specified in the permit.

Unless elsewhere specified, summer months are May through October; winter months are November through April.

See **Part 1.2.3** for test procedures.

See below for percent removal calculations.

The permittee may collect more samples than specified as the monitoring frequency in the permit. Samples may not be collected at intervals of less than 12 hours. For the purpose of determining the geometric mean, individual samples having an *E. coli* group concentration of less than 1 per 100 mL shall be considered as having a concentration of 1 per 100 mL. In

addition, the concentration of the *E. coli* group in any individual sample shall not exceed a specified maximum amount.

For CBOD<sub>5</sub> and TSS, the treatment facility shall demonstrate a minimum of 85% removal efficiency on a monthly average basis. This is calculated by determining an average of all daily influent concentrations and comparing this to an average of all daily effluent concentrations. The formula for this calculation is as follows:

$$\left(1 - \frac{\text{average of daily effluent concentrations}}{\text{average of daily influent concentrations}}\right) * 100\% = \% \text{ removal}$$

This treatment facility will also demonstrate 40% daily minimum removal of CBOD<sub>5</sub> and TSS based on each daily composite sample. The formula for this calculation is as follows:

$$\left(1 - \frac{\text{daily effluent concentration}}{\text{daily influent concentration}}\right) * 100\% = \% \text{ removal}$$

Monitoring and reporting requirements for both total nitrogen (TN) and total phosphorus (TP) begin the effective date of the permit.

Each daily load is calculated by multiplying the day's sample concentration (mg/L) by the effluent flow rate (MGD) for the day the sample was collected and the conversion factor 8.34 lbs/gal.

$$\text{Load} = \left(\frac{\text{Effluent Concentration}}{\text{Concentration}}\right) * \left(\frac{\text{Effluent flow for the day}}{\text{day the sample was collected}}\right) * (8.34)$$

The average pound per day is the mathematical average where the sum of all the calculated loads during the current month and previous 11 months is divided by the number of calculated loads.

$$\text{Average Pounds per Day} = \left(\frac{\text{Sum of All Loads in } \frac{\text{lbs}}{\text{day}} \text{ During the Current Month and the Previous 11 Months}}{\text{Total Number of Loads Calculated During the Current Month and Previous 11 Months}}\right)$$

The annual rolling load (lb/year) for the current month is calculated and reported monthly using the data from the current month and previous 11 months. Each annual rolling load is calculated by multiplying the average of all sample loads for the current month and the previous 11 months by 365 days.

$$\text{Annual Rolling Load} = \left(\frac{\text{Sum of All Loads in } \frac{\text{lbs}}{\text{day}} \text{ During the Current Month and Previous 11 Months}}{\text{Total Number of Loads Calculated During the Current Month and Previous 11 Months}}\right) * (365)$$

### 1.1.2. Collection System Requirements

Town of Alexandria is authorized to operate a sewage collection system. Operation and discharges from the collection system shall be limited and monitored by the permittee as specified below:

Code	Monitoring	Parameter	Qualifier	Value	Unit	Sample Type	Monitoring Frequency	Statistical Base
51925	Dry Weather	SSO, Dry Weather	<=	0	occur/mo	Occurrences	Continuous	Monthly Total
51926	Wet Weather	SSO, Wet Weather	<=	0	occur/mo	Occurrences	Continuous	Monthly Total

Report via NetDMR. See sections **1.3.1.** and **1.3.5.2.**

<b>Collection System <u>MyTDEC Forms</u> Report Requirements*</b>	
Sanitary Sewer Overflow (SSO, Dry Weather)	See Section 1.3.5.1.
Sanitary Sewer Overflow (SSO, Wet Weather)	See Section 1.3.5.1.
Release (Dry Weather)	See Section 1.3.5.1.
Release (Wet Weather)	See Section 1.3.5.1.
Five-day Follow-up Noncompliance Report	See Sections 1.3.5.1. and 2.3.1.

\* Each event shall be reported via MyTDEC Forms.

### 1.1.3. Narrative Conditions

<b>Status</b>	<b>Schedule Event Description</b>	<b>Comments</b>
Active - Permit Requirement	Industrial User Survey	The permittee shall submit the results of an Industrial Waste Survey (IWS) to the Division of Water Resources, Pretreatment Section within 120 days of the effective date of this permit, unless such a survey has been submitted within 3 years of the effective date. If an IWS has been submitted within the past 3 years, the permittee shall notify the Division of the date when the IWS was previously submitted to the Division. The IWS shall be submitted to the following email address: DWRWater.Compliance@tn.gov.
Active - Permit Requirement	Compliance Schedule	Submit a report to Water.Permits@tn.gov detailing the following: -Activities necessary to achieve compliance with the ammonia limits -Completion or projected completion dates of each activity.



The authorized discharge shall not:

- Result in distinctly visible solids, scum, foam, oily slick, or the formation of slimes, bottom deposits, or sludge banks of such size or character as may be detrimental to fish and aquatic life.
- Result in total suspended solids, turbidity, or color in such amounts or character that will result in any objectionable appearance to the receiving water, considering the nature and location of the water.
- Contain pollutants in quantities that will be hazardous or otherwise detrimental to humans, livestock, wildlife, plant life, or fish and aquatic life in the receiving stream.

Sludge or any other material removed by any treatment works must be disposed of in a manner that prevents its entrance into or pollution of any surface or subsurface waters. Additionally, the disposal of such sludge or other material must be in compliance with the Tennessee Solid Waste Disposal Act, Tennessee Code Annotated (Tenn. Code Ann.) §68-31-101 et seq. and the Tennessee Hazardous Waste Management Act, Tenn. Code Ann. §68-46-101 et. seq.

## **1.2. MONITORING PROCEDURES**

### **1.2.1. Representative Sampling**

Samples and measurements taken in compliance with the monitoring requirements specified herein shall be representative of the volume and nature of the monitored discharge and shall be taken after treatment and prior to mixing with uncontaminated stormwater runoff or the receiving stream. Appropriate flow measurement devices and methods consistent with accepted scientific practices shall be selected and used to ensure the accuracy and reliability of measurements of the volume of monitored discharges. The devices shall be installed and calibrated by a qualified source at least once every 12 months<sup>1</sup>, and maintained to ensure that the accuracy of the measurements is consistent with accepted capability of that type of device. Devices selected shall be capable of measuring flows with a maximum deviation of plus or minus 10% from the true discharge rates throughout the range of expected discharge volumes.

Composite samples must be proportioned by flow at the time of sampling. Aliquots may be collected manually or automatically. The sample aliquots must be maintained at  $\leq 6^{\circ}\text{C}$  during the compositing period, or as otherwise specified in 40 CFR §136 or in the method.

---

<sup>1</sup> The Division expects for permittees to meet EPA's guidance on proper operation and maintenance of flow measurement devices, as stated in the [NPDES Compliance Inspection Manual](#).

Samples and measurements taken in compliance with the monitoring requirements specified above shall be representative of the volume and nature of the monitored discharge, and shall be taken at the following location(s):

**Influent samples** must be collected prior to mixing with any other wastewater being returned to the head of the plant, such as sludge return. Those systems with more than one influent line must collect samples from each and proportion the results by the flow from each line.

**Effluent samples** must be representative of the wastewater being discharged and collected prior to mixing with any other discharge or the receiving stream. This can be a different point for different parameters but must be after all treatment for that parameter or all expected changes. Specifically:

- a) The chlorine residual must be measured after the chlorine contact chamber and any dechlorination. It may be to the advantage of the permittee to measure at the end of any long outfall lines.
- b) Samples for *E. coli* can be collected at any point between completion of disinfection and the actual discharge.
- c) The dissolved oxygen (DO) can drop in the outfall line; therefore, DO measurements are required at the discharge end of outfall lines greater than one mile long. Systems with outfall lines less than one mile may measure dissolved oxygen as the wastewater leaves the treatment facility. For systems with dechlorination, DO must be measured after this step and as close to the end of the outfall line as possible.
- d) Total suspended solids (TSS) and settleable solids can be collected at any point after the final clarifier.
- e) Biomonitoring tests (if required) shall be conducted on final effluent.

### **1.2.2. Sampling Frequency**

The permittee should report "No Discharge" on Discharge Monitoring Reports (DMRs) only if a permitted outfall does not discharge at any time during the monitoring period. If the outfall discharges effluent at any time during the monitoring period, the permittee must provide at least one sampling result from the effluent of that outfall.



If the required monitoring frequency is once per month or 1/month, the monitoring period is one month. If the discharge occurs during only one day in that period, the permittee must sample on that day and report the results of analyses accordingly.

### **1.2.3. Test Procedures**

- a) Test procedures for the analysis of pollutants shall conform to regulations published pursuant to Section 304 (h) of the Clean Water Act (the "Act"), as amended, under which such procedures may be required.
- b) Unless otherwise noted in the permit, all pollutant parameters shall be determined using sufficiently sensitive methods in Title 40 CFR § 136, as amended, and promulgated pursuant to Section 304 (h) of the Act. The chosen methods must be sufficiently sensitive as required in state rule 0400-40-03-.05(8).
- c) If the minimum level of quantification (ML) for all methods available in accordance with 40 CFR § 136 are above the stated permit limit or applicable water quality criteria for that parameter, then the method with the lowest ML shall be used.
- d) Where the analytical results are below the method detection limit (MDL), the permittee shall report the actual laboratory MDL and ML values. See **Section 1.3.6.** for instructions regarding reporting less than detection.
- e) When there is no analytical method that has been approved under 40 CFR §136 or required under 40 CFR chapter I, subchapter N or O, and a specific method is not otherwise required by the Director, the permittee may use any suitable method but shall provide a description of the method. When selecting a suitable method, factors such as a method's precision, accuracy, or resolution must be considered when assessing the performance of the method.

### **1.2.4. Recording of Results**

For each measurement or sample taken pursuant to the requirements of this permit, the permittee shall record the following information:

- i. The date, exact place, and time of sampling or measurements;
- ii. The individual(s) who performed the sampling or measurements;
- iii. The date analyses were performed;
- iv. The individual(s) who performed the analyses;





- v. The laboratory where the analyses were performed;
- vi. The analytical techniques or methods used; and
- vii. The results of such analyses.

### **1.2.5. Records Retention**

The permittee shall retain records of all monitoring information, including all calibration and maintenance records and all original strip chart recordings for continuous monitoring instrumentation, copies of all reports required by this permit, and records of all data used to complete the application for this permit, for a period of at least 3 years from the date of the sample, measurement, report or application. This period may be extended by request of the Director at any time.

## **1.3. REPORTING**

### **1.3.1. Monitoring Results**

Monitoring results shall be recorded monthly and submitted monthly on Discharge Monitoring Reports (DMRs) using EPA's NetDMR website. The first DMR is due on the 15th of the month following permit effectiveness. Subsequent DMRs shall be submitted through NetDMR no later than 15 days after the completion of the reporting period. In compliance with the Federal NPDES Electronic Reporting Rule, DMRs may not be submitted via email under any circumstances.

Discharge Monitoring Reports and any other information or report must be signed and certified by a responsible corporate officer as defined in Tennessee Rules, Chapter 0400-40-05-.07(2)(i), a general partner or proprietor, a principal municipal executive officer or ranking elected official, or his or her duly authorized representative. Such authorization must be submitted in writing and must explain the duties and responsibilities of the authorized representative.

In the event that electronic reporting is unavailable, the permittee shall comply with reporting conditions provided in **Section 1.7**.

### **1.3.2. Additional Monitoring by Permittee**

If the permittee monitors any pollutant more frequently than required by the permit using test procedures approved under 40 CFR § 136, or as specified in the permit, the results of this monitoring shall be included in the calculation and reporting of the data submitted in the DMR or other reporting form specified by the Commissioner. Such increased frequency shall also be indicated.



### **1.3.3. Falsifying Results and/or Reports**

Knowingly making any false statement on any report required by this permit or falsifying any result may result in the imposition of criminal penalties as provided for in Section 309 of the Federal Water Pollution Control Act, as amended, and in § 69-3-115 of the Tennessee Water Quality Control Act.

### **1.3.4. Monthly Report of Operation**

Monthly Operational Reports (MORs) shall be submitted by the 15<sup>th</sup> day of the month following data collection. Reports shall be submitted by one of the following methods, presented below in order of preference:

- 1) Using MyTDEC Forms, if available.
- 2) Submitting both a signed and certified copy in pdf format, uploaded as an attachment to NetDMR, *and* a copy of the native format spreadsheet file emailed to DWRWW.Report@tn.gov and TDEC.Cookeville.EFO@tn.gov.
- 3) Submitting signed and certified forms to the EFO at the following address:

*STATE OF TENNESSEE  
DEPARTMENT OF ENVIRONMENT AND CONSERVATION  
DIVISION OF WATER RESOURCES  
Cookeville Environmental Field Office  
1221 South Willow Avenue  
Cookeville, Tennessee 38506*

### **1.3.5. Overflow, Release, and Bypass Reporting**

#### **1.3.5.1. Event Report Requirements**

For the purpose of this section, “events” are known as instances of sanitary sewer overflows, releases, upsets, and bypasses. These events shall be reported through MyTDEC Forms according to the following conditions:

- a) Events that are not a threat to human health and the environment shall be reported using MyTDEC Forms no later than 15 days following the completion of the DMR reporting period.
- b) Events that could cause a threat to human health or the environment, as defined in **Section 2.3.1.a.**, shall be reported using MyTDEC Forms no later than 5 days after becoming aware of the non-compliance.



In both cases, the event report must contain the following:

- i. Start date;
- ii. Estimated duration in hours;
- iii. Estimated volume in gallons;
- iv. Type of event;
- v. Type of structure (e.g., manhole);
- vi. Types of human health and environmental impacts;
- vii. Location (i.e., latitude and longitude);
- viii. The name of receiving water (if applicable);
- ix. Description of the cause;
- x. The steps being taken to correct, reduce, eliminate, and prevent recurrence of the noncompliance; and
- xi. The next downstream pump/lift station using the permittee's naming conventions.

In the event that MyTDEC Forms is not functioning, the permittee shall comply with reporting conditions provided in **Section 1.7**.

#### **1.3.5.2. DMR Report Requirements**

On the DMR, the permittee must separately report:

- i. The total number of sanitary sewer overflows for the reporting month; and
- ii. The total number of dry-weather sanitary sewer overflows for the reporting month.

On the DMR, sanitary sewer overflows are coded "SSO, Dry Weather" and "SSO, Wet Weather". Each discrete location of a sanitary sewer overflow shall be reported as a separate value.

#### **1.3.6. Reporting Less Than Detection; Reporting Significant Figures**

For the purpose of evaluating compliance with the permit limits established herein, where certain limits are below the minimum level (ML) of 40 CFR § 136 approved analytical methods, compliance will be demonstrated when a non-detect result is obtained using the most sensitive method available. The results of non-detect analyses, in this case, shall be reported as Below Detection Limit (BDL) or "NODI = B" in NetDMR. Reporting examples are provided below.

Reporting Example 1: If the permit limit is 0.02 mg/L with a method detection limit (MDL) of 0.05 mg/L and no detection is shown, the permittee must report "BDL" or "NODI = B" on DMRs in NetDMR. Whenever "BDL" or "NODI = B" is



reported, the actual MDL must be reported in the DMR comments or in an attachment submitted in NetDMR.

Reporting Example 2: If the permit limit is 0.02 mg/L with an MDL of 0.05 mg/L and detection is shown, the actual detected value must be reported.

Reporting Example 3: If the permit limit is 0.02 mg/L with an MDL of 0.01 mg/L and no detection is shown, the permittee must report less than MDL (<0.01 mg/L in this case).

For purposes of calculating averages, zero may be assigned for values less than the MDL, the numeric value of the MDL may be assigned for values between the MDL and the ML. If the average value is less than the MDL, the permittee must report "less than {numeric value of the MDL}" and if the average value is less than the ML, the permittee must report "less than {numeric value of the ML}." If a value is equal to or greater than the ML, the permittee must report and use the actual value. The resulting average value must be compared to the compliance level, the ML, in assessing compliance.

Reported results are to correspond to the number of significant figures (decimal places) set forth in the permit conditions. The permittee shall round values, if allowed by the method of sample analysis, using a uniform rounding convention adopted by the permittee.

### **1.3.7. Outlier Data**

Outlier data include analytical results that are probably false. The validity of results is based on operational knowledge and a properly implemented quality assurance program. False results may include laboratory artifacts, potential sample tampering, broken or suspect sample containers, sample contamination or similar demonstrated quality control flaw.

Outlier data are identified through a properly implemented quality assurance program, and according to ASTM standards (e.g. Grubbs Test, 'h' and 'k' statistics). Furthermore, outliers should be verified, corrected, or removed based on further inquiries into the matter. If an outlier was verified (through repeated testing and/or analysis), it should remain in the preliminary data set. If an outlier resulted from a transcription or similar clerical error, it should be corrected and subsequently reported.

Therefore, only if an outlier was associated with problems in the collection or analysis of the samples and as such does not conform with the Guidelines



Establishing Test Procedures for the Analysis of Pollutants (40 CFR §136), can it be removed from the data set and not reported on DMRs. Otherwise, all results (including monitoring of pollutants more frequently than required at the location(s) designated, using approved analytical methods as specified in the permit) should be included in the calculation and reporting of the values required in the DMR form. The permittee should use the “comment” section in NetDMR to explain any potential outliers or dubious results.

#### **1.4. COMPLIANCE WITH SECTION 208**

The limits and conditions in this permit shall require compliance with an area-wide waste treatment plan (208 Water Quality Management Plan) where such approved plan is applicable.

#### **1.5. REOPENER CLAUSE**

This permit shall be modified, or alternatively revoked and reissued, to comply with any applicable effluent standard or limitation issued or approved under Sections 301(b)(2)(C) and (D), 307(a)(2), and 405(d)(2)(D) of the Clean Water Act, as amended, if the effluent standard, limitation, or sludge disposal requirement so issued or approved:

- a) Contains different conditions or is otherwise more stringent than any condition in the permit; or
- b) Controls any pollutant or disposal method not addressed in the permit.

The permit as modified or reissued under this paragraph shall also contain any other requirements of the Act then applicable.

#### **1.6. SCHEDULE OF COMPLIANCE**

Full compliance and operational levels for all parameters except ammonia shall be attained from the effective date of this permit. The permit limits of 0.7 mg/l and 1.4 mg/l (summer) and 1.4 mg/l and 2.8 mg/l (winter) for ammonia will become effective on January 1, 2025. By December 31, 2024, the permittee shall submit a report to [Water.Permits@tn.gov](mailto:Water.Permits@tn.gov) detailing the following:

- Activities necessary to achieve compliance with the ammonia limits.
- Completion or projected completion dates of each activity.

## 1.7. ELECTRONIC REPORTING

This permit requires the submission of forms developed by the Director in order for a person to comply with certain requirements, including, but not limited to, making reports, submitting monitoring results, and applying for permits. The Director may make these forms available electronically and, if submitted electronically, then that electronic submission shall comply with the requirements of Chapter 0400-01-40. Electronic submission is required when available unless waived by the Commissioner in accordance with 40 C.F.R. § 127.15.

In the event of large-scale emergencies and/or prolonged electronic reporting system outages, an episodic electronic reporting waiver may be granted by the Commissioner in accordance with 40 CFR § 127.15. A request for a deadline extension or episodic electronic reporting waiver should be submitted to [DWRWater.Compliance@tn.gov](mailto:DWRWater.Compliance@tn.gov), in compliance with the Federal NPDES Electronic Reporting Rule.

If an episodic electronic reporting waiver is granted, reports with wet-ink original signatures shall be mailed to the following address:

*STATE OF TENNESSEE  
DEPARTMENT OF ENVIRONMENT AND CONSERVATION  
DIVISION OF WATER RESOURCES  
COMPLIANCE & ENFORCEMENT UNIT  
William R. Snodgrass - Tennessee Tower  
312 Rosa L. Parks Avenue, 11th Floor  
Nashville, Tennessee 37243-1102*

For purposes of determining compliance with this permit, data provided to the Division electronically is legally equivalent to data submitted on signed and certified forms. A copy must be retained for the permittee's files.

## PART 2

---

### **2. GENERAL PERMIT REQUIREMENTS**

#### **2.1. GENERAL PROVISIONS**

##### **2.1.1. Duty to Comply**

The permittee shall comply with all conditions of this permit. Any permit noncompliance constitutes a violation of the Act and is grounds for enforcement action; for permit termination, revocation and reissuance, or modification; or denial of a permit renewal application.

##### **2.1.2. Duty to Reapply**

The permittee is not authorized to discharge after the expiration date of this permit. In order to receive authorization to discharge beyond the expiration date, the permittee shall submit such information and forms as are required to the Division Director no later than 180 days prior to the expiration date. Such forms shall be properly signed and certified.

##### **2.1.3. Proper Operation and Maintenance**

- a) The permittee shall at all times properly operate and maintain all facilities and systems of treatment and control (and related appurtenances, including but not limited to collection and conveyance systems) which are installed or used by the permittee to achieve compliance with the conditions of this permit. Low pressure pumps, low pressure tanks, septic tank effluent pumps (STEP), STEP tanks, and septic tank effluent gravity tanks are integral to the treatment and conveyance of sewage in a low-pressure system design, and shall be owned or under control of the municipality, other body of government, public utility district, or a privately-owned public utility demonstrating lawful jurisdiction over the service area. Proper operation and maintenance also includes adequate laboratory controls and appropriate quality assurance procedures. This provision requires the operation of backup or auxiliary facilities or similar systems, which are installed by a permittee only when the operation is necessary to achieve compliance with the conditions of the permit.
- b) Dilution water shall not be added to comply with effluent requirements to achieve BCT, BPT, BAT, or other technology based effluent limitations such as those established in Tennessee Rule 0400-40-05-.09.



**2.1.4. Duty to Provide Information**

The permittee shall also furnish to the Director, upon request, copies of records required to be kept by this permit.

**2.1.5. Right of Entry**

The permittee shall allow the Director, the Regional Administrator of the U.S. Environmental Protection Agency, or their authorized representatives, upon the presentation of credentials, to:

- a) Enter upon the permittee's premises where a regulated facility or activity is located or conducted, or where records shall be kept under the conditions of this permit;
- b) Have access to and copy, at reasonable times, any records that shall be kept under the conditions of this permit;
- c) Inspect at reasonable times any facilities, equipment (including monitoring and control equipment), practices, or operations regulated or required under this permit; and
- d) Sample or monitor at reasonable times for the purposes of assuring permit compliance or as otherwise authorized by the Director.

**2.1.6. Availability of Reports**

Except for data determined to be confidential under Section 308 of the Federal Water Pollution Control Act, as amended, all reports prepared in accordance with the terms of this permit shall be available for public inspection at the Division's offices or via the Department's [dataviewer webpage](#). As required by the Federal Act, effluent data shall not be considered confidential.

**2.1.7. Treatment Facility Failure (Industrial Sources)**

The permittee, in order to maintain compliance with this permit, shall control production, all discharges, or both, upon reduction, loss, or failure of the treatment facility until the facility is restored or an alternative method of treatment is provided. This requirement applies in such situations as the reduction, loss, or failure of the primary source of power.

**2.1.8. Property Rights**

The issuance of this permit does not convey any property rights in either real or personal property, or any exclusive privileges, nor does it authorize any injury to





private property or any invasion of personal rights, nor any infringement of federal, state, or local laws or regulations.

#### **2.1.9. Severability**

The provisions of this permit are severable. If any provision of this permit due to any circumstance is held invalid, then the application of such provision to other circumstances and to the remainder of this permit shall not be affected thereby.

#### **2.1.10. Other Information**

If the permittee becomes aware of failure to submit any relevant facts in a permit application, or of submission of incorrect information in a permit application or in any report to the Director, then the permittee shall promptly submit such facts or information.

### **2.2. CHANGES AFFECTING THE PERMIT**

#### **2.2.1. Planned Changes**

The permittee shall give notice to the Director as soon as possible of any planned physical alterations or additions to the permitted facility. Notice is required only when:

- a) The alteration or addition to a permitted facility may meet one of the criteria for determining whether a facility is a new source as defined in Rule 0400-40-05-.02;
- b) The alteration or addition could significantly change the nature or increase the quantity of pollutants discharged. This notification applies to pollutants which are subject neither to effluent limitations in the permit nor to notification requirements under 40 CFR § 122.42(a)(1); or
- c) The alteration or addition results in a significant change in the permittee's sludge use or disposal practices.

#### **2.2.2. Permit Modification, Revocation, or Termination**

- a) This permit may be modified, revoked and reissued, or terminated for cause as described in 40 CFR § 122.62 and § 122.64, Federal Register, Volume 49, No. 188 (Wednesday, September 26, 1984), as amended. Causes for such permit action include but are not limited to the following:
  - i. Violation of any terms or conditions of the permit;



- ii. Obtaining a permit by misrepresentation or failure to disclose fully all relevant facts; and
  - iii. A change in any condition that requires either a temporary or permanent reduction or elimination of the permitted discharge.
- b) The permittee shall furnish to the Director, within a reasonable time, any information which the Director may request to determine whether cause exists for modifying, revoking and reissuing, or terminating this permit, or to determine compliance with this permit.
- c) If any applicable effluent standard or prohibition (including any schedule of compliance specified in such effluent standard or prohibition) is established for any toxic pollutant under Section 307(a) of the Federal Water Pollution Control Act, as amended, the Director shall modify or revoke and reissue the permit to conform to the prohibition or to the effluent standard, providing that the effluent standard is more stringent than the limitation in the permit for the toxic pollutant. The permittee shall comply with these effluent standards or prohibitions within the time provided in the regulations that establish these standards or prohibitions, even if the permit has not yet been modified or revoked and reissued to incorporate the requirement.
- d) The filing of a request by the permittee for a modification, revocation, reissuance, termination, or notification of planned changes or anticipated noncompliance does not halt any permit condition.

### **2.2.3. Change of Ownership**

Except as provided in Tennessee Rule Chapter 0400-40-05-.06(5)(a) or (b), this permit may be transferred to another party (provided there are neither modifications to the facility or its operations, nor any other changes which might affect permit limits and conditions contained in the permit) by the permittee if:

- a) The permittee notifies the Director of the proposed transfer at least 30 days in advance of the proposed transfer date;
- b) The notice includes a written agreement between the existing and new permittees containing a specified date for transfer of permit responsibility, coverage, and liability between them; and
- c) The permittee shall provide the following information to the Director in the permittee's formal notice of intent to transfer ownership:

- i. The permit number of the subject permit;
- ii. The effective date of the proposed transfer;
- iii. The name, address, and contact information of the transferor;
- iv. The name, address, and contact information of the transferee;
- v. The names of the responsible parties for both the transferor and transferee;
- vi. A statement that the transferee assumes responsibility for the subject permit;
- vii. A statement that the transferor relinquishes responsibility for the subject permit;
- viii. The signatures of the responsible parties for both the transferor and transferee pursuant to the signatory requirements of subparagraph (i) of Rule 0400-40-05-.07(2); and
- ix. A statement regarding any proposed modifications to the facility, its operations, or any other changes, which might affect the permit, limits and conditions contained in the permit.

#### **2.2.4. Change of Mailing Address**

The permittee shall promptly provide to the Director written notice of any change of mailing address. In the absence of such notice, the original address of the permittee will be assumed to be correct.

### **2.3. NONCOMPLIANCE**

#### **2.3.1. Reporting of Noncompliance**

- a) 24-hour Reporting:

In the case of any noncompliance, or any release (whether or not caused by improper operation and maintenance), which could cause a threat to human health or the environment, the permittee shall:

- i. Report the noncompliance or release to the Commissioner within 24 hours from the time the permittee becomes aware of the circumstances. Such noncompliance or release includes, but is not limited to, any unanticipated bypass exceeding any effluent limitation, any upset exceeding any effluent limitation, and violations of any maximum daily effluent limitation identified in the permit as requiring 24-hour reporting. (The EFO should be contacted for names and phone numbers of the environmental response team.)

- ii. Submit a written report within five days of the time the permittee becomes aware of the noncompliance. The permittee shall provide the following information:
    1. A description of and the cause of the noncompliance or release;
    2. The period of noncompliance or release, including start and end dates and times i.e. duration or, if not corrected, the anticipated time the noncompliance or release is expected to continue;
    3. The steps being taken to reduce, eliminate, and prevent recurrence of the noncompliance or release; and
    4. For POTWs or domestic wastewater treatment plants, reporting any dry weather overflow, wet weather overflow, dry weather release, wet weather release, combined sewer overflow, or bypass, this written report must also include the following:
      - I. Type of event;
      - II. Type of sewer overflow, release, or bypass structure (e.g., manhole, combined sewer overflow outfall);
      - III. Estimated volume (gallons);
      - IV. Types of human health and environmental impacts;
      - V. Location (latitude and longitude);
      - VI. Estimated duration (hours);
      - VII. The next downstream pump station (for overflows and releases only); and
      - VIII. The name of receiving water (if applicable).
  - iii. Industrial dischargers that do not treat domestic waste shall comply with subpart a) ii. 4. of this subparagraph with respect to bypasses only.
  - iv. For overflows, releases, bypasses, upsets and washouts, the report required by a) ii. Shall be submitted electronically via MyTDEC Forms.
- b) Other Noncompliance.
- i. All permittees shall report each instance of noncompliance or any release (whether or not caused by improper operation and maintenance), not reported under sub-part a) at the time of submitting the next routine monitoring report, including all information required by sub-parts a) ii. 1-3.

- ii. In addition to the information required by part i of this sub-part, POTWs and domestic wastewater treatment plants shall submit a written report containing the information required by sub-part a) i. 4. If these events are caused by an extreme weather event, the Commissioner may provide a written waiver of some or all of these reporting requirements.
- iii. In addition to the information required by sub-part i, industrial dischargers shall submit a written report of bypasses containing the information required by sub-part a) i. 4. This part does not relieve industrial dischargers from any applicable reporting requirements of 40 C.F.R. Part 117 (2021) and 40 C.F.R. Part 302 (2021).

### **2.3.2. Overflows and Releases**

- a) For publicly owned treatment works (POTW) or domestic wastewater treatment plants, sanitary sewer overflows, including dry-weather overflows and wet weather overflows, are prohibited.
- b) Releases caused by improper operation and maintenance, which is to be determined by the Commissioner based on the totality of the circumstances, are prohibited.
- c) The permittee shall operate the collection, transmission, and treatment system so as to avoid sanitary sewer overflows and releases due to improper operation or maintenance. A “release” may be due to improper operation or maintenance of the collection system or may be due to other cause(s).
- d) The permittee shall take all reasonable steps to minimize any adverse impact associated with overflows and releases.
- e) No new or additional flows shall be added upstream of any point in the collection, transmission, or treatment system that experiences greater than 5 sanitary sewer overflows and/or releases per year<sup>2</sup> or would otherwise overload any portion of the system. Unless there is specific enforcement action to the contrary, the permittee is relieved of this requirement after:
  - 1) An authorized representative of the Commissioner of the Department of Environment and Conservation has approved an engineering report

---

<sup>2</sup> This includes dry weather overflows, wet weather overflows, dry weather releases and wet weather releases.

and construction plans and specifications prepared in accordance with accepted engineering practices for correction of the problem;

- 2) The correction work is underway; and
- 3) The cumulative, peak-design flows potentially added from new connections and line extensions upstream of any chronic overflow or release point are less than or proportional to the amount of inflow and infiltration removal documented upstream from that point.

The inflow and infiltration reduction must be measured by the permittee using practices that are customary in the environmental engineering field and reported in an attachment to the permittee's DMR and uploaded to NetDMR. The data measurement period shall be sufficient to account for seasonal rainfall patterns and seasonal groundwater table elevations.

- f) In the event that chronic sanitary sewer overflows or releases have occurred from a single point in the collection system for reasons that may not warrant the self-imposed moratorium of the actions identified in this paragraph, the permittee may request a meeting with Division EFO staff to petition for a waiver based on mitigating evidence.
- g) For industrial dischargers, the discharge of pollutants from any location other than a permitted outfall is prohibited.

### **2.3.3. Upset**

- a) An upset shall constitute an affirmative defense to an action brought for noncompliance with technology-based permit effluent limitations if the permittee demonstrates, through properly signed, contemporaneous operating logs, or other relevant evidence that:
  - i. An upset occurred and that the permittee can identify the cause(s) of the upset;
  - ii. The permitted facility was at the time being operated in a prudent and workman-like manner and in compliance with proper operation and maintenance procedures;
  - iii. The permittee submitted information required under "Reporting of Noncompliance" within 24 hours of becoming aware of the upset (if this information is provided orally, a written submission must be provided within five days); and
  - iv. The permittee complied with any remedial measures required under "Adverse Impact".



- b) In any enforcement proceeding, the permittee seeking to establish the affirmative defense of an upset has the burden of proof.

#### **2.3.4. Adverse Impact**

The permittee shall take all reasonable steps to minimize any adverse impact to the waters of Tennessee resulting from noncompliance with this permit, including such accelerated or additional monitoring as necessary to determine the nature and impact of the noncomplying discharge. It shall not be a defense for the permittee in an enforcement action that it would have been necessary to halt or reduce the permitted activity in order to maintain compliance with the conditions of this permit.

#### **2.3.5. Bypass**

- a) Bypasses (see subpart 4.1) are prohibited unless all the following conditions are met:
  - i. The bypass is unavoidable to prevent loss of life, personal injury, or severe property damage;
  - ii. There are no feasible alternatives to bypass, such as the use of auxiliary treatment facilities, retention of untreated wastes, or maintenance during normal periods of equipment downtime. This condition is not satisfied if adequate back-up equipment should have been installed in the exercise of reasonable engineering judgment to prevent a bypass which occurred during normal periods of equipment downtime or preventative maintenance; and
    - a. For anticipated bypass, the permittee submits prior notice, if possible at least ten days before the date of the bypass, or
    - b. For unanticipated bypass, the permittee submits notice of an unanticipated bypass within 24 hours from the time that the permittee becomes aware of the bypass.
- b) Bypasses that do not cause effluent limitations to be exceeded may be allowed only if the bypass is necessary for essential maintenance to assure efficient operation. The permittee must sample and report the discharge during each bypass to demonstrate that the bypass does not cause effluent limitations to be exceeded.

#### **2.3.6. Washout**

- a) For domestic wastewater plants only, a "washout" shall be defined as loss of Mixed Liquor Suspended Solids (MLSS) of 30.00% or more. This refers to the MLSS in the aeration basin(s) only. This does not include MLSS decreases due

to solids wasting to the sludge disposal system. A washout can be caused by improper operation or from peak flows due to inflow and infiltration.

- b) A washout is prohibited. If a washout occurs the permittee must report the incident to the Division in the appropriate EFO within 24 hours by telephone. A written submission must be provided within five days. The washout must be noted on that month's DMR. Each day of a washout is a separate violation.

## **2.4. LIABILITIES**

### **2.4.1. Civil and Criminal Liability**

Except as provided in permit conditions for "*Bypass*" (**Section 2.3.5**), "*Overflows and Releases*" (**Section 2.3.2**), and "*Upset*" (**Section 2.3.3**), nothing in this permit shall be construed to relieve the permittee from civil or criminal penalties for noncompliance. Notwithstanding this permit, the permittee shall remain liable for any damages sustained by the State of Tennessee, including, but not limited to, fish kills and losses of aquatic life and/or wildlife as a result of the discharge of wastewater to any surface or subsurface waters. Additionally, notwithstanding this permit, it shall be the responsibility of the permittee to conduct its wastewater treatment and/or discharge activities in a manner such that public or private nuisances or health hazards will not be created.

### **2.4.2. Liability Under State Law**

Nothing in this permit shall be construed to preclude the institution of any legal action or relieve the permittee from any responsibilities, liabilities, or penalties established pursuant to any applicable state law or the Federal Water Pollution Control Act, as amended.



## PART 3

---

### 3. PERMIT SPECIFIC REQUIREMENTS

#### 3.1. CERTIFIED OPERATOR

The waste treatment facilities shall be operated under the supervision of a certified wastewater treatment operator, and the collection system shall be operated under the supervision of a certified collection system operator in accordance with the Water Environmental Health Act of 1984.

#### 3.2. POTW PRETREATMENT PROGRAM GENERAL PROVISIONS

As an update of information previously submitted to the Division, the permittee will undertake the following activity:

- a) The permittee shall submit the results of an Industrial Waste Survey (IWS) in accordance with Rule 0400-40-14-.08-(6)(b)1, including any industrial users (IU) covered under Section 301(i)(2) of the Act. As much information as possible must be obtained relative to the character and volume of pollutants contributed to the POTW by the IUs. This information will be submitted to the Division of Water Resources, Pretreatment Section within one hundred twenty (120) days of the effective date of this permit, unless such a survey has been submitted within 3 years of the effective date. Development of a pretreatment program may be required after completion of the industrial user review. All requirements and conditions of the pretreatment program are enforceable through the NPDES permit.
- b) The permittee shall enforce Rule 0400-40-14-.05, "prohibited discharges". Pollutants introduced into the POTW by a non-domestic source shall not cause pass through or interference as defined in Rule 0400-40-14-.03. These general prohibitions and the specific prohibitions in this section apply to all non-domestic sources introducing pollutants into the POTW whether the source is subject to other National Pretreatment Standards or any state or local pretreatment requirements.

*Specific prohibitions:* Under no circumstances shall the permittee allow introduction of the following wastes into the POTW:

- i. Pollutants which create a fire or explosion hazard in the POTW, including, but not limited to, wastestreams with a closed cup flashpoint

- of less than 140°F or 60°C using the test methods specified in 40 CFR § 261.21
- ii. Pollutants which will cause corrosive structural damage to the POTW, but in no case discharges with pH lower than 5.0 unless the system is specifically designed to accommodate such discharges;
  - iii. Solid or viscous pollutants in amounts which will cause obstruction to the flow in the POTW resulting in interference;
  - iv. Any pollutant, including oxygen-demanding pollutants (BOD, etc.) released in a discharge at a flow rate and/or pollutant concentration which will cause interference with the POTW;
  - v. Heat in amounts which will inhibit biological activity in the POTW resulting in interference, but in no case heat in such quantities that the temperature at the POTW Treatment Plant exceeds 40°C (104°F) unless the Division, upon request of the POTW, approves alternate temperature limits;
  - vi. Any priority pollutant in amounts that will contaminate the treatment works sludge;
  - vii. Petroleum oil, nonbiodegradable cutting oil, or products of mineral oil origin in amounts that will cause interference or pass through;
  - viii. Pollutants which result in the presence of toxic gases, vapors or fumes within the POTW in a quantity that may cause acute worker health and safety problems; or
  - ix. Any trucked or hauled pollutants, except at discharge points designated by the POTW.
- c) The permittee shall notify the Division of any of the following changes in user discharge to the system no later than 30 days prior to change of discharge:
- i. New introductions into such works of pollutants from any source which would be a new source as defined in Section 306 of the Act if such source were discharging pollutants;
  - ii. New introductions of pollutants into such works from a source which would be subject to Section 301 of the "Federal Water Quality Act as Amended" if it were discharging such pollutants; or
  - iii. A substantial change in volume or character of pollutants being introduced into such works by a source already discharging pollutants into such works at the time this permit is issued.

This notice will include information on the quantity and quality of the wastewater introduced by the new source into the POTW, and on any anticipated impact on the effluent discharged from such works. If this discharge necessitates a revision of the current NPDES permit or pass-through



guidelines, discharge by this source is prohibited until the Tennessee Division of Water Resources gives final authorization.

### **3.3. BIOSOLIDS MANAGEMENT PRACTICES**

All sludge and/or biosolids use or disposal must comply with 40 CFR § 503 *et seq.* Biosolids shall be sampled and analyzed at a frequency dependent on the amount used annually.

Any facility that land applies non-exceptional quality biosolids must obtain an appropriate permit from the Division in accordance with Chapter 0400-40-15.

- a) Reopener: If an applicable "acceptable management practice" or numerical limitation for pollutants in sewage sludge promulgated under Section 405(d)(2) of the Clean Water Act, as amended by the Water Quality Act of 1987, is more stringent than the sludge pollutant limit or acceptable management practice in this permit, or controls a pollutant not limited in this permit, this permit shall be promptly modified or revoked and reissued to conform to the requirements promulgated under Section 405(d)(2). The permittee shall comply with the limitations by no later than the compliance deadline specified in the applicable regulations as required by Section 405(d)(2) of the Clean Water Act.
- b) Notice of change in sludge disposal practice: The permittee shall give prior notice to the Director of any change planned in the permittee's sludge disposal practice.

*STATE OF TENNESSEE  
DEPARTMENT OF ENVIRONMENT AND CONSERVATION  
DIVISION OF SOLID WASTE MANAGEMENT  
Cookeville Environmental Field Office  
1221 South Willow Avenue  
Cookeville, Tennessee 38506  
(931)520-6688*

### **3.4. PLACEMENT OF SIGNS**

Within 60 days of the effective date of this permit, the permittee shall place and maintain a sign at each outfall and any overflow/release point in the collection system or the nearest publicly accessible location. For the purposes of this requirement, any point that has had a total of 5 or more overflows plus releases in the previous 12 months must be so posted. The sign(s) should be clearly visible to the public from the bank and the receiving stream. The *minimum* sign size



should be two feet by two feet (2' x 2') with one-inch (1") letters. The sign should be made of durable material and have a white background with black letters.

The sign(s) are to provide notice to the public as to the nature of the discharge and, in the case of the permitted outfalls, that the discharge is regulated by the Tennessee Department of Environment and Conservation, Division of Water Resources. The following are given as examples of the minimal amount of information that must be included on the signs:

**NPDES Permitted Municipal/Sanitary Outfall:**

**TREATED MUNICIPAL/SANITARY WASTEWATER**  
**Town of Alexandria**  
**Alexandria STP**  
**(615) 529-2171**  
**NPDES Permit NO. TN0021539**  
**TENNESSEE DIVISION OF WATER RESOURCES**  
**1-888-891-8332 ENVIRONMENTAL FIELD OFFICE - Cookeville**

**Unpermitted release/overflow point:**

**UNTREATED WASTEWATER DISCHARGE POINT**  
**Town of Alexandria**  
**Alexandria STP**  
**(615) 529-2171**  
**NPDES Permit No. TN0021539**  
**TENNESSEE DIVISION OF WATER RESOURCES**  
**1-888-891-8332 ENVIRONMENTAL FIELD OFFICE - Cookeville**

The permittee may request the removal of signs for unpermitted release/overflows points only. This request should be sent to Division EFO staff detailing the work that has been completed to rectify the cause(s) contributing to overflows and releases at that location. In no case will approval to remove the signs be granted if either an overflow or release has occurred at that location in the previous 12 months.

## PART 4

---

### 4. DEFINITIONS AND ACRONYMS

All terminology not specifically defined herein shall be defined in accordance with the Water Quality Control Act of 1977, T.C.A. Title 69, Chapter 3, Part 1 and Tennessee Rule 0400-40-05. The following terms have the meanings given below unless otherwise specified.

#### 4.1. DEFINITIONS

For the purposes of this permit, **annually** is defined as a monitoring frequency of once every 12 months beginning with the effective date of this permit, so long as the following set of measurements for a given 12 month period are made approximately 12 months subsequent to that time.

**Biosolids** are treated sewage sludge that have contaminant concentrations less than or equal to the contaminant concentrations listed in Table 1 of subparagraph (3)(b) of Rule 0400-40-15-.02, meet any one of the ten vector attraction reduction options listed in part (4)(b)1, 2, 3, 4, 5, 6, 7, 8, 9, or 10 of Rule 0400-40-15-.04, and meet either one of the six pathogen reduction alternatives for Class A listed in part (3)(a)3, 4, 5, 6, 7, or 8, or one of the three pathogen reduction alternatives for Class B listed in part (3)(b)2, 3, or 4 of Rule 0400-40-15-.04.

**Bypass** means the intentional diversion of waste streams from any portion of a treatment facility.

A **calendar day** means the 24-hour period from midnight to midnight or any other 24-hour period that reasonably approximates the midnight to midnight time period.

**Combined sewer overflow** or "CSO" means a discharge from a combined sewer system (CSS) at a point prior to the publicly owned treatment works (POTW) treatment plant headworks.

**Combined sewer system** or "CSS" means a wastewater collection system owned by a State or municipality which was originally designed to convey sanitary wastewaters (domestic, commercial, and industrial wastewaters) and stormwater through a single-pipe system into a publicly owned treatment works (POTW) treatment plant headworks.

A **composite sample** means a combination of not less than eight influent or effluent portions (aliquots), collected over a 24-hour period. Under certain circumstances a lesser time period may be allowed, but in no case less than eight hours. A sufficient volume of sample to perform all required analyses plus any additional amount for quality control must be obtained. For automatic samplers that use a peristaltic pump, a minimum 100 ml aliquot must be obtained.

The **daily maximum amount** means the total amount of any pollutant in the discharge by weight during any calendar day.

The **daily maximum concentration** is a limitation on the average concentration in units of mass per volume (e.g. milligrams per liter) of the discharge during any calendar day. When a proportional-to-flow composite sampling device is used, the daily maximum concentration is the concentration of that 24-hour composite; when other sampling means are used, the daily maximum concentration is the arithmetic mean of the concentrations of equal volume samples collected during any calendar day or sampling period.

**Degradation** means the alteration of the properties of waters by the addition of pollutants, withdrawal of water, or removal of habitat, except those alterations of a short duration.

**De Minimis** is degradation of a small magnitude, as provided in this paragraph:

- (a) Discharges and withdrawals:
  1. Subject to the limitation in part 3 of this subparagraph, a single discharge other than those from new domestic wastewater sources will be considered de minimis if it uses less than five percent of the available assimilative capacity for the substance being discharged.
  2. Subject to the limitation in part 3 of this subparagraph, a single water withdrawal will be considered de minimis if it removes less than five percent of the 7Q10 flow of the stream.
  3. If more than one activity described in part 1 or 2 of this subparagraph has been authorized in a segment and the total of the authorized and proposed impacts uses no more than 10% of the assimilative capacity, or 7Q10 low flow, they are presumed to be de minimis. Where the total of the authorized and proposed impacts uses 10% of the assimilative capacity, or 7Q10 low flow, additional degradation may only be treated as de minimis if the Division finds on a scientific basis that the additional degradation has an insignificant effect on the resource.
- (b) Habitat alterations authorized by an Aquatic Resource Alteration Permit (ARAP) are de minimis if the Division finds that the impacts, individually and



cumulatively, are offset by impact minimization and/or in-system mitigation, provided however, in Outstanding National Resource Waters (ONRWs) the mitigation must occur within the ONRW.

**Discharge** or **discharge of a pollutant** refers to the addition of pollutants to waters from a source.

A **dry weather overflow** means a sanitary sewer overflow that is not directly related to a rainfall event.

An **ecoregion** is a relatively homogeneous area defined by similarity of climate, landform, soil, potential natural vegetation, hydrology, or other ecologically relevant variables.

The **geometric mean** of any set of values means the  $n^{\text{th}}$  root of the product of the individual values where  $n$  is equal to the number of individual values. The geometric mean is equivalent to the antilog of the arithmetic mean of the logarithms of the individual values. For the purposes of calculating the geometric mean, values of zero shall be considered to be one.

A **grab sample** means a single sample collected at a particular time.

**IC<sub>25</sub>** means the inhibition concentration in which at least a 25% reduction in reproduction and/or growth in test organisms occurs.

**Industrial discharger** means those industries identified in the standard industrial classification manual, Bureau of the Budget, 1987, as amended and supplemented, under the category "Division D - Manufacturing" and such other classes of significant waste producers as the Board or Commissioner deems appropriate.

**Industrial wastes** means any liquid, solid, or gaseous substance, or combination thereof, or form of energy including heat, resulting from any process of industry, manufacture, trade, or business or from the development of any natural resource.

The **instantaneous maximum concentration** means the concentration, in units of mass per volume, of any pollutant parameter in a grab sample taken at any point in time.



The ***instantaneous minimum concentration*** means the minimum concentration, in units of mass per volume, of a pollutant parameter in a grab sample taken at any point in time.

***LC<sub>50</sub>*** means the concentration that causes at least 50% lethality of the test organisms.

***Major facility*** means a municipal or domestic wastewater treatment plant with a design capacity of one million gallons per day or greater; or any other facility or activity classified as such by the Commissioner.

***Minor facility*** means any facility that is not a major facility.

The ***monthly average amount*** means the arithmetic mean of all the measured daily discharges by weight during the calendar month when the measurements were made.

The ***monthly average concentration***, means the arithmetic mean of all samples collected in a one calendar-month period, expressed in units of mass per volume of any pollutant other than bacteria.

***National Pollutant Discharge Elimination System*** or ***NPDES*** means the national program for issuing, modifying, revoking and reissuing, terminating, monitoring and enforcing permits, and imposing and enforcing pretreatment requirements, under sections 307, 402, 318, and 405 of the federal CWA. The term includes an "approved program."

***New or increased discharge*** is a new discharge of pollutants to waters of the state or an increase in the authorized loading of a pollutant above either (1) numeric effluent limitations established in a National Pollutant Discharge Elimination System permit for that discharge, or (2) if no such limitations exist, the actual discharges of that pollutant.

***New source*** means any building, structure, facility, area, or installation from which there is or may be a "discharge of pollutants," the construction of which commenced after the publication of state or federal regulations prescribing a standard of performance.

***Nitrate (as N)*** means nitrate reported as nitrogen.





A **one-week period** (or **calendar-week**) means the period from Sunday through Saturday. For weekly average reporting purposes, a calendar week that contains a change of month shall be considered part of the latter month.

**Owner** or **operator** means any person who owns, leases, operates, controls, or supervises a source.

**Person** means an individual, association, partnership, corporation, municipality, state or federal agency, or an agent or employee thereof.

**Point source** means any discernible, confined, and discrete conveyance, including but not limited to, any pipe, ditch, channel, tunnel, conduit, well, discrete fissure, container, rolling stock, concentrated animal feeding operation, landfill leachate collection system, vessel, or other floating craft from which pollutants are or may be discharged. This term does not include return flows from irrigated agriculture or agricultural stormwater runoff.

**Pollutant** means sewage, industrial wastes, or other wastes.

**Pollution** means such alteration of the physical, chemical, biological, bacteriological, or radiological properties of the waters of this state including, but not limited to, changes in temperature, taste, color, turbidity, or odor of the waters that will:

- (a) Result or will likely result in harm, potential harm, or detriment to the public health, safety, or welfare;
- (b) Result or will likely result in harm, potential harm, or detriment to the health of animals, birds, fish, or aquatic life;
- (c) Render or will likely render the waters substantially less useful for domestic, municipal, industrial, agricultural, recreational, or other reasonable uses; or
- (d) Leave or likely leave the waters in such condition as to violate any standards of water quality established by the Board.

**Quarter** means any one of the following three-month periods: January 1 through March 31, April 1 through June 30, July 1 through September 30, and/or October 1 through December 31.

**Rainfall event** means any occurrence of rain, preceded by 10 hours without precipitation that results in an accumulation of 0.01 inches or more. Instances of



rainfall occurring within 10 hours of each other will be considered a single rainfall event.

**Rationale** or **fact sheet** means a document that is prepared when drafting an NPDES permit or permit action. It provides the technical, regulatory and administrative basis for an agency's permit decision.

A **reference site** means the least impacted waters within an ecoregion that have been monitored to establish a baseline to which alterations of other waters can be compared.

A **reference condition** is a parameter-specific set of data from regional reference sites that establish the statistical range of values for that particular substance at least-impacted streams.

**Release** means the flow of sewage from any portion of the collection or transmission system owned or operated by a publicly owned treatment works (POTW) or a domestic wastewater treatment plant, other than through permitted outfalls, that does not reach waters. In addition, a "release" includes a backup into a building or private property that is caused by blockages, flow conditions, or other malfunctions originating in the collection or transmission system owned or operated by the permittee. A "release" does not include:

- (a) Backups into a building or private property caused by blockages or other malfunctions originating in a private lateral;
- (b) Events caused by vandalism;
- (c) Events caused by lightning strike;
- (d) Events caused by damage due to third parties working on other utilities in the right of way, e.g., cross bore from telecommunications line; or
- (e) Events that are directly incidental to planned, preventative, or predictive maintenance provided the site is under the direct control of a certified operator or contractor, public access is restricted, and the site is disinfected.

**Sanitary sewer overflow** or **SSO** means an unpermitted discharge of wastewater from the collection, transmission, or treatment system other than through the permitted outfall.



***Schedule of compliance*** means a schedule of remedial measures including an enforceable sequence of actions or operations leading to compliance with an effluent limitation, condition of a permit, other limitation, prohibition, standard, or regulation. This term includes, but is not limited to, schedules authorized by national effluent limitations guidelines or by Tennessee's water quality standards.

The term ***semi-annually***, for the purposes of this permit, means the same as once every 6 months. Measurements of the limited effluent parameters may be made any time during a 6 month period beginning from the effective date of this permit, so long as the second set of measurements for a given 12 month period are made approximately 6 months subsequent to that time, if feasible.

***Severe property damage***, when used to consider the allowance of a bypass, means substantial physical damage to property, damage to the treatment facilities which causes them to become inoperable, or substantial and permanent loss of natural resources which can reasonably be expected to occur in the absence of a bypass. Severe property damage does not mean economic loss caused by delays in production.

***Sewage*** means water-carried waste or discharges from human beings or animals, from residences, public or private buildings, or industrial establishments, or boats, together with such other wastes and ground, surface, storm, or other water as may be present

***Sewerage system*** means the conduits, sewers, and all devices and appurtenances by means of which sewage and other waste is collected, pumped, treated, or disposed.

***Sludge*** or ***sewage sludge*** is solid, semi-solid, or liquid residue generated during the treatment of domestic sewage in a treatment works. Sewage sludge includes, but is not limited to, domestic septage; scum or solids removed in primary, secondary, or advanced wastewater treatment processes; and a material derived from sewage sludge. Sewage sludge does not include ash generated during the firing of sewage sludge in a sewage sludge incinerator or grit and screenings generated during preliminary treatment of domestic sewage in a treatment works.

***Source*** means any activity, operation, construction, building, structure, facility, or installation from which there is or may be the discharge of pollutants.

***Standard of performance*** means a standard for the control of the discharge of pollutants that reflects the greatest degree of effluent reduction that the

Commissioner determines to be achievable through application of the best available demonstrated control technology, processes, operating methods, or other alternatives, including, where practicable, a standard permitting no discharge of pollutants.

**Stream** means a surface water that is not a wet weather conveyance.

**Subcoregion** is a smaller, more homogenous area that has been delineated within an ecoregion.

**Total dissolved solids** or **TDS** means nonfilterable residue.

**Upset** means an exceptional incident in which there is unintentional and temporary noncompliance with technology-based effluent limitations because of factors beyond the reasonable control of the permittee. An upset does not include noncompliance to the extent caused by operational error, improperly designed treatment facilities, inadequate treatment facilities, lack of preventive maintenance, or careless or improper operation.

The term **washout** is applicable to domestic wastewater activated sludge plants and means a loss of mixed liquor suspended solids (MLSS) of 30.00% or more from the aeration basin(s).

**Waters** means any and all water, public or private, on or beneath the surface of the ground, which are contained within, flow through, or border upon Tennessee or any portion thereof, except those bodies of water confined to and retained within the limits of private property in single ownership which do not combine or effect a junction with natural surface or underground waters.

**Watercourse** means a man-made or natural hydrologic feature with a defined linear channel that discretely conveys flowing water, as opposed to sheet-flow.

**Weekly average amount** means the arithmetic mean of all the measured daily discharges by weight during the calendar week when the measurements were made.

**Weekly average concentration** means the arithmetic mean of all the concentrations expressed in units of mass per volume of any pollutant measured in a calendar week.



***Wet weather conveyance*** means, notwithstanding any other law or rule to the contrary, man-made or natural watercourses, including natural watercourses that have been modified by channelization:

- (a) That flow only in direct response to precipitation runoff in their immediate locality;
- (b) Whose channels are at all times above the groundwater table;
- (c) That are not suitable for drinking water supplies; and
- (d) In which hydrological and biological analyses indicate that, under normal weather conditions, due to naturally occurring ephemeral or low flow there is not sufficient water to support fish, or multiple populations of obligate lotic aquatic organisms whose life cycle includes an aquatic phase of at least two months.

***Wet weather overflow*** means a sanitary sewer overflow that is directly related to a specific rainfall event.

***Wet weather release*** means a release that is directly related to a specific rainfall event.

#### **4.2. ACRONYMS AND ABBREVIATIONS**

1Q10	–	1-day minimum, 10-year recurrence interval
30Q5	–	30-day minimum, 5-year recurrence interval
7Q10	–	7-day minimum, 10-year recurrence interval
BAT	–	best available technology economically achievable
BCT	–	best conventional pollutant control technology
BDL	–	below detection limit
BOD <sub>5</sub>	–	five-day biochemical oxygen demand
BPT	–	best practicable control technology currently available
CBOD <sub>5</sub>	–	five-day carbonaceous biochemical oxygen demand
CEI	–	compliance evaluation inspection
CFR	–	code of federal regulations
CFS	–	cubic feet per second
CFU	–	colony forming units
CIU	–	categorical industrial user
CSO	–	combined sewer overflow
DMR	–	discharge monitoring report
D.O.	–	dissolved oxygen



<i>E. coli</i>	–	<i>Escherichia coli</i>
EPA	–	Environmental Protection Agency
EFO	–	environmental field office
GPM	–	gallons per minute
IC <sub>25</sub>	–	inhibition concentration causing 25% reduction in survival, reproduction, and growth of the test organisms
IU	–	industrial user
IWS	–	industrial waste survey
LB (lb)	–	pound
LC <sub>50</sub>	–	acute test causing 50% lethality
MDL	–	method detection limit
MGD	–	million gallons per day
mg/L	–	milligrams per liter
ML	–	minimum level of quantification
mL	–	milliliter
MLSS	–	mixed liquor suspended solids
MOR	–	monthly operating report
NODI	–	no discharge code in NetDMR
NPDES	–	national pollutant discharge elimination system
PL	–	permit limit
POTW	–	publicly owned treatment works
SAR	–	semi-annual report [pretreatment program]
SIU	–	significant industrial user
SSO	–	sanitary sewer overflow
STP	–	sewage treatment plant
TBEL	–	technology-based effluent limit
TCA	–	Tennessee code annotated
TDEC	–	Tennessee Department of Environment and Conservation
TIE/TRE	–	toxicity identification evaluation/toxicity reduction evaluation
TMDL	–	total maximum daily load
TRC	–	total residual chlorine
TSS	–	total suspended solids
WQBEL	–	water quality-based effluent limit



#### **4.3. RESOURCES, HYPERLINKS, AND WEB PAGES**

Clean Water Act NPDES Electronic Reporting (eReporting) Information

<https://www.epa.gov/compliance/npdes-ereporting>

Electronic Code of Federal Regulations (eCFR), Title 40 (40 CFR § 1 through § 1099)

<https://www.ecfr.gov/cgi-bin/text-idx?SID=75202eb5d09974cab585afeea981220b&mc=true&tpl=/ecfrbrowse/Title40/40chapter1.tpl>

Electronic Reporting (NetDMR) Waiver Request

[https://www.tn.gov/content/dam/tn/environment/water/documents/wr\\_ereporting\\_waiver.pdf](https://www.tn.gov/content/dam/tn/environment/water/documents/wr_ereporting_waiver.pdf)

Low Flow Statistics Tools: A How-To Handbook for NPDES Permit Writers (EPA)

[https://www.epa.gov/sites/production/files/2018-11/documents/low\\_flow\\_stats\\_tools\\_handbook.pdf](https://www.epa.gov/sites/production/files/2018-11/documents/low_flow_stats_tools_handbook.pdf)

Methods for Measuring the Acute Toxicity of Effluents and Receiving Waters to Freshwater and Marine Organisms (EPA)

[https://www.epa.gov/sites/production/files/2015-08/documents/acute-freshwater-and-marine-wet-manual\\_2002.pdf](https://www.epa.gov/sites/production/files/2015-08/documents/acute-freshwater-and-marine-wet-manual_2002.pdf)

NetDMR Login

<https://cdxnodengn.epa.gov/net-netdmr/>

NetDMR, MyTDEC Forms, & Electronic Reporting Information

<https://www.tn.gov/environment/program-areas/wr-water-resources/netdmr-and-electronic-reporting.html>

NPDES Compliance Inspection Manual (EPA)

<https://www.epa.gov/sites/production/files/2017-01/documents/npdesinspect.pdf>

NPDES Electronic Reporting Rule

<https://www.federalregister.gov/documents/2015/10/22/2015-24954/national-pollutant-discharge-elimination-system-npdes-electronic-reporting-rule>

Quality System Standard Operating Procedure for Macroinvertebrate Stream Surveys (QSSOP)

[https://www.tn.gov/content/dam/tn/environment/water/documents/DWR-PAS-P-01-Quality\\_System\\_SOP\\_for\\_Macroinvertebrate\\_Stream\\_Surveys-081117.pdf](https://www.tn.gov/content/dam/tn/environment/water/documents/DWR-PAS-P-01-Quality_System_SOP_for_Macroinvertebrate_Stream_Surveys-081117.pdf)

Rules of the TN Department of Environment and Conservation, Chapter 0400-40

<https://publications.tnsosfiles.com/rules/0400/0400-40/0400-40.htm>

Short-term Methods for Estimating the Chronic Toxicity of Effluents and Receiving Waters to Freshwater Organisms (EPA)

[https://www.epa.gov/sites/production/files/2015-08/documents/short-term-chronic-freshwater-wet-manual\\_2002.pdf](https://www.epa.gov/sites/production/files/2015-08/documents/short-term-chronic-freshwater-wet-manual_2002.pdf)

TDEC Water Quality Rules, Reports, and Publications

<https://www.tn.gov/environment/program-areas/wr-water-resources/water-quality/water-quality-reports---publications.html>

Technical Support Document for Water Quality-based Toxics Control (EPA)

<https://www3.epa.gov/npdes/pubs/owm0264.pdf>

Tennessee Nutrient Reduction Framework

[https://www.tn.gov/content/dam/tn/environment/water/tmdl-program/wr-ws\\_tennessee-draft-nutrient-reduction-framework\\_030315.pdf](https://www.tn.gov/content/dam/tn/environment/water/tmdl-program/wr-ws_tennessee-draft-nutrient-reduction-framework_030315.pdf)

Tennessee Plant Optimization Program (TNPOP)

<https://www.tn.gov/environment/program-areas/wr-water-resources/tn-plant-optimization-programs/tnpop.html>

Tennessee Water Resources Data and Map Viewers

<https://www.tn.gov/environment/program-areas/wr-water-resources/water-quality/water-resources-data-map-viewers.html>

USGS StreamStats

[https://www.usgs.gov/mission-areas/water-resources/science/streamstats-streamflow-statistics-and-spatial-analysis-tools?qt-science\\_center\\_objects=0#qt-science\\_center\\_objects](https://www.usgs.gov/mission-areas/water-resources/science/streamstats-streamflow-statistics-and-spatial-analysis-tools?qt-science_center_objects=0#qt-science_center_objects)

USGS SWToolbox

<https://www.usgs.gov/software/swtoolbox-software-information>



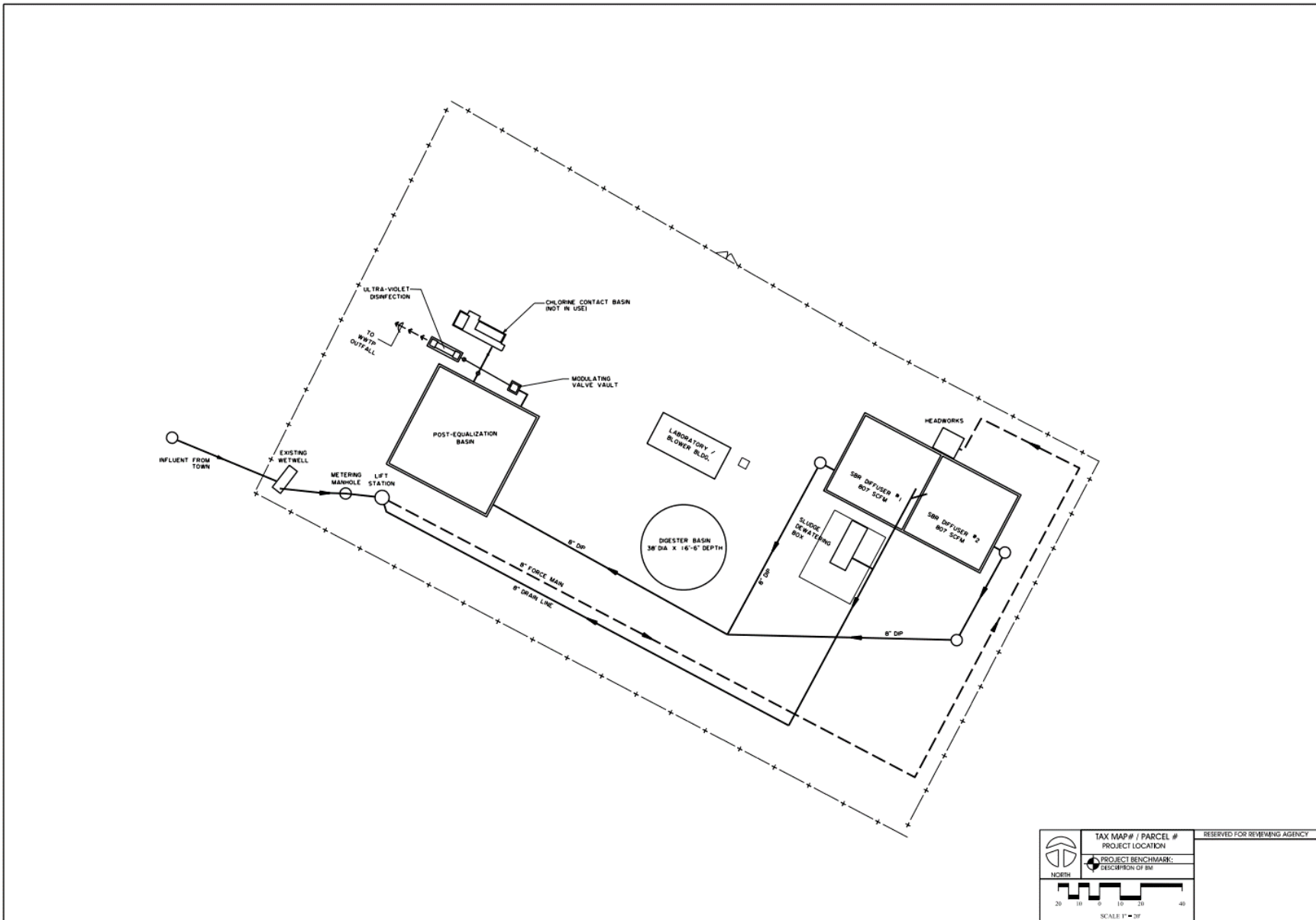
## RATIONALE

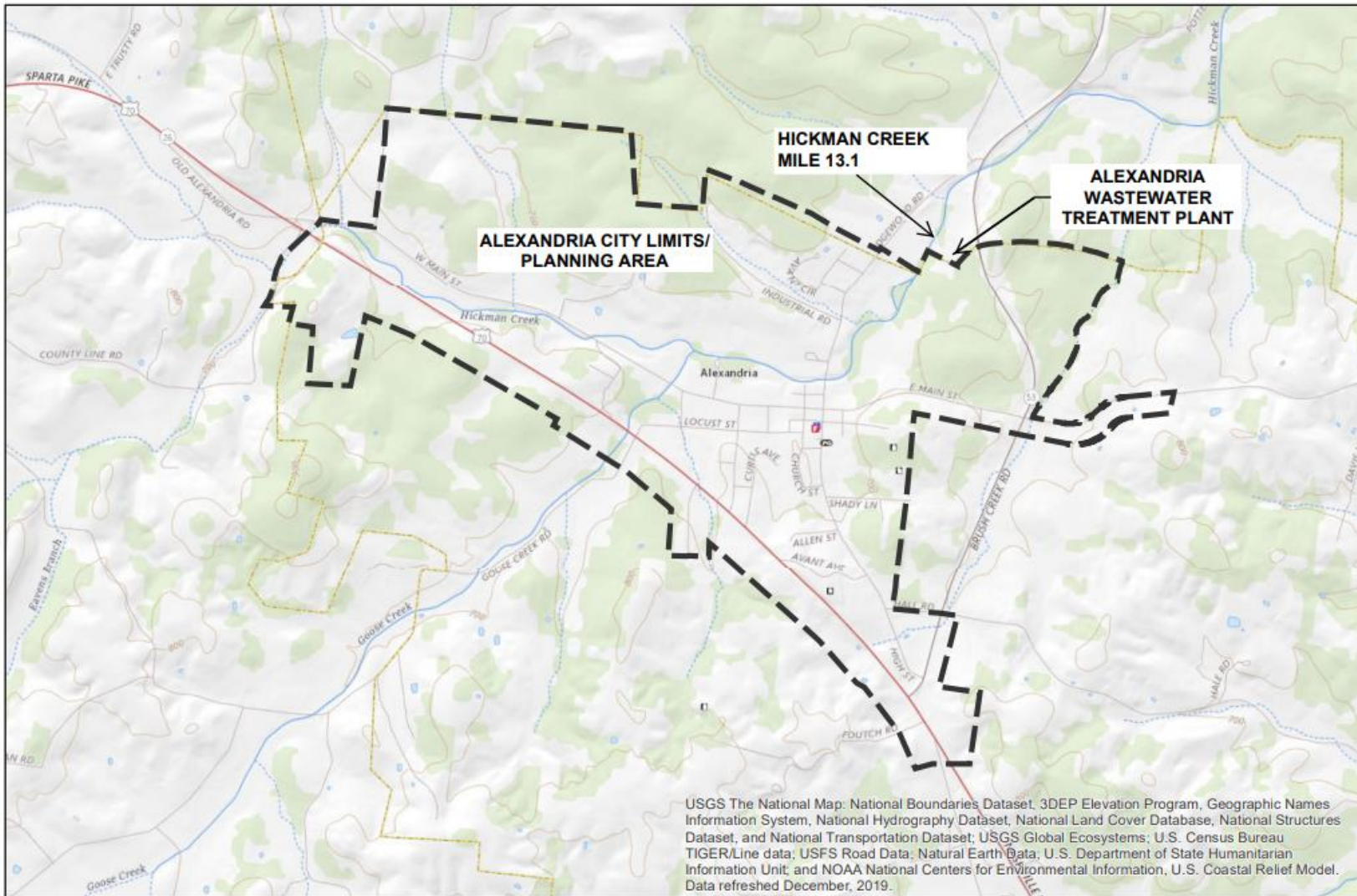
---

Town of Alexandria  
Alexandria STP  
NPDES Permit No. TN0021539  
Date: 6/24/2022  
Permit Writer: Maybelle T. Sparks, P.E.

### 1. FACILITY INFORMATION

<b>Permittee Name:</b>	Town of Alexandria
<b>Project Name:</b>	Alexandria STP
<b>Location:</b>	35 Edgewood Road, Alexandria, DeKalb County, Tennessee
<b>Contact:</b>	The Honorable Bennett Armstrong - Mayor-Town of Alexandria (615) 529-2171 cityrecorder@dtccom.net
<b>Design Flow Rate:</b>	0.3 MGD
<b>Percentage Industrial Flow:</b>	0%
<b>Certified Operator Grades:</b>	STP: 3; CS: 1; Date Rated: 05/23/00
<b>Treatment Description:</b>	Sequencing batch reactor (SBR) with post equalization and UV disinfection. Sludge is aerobically digested and dewatered for landfill.





**Alexandria, TN  
WWTP Improvements**

Latitude: 36.084234 / Longitude: -86.026357		
TN State Plane: 1,956,712' E/ 637,341' N		
Location: Brush Creek Hwy/ State Hwy 53		
Job No.: 8706-19	Date: 5/10/2022	Revisions:
Scale: 1 inch = 2,000 feet	Drawn By: JPP	



**WARREN  
& ASSOCIATES**  
ENGINEERING, PLLC  
CONSULTING SERVICES

109 Pennsylvania Avenue • Lebanon, Tennessee 37087  
Phone: 615-444-2926 / Fax: 615-444-2961

## 2. RECEIVING STREAM INFORMATION

<b>Receiving Waterbody:</b>	<b>Hickman Creek at mile 13.1</b>			
<b>Watershed Group:</b>	Caney Fork			
<b>Hydrocode:</b>	5130108			
<b>Low Flow:</b>	7Q10 = 0 MGD (0 CFS)			
<b>Low Flow Reference:</b>	USGS StreamStats based on limited drainage area			
<b>Stream Designated Uses:</b>	<i>Domestic Water Supply</i>	<i>Industrial</i>	<i>Fish &amp; Aquatic Life</i>	<i>Recreation</i>
			<b>X</b>	<b>X</b>
	<i>Livestock &amp; Wildlife</i>	<i>Irrigation</i>	<i>Navigation</i>	<i>Trout</i>
	<b>X</b>	<b>X</b>		

Low flows on unregulated streams are estimated using guidance from the EPA document *Low Flow Statistics Tools: A How-To Handbook for NPDES Permit Writers*. When sufficient and representative USGS gage data is available, *USGS SWToolbox* is used to analyze the flow data and calculate 7Q10 and 30Q5 values. Using these low flow values at the gage, the permit writer then determines the flow at the point of discharge using the following equation:

$$Q_{outfall} = Q_{gage} \times \frac{A_{outfall}}{A_{gage}}$$

Where:

- Q<sub>outfall</sub> = Low flow statistic at outfall location
- Q<sub>gage</sub> = Low flow statistic at gage location
- A<sub>outfall</sub> = Area draining to outfall
- A<sub>gage</sub> = Area draining to gage

In the absence of sufficient gage data, the Division relies on USGS Streamstats to calculate low flows statistics.

In this permit, no sufficient gage data is available to characterize the receiving stream. Thus, USGS Streamstats was used to delineate the critical low flow at the point of discharge.

## 3. CURRENT PERMIT STATUS

<b>Permit Type:</b>	Municipal
<b>Classification:</b>	Minor
<b>Issuance Date:</b>	1-Jul-17
<b>Expiration Date:</b>	31-Jul-22
<b>Effective Date:</b>	1-Aug-17

#### 4. NEW PERMIT LIMITATIONS AND COMPLIANCE SCHEDULE SUMMARY

- a) The units for *E. coli* have been standardized to number per 100 mL (#/100 mL). Previously, the Division used either MPN/100 mL or CFU/100 mL. The identification of one of these two units indirectly created a requirement for a specific type of testing methodology. By utilizing #/100 mL unit, permittees are provided the flexibility to select the 40 CFR § 136 method that is most suitable for their operations. The limit value (number) will remain the same as the limit units are functionally equivalent.

Language throughout the permit has been updated to reflect the eReporting phase 2 requirements in 40 CFR § 127. This includes (but is not limited to) detailing specific data elements that are required to be reported for overflows, releases and bypasses as well as pretreatment program information.

Updated water quality criteria for ammonia were adopted in Tennessee Rule 0400-40-03-.03-3(3)(j) on September 11, 2019. These updated criteria have been implemented in the proposed permit, resulting in new ammonia limits. For the permittee to meet the new limits, this permit provides a compliance schedule. See **section 6.4** for more information.

- b) Compliance Schedule Summary

Description of Report to be Submitted	Reference Section in Permit
Monthly Discharge Monitoring Reports	1.3.1.
Monthly Operational Reports	1.3.4.
Bypass and Overflow and Release Report	1.3.5.1.
Report to Water.Permits@tn.gov detailing the following: (1) Activities necessary to achieve compliance with the ammonia limit and (2) completion or projected completion dates of each activity by December 31, 2024.	1.6.
Industrial Waste Survey Report within 120 days of the effective permit date	3.2.

- c) For comparison, this rationale contains a table depicting the previous permit limits and effluent monitoring requirements in Appendix 1.

## **5. PREVIOUS PERMIT TERM REVIEW**

A review of the permittee's Discharge Monitoring Reports (DMRs) from August 2017 to May 2022 revealed that the permittee reported violations of permit limits for CBOD<sub>5</sub>, TSS, TSS percent removal, ammonia and dissolved oxygen. A summary of data reported on DMRs during the previous permit term is located in Appendix 2.

## 6. PROPOSED EFFLUENT LIMITS AND RATIONALE

PARAMETERS	MONTHLY AVERAGE CONCENTRATION (MG/L)	MONTHLY AVERAGE AMOUNT (LB/DAY)	WEEKLY AVERAGE CONCENTRATION (MG/L)	WEEKLY AVERAGE AMOUNT (LB/DAY)	DAILY MAXIMUM CONCENTRATION (MG/L)	DAILY MINIMUM PERCENT REMOVAL	RATIONALE
CBOD <sub>5</sub> (summer)	10	25	15	37.5	20	40	D.O. protection, Refer to 6.1 below
CBOD <sub>5</sub> (winter)	20	50	25	62.6	30	40	D.O. protection, Refer to 6.1 below
NH <sub>3</sub> -N (summer)	1.1	2.8	1.7	4.2	2.2	—	Ammonia Toxicity
NH <sub>3</sub> -N (winter)	2.1	5.3	3.2	8	4.2	—	Ammonia Toxicity
NH <sub>3</sub> -N (summer)	0.7	1.8	1.1	2.8	1.4	—	Ammonia Toxicity <b>Effective January 1, 2025</b>
NH <sub>3</sub> -N (winter)	1.4	3.5	2.1	5.3	2.8	—	Ammonia Toxicity <b>Effective January 1, 2025</b>
Total Suspended Solids	30	75	40	100	45	40	Rule 0400-40-05-.09
Dissolved Oxygen	6.0 (daily minimum) instantaneous	—	—	—	—	—	D.O. protection, Refer to 6.1 below
Total Nitrogen	Report	Report	—	—	7,502 lb/yr Annual Rolling Average	—	Refer to 6.6 below
Total Phosphorus	Report	Report	—	—	1,562 lb/yr Annual Rolling Average	—	Refer to 6.6 below
<i>E. coli</i> (#/100mL)	126/100 mL	—	—	—	941/100 mL	—	Rule 0400-40-03-.03, Refer to 6.7 below
Settleable Solids (mL/L)	—	—	—	—	1.0	—	Rule 0400-40-05-.09
pH (standard units)	6.0 - 9.0	—	—	—	—	—	Rule 0400-40-03-.03
Flow (MGD):							
Influent	Report	—	—	—	Report	—	Used to quantify pollutant load
Effluent	Report	—	—	—	Report	—	Used to quantify pollutant load
	<b>Monthly Total</b>		Refer to 7.2 below				
Dry Weather	Overflows	0	Refer to 7.2 below				
Wet Weather	Overflows	0	Refer to 7.2 below				

Note: Weekly limitations on CBOD<sub>5</sub> and TSS concentrations are given as required per 40 CFR 133.102(a)(2) or 133.102(a)(4)(2) & 133.102 (b)(2) respectively; daily CBOD<sub>5</sub> and TSS limitations are authorized by T.C.A. 0400-40-05-.09; monthly and weekly mass loads are limited per 40 CFR 122.45(f) and based on the design flow as per 40 CFR 122.45(b); monthly average percent removal rates for CBOD<sub>5</sub> and TSS are required per 40 CFR 133.102(a)(3) or 133.102(a)(4)(iii) and 133.102 (b)(3) respectively. A minimum 40% daily removal rate is required as equivalent to a daily mass load limitation.

## **6.1. CONVENTIONAL PARAMETERS**

### **6.1.1. CBOD<sub>5</sub> and Dissolved Oxygen**

Streeter-Phelps modeling was performed during a previous issuance of this permit at various conditions to determine allowable organic loadings. The monthly average limits for CBOD<sub>5</sub> (10 mg/L summer, 20 mg/L winter) and D.O. (6 mg/L) still apply and are considered sufficient to result in an instream dissolved oxygen concentration that remains above the required minimum of 5.0 mg/L. Modeling results are located in the permit file administrative record.

In addition to CBOD<sub>5</sub>, NH<sub>3</sub>-N undergoes biological oxidation in a receiving stream thereby utilizing in stream oxygen and potentially reducing oxygen levels below water quality standards. Ammonia as N is also a pollutant that exhibits toxicity to fish and other aquatic life. The two effects are analyzed separately, and the Division imposes the most stringent limit in the permit.

### **6.1.2. Total Suspended Solids (TSS)**

Total Suspended Solids is a general indicator of the quality of a wastewater and will be limited in this permit. The technology-based TSS limit for conventional treatment plants is provided in Tennessee Rule 0400-40-05-.09(1)(a).

<b>TSS - Conventional Secondary Treatment Plants</b>			
<i>Monthly Average</i> 30 mg/L	<i>Weekly Average</i> 40 mg/L	<i>Daily Maximum</i> 45 mg/L	<i>Monthly Average</i> 85 % Removal

### **6.1.3. Percent Removal**

The treatment facility is required to remove 85% of the CBOD<sub>5</sub> and TSS that enter the facility on a monthly basis. This is part of the minimum requirement for all municipal treatment facilities contained in Code of Federal Regulations (CFR) 40 § 133.102. The reasons stated by the EPA for these requirements are to achieve these two basic objectives:

- i. To encourage municipalities to correct excessive inflow and infiltration (I/I) problems in their sanitary sewer systems; and
- ii. To help prevent intentional dilution of the influent wastewater as a means of meeting permit limits.





The treatment facility is required to remove 40% of the CBOD<sub>5</sub> and TSS that enter the facility on a daily basis. This percent removal will be calculated three times per week and recorded on the Monthly Operation Report. The number of excursions (days when CBOD<sub>5</sub> and/or TSS removal is less than 40%) will be reported on the Discharge Monitoring Report.

#### **6.1.4. Settleable Solids**

The settleable solids limit of 1 ml/L is a technology-based limit established in Rule 0400-40-05-.09.

#### **6.2. FLOW**

Monitoring of flow quantifies the load of pollutants to the stream. Flow shall be reported in million gallons per day (MGD) and monitored at the time of sample collection.

#### **6.3. PH**

According to the State of Tennessee Water Quality Standards [Chapter 0400-40-03-.03(3)(b)], the pH for the protection of Fish and Aquatic Life shall not fluctuate more than 1.0 unit over a period of 24 hours and shall not be outside the following ranges: 6.0 – 9.0 standard units (SU) in wadeable streams and 6.5 – 9.0 SU in larger rivers, lakes, reservoirs, and wetlands.

#### **6.4. AMMONIA (NH<sub>3</sub>-N)**

To assess ammonia toxicity impacts, the state utilizes Tennessee Rules, Chapter 0400-40-03-.03-3(3)(j), dated September 11, 2019, to derive allowable instream protection values protective of chronic and acute exposures to a continuous discharge. A mass balance equation with the treatment facility, stream flows, and these allowable values determines the monthly average and daily maximum permit limits.

The temperature used in calculations is determined based on measured ambient instream temperature or is estimated according to Tennessee's Three Grand Divisions as follows: East (winter 15°C, summer 25°C), Middle (winter 17°C, summer 27°C), and West (winter 20°C, summer 30°C).

Using measured temperature and pH values, the criterion continuous concentration (CCC) and criterion maximum concentration (CMC) values are calculated using the following equations:

$$CCC = 0.8876 * \left( \frac{0.0278}{1 + 10^{7.688 - pH}} + \frac{1.1994}{1 + 10^{pH - 7.688}} \right) * (2.126 * 10^{0.028 * (20 - \text{MAX}(T, 7))})$$

and

$$CMC = \text{MIN} \left\{ \left( \frac{0.275}{1 + 10^{7.204 - pH}} + \frac{39.0}{1 + 10^{pH - 7.204}} \right), \left( 0.7249 * \left( \frac{0.0114}{1 + 10^{7.204 - pH}} + \frac{1.6181}{1 + 10^{pH - 7.204}} \right) * (23.12 * 10^{0.036 * (20 - T)}) \right) \right\}$$

The determined CCC and CMC values are then used in the mass balance equation as follows:

$$CCC = \frac{Q_s C_s + Q_{\text{STP}} C_{\text{STP}}}{Q_s + Q_{\text{STP}}} \quad \text{or} \quad C_{\text{STP}} = \frac{CCC(Q_s + Q_{\text{STP}}) - (Q_s C_s)}{Q_{\text{STP}}}$$

where:

CCC	=	Criteria continuous concentration (mg/L)
Q <sub>S</sub>	=	7Q10 flow of receiving stream (MGD)
Q <sub>STP</sub>	=	Design flow of STP (MGD)
C <sub>S</sub>	=	Assumed/Measured instream NH <sub>3</sub> (mg/L)
C <sub>STP</sub>	=	Allowable STP discharge of NH <sub>3</sub> (mg/L)

See below for calculations:

CCC Calculation: Chronic Limits			
	<b>Winter</b>		<b>Summer</b>
Temp (°C)=	11	Temp (°C)=	21
pH=	8	pH=	8
MAX Expression	11.0000	MAX Expression	21.0000
	Winter CCC= <b>1.39</b>		Summer CCC= <b>0.73</b>
CCC - Continuous Chronic Criterion Allowable instream NH3 concentration [mg/l]			
$CCC = \frac{(Critical\ Low\ Flow\ [MGD] * Background\ Ammonia\ [mg/L]) + (Design\ Flow\ [MGD] * Effluent\ Concentration\ [mg/L])}{(Critical\ Low\ Flow\ [MGD] + (Design\ Flow\ [MGD]))}$			
where:			
	0.00	Critical Low Flow [MGD] (7Q10 value)	
	0.1	Background Ammonia Concentration [mg/L] *	
	0.3	WWTP Design Flow or long-term average flow [MGD]	
Therefore, the Allowable <b>Effluent Concentrations</b> and corresponding <b>Amounts</b> in winter and summer are:			
	<b>Winter</b>		<b>Summer</b>
	<b>1.39</b>	Concentration [mg/L]	<b>0.729</b>
	<b>3.5</b>	Amount [lb/day]	<b>1.8</b>
		Concentration [mg/L]	Amount [lb/day]
* In the absence of measured data, an assumed background concentration of 0.1 mg/L is used based on an Agreed Wasteload Allocation Modeling Methodology between the EPA and State of TN			

CMC Calculation: Acute Limits			
	<b>Winter</b>		<b>Summer</b>
Temp (°C)=	11	Temp (°C)=	21
pH=	8	pH=	8
MAX Expression	11.0000	MAX Expression	21.0000
	Winter CMC= <b>5.62</b>		Summer CMC= <b>3.59</b>
CMC - Continuous Maximum Criterion Allowable instream NH3 concentration [mg/l]			
$CMC = \frac{(Critical\ Low\ Flow\ [MGD] * Background\ Ammonia\ [mg/L]) + (Design\ Flow\ [MGD] * Effluent\ Concentration\ [mg/L])}{(Critical\ Low\ Flow\ [MGD] + (Design\ Flow\ [MGD]))}$			
where:			
	0.00	Critical Low Flow [MGD] (7Q10 value)	
	0.1	Background Ammonia Concentration [mg/L]	
	0.3	WWTP Design Flow or long-term average flow [MGD]	
Therefore, the Allowable <b>Effluent Concentrations</b> and corresponding <b>Amounts</b> in winter and summer are:			
	<b>Winter</b>		<b>Summer</b>
	<b>5.62</b>	Concentration [mg/L]	<b>3.594</b>
	<b>14.0</b>	Amount [lb/day]	<b>9.0</b>
		Concentration [mg/L]	Amount [lb/day]
* In the absence of measured data, an assumed background concentration of 0.1 mg/L is used based on an Agreed Wasteload Allocation Modeling Methodology between the EPA and State of TN			

The calculated acute and chronic toxicity values above are compared to ammonia limits previously imposed to prevent ammonia toxicity or calculated to protect ambient dissolved oxygen levels. The permit imposes the most stringent values in the analysis. The analysis compares the calculated chronic ammonia value (CCC) with a monthly average limit previously imposed to protect dissolved oxygen or to prevent toxicity. The analysis compares the calculated acute ammonia value (CMC) with the previously imposed daily maximum value to protect dissolved

oxygen or to prevent toxicity. Generally, water quality models have predicted the monthly average ammonia limit to protect dissolved oxygen. The Division has historically developed a companion daily maximum value to protect dissolved oxygen by multiplying the monthly average limit by two. Empirical data supports the factor of two developed in consideration of the natural variation in biological pollutant removal and the design basis for treatment unit sizing.

In order to allow the Town of Alexandria to meet the proposed limit above, the following compliance schedule is imposed:

The permit limits of 0.7 mg/l (summer) and 1.4 mg/l (winter) for ammonia will become effective on January 1, 2025.

By December 31, 2024, the permittee shall submit a report to [Water.Permits@tn.gov](mailto:Water.Permits@tn.gov) detailing the following:

- Activities necessary to achieve compliance with the ammonia limits.
- Completion or projected completion dates of each activity.

#### **6.5. CHLORINATION**

An effluent limitation for residual chlorine is not necessary since chlorine will not be utilized for disinfection.

#### **6.6. TOTAL NITROGEN AND TOTAL PHOSPHORUS**

Nutrients are naturally occurring and essential components of healthy aquatic systems. Excessive amounts of nutrients, however, can impact water quality. The enrichment of a waterbody with nutrients, called eutrophication, can result in dense, rapidly multiplying growths, or blooms, of algal species and other nuisance aquatic plants. These have potential for negatively impacting the habitat for fish and aquatic life and degrading the water quality for drinking water supply and recreation uses. These impacts can present both locally from an individual activity and much further downstream from the cumulative impact of multiple activities. The Division has therefore developed and begun to implement a strategy to accomplish long-term nutrient reduction in Tennessee waters. The strategy, referred to as the Tennessee Nutrient Reduction Framework (NRF), contains proposed rationale and the methodology for implementing the strategy within a watershed area. Consequently, the Framework considers impacts from both point and non-point sources of nutrients and recommends possible reduction goals for both point and non-point sources. The NRF approach to nutrient reduction is intended to utilize an adaptive management approach in consideration of the facts presenting within a watershed and reevaluation of the effectiveness of

progress being made. Regular reassessments of goals and action plans will be conducted by reviewing monitoring data, modeling results and other measures of success. As additional data becomes available (such as WWTP effluent characterization and instream water quality data), model results can be re-evaluated.

In implementing water quality law, the TDEC Division of Water Resources is responsible for implementing both federal and state law and their implementing regulations through monitoring, assessment, and permitting. The division routinely assesses the condition of Tennessee waters to identify those that have quality insufficient to maintain their designated uses. Additionally, the division identifies waters that it believes will not have the quality to maintain support in the near future unless measures are taken to address conditions interpreted to be a movement of water quality toward impairment. The division publishes these stream segments every other year pursuant to Section 303(d) of the Federal Clean Water Act. These division assessments of impaired streams serve to identify pollutants for which there are unavailable conditions. Therefore, this permit issued by the division cannot, and does not, ignore that fact. The anti-degradation statement in the Tennessee water quality standards specifically requires that discharges not further a condition of unavailable conditions.

The division has developed the statewide framework as an adaptive management approach. This is an iterative approach whereby the most practical treatment methods are prescribed for the symptoms and facts presenting followed by assessment of results and application of more stringent controls in subsequent control mechanisms. Control mechanisms may include permits, orders, agreements or any other legal arrangement allowable by law or regulation. This adaptive approach will ultimately identify where stream-specific wasteload allocations need to be developed through total maximum daily load (TMDL) development.

The SPARROW model is developed and supported by the United States Geological Survey (USGS) for regional watersheds in the nation. The term "SPARROW" refers to SPATIally Referenced Regressions On Watershed attributes, a model that relates in-stream water-quality data to spatially referenced characteristics of watersheds, including pollutant sources and transport factors. The SPARROW model performs a nonlinear least squares multiple regression on hydrologic elements to determine constituent load. The framework employs the concepts of an enrichment factor (EF) and aggregated WWTP loads to develop a decision making matrix of performance levels for both total phosphorus and total nitrogen. The division calculates both the EF and percentage of wastewater contribution from the SPARROW model.

This approach sets realistic numeric percent reduction goals that result in the best possible conditions given available BMPs and other pollutant controls. To achieve the water quality requirement, the framework ultimately prescribes a reduction in pollutants discharged from point sources and the implementation of BMPs that mitigate or reduce the adverse effects of stressors on the stream's overall ecology.

The loadings from the SPARROW model are used to determine the enrichment factor. Atmospheric deposition load represents background for nitrogen and soil-parent rock (S-P R) load represents background for phosphorus. Enrichment factors for nitrogen and phosphorus were calculated for each HUC 10 watershed. The calculated EFs and percent WWTP contributions for HUC 10 watersheds were used to derive thresholds for a decision-making matrix to determine the appropriate level of treatment requirement from WWTPs.

#### Limit Development

Load limits, versus concentration limits, give credit for any wastewater diverted from the outfall for reuse and thereby encourages reuse alternatives. Annual rolling average load limits allow operational flexibility in achieving the load limits through optimization of biological removal. Biological treatment is capable of achieving nutrient removal and is preferred to chemical removal for a couple of reasons. Chemical addition to the treatment processes is potentially a source of added degradation to the receiving stream and biological removal has the capability of recovering energy thereby reducing the carbon footprint of the activity.

This permit includes conditions to enable and encourage the continued exploration of biological nutrient removal. The division is encouraging a reduction in nitrogen and phosphorus loading without the use of added chemicals. Updated watershed modeling (SPARROW) has been conducted since issuance of this permit for the receiving HUC 10 watershed and places nitrogen and phosphorus in the low impact category. Part of TDEC's nutrient reduction strategy includes reduction in nutrients from agricultural sources in West Tennessee watersheds. In order to accomplish this, the division is collaborating with the Tennessee Department of Agriculture and the University of Tennessee Extension to work with landowners to adopt UT-Extension and NRCS-recommended agricultural Best Management Practices (BMPs). Activities include meetings with landowners in

West Tennessee watersheds to encourage soil testing and to use the results of the tests for appropriate rates of fertilizer application and the use of proper cover crops to reduce soil erosion.

The receiving stream has been assessed as unavailable of its fish and aquatic life designated use due to Nutrients. Previously, the division assessed a stream as unavailable of its designated uses due to Total Nitrogen (TN), Nitrate/Nitrite (Nitrite + Nitrate as N) and/or Total Phosphorus (TP). After reviewing the assessment process the division has begun to use the term “nutrients” as the cause instead of specifying TN, Nitrite + Nitrate as N or TP. The biological systems of a stream will utilize all of the nutrients. The primary driver of the nutrient impairment will often change as the biological processes continue in the stream. As such, identifying one specific nutrient driver (TN, Nitrite + Nitrate as N or TP) was not adequately conveying the causes of the stream’s impairment. Nitrates/Nitrites are a form of nitrogen, which include ammonia (NH<sub>3</sub>), nitrates (NO<sub>3</sub>), and nitrites (NO<sub>2</sub>). Therefore, the permit will implement limitations on both TN and TP only in the proposed permit.

Load limits equivalent to the average flow rate and average concentrations of total nitrogen and total phosphorus are the suggested treatment levels for discharges in the low impact category. These treatment levels would apply as a 12-month annual rolling average of effluent loads.

12.97 mg/L TN x 0.19 MGD x 8.34 x 365 days/yr = 7,502 lb/yr, as an annual rolling average

2.7 mg/L TP x 0.19 MGD x 8.34 x 365 days/yr = 1,562 lb/yr, as an annual rolling average

In coordination with the NRF and in recognition that meeting nutrient limits may require changes in plant operations, the Division has created the Tennessee Plant Optimization Program (TNPOP), which is a free program created to provide technical assistance and other resources to participating wastewater treatment plants. TNPOP can help wastewater treatment plants optimize energy use and nutrient removal, which can result in cost and energy savings. Interested facilities should visit the Division’s TNPOP website for a program description, frequently asked questions, and information on how to apply.

## 6.7. ***E. COLI***

Disinfection of wastewater is required to protect the receiving stream from pathogenic microorganisms. *E. coli* is used as an indicator organism as a measure of the bacteriological health of a receiving stream and the effectiveness of disinfection. Both the geometric mean and daily maximum are limited for *E. coli* in accordance with Rule 0400-40-03-.03. The *E. coli* daily maximum limit of 487 colony forming units per 100 mL applies to lakes and exceptional Tennessee waters. A maximum daily limit of 941 colony forming units per 100 mL applies to all other recreational waters. The units for *E. coli* have been standardized to #/100 mL, which is functionally equivalent to colony forming units.

## 6.8. **BIOMONITORING**

The Division evaluates all dischargers for reasonable potential to exceed the narrative water quality criterion “no toxics in toxic amounts”. The Division has determined that for municipal facilities with stream dilutions of less than 500 to 1, any of the following conditions may demonstrate reasonable potential to exceed this criterion:

- i. Toxicity is suspected or demonstrated;
- ii. A pretreatment program is required; or
- iii. The design capacity of the facility is greater than 1.0 MGD.

Because the design capacity of the facility does not exceed 1.0 MGD and a pretreatment program is not required, the facility is considered not to have the reasonable potential to violate the narrative water quality criterion, “no toxics in toxic amounts”. Therefore, toxicity testing is not required.

## 7. **COLLECTION SYSTEMS**

### 7.1. **COLLECTION SYSTEM CERTIFIED OPERATOR**

The collection system shall be operated under the supervision of a Grade 1 certified collection system operator in accordance with the Water Environmental Health Act of 1984.

### 7.2. **COLLECTION SYSTEM OPERATION**

For the purposes of demonstrating proper operation of the collection, transmission and treatment system, the permit treats releases separately from overflows and bypass. State regulations at 0400-40-05-.07(2) establish “standard conditions”. These standard conditions include 0400-40-05-.07(2)(n) that sets forth specific language prohibiting sanitary sewer overflows (defined in the regulations



as a “discharge”) and standard conditions in 0400-40-05-.07(2)(l) and (m) pertaining to bypass. While the regulations prohibit sanitary sewer overflow (*i.e.*, discharges that reach or are likely to reach receiving waters) it does not prohibit “releases” that do not reach or are not likely to reach receiving waters. However, releases that do not reach receiving waters may be indicative of other problems, such as improper operation and maintenance of the sewer system. Whether another violation occurs or whether, for example, there is an unavoidable accident (see, e.g., § 69-3-114(a)), will involve case-specific evaluations. Regardless, the permit assures, without waiving rights to pursue other violations associated with a release, as applicable, that the permittee would, at a minimum be reporting and responding to releases. Any release potentially warrants permittee mitigation of human health risks via direct or indirect contact and may demonstrate a hydraulic problem in the system that warrants permittee consideration as part of proper operation and maintenance of the system.

Proper operation and maintenance of the collection system may include, but is not limited to:

1. A comprehensive collection system map showing all drainage areas, manholes, pump stations (number and size of pumps), flow meters, chronic overflow and release locations, miles of collection system, material and diameter of construction, and other relevant system elements.
2. Rainfall data at location(s) using method(s) representative of precipitation within the collection system area.
3. Flow meters at locations in the collection system that would enable drainage area analysis and prioritization based on the amount of inflow and infiltration (I/I) observed.
4. A collection system hydraulic model that predicts I/I problems in response to rainfall events and the effects of new conditions.

When determining if a location experiences chronic sanitary sewer overflows or releases, the term “event(s)” includes dry weather overflows, wet weather overflows, dry weather releases and wet weather releases.

### **7.3. LOW PRESSURE SYSTEM OWNERSHIP/CONTROL**

On May 15, 2022, Tennessee Rule 0400-40-05 became effective. In those rules, clarifying language was added regarding low pressure systems. The Board received a comment during the rulemaking process noting that the inclusion of ownership or control of low pressure systems in Tennessee Rule 0400-40-06 governing land based disposal systems should be included Tennessee Rule 0400-

40-05 which governs discharging systems. The response to that comment is included below to provide direction to municipal agencies in implementing this condition of the permit.

*The Board agrees, and has added the following to Rule 0400-40-05-.07(2)(c) concerning proper operation and maintenance, "Low pressure pumps, low pressure tanks, septic tank effluent pumps (STEP), STEP tanks, and septic tank effluent gravity tanks are integral to the treatment and conveyance of sewage in a low-pressure system design, and shall be owned or under control of the municipality, other body of government, public utility district, or a privately-owned public utility demonstrating lawful jurisdiction over the service area." This permit condition is not applicable to pumps and appurtenances that are service lines to other than a low-pressure public system. This condition applies to sewer projects or extensions that are approved for construction after the effective date of the permit.*

*While the Board encourages direct ownership of the low pressure pumps and tanks, it does recognize that in some cases, operational control without direct asset ownership may suffice. The Board acknowledges that operational control may be implemented collectively by multiple local agencies. Operational control for privately-owned low pressure pumps and appurtenances appropriately includes the following:*

- *Legal mechanism e.g. local regulations, ordinance, plumbing codes, resolution etc. that provides the authority to:*
  - *Deny the use of low pressure pumps and tanks*
  - *Establish and enforce design standards*
  - *Access the site and equipment (including inspection)*
  - *Obtain remedies for non-compliance*
  - *Conduct an emergency response*
- *Plans review process to ensure compliance with the locally established design standards (including inspection of installation)*
- *Construction, inspection, and approval process*
- *Preventative and emergency maintenance program*

*In addition, all components of the sewerage system must be owned by a municipality, other body of government, public utility district, or a privately-owned public utility demonstrating lawful jurisdiction over the service area in accordance with Rule 0400-40-16-.02(8).*

## **8. OTHER PERMIT REQUIREMENTS AND CONDITIONS**

### **8.1. CERTIFIED WASTEWATER TREATMENT OPERATOR**

The waste treatment facilities shall be operated under the supervision of a Grade 3 certified wastewater treatment operator in accordance with the Water Environmental Health Act of 1984. Operator grades are under jurisdiction of the Water and Wastewater Operators Certification Board. This NPDES permit is under jurisdiction of the Tennessee Board of Water Quality, Oil and Gas. Operator grades are rated and recommended by the Division of Water Resources pursuant to Rule 0400-49-01 and are included in this fact sheet for reference. The grades are intentionally not specified in the permit so that the operation certification board can authorize changes in grade without conflicting with this permit.

### **8.2. PRETREATMENT PROGRAM**

The Town of Alexandria has received an exemption from development of a pretreatment program due to the lack of any significant industrial users.

### **8.3. BIOSOLIDS MANAGEMENT PRACTICES**

The Clean Water Act (CWA) requires that any NPDES permit issued to a publicly owned treatment works or any other treatment works treating domestic sewage shall comply with 40 CFR § 503, the federal regulation governing the use and disposal of sewage sludge. It is important to note that “biosolids” are sewage sludge that have been treated to a level so that they can be land applied.

The language in **section 3.3.** of the permit, relative to biosolids management, a CWA requirement, allows the “permitting authority” under 40 CFR § 503.9(p) to be able to enforce the provisions of § 503. The “permitting authority” relative to Part 503 is either a state that has been delegated biosolids management authority or the applicable EPA Region; for Tennessee it is EPA Region 4.

Tennessee regulates the land application of non-exceptional quality biosolids under state rules, Chapter 0400-40-15. The state rules became effective on June 30, 2013. Under these state rules, all facilities that land apply non-exceptional quality biosolids must obtain a biosolids permit from the division. The land application of non-exceptional quality biosolids under state rules is regulated through either a general permit or by an individual permit. Questions about the division’s biosolids regulations and permitting program should be directed to the State Biosolids Coordinator at:

*Division of Water Resources  
State Biosolids Coordinator  
William R. Snodgrass - Tennessee Tower  
312 Rosa L. Parks Avenue, 11th Floor  
Nashville, Tennessee 37243-1102  
615-532-0625*

#### **8.4. PERMIT TERM**

In order to meet the target reissuance date for the Caney Fork watershed and following the directives for the Watershed Management Program initiated in January 1996, the permit will be issued to expire in 2027.

#### **8.5. ELECTRONIC REPORTING**

The NPDES Electronic Reporting Rule (eRule), which became effective on December 21, 2016, replaces most paper-based reporting requirements with electronic reporting requirements. NetDMR allows NPDES permittees to submit DMRs electronically to EPA through a secure internet application and has been approved by Tennessee as the official electronic reporting tool for DMRs. The permittee has been reporting electronically via NetDMR since September 12, 2016.

Monitoring results shall be recorded monthly and submitted monthly using Discharge Monitoring Reports (DMRs) based on the effluent limits in **section 1.1** of the permit. DMRs and DMR attachments, including laboratory data and overflow reports, shall be submitted electronically in NetDMR or other electronic reporting tool approved by the State, no later than the 15th of the month following the end of the monitoring period. All NPDES program reports must be signed and certified by a responsible official or a duly authorized representative, as defined in 40 CFR § 122.22.

According to 40 CFR § 127.15, states have the flexibility to grant temporary or episodic waivers from electronic reporting to NPDES permittees who are unable to meet the electronic reporting requirements. To obtain an electronic reporting waiver, an electronic reporting waiver request must be submitted by email to [DWRwater.compliance@tn.gov](mailto:DWRwater.compliance@tn.gov) or by mail to the following address:

*Division of Water Resources  
Compliance and Enforcement Unit – NetDMR Waivers  
William R. Snodgrass Tennessee Tower  
312 Rosa L. Parks Avenue, 11th Floor  
Nashville, TN 37243-1102*

For contact and training information about NetDMR electronic reporting, visit the Division's website [here](#).

The permit language has been modified to accommodate the implementation of the MyTDEC Forms electronic reporting tool. For more information, visit EPA's website on [eReporting requirements](#).

#### **8.6. ANTIDegradation Statement / Water Quality Status**

Tennessee's Antidegradation Statement is found in the Rules of the Tennessee Department of Environment and Conservation, Chapter 0400-40-03-.06. It is the purpose of Tennessee's standards to fully protect existing uses of all surface waters as established under the Act.

Stream determinations for this permit action are associated with the waterbody segment identified by the Division as segment ID# TN05130108002\_2000.

The Division has made a water quality assessment of the receiving waters associated with the subject discharge(s) and has found the receiving stream to be neither an exceptional nor outstanding national resource water. Additionally, this water does not support designated uses due to nitrate/nitrite as N, total phosphorus, low dissolved oxygen and alteration in stream-side or littoral vegetative covers from grazing in riparian or shoreline zones, municipal point source discharges and grazing in riparian or shoreline zones. Nitrates/Nitrites are a form of nitrogen, which include ammonia (NH<sub>3</sub>), nitrates (NO<sub>3</sub>), and nitrites (NO<sub>2</sub>). Therefore, the permit will implement limitations on both TN and TP only in the proposed permit. See Section 6.6 of permit rationale.

Total Maximum Daily Loads (TMDLs) have been developed and approved for this waterbody segment on the following parameters and dates:

<u>Parameter:</u>	<u>TMDL Approval Date:</u>
Pathogens	September 19, 2005

The proposed terms and conditions of this permit comply with the wasteload allocations of these TMDLs.

## APPENDIX 1 – PREVIOUS PERMIT LIMITS

PARAMETERS	MONTHLY AVERAGE CONCENTRATION (MG/L)	MONTHLY AVERAGE AMOUNT (LB/DAY)	WEEKLY AVERAGE CONCENTRATION (MG/L)	WEEKLY AVERAGE AMOUNT (LB/DAY)	DAILY MAXIMUM CONCENTRATION (MG/L)	DAILY MINIMUM PERCENT REMOVAL	MEASUREMENT FREQUENCY
CBOD <sub>5</sub> (May 1- Oct. 31)	10	25	15	37.5	20	40	1/week
CBOD <sub>5</sub> (Nov. 1- April 30)	20	50	25	62.6	30	40	1/week
NH <sub>3</sub> -N (May 1- Oct. 31)	1.1	2.8	1.7	4.2	2.2	—	1/week
NH <sub>3</sub> -N (Nov. 1- April 30)	2.1	5.3	3.2	8	4.2	—	1/week
Total Suspended Solids	30	75	40	100	45	40	1/week
Dissolved Oxygen (mg/L)	6.0 (daily minimum instantaneous)	—	—	—	—	—	5/week
Total Nitrogen	Report	—	—	—	Report	—	1/week
NO3-NO2 as N	Report	3,935 lb/day Annual Rolling Average	—	—	Report	—	1/week
Total Phosphorus	Report	894 lb/day Annual Rolling Average	—	—	Report	—	1/week
<i>E. coli</i> (colonies/100ml)	126/100 ml	—	—	—	941/100 ml	—	3/week
Settleable Solids (ml/l)	—	—	—	—	1.0 (daily maximum)	—	3/week
pH (standard units)	6.0-9.0	—	—	—	—	—	5/week
Flow (MGD):							
Influent	Report	—	—	—	Report	—	7/week
Effluent	Report	—	—	—	Report	—	7/week
Sanitary Sewer Overflows, Total Occurrences					Report		continuous
Dry Weather Overflows, Total Occurrences					Report		continuous
Bypass of Treatment, Total Occurrences					Report		continuous

