

**STORMWATER POLLUTION PREVENTION PLAN**  
**TMSP Industrial Stormwater**  
**Prepared For:**

**VANHOUSECO**

**Blair Bend Road**  
**Loudon, Tennessee**



Prepared by:  
Land Development Solutions  
310 Simmons Rd., Suite K  
Knoxville, Tennessee 37922

June 18, 2019

## **SPILL RESPONSE PROCEDURES**

In the event of a petroleum or chemical spill, complete the following actions.

1. Contract a member of the Pollution Prevention Team. Team members have complete authority to take any appropriate action to correct the problem situation.
2. Move all ignition sources away from the spill area. If ignition sources are stationary (e.g., furnaces, etc.), then disable and lock-out ignition sources.
3. Utilize plugging compounds, valves, pumps, or other means, to prevent further spillage, if possible.
4. Contain spilled material utilizing inert material (e.g., dirt, bags of granular clay, sand bags, etc.).
5. If spilled material is released into surface waters via the storm drainage system, notify the appropriate agencies immediately.
6. Utilize the appropriate absorbent material to remove floating fuels in water.
7. Utilizing appropriate equipment and trained personnel, pump contained spilled materials into appropriate containers.
8. Contain contaminated materials in appropriate containers and dispose of in accordance with local, state and federal regulations.
9. A spill report summary shall be completed by the Plant Manager with copies to appropriate personnel. All spill reports shall be retained permanently. The report shall contain the following elements:
  - Date of spill
  - Identification of material spilled
  - Location and area of spill
  - Results of spill as to runoff and amount
  - Actions taken and outcome
  - Confirmation that appropriate notification procedure was followed
  - Preventive action to be taken to correct cause of spill

**STORMWATER POLLUTION PREVENTION PLAN CONTACT LIST**

<b>Pollution Prevention Team</b>	<b>Title</b>	<b>Phone Numbers</b>
Jeff VanHoose	President	865-458-3998
Larry Trent	Plant Manager	865-458-3998
Don Atkins	Safety Manager	865-458-3998

<b>Regulatory Agency</b>	<b>Phone Number</b>	<b>Address</b>
National Response Center (For Oil and Chemical Spills)	800-424-8802 202-267-2675 (24-Hr Spill Hotline)	c/o United States Coast Guard (G-OPF)-Room 2611 2100 2 <sup>nd</sup> Street SW Washington, D.C. 20593
Environmental Protection Agency - Region 4	404-562-8700 (24-Hr Spill Reporting)	Sam Nunn Atlanta Federal Center 61 Forsyth Street, SW Atlanta, GA 30303
Tennessee Emergency Man- agement Agency(TEMA)	800-262-3300	3041 Sidco Drive Nashville, TN 37204
Tennessee Department of En- vironment and Conservation (TDEC)-Division of Water Pollution Control	615-532-0625	6 <sup>th</sup> Floor, L&C Annex 401 Church Street Nashville, TN 37243
Loudon County Emergency Management Agency	865-988-0175	12680 Highway 11 West, Suite 5 Lenoir City, TN 37771

## **APPLICABILITY**

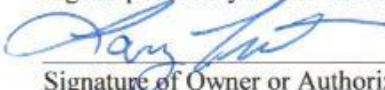
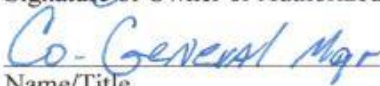
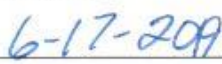
The development and implementation of a Storm Water Pollution and Prevention Plan (SWPPP) is required for each facility covered by the State of Tennessee General National Pollutant Discharge Elimination System (NPDES) Permit for discharges of storm water runoff and process wastewater associated with ready mix concrete facilities.

Development, implementation, and maintenance of the SWPPP will provide VANHOOSECO with tools to reduce pollutants contained in storm water discharges and comply with permit requirements. The SWPPP will identify potential sources of pollution from the VANHOOSECO facility that may reasonably be expected to affect the quality of storm water discharges associated with industrial activity at the site. In addition, the SWPPP will describe practices that are to be used to prevent or control the release of pollutants in storm water discharges. The effectiveness of the SWPPP will be periodically evaluated to ensure management practices are appropriate for current facility conditions.

**CERTIFICATIONS**

**NON-STORM WATER DISCHARGES:**

I certify under penalty of law that this document and all attachments were prepared under my direction or supervision in accordance with a system designed to assure that qualified personnel properly gather and evaluate the information submitted. Based on my inquiry of the person or persons who manage the system, or those persons directly responsible for gathering the information, the information submitted is, to the best of my knowledge and belief, true, accurate, and complete. I am aware that there are significant penalties for submitting false information, including the possibility of fine and imprisonment for knowing violations.

  
\_\_\_\_\_  
Signature of Owner or Authorized Representative  
  
\_\_\_\_\_  
Name/Title  
  
\_\_\_\_\_  
Date

**TABLE OF CONTENTS**

SPILL RESPONSE PROCEDURES.....2  
STORM WATER POLLUTION PREVENTION CONTACT LIST.....3  
APPLICABILITY.....4  
CERTIFICATIONS.....5

1.0 FACILITY INFORMATION.....8  
    1.1 Facility Location.....8  
    1.2 Facility Activities.....8  
    1.3 Facility Description.....8  
    1.4 Facility Drainage System.....8

2.0 DESCRIPTION OF POTENTIAL POLLUTANT SOURCES.....12  
    2.1 Inventory of Materials.....13  
    2.2 Summary of Potential Pollutant Sources.....14  
    2.3 Spills and Leaks.....14  
    2.4 Sampling Data.....14

3.0 POLLUTION PREVENTION TEAM.....15

4.0 MEASURES AND CONTROL.....15  
    4.1 Good Housekeeping.....15  
    4.2 Preventative Maintenance.....15  
    4.3 Spill Prevention and Response Procedures.....15  
    4.4 Employee Training.....15

5.0 NON-STORM WATER DISCHARGES.....16

6.0 INSPECTIONS.....16  
    6.1 Monthly Inspections.....16  
    6.2 Semi-Annual Site Compliance Evaluation.....16

7.0 MONITORING.....17  
    7.1 Monthly Monitoring – Process Wastewater.....17  
    7.2 Annual Monitoring – Stormwater.....17

8.0 RECORDKEEPING REQUIREMENTS.....18

FIGURES

Figure 1 – Site NOI Map

Figure 2 – TMSP Site Map

Figure 3 – Facility Drainage Patterns

TABLES

Table 1 – Inventory of Significant Materials

INSPECTION FORMS

Spills and Leaks Form

Employee Training Form

Quarterly Visual Inspection Form

Annual Stormwater Monitoring Report

List of TDEC approved Water Testing Laboratories

PERMIT ATTACHMENTS

Notice of Intent TMSP - General Industrial

## **1.0 FACILITY INFORMATION**

VANHOUSECO is a privately owned and operated company. The 33 acre property is located in the Blair Bend Industrial Park in Loudon, TN. It was purchased in 2007. The lot is generally wooded bordered by Watts Bar Reservoir to the south. This section describes the facility location, activities and drainage system.

### **1.1 Facility Location**

VANHOUSECO is located in the Blair Bend Industrial Park off of Blair Bend Road in Loudon, Tennessee. The facility location is presented on the NOI Map. The facility is bounded to the north by Blair Bend Road, to the east and west by industrial properties, and to the south by the Tennessee River (Watts Bar Reservoir).

### **1.2 Facility Activities**

This facility has the primary Standard Industrial Classification (SIC) Codes of 3272 & 3273 – Concrete Products. The ready-mix plants consist of an aggregate dump hopper, aggregate storage bin, and central mixer. The industrial areas consist of an office, precast manufacturing area, and storage areas. A truck washdown area is utilized to washdown trucks after each delivery, and at the end of each work day. The locations of the operational areas and material storage areas are shown in Figure 2. Typically the facility operates up to 10 hours a day, 6 days per week.

### **1.3 Facility Description**

The total area of the property is 33 acres. The ready mix operation uses 3.0± acres of the property. Approximately 2.7 acres are impervious areas used for the two precast plants, 12.0 acres are gravel material storage and parking areas, and the remaining 18.3± is grass-wooded and non-developed land.

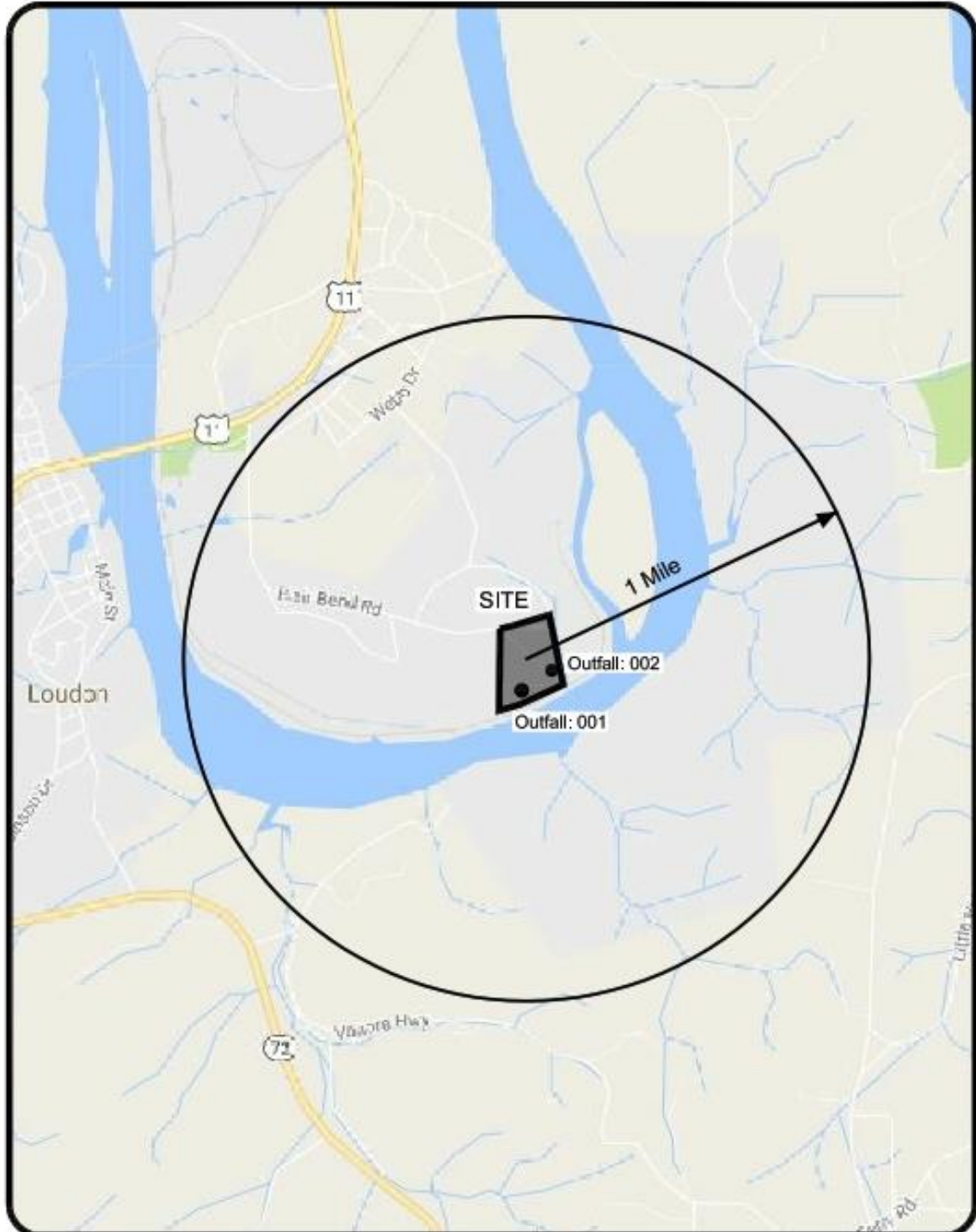
### **1.4 Facility Drainage System**

The ready mix portions of the site drains to the south towards the Tennessee River. The runoff from the ready mix sites will enter a process pond where the solids in the runoff can settle into the pond before being discharged from the pond and flowing into the Tennessee River. To prevent too much large solids from entering the pond, the truck washdown area is designed to capture the large diameter aggregate before the washwater enters the pond. All solids removed from the pond and washdown area are to be disposed of in a legal manner.

The industrial operations on site (concrete precast and pipe plant) have drainage systems that were previously designed to pass surface runoff from the site to the south towards the Tennessee River. The storm system outlets in two locations: at the bottom of the south slope and the bottom of the east slope. All stormwater runoff is directed to one of two settling basins at the bottom of these slopes where any suspended solids in the runoff are further dissipated before exiting the site. See Figure 3 for the facility drainage patterns and Outfall Locations.



Figure 1 – NOI Map




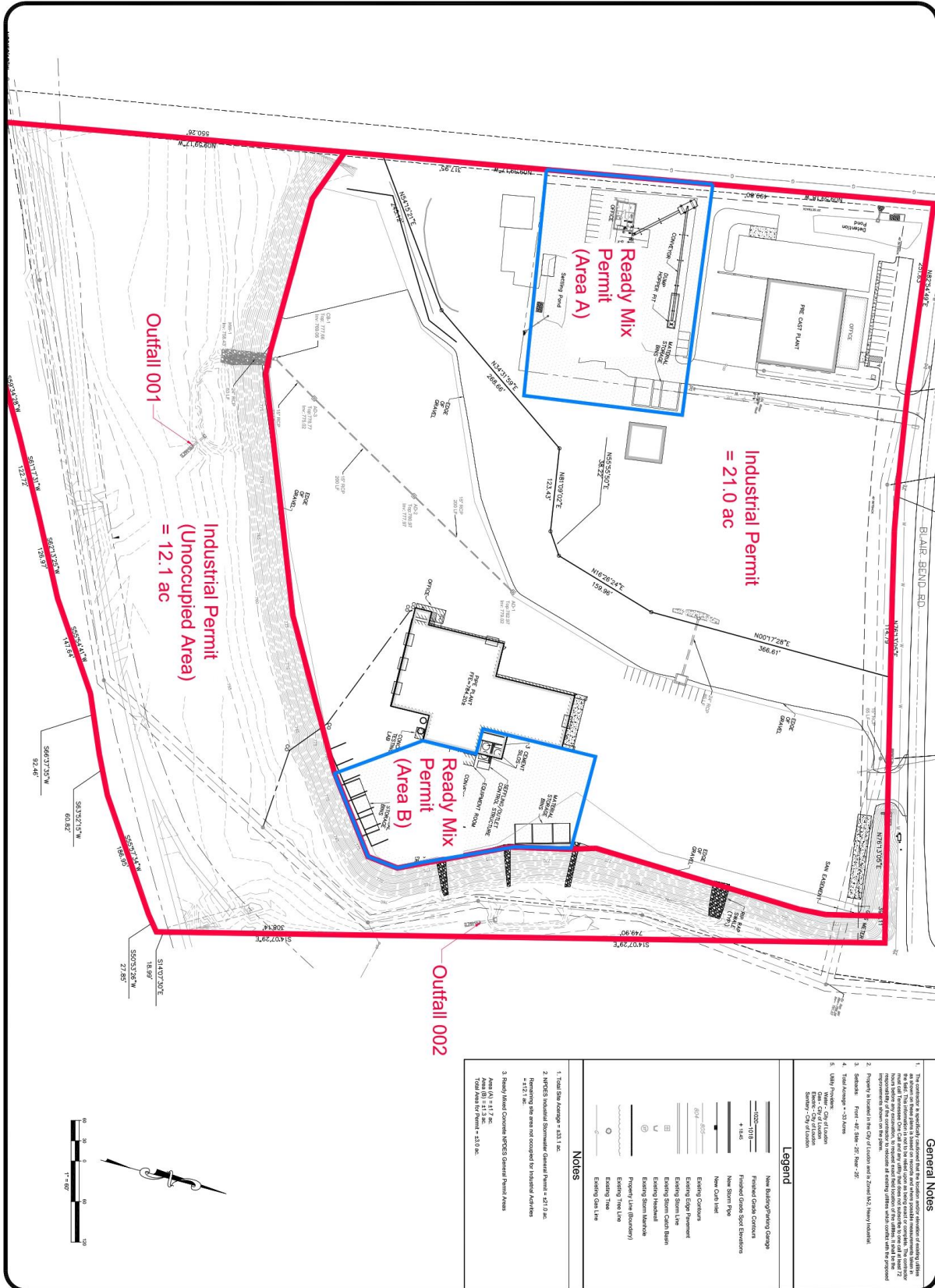
 <b>LAND DEVELOPMENT SOLUTIONS</b> 310 SIMMONS RD., SUITE K-KNOXVILLE, TENNESSEE 37922 PH: 865-671-2281	Project: <b>VanHooseCo, LLC Blair Bend Rd. NOI Map Loudon, Tennessee</b>	Drawn By	
		Checked	
		Approved	
		Job No.	
Scale: N.T.S.	Sheet No.		
Date: 6-1-19	1		

Figure 2 – TMSP Site Map

X:\Eddie\Vanhoose 2017 Improvements\dwg\TDEC Permits\TDEC Schematic 2018.dwg Jun 06, 2019 - 12:04pm rdesing - LDS Copyright 2019



**General Notes**

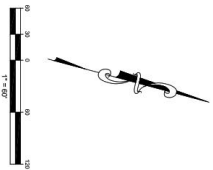
1. The information on this drawing was prepared by the engineer based on information provided by the client. The engineer is not responsible for the accuracy of the information provided by the client.
2. The information on this drawing was prepared by the engineer based on information provided by the client. The engineer is not responsible for the accuracy of the information provided by the client.
3. The information on this drawing was prepared by the engineer based on information provided by the client. The engineer is not responsible for the accuracy of the information provided by the client.
4. The information on this drawing was prepared by the engineer based on information provided by the client. The engineer is not responsible for the accuracy of the information provided by the client.
5. The information on this drawing was prepared by the engineer based on information provided by the client. The engineer is not responsible for the accuracy of the information provided by the client.

**Legend**

- New Building/Permitting Garage
- Finished Grade Contours
- Finished Grade Spot Elevations
- New Storm Pipe
- New Catch Basin
- Existing Contours
- Existing Elevation
- Existing Storm Line
- Existing Storm Catch Basin
- Existing Roadway
- Existing Storm Manhole
- Property Line (Boundary)
- Existing New Line
- Existing Old Line

**NOTES**

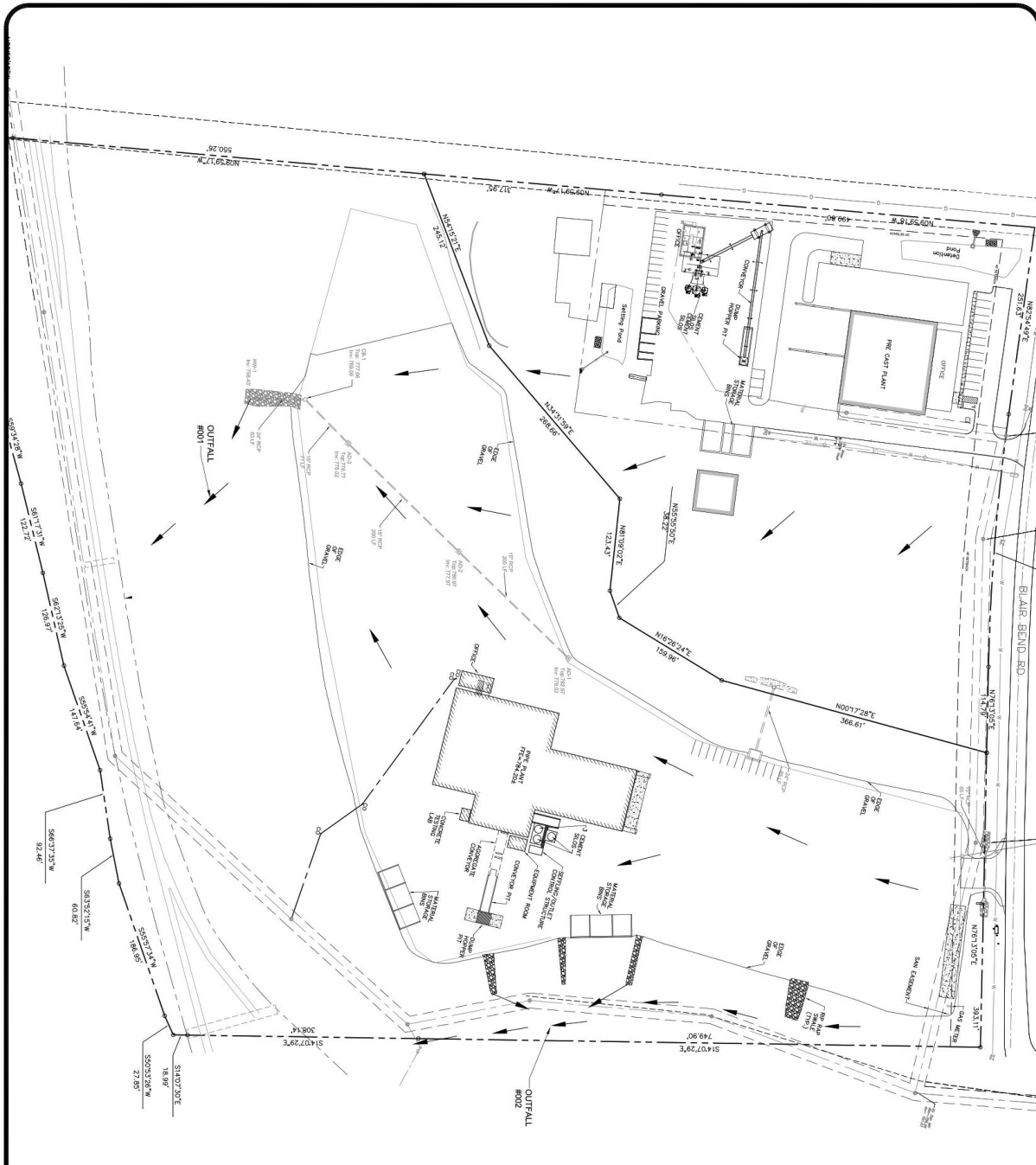
1. Total Site Area = 433.1 ac.
2. 100% Industrial Stormwater Detention Permit = 201.0 ac.
3. Ready Mixed Concrete (RMC) Detention Permit Areas = 12.1 ac.
4. Total Area for Permit = 213.0 ac.



<p><b>C000</b></p> <p>17-007</p> <p>300/06</p> <p>0/00</p>	<p>Checked by: EJB</p> <p>Designed by: EJB</p> <p>Date: 06/06/19</p>	<p>Drawing Description:</p> <p><b>Stormwater Permit Site Map</b></p>	<p><b>LAND DEVELOPMENT SOLUTIONS</b></p> <p>310 SIMMONS RD., SUITE K-KNOXVILLE, TENNESSEE 37922</p> <p>PH. 865-671-2281</p>	<p>Project:</p> <p><b>VANHOUSECO</b></p> <p>244 BLAIR BEND DRIVE</p> <p>Loudon, Tennessee</p>					
	<table border="1"> <thead> <tr> <th>No.</th> <th>Date</th> <th>Revision</th> </tr> </thead> <tbody> <tr> <td> </td> <td> </td> <td> </td> </tr> </tbody> </table>	No.	Date	Revision				<p>Drawing Description:</p> <p><b>Stormwater Permit Site Map</b></p>	<p><b>LAND DEVELOPMENT SOLUTIONS</b></p> <p>310 SIMMONS RD., SUITE K-KNOXVILLE, TENNESSEE 37922</p> <p>PH. 865-671-2281</p>
No.	Date	Revision							

Figure 3 – Site Drainage Patterns

X:\Eddie\Vanhouse 2017 Improvements\dwg\TDEC Permits\TDEC Schematic 2018.dwg Jun 08, 2019 - 12:26pm rdeising - LDS Copyright 2019



**General Notes**

- The contractor shall be responsible for obtaining all necessary permits from the local, state, and federal agencies. The contractor shall be responsible for obtaining all necessary permits from the local, state, and federal agencies. The contractor shall be responsible for obtaining all necessary permits from the local, state, and federal agencies.
- The contractor shall be responsible for obtaining all necessary permits from the local, state, and federal agencies. The contractor shall be responsible for obtaining all necessary permits from the local, state, and federal agencies. The contractor shall be responsible for obtaining all necessary permits from the local, state, and federal agencies.
- The contractor shall be responsible for obtaining all necessary permits from the local, state, and federal agencies. The contractor shall be responsible for obtaining all necessary permits from the local, state, and federal agencies. The contractor shall be responsible for obtaining all necessary permits from the local, state, and federal agencies.

**Legend**

- New Building/Existing Change
- Finished Grade Contours
- Proposed Stormwater Drainage
- Proposed Stormwater Pipe
- Proposed Stormwater Structure
- Proposed Stormwater Basin
- Proposed Stormwater Outlet
- Proposed Stormwater Inlet
- Proposed Stormwater Manhole
- Proposed Stormwater Valve
- Proposed Stormwater Weir
- Proposed Stormwater Culvert
- Proposed Stormwater Bridge
- Proposed Stormwater Trench
- Proposed Stormwater Ditch
- Proposed Stormwater Channel
- Proposed Stormwater Pond
- Proposed Stormwater Reservoir
- Proposed Stormwater Lake
- Proposed Stormwater Stream
- Proposed Stormwater River
- Proposed Stormwater Bay
- Proposed Stormwater Sound
- Proposed Stormwater Strait
- Proposed Stormwater Trench
- Proposed Stormwater Ditch
- Proposed Stormwater Channel
- Proposed Stormwater Pond
- Proposed Stormwater Reservoir
- Proposed Stormwater Lake
- Proposed Stormwater Stream
- Proposed Stormwater River
- Proposed Stormwater Bay
- Proposed Stormwater Sound
- Proposed Stormwater Strait

<b>C001</b>	Drawing Description: <b>Stormwater Permit Site Map</b>	<p><b>LAND DEVELOPMENT SOLUTIONS</b> 310 SIMMONS RD., SUITE K-KNOXVILLE, TENNESSEE 37922 PH. 865-671-2281</p>	<p>Project: <b>VANHOUSECO</b> 244 BLAIR BEND DRIVE Loudon, Tennessee</p>																				
<table border="1" style="width: 100%; border-collapse: collapse;"> <tr><th>Drawn By</th><td>EAB</td></tr> <tr><th>Checked</th><td>EAB</td></tr> <tr><th>Approved</th><td>EAB</td></tr> <tr><th>Date</th><td>06/08/19</td></tr> </table>	Drawn By	EAB	Checked	EAB	Approved	EAB	Date	06/08/19	<table border="1" style="width: 100%; border-collapse: collapse;"> <tr><th>No.</th><th>Date</th><th>Revision</th></tr> <tr><td> </td><td> </td><td> </td></tr> <tr><td> </td><td> </td><td> </td></tr> <tr><td> </td><td> </td><td> </td></tr> </table>	No.	Date	Revision											
Drawn By	EAB																						
Checked	EAB																						
Approved	EAB																						
Date	06/08/19																						
No.	Date	Revision																					

## 2.0 DESCRIPTION OF POTENTIAL POLLUTANT SOURCES

This section identifies significant materials located at the facility and a summary of potential pollutant sources for storm runoff.

### 2.1 Inventory of Materials

Table 1 presents a significant material inventory for the VANHOUSECO ready mix facility with additional details including storage container and location, unloading/loading exposure, and maximum storage quantities. Types of materials stored at the site include, but are not limited to:

- Raw materials for concrete production (sand, stone, cement, fly ash, additives)
- Petroleum products
- Waste concrete

**Table 1 - Inventory of Significant Materials as of May 2019**

<b>Material</b>	<b>Storage Container</b>	<b>Storage Location</b>	<b>Loading/Unloading</b>
Sand	Aggregate Bin	Outside, covered	Exposed
Stone	Aggregate Bin	Outside, covered	Exposed
Cement	Silo	Outside, covered	Pneumatic loading - silo equipped with dust collector; transfer to enclosed mixer
Fly Ash	Silo	Outside, covered	Pneumatic loading - silo equipped with dust collector; transfer to enclosed mixer
Waste Concrete, truck washout	On ground	Outside	Exposed
Fuel Tanks	Tanks	Outside	Closed System
Precast Release Solvents	Closed Containers	Indoors	Not Exposed

## 2.2 Summary of Potential Pollutant Sources

The potential pollutant sources at the VANHOOSECO ready mix facility include:

### Petroleum (Vehicle Parking)

Facility vehicles and employee vehicles drive by and park in the facility drainage area. Stormwater could be potentially impacted by leaking fluids from these vehicles.

Pollutant Source	Flow Direction	Receiving Stream
Diesel Fuel (on and off road)	South-southeast to process pond	Tennessee River
Vehicle gasoline and engine oil	South-southeast to process pond	Tennessee River

### Concrete Batch Plant (Raw Material Storage, Waste Material Storage)

Sand and stone are brought to the site as raw materials for concrete and are emptied into the dump hoppers by means of covered dump trucks. The sand and stone is transferred from the dump hopper to the aggregate storage bin by means of an enclosed conveyor. Excess sand and gravel not ready to be placed in the dump hopper will be stored on a gravel area near the dump hopper. Stormwater from the storage areas and dump hopper could potentially be impacted by runoff from storage piles and spills during transfer.

Cement and fly ash are brought to the site as raw materials for concrete. These materials are transferred using a pneumatic process to silos, which are equipped with dust controls. During operation of the batch plant, the transfer of cement and fly ash to the mixer is fully enclosed. Stormwater could potentially be impacted if there was a failure in the hoses during the transfer process.

Waste concrete from the washing down the trucks will be contained in the truck washdown. This area will contain the larger solids. From the truck washdown area the runoff will flow to the process pond where the smaller solids will settle to the bottom of the pond. Periodically the waste solids will be removed from the washdown area and the process pond and disposed of in a legal manner.

**Table 2 – Possible Pollution Sources**

Pollutant Source	Flow Direction	Receiving Stream
Stone and Sand	South-southeast to process ponds	Tennessee River
Cement and fly ash	South-southeast to process ponds	Tennessee River
Waste from truck washdown	South-southeast to washdown area and process ponds	Tennessee River

## 2.3 Spills and Leaks

There have not been any significant spills incidents in uncovered areas of the facility that may have impacted stormwater in the past three years.

## 2.4 Sampling Data

Sampling of facility process wastewater and stormwater runoff has not been conducted to date.

## 3.0 POLLUTION PREVENTION TEAM

The pollution prevention team will be responsible for the following:

- Implementing all permit and SWPPP requirements
- Defining and agreeing upon an appropriate set of goals for the facility's stormwater management program
- Being aware of any changes that are made in the facility's operations to determine whether any changes must be made in the SWPPP.

In addition to the team responsibilities, the individual team members will be responsible for the following:

### President:

1. Being acquainted with all procedures necessary for material handling and preventative measures for material losses.
2. Being versed in all procedures required to contain any type of spill emergency.
3. Ensuring all SWPPP procedures are strictly adhered to and all SWPPP inspections and monitoring are conducted and recorded.
4. Ensuring that the SWPPP is maintained on site and copies of the plan are submitted to the Tennessee Department of Environment and Conservation Division of Water Pollution Control office within ten working days of a request.

### Plant Manager:

1. Being acquainted with all procedures necessary for material handling and preventative measures for material losses.
2. Facilitating proper housekeeping, material storage, and training.
3. Being versed in all procedures required to contain any type of spill emergency.
4. Ensuring semi-annual inspections of the facility are completed to check accuracy of the plan, maps, and whether measures in the plan to reduce pollutants in stormwater are adequate.
5. Reviewing and updating the SWPPP at least annually.
6. Ensuring all stormwater monitoring is completed, all monitoring reports are prepared, and documentation is retained with environmental files at the facility.
7. Ensuring employee training is periodically completed.
8. Recording incidents such as spills or other discharges. Response actions must be recorded.

### Safety Manager

1. Providing resources as needed to implement SWPPP.
2. Being knowledgeable in all local, State and Federal regulations, and corporate policies concerning stormwater.

## **4.0 MEASURES AND CONTROLS**

This section describes the stormwater management controls to be implemented at this facility. The measures and controls described below have been selected because they are the most appropriate for implementation at the VANHOSECO ready mix facility based on the potential pollutants at the facility and the facility operations.

### **4.1 Good Housekeeping**

Good housekeeping is a best management practice utilized at the facility to prevent stormwater pollution. The facility shall be kept neat and orderly. In particular, the following items must be addressed:

- Items must be stored in a neat and orderly manner. Any open containers stored outside must be covered to the extent feasible.
- Spillage of any material must be cleaned up immediately. Work must stop in the area until the spillage is removed and properly containerized.

### **4.2 Preventative Maintenance**

The following activities are conducted by facility personnel to prevent the release of pollutants that may impact stormwater runoff.

- Maintenance is regularly conducted on all facility equipment to avoid leaks of oil or other fluids.

### **4.3 Spill Prevention and Response Procedures**

Should a spill occur at the facility, spill response procedures have been developed and are listed on the page titled *Spill Response Procedures* of this plan. Some materials at the facility are flammable or combustible. Precautions must be taken during spill response actions to prevent the ignition of spilled materials.

### **4.4 Employee Training**

Employees of all levels of responsibility shall be trained in the components and goals of the SWPPP at least annually. The training shall include the following:

- Pollution control laws and regulations
- Stormwater Pollution Prevention Plan

- Measures and Controls
- Spill prevention and response
- Good housekeeping
- Material management practices
- Information for Contractor or temporary personnel

Documentation of the training should be maintained in the facility environmental files. Please see the employee training form provided later in this document to be maintained on-site.

## **5.0 NON-STORMWATER DISCHARGES**

The NPDES General Permit requires that an evaluation be completed at the facility to evaluate the presence of non-stormwater discharges. No non-stormwater discharges will be present other than the process wastewater from truck washdowns as allowed by the General NPDES permit. The certification for non-stormwater is provided in this plan.

## **6.0 INSPECTIONS**

Facility inspections are required by the General NPDES Permit. This section describes the types of inspections to be performed by qualified individuals at the facility.

### **6.1 Monthly Inspections**

Monthly inspections of the areas of the facility where potential for exposure to stormwater exists shall be performed. The inspections shall evaluate loading and unloading areas, storage areas, and any other area of industrial activity. The inspections should be completed by the Plant Manager or designee. An inspection form is provided as an attachment to this plan. An inspection form should be completed and maintained onsite with the environmental files. Deficiencies observed during the inspections should be brought to the attention of the Plant Manager and corrective actions completed in a timely manner.

### **6.2 Semi-Annual Site Compliance Evaluation**

A site compliance evaluation shall be conducted no less than once every six months. This inspection is to be conducted by qualified personnel such as the Plant Manager or his designee. The following items shall be evaluated:

- Visually inspect areas contributing to a stormwater discharge associated with industrial activity for evidence of, or the potential for, pollutants entering the drainage system.
- Visually inspect equipment needed to implement the plan, such as spill response equipment.



- Evaluate measures taken to reduce pollutant loadings and determine whether that are adequate and properly implemented in accordance with the terms of the permit or whether additional control measures are needed.
- Observe structural stormwater management measures and other structural measures to ensure that they are operating correctly, such as:
  1. Material Storage Bins
  2. Material loading and unloading areas
  3. Settling basins for process water
  4. Inlet & Outlet Headwalls

Based on the results of the inspection, revisions to the Stormwater Pollution Prevention Plan may be necessary. Plan revisions shall be completed as appropriate within two weeks of inspection and implementation of any changes described in the plan should be performed in a timely manner, but in no case more than 12 weeks after the inspection.

A report summarizing the scope of the inspection, personnel making the inspection, the date of the inspection, major observations relating to the implementation of the plan, and actions taken to correct the plan shall be made and retained as part of the plan for at least three years after the inspection and one year after coverage under this permit terminates. The report shall identify any incidents of noncompliance with the Stormwater Pollution Prevention Plan and permit. A Site Compliance Evaluation Form is included as an attachment and can be completed to satisfy this report requirement. This report shall not be submitted to the Division of Water Pollution Control unless specifically requested in writing.

## 7.0 MONITORING

### 7.1 Quarterly Visual Inspection - Stormwater

Quarterly visual monitoring is required for all significant outfalls. Significant outfalls are those labeled on the Site Map Figure. A member of the Pollution Prevention Team must be responsible for performing the visual inspections as well as ensuring records are kept on site. These visual inspections will be checking for color, quality Quarterly Visual Assessment reports must be readily available to TDEC if requested.

### 7.2 Annual Monitoring – Stormwater

Annual monitoring and reporting of the quality of stormwater discharge is required at each Outfall as shown on the Site Map. Samples shall be analyzed for **TSS, pH, and total recoverable iron**. A grab sample shall be collected once a year at the outfall when no process wastewater is discharging at the time of sample collection.

The TDEC Division of water resources Annual Stormwater Monitoring Report (Form CN-1115) can be found on the TDEC website in association with the TMSP Permits. The original signed stormwater monitoring report is due to the by March 31<sup>st</sup> of each new year. A copy of the completed Annual Stormwater Monitoring Report should be maintained on site along with the Quarterly Visual Inspection Forms, SWPPP, and sampling records.

The analytical results, when received, shall be evaluated to determine whether the facility is below, meets, or exceeds the monitoring cut-off concentrations, the TDEC Knoxville Environmental Assistance Center should be notified in writing within 30 days from the time the stormwater monitoring results were received describing the likely cause of the exceedance. Within 60 days, the SWPPP must be reviewed and modifications made as necessary to reduce the specific parameter(s) that were exceeded to below the monitoring cut-off concentrations. A brief summary of the proposed SWPPP modifications shall be submitted to the TDEC Knoxville Environmental Assistance Center.

The following procedures should be followed to collect the sample and document observations:

- Examinations shall be made of a grab sample collected within the first 30 minutes of when a stormwater runoff begins.
- All stormwater samples shall be collected from the discharge resulting from a storm event that is greater than 0.1 inches in magnitude and that occurs at least 72 hours from the previously measurable storm event.
- The examiner shall document observations as indicated on the Stormwater Visual Examination Form included as an attachment to this plan. The examination shall document observations of color, odor, clarity, floating solids, settled solids, suspended solids, foam, oil sheen, and other obvious indicators of stormwater pollution. The stormwater sample examination must be conducted in a well lit area.
- If an appropriate stormwater sample cannot be obtained because of adverse weather conditions, the reason for not obtaining the sample must be documented on the Stormwater Visual Examination Form. These reasons can include dangerous weather conditions (such as local flooding, high winds, hurricane, tornadoes, electrical storms, etc.) or other weather conditions which make the collection of the sample impracticable(drought, etc.)

## **8.0 RECORDKEEPING REQUIREMENTS**

The SWPPP must be maintained for at least three years from the last update and at least one year after coverage after the General NPDES permit terminates. The associated monitoring forms, inspections, and maintenance activity records must be retained at least three years from the date of generation. The Division of Water Pollution Control may extend this period upon request at any time and the facility must submit any such records to the Division of Water Pollution Control upon request. In addition, spill reports must be maintained at the facility.

### SPILLS AND LEAKS

A list of significant spills and leaks of toxic or hazardous pollutants that occurred at areas that are exposed to precipitation or that otherwise drain to a Stormwater conveyance.

DATE OF INCIDENT:	
LOCATION OF INCIDENT:	
DESCRIPTION OF INCIDENT:	
CIRCUMSTANCES LEADING TO RELEASE:	
ACTIONS TAKEN IN RESPONSE TO RELEASE:	
MEASURES TAKEN TO PREVENT RECURRENCE:	
DATE OF INCIDENT:	
LOCATION OF INCIDENT:	
DESCRIPTION OF INCIDENT:	
CIRCUMSTANCES LEADING TO RELEASE:	
ACTIONS TAKEN IN RESPONSE TO RELEASE:	
MEASURES TAKEN TO PREVENT RECURRENCE:	
DATE OF INCIDENT:	
LOCATION OF INCIDENT:	
DESCRIPTION OF INCIDENT:	
CIRCUMSTANCES LEADING TO RELEASE:	
ACTIONS TAKEN IN RESPONSE TO RELEASE:	
MEASURES TAKEN TO PREVENT RECURRENCE:	

**EMPLOYEE TRAINING**

Training should address topics such as spill response, good housekeeping, and material management practices. The pollution prevention plan shall identify periodic dates for training.

Training Date	
Training Description	
Trainer	
Employee(s) Trained	Employee Signature

Training Date	
Training Description	
Trainer	
Employee(s) Trained	Employee Signature

Training Date	
Training Description	
Trainer	
Employee(s) Trained	Employee Signature

## MSGP Quarterly Visual Assessment Form

(Complete a separate form for each outfall you assess)

Name of Facility: Name of Facility

NPDES Tracking No. Insert Tracking No.

Outfall Name: Name \*Substantially Identical Outfall"?  No  Yes (identify substantially identical outfalls):

Person(s)/Title(s) collecting sample: Name/Title

Person(s)/Title(s) examining sample: Name/Title

Date & Time Discharge Began:

Date & Time Sample Collected:

Date & Time Sample Examined:

Enter date and time

Enter date and time

Enter date and time

Substitute Sample?  No  Yes (identify quarter/year when sample was originally scheduled to be collected):

Nature of Discharge:  Rainfall  Snowmelt

If rainfall: Rainfall Amount: No of inches inches Previous Storm Ended > 72 hours  Yes  No\* (explain):  
Before Start of This Storm?

### Parameter

Color  None  Other (describe):

Odor  None  Musty  Sewage  Sulfur  Sour  Petroleum/Gas \_\_\_\_\_  
 Solvents  Other (describe):

Clarity  Clear  Slightly Cloudy  Cloudy  Opaque  Other

Floating Solids  No  Yes (describe):

Settled Solids\*\*  No  Yes (describe):

Suspended Solids  No  Yes (describe):

Foam (gently shake sample)  No  Yes (describe):

Oil Sheen  None  Flecks  Globbs  Sheen  Slick  
 Other (describe):

Other Obvious Indicators  No  Yes (describe):  
of Stormwater Pollution

\* The 72-hour interval can be waived when the previous storm did not yield a measurable discharge or if you are able to document (attach applicable documentation) that less than a 72-hour interval is representative of local storm events during the sampling period.

\*\* Observe for settled solids after allowing the sample to sit for approximately one-half hour.

**Detail any concerns, additional comments, descriptions of pictures taken, and any corrective actions taken below (attach additional sheets as necessary). Insert details**

### Certification by Facility Responsible Official (Refer to MSGP Subpart 11 Appendix B for Signatory Requirements)

I certify under penalty of law that this document and all attachments were prepared under my direction or supervision in accordance with a system designed to assure that qualified personnel properly gathered and evaluated the information submitted. Based on my inquiry of the person or persons who manage the system, or those persons directly responsible for gathering the information, the information submitted is, to the best of my knowledge and belief, true, accurate, and complete. I am aware that there are significant penalties for submitting false information, including the possibility of fine and imprisonment for knowing violations.

A. Name:

B. Title:

C. Signature:

D. Date Signed:



**DEPARTMENT OF ENVIRONMENT AND CONSERVATION  
DIVISION OF WATER RESOURCES**

William R. Snodgrass - Tennessee Tower  
312 Rosa L. Parks Avenue, 11th Floor  
Nashville, Tennessee 37243-1102  
(615) 532-0625

**ANNUAL STORMWATER MONITORING REPORT**  
for Stormwater Discharges Associated with Industrial Activity under the  
**TENNESSEE MULTI-SECTOR GENERAL PERMIT (TMSP)**

Facility Name:	VanHooseCo, LLC	TMSP Number:	
Contact Person:	Larry Trent	Phone Number:	(865)-458-3998
This report is submitted for the following calendar year (e.g. 2015):		Outfall Number:	
List all TMSP sectors which apply to discharge from this outfall:	3272, 3273	Sample Date:	
Low Concentration Waiver (Note 3): list all parameters for which the facility is certifying that there has not been a significant change in industrial activity or the pollution prevention measures in the area of the facility that drains to the outfall for which sampling was waived:			

**DIRECTIONS:**

In the spaces below, provide the results of stormwater monitoring for the designated outfall. For each outfall, one Annual Stormwater Monitoring Report must be submitted. The parameters for which monitoring must be conducted depend on which industry sector(s) of the TMSP applies to the discharge. Look up your sector(s) in the TMSP and analyze for the parameters that apply. If parameter is not listed below, submit additional sheets. All samples should be grab.

Parameter	Cut-off Conc. (mg/L)	Annual Sample Result (mg/L)	Parameter (continued)	Cut-off Conc. (mg/L)	Annual Sample Result (mg/L)
Aluminum, Total	0.75		Magnesium, Total	0.0636	
Ammonia	4.0		Mercury, Total	0.0024	
Arsenic, Total	0.1685		Nickel, Total	0.875	
BOD, 5-Day	30		Nitrate + Nitrite Nitrogen	0.68	
Cadmium, Total	0.0159		Oil and Grease	15	
COD	120		pH	5.0-9.0	
Copper, Total	0.018		Phosphorus, Total (as P)	2.0	
Cyanide, Total	0.064		Selenium, Total	0.2385	
Fluoride	1.8		Silver, Total	0.032	
Iron, Total	5.0		Total Suspended Solids	150	
Lead, Total	0.15		Zinc, Total	0.395	



**DEPARTMENT OF ENVIRONMENT AND CONSERVATION**

**DIVISION OF WATER RESOURCES**

William R. Snodgrass - Tennessee Tower  
312 Rosa L. Parks Avenue, 11th Floor  
Nashville, Tennessee 37243-1102  
(615) 532-0625

**ANNUAL STORMWATER MONITORING REPORT**

for Stormwater Discharges Associated with Industrial Activity under the  
**TENNESSEE MULTI-SECTOR GENERAL PERMIT (TMSP)**

**CERTIFICATION AND SIGNATURE**

(Make all entries in ink, not with a pencil. This report must be signed by a responsible corporate officer for a corporation, a general partner for a partnership, the proprietor for a sole proprietorship, or a principal executive officer or ranking elected official for a public agency.)

I certify under penalty of law that this document and all of its attachments were prepared under my direction or my supervision in accordance with a system designed to assure qualified personnel properly gathered and evaluated the information submitted. Based on my inquiry of the person or persons who manage the system, or those persons directly responsible for gathering the information, the information submitted is, to the best of my knowledge and belief, true, accurate, and complete. I am aware there are significant penalties for submitting false information, including the possibility of fine and imprisonment for knowing violations. As specified in Tennessee Code Annotated Section 39-16-702(a)(4), this declaration is made under penalty of perjury.

\_\_\_\_\_  
Printed Name

\_\_\_\_\_  
Official Title

\_\_\_\_\_  
Signature

\_\_\_\_\_  
Date

**Tennessee Multi-Sector General Permit (TMSP)  
Annual Stormwater Monitoring Report – Instructions**

1. The purpose of this form is to report stormwater (SW) monitoring results under the TMSP. **Only 1 sample per calendar year is required** (except Sectors J and H). **For each outfall, one Annual Stormwater Monitoring Report form must be submitted.** Grab samples should be collected within the first 30 minutes (or as soon thereafter as practical, but not to exceed one hour) of when the runoff or snowmelt begins discharging. A separate form must be submitted for each outfall. If more than 1 sample is collected at any outfall, submit the average results of all monitoring data (for calculating average, use ½ of a detection level, if parameter was not detected). New facilities must conduct sampling in the year during which permit coverage was obtained and during each following year. The form(s) shall be submitted 30 days after the sampling results are obtained, but no later than the March 31st of the following calendar year.
2. If the results of annual SW runoff monitoring demonstrates that the facility has exceeded the cut-off concentration(s), the permittee must inform the division’s local Environmental Field Office (EFO) in writing within 30 days from the time SW monitoring results were received, describing the likely cause of the exceedance(s). Furthermore, within 60 days from the time SW monitoring results were received, the facility must review its stormwater pollution prevention plan (SWPPP), make any modifications or additions to the plan which would assist in reducing runoff concentrations to less than the monitoring cut-off concentrations for that parameter, and submit to the local EFO a summary of the proposed SWPPP modifications (including a timetable for implementation).
3. Low Concentration Waiver – When the average concentration for a pollutant calculated from monitoring data collected from the first 4 calendar years of monitoring is less than the cut-off concentration, a facility may waive monitoring requirements in the last annual monitoring period. This form should be used for certification of low concentration waiver provision.

Complete, sign and date this form before it is submitted. Keep a copy of the completed form for your records. Submit the original completed and signed form to the appropriate Environmental Field Office using the addresses below. You can also send a scanned copy to [Water.Permits@tn.gov](mailto:Water.Permits@tn.gov)

EFO	Street Address	City	Zip	Telephone
Chattanooga	1301 Riverfront Parkway, Suite #206	Chattanooga	37402	(423) 634-5745
Columbia	1421 Hampshire Pike	Columbia	38401	(931) 380-3371
Cookeville	1221 South Willow Ave.	Cookeville	38506	(931) 432-4015
Jackson	1625 Hollywood Drive	Jackson	38305	(731) 512-1300
Johnson City	2305 Silverdale Road	Johnson City	37601	(423) 854-5400
Knoxville	3711 Middlebrook Pike	Knoxville	37921	(865) 594-6035
Memphis	8383 Wolf Lake Drive	Bartlett	38133	(901) 371-3000
Nashville	711 RS Gass Boulevard	Nashville	37216	(615) 687-7000

Mining and quarrying facilities only (Sectors J and H) should submit one signed copy of Annual Stormwater Monitoring Report to the division’s Mining Section at the following address:

**Tennessee Division of Water Resources  
Mining Section  
3711 Middlebrook Pike  
Knoxville, TN 37921**



<p>Environmental Science Corp. Judy Morgan 12065 Lebanon Rd MOUNT JULIET, TN 37122-2605 615-758-5858</p> <p>Lab ID#: 02006      Cert. Exp. Date: 6/16/2016 Micro Exp. Dte: 10/12/2015</p>	<p>Disinfection Byproducts Enzyme Substrate - Total Coliform and E.coli. General Chemistry-Turbidity, Corrosivity, pH Heterotrophic Plate Count Inorganics-Trace Metals, Sodium, Nitrite, Nitrate, Fluoride, Sulfate, Cyanide, Asbestos, Chlorite, and Bromate Membrane Filter- Total, Fecal and E.coli. Organics</p>
<p>Environmental Testing and Consulting, Inc. Richard Medina 2790 Whitten Road Memphis, TN 38133 901-213-2400</p> <p>Lab ID#: 02027      Cert. Exp. Date: 5/10/2014</p>	<p>Disinfection Byproducts General Chemistry-Turbidity, Corrosivity, pH Heterotrophic Plate Count Inorganics-Trace Metals, Sodium, Nitrite, Nitrate, Fluoride, Sulfate, Cyanide, Asbestos, Chlorite, and Bromate Membrane Filter- Total, Fecal and E.coli. Organics</p>
<p>Industrial Microbiological Labs., Inc. Linda Buker 451 First Street NW Cleveland, TN 37311 423-476-7717</p> <p>Lab ID#: 03061      Cert. Exp. Date: 5/25/2014</p>	<p>Enzyme Substrate - Total Coliform and E.coli. Heterotrophic Plate Count Membrane Filter- Total, Fecal and E.coli.</p>
<p>Microbac Laboratories, Inc. - TN Troy Taubert 505 East Broadway Ave. Maryville, TN 37804 865-977-1200</p> <p>Lab ID#: 02017      Cert. Exp. Date: 4/30/2014</p>	<p>Disinfection Byproducts Enzyme Substrate - Total Coliform and E.coli. General Chemistry-Turbidity, Corrosivity, pH Inorganics-Trace Metals, Sodium, Nitrite, Nitrate, Fluoride, Sulfate, Cyanide, Asbestos, Chlorite, and Bromate Organics</p>
<p>Premium Waters Brad Hatton 1614 Industrial Rd. Greenville, tn 37745 423-787-0457</p> <p>Lab ID#: 03118      Cert. Exp. Date: 2/21/2016</p>	<p>Enzyme Substrate - Total Coliform and E.coli. Heterotrophic Plate Count</p>
<p>TEC Environmental Laboratories, Inc. Billie Haynes 2269 Dr. F.E. Wright Dr. Jackson, TN 38305 731-423-5330</p> <p>Lab ID#: 02046      Cert. Exp. Date: 2/23/2015</p>	<p>Disinfection Byproducts Enzyme Substrate - Total Coliform and E.coli. Inorganics-Trace Metals, Sodium, Nitrite, Nitrate, Fluoride, Sulfate, Cyanide, Asbestos, Chlorite, and Bromate Organics</p>

\* A laboratory may not be approved for all parameters within a Group, please contact Laboratory for specifics.

<p>Teledyne Brown Engineering, Inc. Lynne Perry 2508 Quality Lane Knoxville, TN 37931-3133 865-690-6819</p> <p>Lab ID#: 02047</p>	<p>Cert. Exp. Date: 9/3/2016</p>	<p>Radiochemistry</p>
---	----------------------------------	-----------------------

<p>Tenn. Tech. Univ. Center for Mgmt Daniel Dodson Prot Box 5033 Cookeville, TN 38505 931-372-3061</p> <p>Lab ID#: 02029</p>	<p>Cert. Exp. Date: 2/25/2015</p>	<p>Disinfection Byproducts Enzyme Substrate - Total Coliform and E.coli. General Chemistry-Turbidity, Corrosivity, pH Inorganics-Trace Metals, Sodium, Nitrite, Nitrate, Fluoride, Sulfate, Cyanide, Asbestos, Chlorite, and Bromate</p>
--	-----------------------------------	--

<p>TestAmerica Knoxville Mo Khounlavong 5815 Middlebrook Pike Knoxville, TN 37921 865-291-3000</p> <p>Lab ID#: 02014</p>	<p>Cert. Exp. Date: 4/13/2014</p>	<p>Inorganics-Trace Metals, Sodium, Nitrite, Nitrate, Fluoride, Sulfate, Cyanide, Asbestos, Chlorite, and Bromate Organics</p>
--	-----------------------------------	--

<p>TestAmerica Nashville Eric Smith 2960 Foster Creighton Drive Nashville, TN 37204-0566 615-301-5759</p> <p>Lab ID#: 02008</p>	<p>Cert. Exp. Date: 2/23/2017</p>	<p>Disinfection Byproducts General Chemistry-Turbidity, Corrosivity, pH Inorganics-Trace Metals, Sodium, Nitrite, Nitrate, Fluoride, Sulfate, Cyanide, Asbestos, Chlorite, and Bromate Organics</p>
---	-----------------------------------	---

**Out of State Laboratories**

<u>Laboratory</u>	<u>* Approved Contaminant Groups</u>
<p>ALS Environmental - Fort Collins Liz Stroh 225 Commerce Drive Fort Collins, CO 80524 970-490-1511</p> <p>Lab ID#: 02976</p>	<p>Cert. Exp. Date: 11/30/2014</p> <p>Disinfection Byproducts General Chemistry-Turbidity, Corrosivity, pH Inorganics-Trace Metals, Sodium, Nitrite, Nitrate, Fluoride, Sulfate, Cyanide, Asbestos, Chlorite, and Bromate Organics Radiochemistry</p>

\* A laboratory may not be approved for all parameters within a Group, please contact Laboratory for specifics.

<p>ALS Environmental Houston HRMS Laborator Rebecca Pierrot 19408 Park Row, Suite 320 Houston, TX 77084 713-266-1599</p> <p>Lab ID#: 04016</p> <p>Cert. Exp. Date: 6/30/2014</p>	<p>Organics</p>
<p>ALS Laboratory Group, Env. Div., (Cincinnati) Tracey Earle 4388 Glendale - Milford Road Cincinnati, OH 45242-3706 513-733-5336</p> <p>Lab ID#: 02987</p> <p>Cert. Exp. Date: 4/1/2014</p>	<p>Inorganics-Trace Metals, Sodium, Nitrite, Nitrate, Fluoride, Sulfate, Cyanide, Asbestos, Chlorite, and Bromate</p>
<p>American Water Central Laboratory (Bellevill Cindy Nettrour 1115 South Illinois Street Belleville, IL 62220 618-239-0516</p> <p>Lab ID#: 02933</p> <p>Cert. Exp. Date: 10/31/2014</p>	<p>Disinfection Byproducts General Chemistry-Turbidity, Corrosivity, pH Inorganics-Trace Metals, Sodium, Nitrite, Nitrate, Fluoride, Sulfate, Cyanide, Asbestos, Chlorite, and Bromate Organics Polychlorinated Biphenyls (PCB)</p>
<p>CH2M Hill Fort Cambell Water Plant Daniel Lancaster PO Box 595 Fort Campbell, KY 42223 931-431-5677</p> <p>Lab ID#: 03017</p> <p>Cert. Exp. Date: 3/24/2014</p>	<p>Enzyme Substrate - Total Coliform and E.coli. General Chemistry-Turbidity, Corrosivity, pH Inorganics-Trace Metals, Sodium, Nitrite, Nitrate, Fluoride, Sulfate, Cyanide, Asbestos, Chlorite, and Bromate</p>
<p>EMSL Analytical, Inc. - NJ Stephen Siegel 200 Route 130 North Cinnaminson, NJ 08077 8002203675</p> <p>Lab ID#: 02856</p> <p>Cert. Exp. Date: 6/30/2014</p>	<p>Inorganics-Trace Metals, Sodium, Nitrite, Nitrate, Fluoride, Sulfate, Cyanide, Asbestos, Chlorite, and Bromate</p>

\* A laboratory may not be approved for all parameters within a Group, please contact Laboratory for specifics.

<p>Eurofins Eaton Analytical, Inc. Alma Capati 750 Royal Oaks Drive, Suite 100 Monrovia, CA 91016-3629 626-386-1170</p> <p>Lab ID#: 02839      Cert. Exp. Date: 1/31/2015</p>	<p>Disinfection Byproducts Enzyme Substrate - Total Coliform and E.coli. General Chemistry-Turbidity, Corrosivity, pH Heterotrophic Plate Count Inorganics-Trace Metals, Sodium, Nitrite, Nitrate, Fluoride, Sulfate, Cyanide, Asbestos, Chlorite, and Bromate Membrane Filter- Total, Fecal and E.coli. Organics Polychlorinated Biphenyls (PCB) Radiochemistry</p>
<p>Eurofins Lancaster Laboratories Env., LLC Barbara Reedy 2425 New Holland Pike Lancaster, PA 17601 717-656-2300</p> <p>Lab ID#: 02838      Cert. Exp. Date: 1/31/2015</p>	<p>Disinfection Byproducts General Chemistry-Turbidity, Corrosivity, pH Inorganics-Trace Metals, Sodium, Nitrite, Nitrate, Fluoride, Sulfate, Cyanide, Asbestos, Chlorite, and Bromate Organics Polychlorinated Biphenyls (PCB)</p>
<p>Florida Radiochemistry Services, Inc. Michael Naumann 5456 Hoffner Ave., Suite 201 Orlando, FL 32812 407-382-7733</p> <p>Lab ID#: 02928      Cert. Exp. Date: 6/30/2014</p>	<p>Radiochemistry</p>
<p>GEL Laboratories, LLC Nancy Mattern PO Box 30712 Charleston, SC 29417 843-556-8171</p> <p>Lab ID#: 02934      Cert. Exp. Date: 10/31/2014</p>	<p>Disinfection Byproducts General Chemistry-Turbidity, Corrosivity, pH Inorganics-Trace Metals, Sodium, Nitrite, Nitrate, Fluoride, Sulfate, Cyanide, Asbestos, Chlorite, and Bromate Organics Radiochemistry</p>
<p>Hoffman Analytical Services (Alloway) Marcy Bolek 1776 Marion Waldo Rd Marion, OH 43301-0436 614-382-5991</p> <p>Lab ID#: 02920      Cert. Exp. Date: 4/24/2015</p>	<p>Disinfection Byproducts General Chemistry-Turbidity, Corrosivity, pH Inorganics-Trace Metals, Sodium, Nitrite, Nitrate, Fluoride, Sulfate, Cyanide, Asbestos, Chlorite, and Bromate Organics Polychlorinated Biphenyls (PCB)</p>

\* A laboratory may not be approved for all parameters within a Group, please contact Laboratory for specifics.

<p>McCall &amp; Spero Env., Inc. S. Dewayne Lear, TEM Lab Director 1831 Williamson Ct., Ste. 100 Louisville, KY 40223 800-841-0180</p> <p>Cert. Exp. Date: 12/31/2014</p> <p>Lab ID#: 02861</p>	<p>Inorganics-Trace Metals, Sodium, Nitrite, Nitrate, Fluoride, Sulfate, Cyanide, Asbestos, Chlorite, and Bromate</p>
<p>McCoy &amp; McCoy Chemical Laboratories Mark Demoss PO Box 907 Madisonville, KY 42431 270-821-7375</p> <p>Cert. Exp. Date: 12/31/2014</p> <p>Lab ID#: 02819</p>	<p>Disinfection Byproducts Enzyme Substrate - Total Coliform and E.coli. General Chemistry-Turbidity, Corrosivity, pH Inorganics-Trace Metals, Sodium, Nitrite, Nitrate, Fluoride, Sulfate, Cyanide, Asbestos, Chlorite, and Bromate Organics</p>
<p>Microbac Laboratories, Inc. - Central PA Samantha Saultz 4359 Linglestown Rd. Harrisburg, PA 17112 717-763-0582</p> <p>Cert. Exp. Date: 6/30/2014</p> <p>Lab ID#: 02865</p>	<p>Disinfection Byproducts General Chemistry-Turbidity, Corrosivity, pH Inorganics-Trace Metals, Sodium, Nitrite, Nitrate, Fluoride, Sulfate, Cyanide, Asbestos, Chlorite, and Bromate Organics Polychlorinated Biphenyls (PCB)</p>
<p>National Testing Laboratories, Ltd. Christine MacMillan 556 S. Mansfield Street Ypsilanti, MI 48197 734-483-8333</p> <p>Cert. Exp. Date: 12/31/2014</p> <p>Lab ID#: 02960</p>	<p>Disinfection Byproducts Enzyme Substrate - Total Coliform and E.coli. General Chemistry-Turbidity, Corrosivity, pH Heterotrophic Plate Count Inorganics-Trace Metals, Sodium, Nitrite, Nitrate, Fluoride, Sulfate, Cyanide, Asbestos, Chlorite, and Bromate Membrane Filter- Total, Fecal and E.coli. Organics Polychlorinated Biphenyls (PCB)</p>
<p>Pace Analytical Services, Inc. - FL Tina Buttermore 8 East Tower Circle Ormond Beach, FL 32174 386-672-5668</p> <p>Cert. Exp. Date: 6/30/2014</p> <p>Lab ID#: 02974</p>	<p>Disinfection Byproducts General Chemistry-Turbidity, Corrosivity, pH Inorganics-Trace Metals, Sodium, Nitrite, Nitrate, Fluoride, Sulfate, Cyanide, Asbestos, Chlorite, and Bromate Organics Polychlorinated Biphenyls (PCB)</p>
<p>Pace Analytical Services, Inc. - MN Cynthia Kunakom 1700 South East Elm Street Minneapolis, MN 55414 612-607-1700</p> <p>Cert. Exp. Date: 12/31/2014</p> <p>Lab ID#: 02818</p>	<p>Organics</p>

\* A laboratory may not be approved for all parameters within a Group, please contact Laboratory for specifics.

Pace Analytical Services, Inc. - PA Adrinna Washington 1638 Roseytown Road, Suites 2,3,4 Greensburg, PA 15601 724-850-5630  Lab ID#: 02867	Cert. Exp. Date: 3/31/2014	Radiochemistry
--	----------------------------	----------------

REIC Laboratory (R.E.I. Consultants, Inc.) Brenda Barnett PO Box 286 Beaver, WV 25813 304-255-2500  Lab ID#: 02926	Cert. Exp. Date: 12/31/2014	Disinfection Byproducts Enzyme Substrate - Total Coliform and E.coli. General Chemistry-Turbidity, Corrosivity, pH Heterotrophic Plate Count Inorganics-Trace Metals, Sodium, Nitrite, Nitrate, Fluoride, Sulfate, Cyanide, Asbestos, Chlorite, and Bromate Membrane Filter- Total, Fecal and E.coli. Organics
--	-----------------------------	---

Summit Env. Technologies, Inc. Ron Gibas 3310 Win Street Cuyahoga Falls, OH 44223 330.253.8211  Lab ID#: 04018	Cert. Exp. Date: 6/30/2014	Disinfection Byproducts General Chemistry-Turbidity, Corrosivity, pH Inorganics-Trace Metals, Sodium, Nitrite, Nitrate, Fluoride, Sulfate, Cyanide, Asbestos, Chlorite, and Bromate Organics Polychlorinated Biphenyls (PCB)
--	----------------------------	---

TestAmerica Buffalo David Orłowski 10 Hazelwood Drive - Suite 106 Amherst, NY 14228 716-691-2600  Lab ID#: 02970	Cert. Exp. Date: 3/31/2014	Disinfection Byproducts General Chemistry-Turbidity, Corrosivity, pH Inorganics-Trace Metals, Sodium, Nitrite, Nitrate, Fluoride, Sulfate, Cyanide, Asbestos, Chlorite, and Bromate Organics
--	----------------------------	--

TestAmerica Pensacola Maria Bundy 3355 McLemore Drive Pensacola, FL 32514 850-474-1001  Lab ID#: 02907	Cert. Exp. Date: 6/30/2014	General Chemistry-Turbidity, Corrosivity, pH Inorganics-Trace Metals, Sodium, Nitrite, Nitrate, Fluoride, Sulfate, Cyanide, Asbestos, Chlorite, and Bromate Organics
--	----------------------------	---

TestAmerica Richland Sarah Nagel 2800 George Washington Way Richland, WA 99354 509-375-5590  Lab ID#: 04011	Cert. Exp. Date: 8/13/2014	Inorganics-Trace Metals, Sodium, Nitrite, Nitrate, Fluoride, Sulfate, Cyanide, Asbestos, Chlorite, and Bromate Radiochemistry
---	----------------------------	---

\* A laboratory may not be approved for all parameters within a Group, please contact Laboratory for specifics.

---

TestAmerica Savannah  
Whitney Palefsky  
5102 LaRoche Avenue  
Savannah, GA 31404  
912-354-7858

Cert. Exp. Date: 6/30/2014

Lab ID#: 02961

Disinfection Byproducts  
General Chemistry-Turbidity, Corrosivity, pH  
Inorganics-Trace Metals, Sodium, Nitrite, Nitrate, Fluoride,  
Sulfate, Cyanide, Asbestos, Chlorite, and Bromate  
Organics  
Polychlorinated Biphenyls (PCB)

---

Underwriters Laboratories LLC  
Dale Piechocki  
110 South Hill Street  
South Bend, IN 46617-2702  
800 332 4345

Cert. Exp. Date: 6/30/2014

Lab ID#: 02973

Disinfection Byproducts  
Enzyme Substrate - Total Coliform and E.coli.  
General Chemistry-Turbidity, Corrosivity, pH  
Heterotrophic Plate Count  
Inorganics-Trace Metals, Sodium, Nitrite, Nitrate, Fluoride,  
Sulfate, Cyanide, Asbestos, Chlorite, and Bromate  
Organics  
Polychlorinated Biphenyls (PCB)  
Radiochemistry

---

Vista Analytical Laboratory, Inc.  
Rose Harrelson  
1104 Windfield Way  
El Dorado Hills, CA 95762  
916-933-1640

Cert. Exp. Date: 1/31/2015

Lab ID#: 02996

Organics

\* A laboratory may not be approved for all parameters within a Group, please contact Laboratory for specifics.

1/7/2014

State of Tennessee

Commercial Laboratories Approved for Drinking Water Analyses

Section 1200-5-.14 of the Regulations states that for the purpose of determining compliance with the regulations regarding maximum contaminant levels, samples may be considered only if they have been analyzed by a laboratory certified by the Department.

The Department has given approval for the following laboratories to provide the analyses of certain contaminants as designated. Please pay close attention to the laboratory certification expiration dates. Analyses WILL NOT BE ACCEPTED from those laboratories whose certifications have expired!

Any questions concerning this list should be directed to the laboratory certification program at (615) 532-0191.

In State Laboratories

Laboratory	* Approved Contaminant Groups
<p>AIRL, Inc. Roy Patterson 1550 37th Street NE Cleveland, TN 37312-5600 423-476-7766</p> <p>Cert. Exp. Date: 7/18/2014</p> <p>Lab ID#: 02034</p>	<p>Disinfection Byproducts General Chemistry-Turbidity, Corrosivity, pH Heterotrophic Plate Count Inorganics-Trace Metals, Sodium, Nitrite, Nitrate, Fluoride, Sulfate, Cyanide, Asbestos, Chlorite, and Bromate Membrane Filter- Total, Fecal and E.coli.</p>
<p>BCN Laboratory Emilia Rico PO Box 50305 Knoxville, TN 37950 800-236-0505</p> <p>Cert. Exp. Date: 2/13/2015</p> <p>Lab ID#: 03070</p>	<p>Enzyme Substrate - Total Coliform and E.coli.</p>
<p>Eberline Services Saba Arnold 601 Scarboro Road Oak Ridge, TN 37830-7371 865-481-0683</p> <p>Cert. Exp. Date: 12/16/2014</p> <p>Lab ID#: 02042</p>	<p>Radiochemistry</p>
<p>Environmental Developmental Lab James Larrance 1343 Mine Road New Market, TN 37820 865-475-4532</p> <p>Cert. Exp. Date: 10/28/2014</p> <p>Lab ID#: 02002</p>	<p>Disinfection Byproducts</p>

\* A laboratory may not be approved for all parameters within a Group, please contact Laboratory for specifics.



<p>Environmental Science Corp. Judy Morgan 12065 Lebanon Rd MOUNT JULIET, TN 37122-2605 615-758-5858</p> <p>Lab ID#: 02006      Cert. Exp. Date: 6/16/2016 Micro Exp. Dte: 10/12/2015</p>	<p>Disinfection Byproducts Enzyme Substrate - Total Coliform and E.coli. General Chemistry-Turbidity, Corrosivity, pH Heterotrophic Plate Count Inorganics-Trace Metals, Sodium, Nitrite, Nitrate, Fluoride, Sulfate, Cyanide, Asbestos, Chlorite, and Bromate Membrane Filter- Total, Fecal and E.coli. Organics</p>
<p>Environmental Testing and Consulting, Inc. Richard Medina 2790 Whitten Road Memphis, TN 38133 901-213-2400</p> <p>Lab ID#: 02027      Cert. Exp. Date: 5/10/2014</p>	<p>Disinfection Byproducts General Chemistry-Turbidity, Corrosivity, pH Heterotrophic Plate Count Inorganics-Trace Metals, Sodium, Nitrite, Nitrate, Fluoride, Sulfate, Cyanide, Asbestos, Chlorite, and Bromate Membrane Filter- Total, Fecal and E.coli. Organics</p>
<p>Industrial Microbiological Labs., Inc. Linda Buker 451 First Street NW Cleveland, TN 37311 423-476-7717</p> <p>Lab ID#: 03061      Cert. Exp. Date: 5/25/2014</p>	<p>Enzyme Substrate - Total Coliform and E.coli. Heterotrophic Plate Count Membrane Filter- Total, Fecal and E.coli.</p>
<p>Microbac Laboratories, Inc. - TN Troy Taubert 505 East Broadway Ave. Maryville, TN 37804 865-977-1200</p> <p>Lab ID#: 02017      Cert. Exp. Date: 4/30/2014</p>	<p>Disinfection Byproducts Enzyme Substrate - Total Coliform and E.coli. General Chemistry-Turbidity, Corrosivity, pH Inorganics-Trace Metals, Sodium, Nitrite, Nitrate, Fluoride, Sulfate, Cyanide, Asbestos, Chlorite, and Bromate Organics</p>
<p>Premium Waters Brad Hatton 1614 Industrial Rd. Greenville, tn 37745 423-787-0457</p> <p>Lab ID#: 03118      Cert. Exp. Date: 2/21/2016</p>	<p>Enzyme Substrate - Total Coliform and E.coli. Heterotrophic Plate Count</p>
<p>TEC Environmental Laboratories, Inc. Billie Haynes 2269 Dr. F.E. Wright Dr. Jackson, TN 38305 731-423-5330</p> <p>Lab ID#: 02046      Cert. Exp. Date: 2/23/2015</p>	<p>Disinfection Byproducts Enzyme Substrate - Total Coliform and E.coli. Inorganics-Trace Metals, Sodium, Nitrite, Nitrate, Fluoride, Sulfate, Cyanide, Asbestos, Chlorite, and Bromate Organics</p>

\* A laboratory may not be approved for all parameters within a Group, please contact Laboratory for specifics.

<p>Teledyne Brown Engineering, Inc. Lynne Perry 2508 Quality Lane Knoxville, TN 37931-3133 865-690-6819</p> <p>Lab ID#: 02047</p> <p>Cert. Exp. Date: 9/3/2016</p>	<p>Radiochemistry</p>
--	-----------------------

<p>Tenn. Tech. Univ. Center for Mgmt Daniel Dodson Prot Box 5033 Cookeville, TN 38505 931-372-3061</p> <p>Lab ID#: 02029</p> <p>Cert. Exp. Date: 2/25/2015</p>	<p>Disinfection Byproducts Enzyme Substrate - Total Coliform and E.coli. General Chemistry-Turbidity, Corrosivity, pH Inorganics-Trace Metals, Sodium, Nitrite, Nitrate, Fluoride, Sulfate, Cyanide, Asbestos, Chlorite, and Bromate</p>
--	--

<p>TestAmerica Knoxville Mo Khounlavong 5815 Middlebrook Pike Knoxville, TN 37921 865-291-3000</p> <p>Lab ID#: 02014</p> <p>Cert. Exp. Date: 4/13/2014</p>	<p>Inorganics-Trace Metals, Sodium, Nitrite, Nitrate, Fluoride, Sulfate, Cyanide, Asbestos, Chlorite, and Bromate Organics</p>
--	--

<p>TestAmerica Nashville Eric Smith 2960 Foster Creighton Drive Nashville, TN 37204-0566 615-301-5759</p> <p>Lab ID#: 02008</p> <p>Cert. Exp. Date: 2/23/2017</p>	<p>Disinfection Byproducts General Chemistry-Turbidity, Corrosivity, pH Inorganics-Trace Metals, Sodium, Nitrite, Nitrate, Fluoride, Sulfate, Cyanide, Asbestos, Chlorite, and Bromate Organics</p>
---	---

**Out of State Laboratories**

<u>Laboratory</u>	<u>* Approved Contaminant Groups</u>
<p>ALS Environmental - Fort Collins Liz Stroh 225 Commerce Drive Fort Collins, CO 80524 970-490-1511</p> <p>Lab ID#: 02976</p> <p>Cert. Exp. Date: 11/30/2014</p>	<p>Disinfection Byproducts General Chemistry-Turbidity, Corrosivity, pH Inorganics-Trace Metals, Sodium, Nitrite, Nitrate, Fluoride, Sulfate, Cyanide, Asbestos, Chlorite, and Bromate Organics Radiochemistry</p>

\* A laboratory may not be approved for all parameters within a Group, please contact Laboratory for specifics.

<p>ALS Environmental Houston HRMS Laborator Rebecca Pierrot 19408 Park Row, Suite 320 Houston, TX 77084 713-266-1599</p> <p>Lab ID#: 04016</p> <p>Cert. Exp. Date: 6/30/2014</p>	<p>Organics</p>
<p>ALS Laboratory Group, Env. Div., (Cincinnati) Tracey Earle 4388 Glendale - Milford Road Cincinnati, OH 45242-3706 513-733-5336</p> <p>Lab ID#: 02987</p> <p>Cert. Exp. Date: 4/1/2014</p>	<p>Inorganics-Trace Metals, Sodium, Nitrite, Nitrate, Fluoride, Sulfate, Cyanide, Asbestos, Chlorite, and Bromate</p>
<p>American Water Central Laboratory (Bellevill) Cindy Nettrour 1115 South Illinois Street Belleville, IL 62220 618-239-0516</p> <p>Lab ID#: 02933</p> <p>Cert. Exp. Date: 10/31/2014</p>	<p>Disinfection Byproducts General Chemistry-Turbidity, Corrosivity, pH Inorganics-Trace Metals, Sodium, Nitrite, Nitrate, Fluoride, Sulfate, Cyanide, Asbestos, Chlorite, and Bromate Organics Polychlorinated Biphenyls (PCB)</p>
<p>CH2M Hill Fort Cambell Water Plant Daniel Lancaster PO Box 595 Fort Campbell, KY 42223 931-431-5677</p> <p>Lab ID#: 03017</p> <p>Cert. Exp. Date: 3/24/2014</p>	<p>Enzyme Substrate - Total Coliform and E.coli. General Chemistry-Turbidity, Corrosivity, pH Inorganics-Trace Metals, Sodium, Nitrite, Nitrate, Fluoride, Sulfate, Cyanide, Asbestos, Chlorite, and Bromate</p>
<p>EMSL Analytical, Inc. - NJ Stephen Siegel 200 Route 130 North Cinnaminson, NJ 08077 8002203675</p> <p>Lab ID#: 02856</p> <p>Cert. Exp. Date: 6/30/2014</p>	<p>Inorganics-Trace Metals, Sodium, Nitrite, Nitrate, Fluoride, Sulfate, Cyanide, Asbestos, Chlorite, and Bromate</p>

\* A laboratory may not be approved for all parameters within a Group, please contact Laboratory for specifics.

<p>Eurofins Eaton Analytical, Inc. Alma Capati 750 Royal Oaks Drive, Suite 100 Monrovia, CA 91016-3629 626-386-1170</p> <p>Lab ID#: 02839      Cert. Exp. Date: 1/31/2015</p>	<p>Disinfection Byproducts Enzyme Substrate - Total Coliform and E.coli. General Chemistry-Turbidity, Corrosivity, pH Heterotrophic Plate Count Inorganics-Trace Metals, Sodium, Nitrite, Nitrate, Fluoride, Sulfate, Cyanide, Asbestos, Chlorite, and Bromate Membrane Filter- Total, Fecal and E.coli. Organics Polychlorinated Biphenyls (PCB) Radiochemistry</p>
<p>Eurofins Lancaster Laboratories Env., LLC Barbara Reedy 2425 New Holland Pike Lancaster, PA 17601 717-656-2300</p> <p>Lab ID#: 02838      Cert. Exp. Date: 1/31/2015</p>	<p>Disinfection Byproducts General Chemistry-Turbidity, Corrosivity, pH Inorganics-Trace Metals, Sodium, Nitrite, Nitrate, Fluoride, Sulfate, Cyanide, Asbestos, Chlorite, and Bromate Organics Polychlorinated Biphenyls (PCB)</p>
<p>Florida Radiochemistry Services, Inc. Michael Naumann 5456 Hoffner Ave., Suite 201 Orlando, FL 32812 407-382-7733</p> <p>Lab ID#: 02928      Cert. Exp. Date: 6/30/2014</p>	<p>Radiochemistry</p>
<p>GEL Laboratories, LLC Nancy Mattern PO Box 30712 Charleston, SC 29417 843-556-8171</p> <p>Lab ID#: 02934      Cert. Exp. Date: 10/31/2014</p>	<p>Disinfection Byproducts General Chemistry-Turbidity, Corrosivity, pH Inorganics-Trace Metals, Sodium, Nitrite, Nitrate, Fluoride, Sulfate, Cyanide, Asbestos, Chlorite, and Bromate Organics Radiochemistry</p>
<p>Hoffman Analytical Services (Alloway) Marcy Bolek 1776 Marion Waldo Rd Marion, OH 43301-0436 614-382-5991</p> <p>Lab ID#: 02920      Cert. Exp. Date: 4/24/2015</p>	<p>Disinfection Byproducts General Chemistry-Turbidity, Corrosivity, pH Inorganics-Trace Metals, Sodium, Nitrite, Nitrate, Fluoride, Sulfate, Cyanide, Asbestos, Chlorite, and Bromate Organics Polychlorinated Biphenyls (PCB)</p>

\* A laboratory may not be approved for all parameters within a Group, please contact Laboratory for specifics.

<p>McCall &amp; Spero Env., Inc. S. Dewayne Lear, TEM Lab Director 1831 Williamson Ct., Ste. 100 Louisville, KY 40223 800-841-0180</p> <p>Lab ID#: 02861</p> <p>Cert. Exp. Date: 12/31/2014</p>	<p>Inorganics-Trace Metals, Sodium, Nitrite, Nitrate, Fluoride, Sulfate, Cyanide, Asbestos, Chlorite, and Bromate</p>
<p>McCoy &amp; McCoy Chemical Laboratories Mark Demoss PO Box 907 Madisonville, KY 42431 270-821-7375</p> <p>Lab ID#: 02819</p> <p>Cert. Exp. Date: 12/31/2014</p>	<p>Disinfection Byproducts Enzyme Substrate - Total Coliform and E.coli. General Chemistry-Turbidity, Corrosivity, pH Inorganics-Trace Metals, Sodium, Nitrite, Nitrate, Fluoride, Sulfate, Cyanide, Asbestos, Chlorite, and Bromate Organics</p>
<p>Microbac Laboratories, Inc. - Central PA Samantha Saultz 4359 Linglestown Rd. Harrisburg, PA 17112 717-763-0582</p> <p>Lab ID#: 02865</p> <p>Cert. Exp. Date: 6/30/2014</p>	<p>Disinfection Byproducts General Chemistry-Turbidity, Corrosivity, pH Inorganics-Trace Metals, Sodium, Nitrite, Nitrate, Fluoride, Sulfate, Cyanide, Asbestos, Chlorite, and Bromate Organics Polychlorinated Biphenyls (PCB)</p>
<p>National Testing Laboratories, Ltd. Christine MacMillan 556 S. Mansfield Street Ypsilanti, MI 48197 734-483-8333</p> <p>Lab ID#: 02960</p> <p>Cert. Exp. Date: 12/31/2014</p>	<p>Disinfection Byproducts Enzyme Substrate - Total Coliform and E.coli. General Chemistry-Turbidity, Corrosivity, pH Heterotrophic Plate Count Inorganics-Trace Metals, Sodium, Nitrite, Nitrate, Fluoride, Sulfate, Cyanide, Asbestos, Chlorite, and Bromate Membrane Filter- Total, Fecal and E.coli. Organics Polychlorinated Biphenyls (PCB)</p>
<p>Pace Analytical Services, Inc. - FL Tina Buttermore 8 East Tower Circle Ormond Beach, FL 32174 386-672-5668</p> <p>Lab ID#: 02974</p> <p>Cert. Exp. Date: 6/30/2014</p>	<p>Disinfection Byproducts General Chemistry-Turbidity, Corrosivity, pH Inorganics-Trace Metals, Sodium, Nitrite, Nitrate, Fluoride, Sulfate, Cyanide, Asbestos, Chlorite, and Bromate Organics Polychlorinated Biphenyls (PCB)</p>
<p>Pace Analytical Services, Inc. - MN Cynthia Kunakom 1700 South East Elm Street Minneapolis, MN 55414 612-607-1700</p> <p>Lab ID#: 02818</p> <p>Cert. Exp. Date: 12/31/2014</p>	<p>Organics</p>

\* A laboratory may not be approved for all parameters within a Group, please contact Laboratory for specifics.

Pace Analytical Services, Inc. - PA Adrinnia Washington 1638 Roseytown Road, Suites 2,3,4 Greensburg, PA 15601 724-850-5630  Lab ID#: 02867	Cert. Exp. Date: 3/31/2014	Radiochemistry
---	----------------------------	----------------

REIC Laboratory (R.E.I. Consultants, Inc.) Brenda Barnett PO Box 286 Beaver, WV 25813 304-255-2500  Lab ID#: 02926	Cert. Exp. Date: 12/31/2014	Disinfection Byproducts Enzyme Substrate - Total Coliform and E.coli. General Chemistry-Turbidity, Corrosivity, pH Heterotrophic Plate Count Inorganics-Trace Metals, Sodium, Nitrite, Nitrate, Fluoride, Sulfate, Cyanide, Asbestos, Chlorite, and Bromate Membrane Filter- Total, Fecal and E.coli. Organics
--	-----------------------------	---

Summit Env. Technologies, Inc. Ron Gibas 3310 Win Street Cuyahoga Falls, OH 44223 330.253.8211  Lab ID#: 04018	Cert. Exp. Date: 6/30/2014	Disinfection Byproducts General Chemistry-Turbidity, Corrosivity, pH Inorganics-Trace Metals, Sodium, Nitrite, Nitrate, Fluoride, Sulfate, Cyanide, Asbestos, Chlorite, and Bromate Organics Polychlorinated Biphenyls (PCB)
--	----------------------------	---

TestAmerica Buffalo David Orlowski 10 Hazelwood Drive - Suite 106 Amherst, NY 14228 716-691-2600  Lab ID#: 02970	Cert. Exp. Date: 3/31/2014	Disinfection Byproducts General Chemistry-Turbidity, Corrosivity, pH Inorganics-Trace Metals, Sodium, Nitrite, Nitrate, Fluoride, Sulfate, Cyanide, Asbestos, Chlorite, and Bromate Organics
--	----------------------------	--

TestAmerica Pensacola Maria Bundy 3355 McLemore Drive Pensacola, FL 32514 850-474-1001  Lab ID#: 02907	Cert. Exp. Date: 6/30/2014	General Chemistry-Turbidity, Corrosivity, pH Inorganics-Trace Metals, Sodium, Nitrite, Nitrate, Fluoride, Sulfate, Cyanide, Asbestos, Chlorite, and Bromate Organics
--	----------------------------	---

TestAmerica Richland Sarah Nagel 2800 George Washington Way Richland, WA 99354 509-375-5590  Lab ID#: 04011	Cert. Exp. Date: 8/13/2014	Inorganics-Trace Metals, Sodium, Nitrite, Nitrate, Fluoride, Sulfate, Cyanide, Asbestos, Chlorite, and Bromate Radiochemistry
---	----------------------------	---

\* A laboratory may not be approved for all parameters within a Group, please contact Laboratory for specifics.

---

TestAmerica Savannah  
Whitney Palefsky  
5102 LaRoche Avenue  
Savannah, GA 31404  
912-354-7858

Cert. Exp. Date: 6/30/2014

Lab ID#: 02961

Disinfection Byproducts  
General Chemistry-Turbidity, Corrosivity, pH  
Inorganics-Trace Metals, Sodium, Nitrite, Nitrate, Fluoride,  
Sulfate, Cyanide, Asbestos, Chlorite, and Bromate  
Organics  
Polychlorinated Biphenyls (PCB)

---

Underwriters Laboratories LLC  
Dale Piechocki  
110 South Hill Street  
South Bend, IN 46617-2702  
800 332 4345

Cert. Exp. Date: 6/30/2014

Lab ID#: 02973

Disinfection Byproducts  
Enzyme Substrate - Total Coliform and E.coli.  
General Chemistry-Turbidity, Corrosivity, pH  
Heterotrophic Plate Count  
Inorganics-Trace Metals, Sodium, Nitrite, Nitrate, Fluoride,  
Sulfate, Cyanide, Asbestos, Chlorite, and Bromate  
Organics  
Polychlorinated Biphenyls (PCB)  
Radiochemistry

---

Vista Analytical Laboratory, Inc.  
Rose Harrelson  
1104 Windfield Way  
El Dorado Hills, CA 95762  
916-933-1640

Cert. Exp. Date: 1/31/2015

Lab ID#: 02996

Organics

\* A laboratory may not be approved for all parameters within a Group, please contact Laboratory for specifics.