



STATE OF TENNESSEE
DEPARTMENT OF ENVIRONMENT AND CONSERVATION

Division of Solid Waste Management
Davy Crockett Tower-7th Floor
500 James Robertson Parkway
Nashville, Tennessee 37243

April 25, 2024

The Honorable Jefferey H. Griggs
Mayor, City of Lexington
P.O. Box 1699
Lexington, TN 38351

**Re: Permit-By-Rule Approval – Conversion of a Transfer Station Facility (TRF390001570)
to a Solid Waste Processing Facility, City of Lexington Transfer Station – SWP390001605**

Dear Mayor Griggs:

As required by Rule 0400-11-01-.02(6)(b)1 of the Solid Waste Processing and Disposal Regulations, the Tennessee Department of Environment and Conservation (TDEC), Division of Solid Waste Management (DSWM) has reviewed your amended notification to the Permit-By-Rule (PBR) for the City of Lexington Transfer Station (TRF390001570) received on November 28, 2023. The request consists of converting the existing City of Lexington Transfer Station into a PBR solid waste processing facility. This facility will serve as a transfer station that may also shred construction/demolition material and tires. No waste will be stored on site except for waste in roll-off containers or transfer trailers that are waiting to be delivered for disposal. This location is serving as the tire drop off location for Henderson County per T.C.A 68-211-866.

Therefore, this letter will serve as official notification from the Tennessee Department of Environment and Conservation (TDEC), Division of Solid Waste Management (DSWM) for two purposes: (1) termination of your PBR Transfer Station for the above-referenced facility (TRF390001570) and (2) issuance of your PBR for a Solid Waste Processing Facility located in Henderson County at 240 North Industrial Drive, Lexington, Tennessee 38351 (latitude 35.689255/ longitude -88.380237). DSWM is notifying you of the results of this review in accordance with Rule 0400-11-01-.02(6)(b)2(ii). DSWM approves the amended notification request to convert the existing transfer station into a solid waste processing facility. Though the facility will be permitted as a solid waste processing facility, the name of the facility will remain City of Lexington Transfer Station. The registration number for the PBR solid waste processing facility is now SWP390001605.

With the issuance of this permit, there is an annual maintenance fee required [pursuant to Tennessee Rule 0400-11-01-.07(3)] for this processing facility. The annual fee is \$3,000.00. You will receive an annual maintenance fee invoice in August 2024 from TDEC Division of Fiscal Services that will indicate City of Lexington owes \$3,000.00.

Per Rule 0400-11-01-.02(2)(b)1(i)(XVIII) solid waste processing facilities must file a financial instrument with the State of Tennessee in an amount sufficient to ensure the proper closure of the facility. Based on review of your PBR application, financial assurance is not required at this time. Please note that if any of the conditions as submitted with your notification change an updated notification must be submitted to the DSWM and financial assurance may be required.

If you have any questions, feel free to contact Brianna Rives by email at Brianna.Rives@tn.gov or call 615-308-0104.

Sincerely,

A handwritten signature in black ink, appearing to read "Lisa A. Hughey".

Lisa A. Hughey, CHMM
Director

cc: Christy Waugh, Assistance Director, City of Lexington Public Works
Rob Ashe, Deputy Director of Field Operations, DSWM
Clifton Jeter, Manager, Jackson Environmental Field Office, DSWM
Amy Katcher, Manager, Materials Management Program, DSWM
Records.SWM@tn.gov



STATE OF TENNESSEE
DEPARTMENT OF ENVIRONMENT AND CONSERVATION
DIVISION OF SOLID WASTE MANAGEMENT
WILLIAM R. SNODGRASS TENNESSEE TOWER
312 ROSA L. PARKS AVENUE, 14TH FLOOR
NASHVILLE, TN 37243

NOV 28 2023

SOLID WASTE PERMIT-BY-RULE NOTIFICATION

1. REVIEW FEE ENCLOSED?

☐ YES ☒ NO
☐ NEW PROCESSING FACILITY (\$1,000)
☐ NEW TRANSFER STATION (\$500)

2. TYPE OF PERMIT- BY- RULE REQUESTED

☐ COMPOST FACILITY ☐ LAND APPLICATION ☐ TIRE STORAGE FACILITY ☐ NEW FACILITY
☐ CONVENIENCE CENTER ☒ PROCESSING FACILITY ☐ TRANSFER STATION ☐ AMENDMENT TO EXISTING PERMIT

PROCESSING FACILITIES ONLY

IS THIS FACILITY SUBJECT TO "THE JACKSON LAW"? ☐ YES ☒ NO

3. FACILITY INFORMATION

FULL LEGAL NAME OF FACILITY
City Of Lexington Transfer Station
PHYSICAL LOCATION OR ADDRESS OF FACILITY CITY STATE ZIP
240 North Industrial Drive Lexington Tn 38351
FACILITY MAILING ADDRESS CITY STATE ZIP FACILITY EMAIL
P. O. Box 1699 Lexington, TN 38351
FACILITY MANAGER OR SITE OPERATOR PHONE (WITH AREA CODE) AFFILIATION OF SITE OPERATOR (IF DIFFERENT FROM PERMITTEE)
Kacy Kyle (731) 968-7091

4. APPLICANT (PERMITTEE)

APPLICANT NAME PHONE (WITH AREA CODE) EMAIL
City of Lexington (731) 968-6657
RESPONSIBLE OFFICIAL / TITLE PHONE (WITH AREA CODE) EMAIL
Jeffrey H. Griggs, Mayor (731) 968-6657
RESPONSIBLE OFFICIAL MAILING ADDRESS CITY STATE ZIP
P. O. Box 1699 Lexington, TN 38351
LANDOWNER NAME LANDOWNER MAILING ADDRESS CITY STATE ZIP
City of Lexington, TN PO Box 1699 Lexington, TN 38351

LANDOWNER SIGNATURE LANDOWNER SIGNATURE LANDOWNER SIGNATURE DATE
11-6-2023

5. WASTE HANDLING

DESCRIPTION OF ACTIVITIES AND WASTES HANDLED OR PROCESSED AMOUNT OF WASTE HANDLED, PROCESSED OR STORED
Transfer of all Class I material, single stream, glass and clean brush as well as the shredding and processing of const debris and tires
WEIGHT TONS / DAY VOLUME YARDS / DAY STORAGE MAX CU YARDS
44

6. CERTIFICATION REQUIRED

I certify under penalty of law that this document and all attachments were prepared by me, or under my direction or supervision. The submitted information is to the best of my knowledge and belief, true, accurate, and complete. I am aware that there are significant penalties for submitting false information, including the possibility of fine and imprisonment. As specified in Tennessee Code Annotated Section 39-16-702(a)(4), this declaration is made under penalty of perjury.

SIGNATURE OF RESPONSIBLE OFFICIAL
Jeffrey H. Griggs
PRINTED NAME
Mayor
TITLE
11/06/2023
DATE
SIGNATURE OF NOTARY
5/23/2027
DATE COMMISSION EXPIRES





Mobile shredder is stored inside the transfer station on pad and occasionally off to the side to assist with traffic flow when needed.

While shredding tires and C&D, the shredder is placed in the dotted lined area so the shredded material can be deposited on pad.

X
Approximate location of the leachate collection tank.

Permits by Rule Criteria: Solid Waste Processors

Please provide a narrative response to how the proposed Solid Waste Processing facility will comply with each of the below regulatory criteria:

Rule 0400-11-01-01-.02(2)(a)4.

New solid waste processing facilities, tire storage facilities, and transfer stations must not be located in wetlands, unless the owner or operator makes the applicable demonstrations to the Commissioner as referenced at subparagraph (2)(p) of Rule 0400-11-01-.04.

The Solid Waste Facility is not located in a wetland. See attached FEMA FIRM

Rule 0400-11-01-01-.02(2)(a)5

Solid waste processing facilities, tire storage facilities, and transfer stations must not be located in a 100-year floodplain unless it is demonstrated to the satisfaction of the Commissioner that:

- (i) Location in the floodplain will not restrict the flow of the 100-year flood nor reduce the temporary water storage capacity of the floodplain; and

The facility is not located in a flood plain.

- (ii) The facility is designed, constructed, operated, and maintained to prevent washout of any solid waste.

The facility is designed in such a way as there can be no washout of solid waste.

Rule 0400-11-01-01-.02(2)(a)6

Solid waste processing facilities, tire storage facilities, and transfer stations must not:

- (i) Cause or contribute to the taking of any endangered or threatened species of plants, fish, or wildlife; or
- (ii) Result in the destruction or adverse modification of the critical habitat of endangered or threatened species.

The facility does not contribute to the taking or endangering threatened plants, fishes, or wildlife.

Rule 0400-11-01-01-.02(2)(a)7&8

An owner or operator proposing a new solid waste processing facility or a transfer station that handles putrescible wastes located within 10,000 feet (3,048 meters) of any airport runway end used by turbojet aircraft or within 5,000 feet (1,524 meters) of any airport runway end used only by piston-type aircraft must demonstrate to the satisfaction of the Commissioner that the facility does not pose a bird hazard to aircraft.

An owner or operator proposing a new solid waste processing facility or a transfer station that handles putrescible wastes located within a five-mile radius of any airport runway end used by turbojet or piston-type aircraft must notify the affected airport and the appropriate Federal Aviation Administration (FAA) office.

The facility's closest airport is Beech River Regional Airport (PVE) and is approximately 16.6 miles by vehicle and 10.43 miles from point to point.

Rule 0400-11-01-01-.02(2)(b)

(i): The operator complies with the notification requirement of subparagraph (b) of this paragraph; Except as specified in subpart (iv) of this part, an owner or operator of a [solid waste processor] facility shall:

- (I) Construct, operate, maintain, and close the facility in such a manner as to minimize:
 - I. The propagation, harborage, or attraction of flies, rodents, or other disease vectors
 - II. The potential for explosions or uncontrolled fires;
 - III. The potential for releases of solid wastes or solid waste constituents to the environment except in a manner authorized by state and local air pollution control, water pollution control, and/or waste management agencies
 - IV. The potential for harm to the public through unauthorized or uncontrolled access;

The Facility will be operated in accordance with (IAW) TDEC Rules and will not promote vectors. There should be little to no potential for explosion due to the nature of the waste. Fire Control and suppression equipment will be on-site at all times during operation at the following locations: One 20 lb ABC extinguisher at the Scale House, and two 20 lb ABC extinguishers at the Transfer Station. If for some reason a load comes into the facility and labeled as "hot", it will be isolated on the south side of the facility near a fire plug. The Lexington Fire Department will be notified from the facility; No waste will be left outside of the container after operating hours. Personnel will be on-site to manage and contain waste during operating hours. The facility has lockable gates and is not accessible by the public during non-operating hours.

- (II) Ensure that the facility has an artificial or natural barrier which completely surrounds the facility and a means to control entry, at all times, through the gate or other entrances to the facility

The perimeter of the facility is surrounded by fencing.

- (III) Ensure that the facility, if open to the public, has clearly visible and legible signs at the points of public access which indicate the hours of operation, the general types of waste materials that either will or will not be accepted, emergency telephone numbers, schedule of charges (if applicable), and other necessary information:

The Facility has all appropriate signage in place as required by TDEC Division of Solid Waste Management

- (IV) Ensure that the facility has trained personnel present during operating hours;

The hours of operation are posted and trained personnel are onsite during all hours of operation.

- (V) Ensure that the facility has adequate sanitary facilities, potable water, emergency communications (e.g., telephone), and shelter available for personnel;

The facility has sanitary facilities for all personnel and the public, there is emergency communication in the form of two cellphones (city provided) and there is shelter on site to protect personnel of adverse weather.

- (VII) Restrict all waste handling (including loading and unloading) at the facility to paved surfaces;

All the roads and parking areas that are used by the public will be paved and hard surfaced.

- (VIII) Restrict the storage of solid wastes at the facility to containers, bins, lined pits or on paved surfaces, designated for such storage;

There is no waste that is stored on site except for waste in roll-off containers or transfer trailers that are waiting for disposal. This location is serving as the drop off location for Henderson County tire disposal the tires are brought in by individuals and or commercial tire businesses. Tires are processed as they come in through the industrial shredder. In the event that a tire can not be shred upon their arrival they will be stored in a 53' enclosed storage trailer until time of processing. After the tires are shred, they are loaded in to our disposal trailer with our other trash and transported to the landfill.

- (IX) Not burn solid wastes at the facility;

There is no burning at this facility: however, there will be a location on the property that will be utilized for clean brush burning (see attached drawing for area)

- (X) Prohibit scavenging of solid wastes at the facility and limit any salvaging to safe, designated areas and times;

There is no scavenging allowed at the facility: however, City personnel will be conducting salvaging of white goods and metals. These items will be placed into separate bins for recycling.

- (XI) Ensure that wind dispersal of solid wastes at or from the facility is adequately controlled, and that windblown litter and other loose, unconfined solid wastes are collected daily and properly disposed;

There are catch fences in place to help control windblown litter. Additionally, there is a litter pick up crew onsite who help control windblow litter.

(XII) Ensure that all liquids which either drain from solid wastes or are created by washdown of equipment at the facility are collected and directed to either:

- I. A wastewater treatment facility permitted to receive such wastewaters under T.C.A. §§ 69-3-101 et seq. (Tennessee Water Quality Control Act), or
- II. Other methods approved by the Commissioner.

All liquids will be collected or absorbed with pads to prohibit runoff to stormwater. The upper pad will be pressure washed toward the pit area where it will drain into a single collection system for proper handling. The liquid will be collected into a 1,000-gallon tank. The tank will be checked weekly by the operator to ensure that adequate collection is achieved. The liquids will be pumped by the City of Lexington Wastewater Division and taken to the wastewater treatment facility located at 677 South Main Street for disposal.

(XIII) Ensure that special wastes are not received, unless:

- I. Such receipt has been specifically approved in writing by the Commissioner, and
- II. Special procedures and/or equipment are utilized to adequately confine and segregate the special wastes;

This facility does not accept special waste at this time. If special wastes are accepted in the future, it will be with the approval of the commissioner.

(XIV) Have alternative arrangements (e.g., contracts with other facilities) for the proper processing or disposal of the solid wastes authorized to be managed at the facility in the event the facility cannot operate;

This facility acts as a transfer station in addition it is capable of shredding waste tires and C & D material. All waste is transported offsite for disposal. In the event that the facility is temporarily unavailable, the city trucks will transport the waste to a Class 1 Landfill belonging to the contractor. All waste tires will be transferred back to Henderson County Solid Waste for management and will not be stored on site.

(XV) Properly maintain and locate fire suppression equipment (e.g., fire extinguishers, water hoses) and make the equipment continuously available in sufficient quantities to control accidental fires that may occur

The facility will have sufficient fire suppression equipment for each piece of equipment onsite and any additional equipment as required by local codes. Fire extinguishers (Class ABC) will be located at the transfer station, scale house, and on the loader.

(XVI) Manage all wastes residues resulting from processing activities at the facility in accordance with this chapter or Chapter 0400-12-01 (Hazardous Waste Management, whichever is applicable, and/or with any other applicable state or federal regulations governing waste management

The operators of the facility will manage all wastes residues resulting from processing activities at the facility in accordance with the Chapter 0400-12-01 (Hazardous Waste Management, whichever is applicable, and/or with any other applicable state or federal regulations governing waste management.

(XVII) Install the processing equipment on-site and ensure it is ready for use before accepting solid waste for storage or processing

The owner/operator of the facility will install the processing equipment on-site and ensure that it is ready for use before accepting solid waste for processing.

(XVIII) Prior to receiving solid waste for processing, or within 90 days of the effective date of these rules, if authorized and operating on the effective date of these rules;

- I. File with the Commissioner a performance bond or equivalent cash or securities, payable to the State of Tennessee in an amount determined by the Commissioner to be sufficient to ensure the proper operation, closure, and post closure care of the facility;
- II. Submit financial assurance instruments that are specified in subparagraph (3)(d) of Rule 0400-11-01-.03; and
- III. Ensure that the financial assurance meets the criteria set forth in T.C.A. 68-211-116(a) and complies with subparagraph (3)(b) of Rule 0400-11-01-.03.

The tires are being processed and sent for disposal as they arrive. If for any reason tires cannot be processed immediately, they will be contained to a 53" trailer. If tires do begin to accumulate the city will notify TDEC

(XIX) Maintain records documenting the amounts of the different types of solid waste at the facility, including, but not limited to, the amounts stored to be processed, in process, and that have completed processing, in order to determine processing completion within one year;

The City of Lexington will maintain a record of how many tires are being shred and disposed of at this facility.

The owner/operator of a solid waste processing facility which has a solid waste storage capacity of 1000 cubic yards or greater shall file with the Commissioner a performance bond or equivalent cash or securities, payable to the State of Tennessee. Such financial assurance is intended to ensure that adequate financial resources are available to the Commissioner to insure the proper operation, and post closure care of the facility. The types of financial assurance instruments that are acceptable are those specified in 1200-01-07.03(3)(d). Such financial assurance shall meet the criteria set forth in T.C.A. 68-211-116(a) and at rule 1200-01-07-.03(3)(b).

(ii) When closing the facility, the owner or operator of a processing facility shall:

(I) Remove all solid wastes and solid waste residues for proper disposal; and

In the event of closing, all waste will be removed and properly disposed of in accordance to all laws and regulations.

(II) Notify the Commissioner in writing of the completion of closure of the facility and include a certification that the facility has been closed by removal of all solid waste and residues

In the event of a closure, the Commissioner will be notified in writing with the assurance of all waste being removed and disposed of properly.

Permit No SWP _____
(For SWM office use only.)

**PERMIT-BY-RULE PROCESSING FACILITY
FINANCIAL ASSURANCE WORKSHEET**

FACILITY NAME: City of Lexington Transfer Station

1. The maximum storage capacity for solid waste in cubic yards:
Attach a sketch and/or calculation to support this number.

_____ -0- _____ yd³
 2. The cost of transporting to a disposal site (The cost per yd³ times the amount shown above.):

\$ _____ -0- _____
 3. The cost (tipping fee, surcharges, etc.) to dispose of this volume of waste:

\$ _____ -0- _____
 4. Contingency fee of 5%

\$ _____ -0- _____
 5. Items 2+3+4= Total cost.

\$ _____ -0- _____
- Total Amount Due

\$ _____ -0- _____

Signed 

To the best of my knowledge, the above
information is correct and complete.

Return to: TN Department of Environment and Conservation
Division of Solid Waste Management
ATTN: Permits Administration
William R. Snodgrass Tennessee Tower
312 Rosa L. Parks Avenue, 14th Floor
Nashville, TN 37243

TERMINATOR

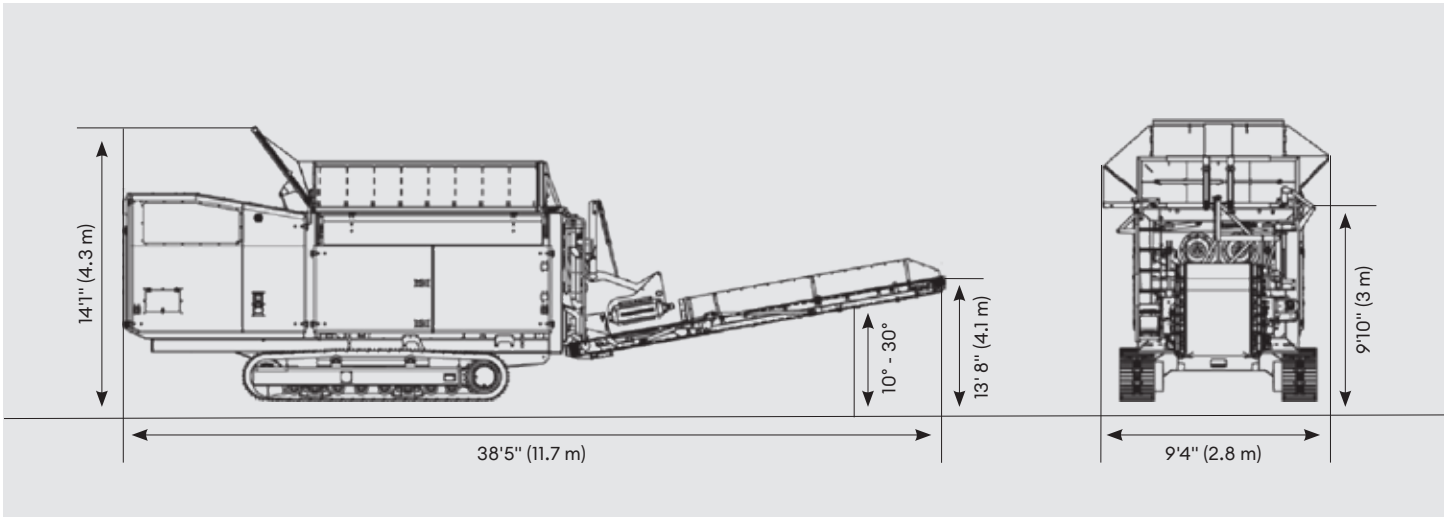
Low-Speed, Single-Shaft Waste Shredder



The Terminator is a low-speed, high-torque, single-shaft industrial shredder designed to process nearly all difficult waste types, including heavy C&D debris, bulky waste, white goods, mattresses, tires and municipal solid waste (MSW). Achieve a variety of output particle sizes with the adjustable cutting gap and counter comb. Easily swap shredding units to configure from coarse pre-shredding to defined shredding.

- ▶ Remote-controlled hopper with 11-foot feed opening
- ▶ Hydraulic drum drive with overload protection and reversing function features
- ▶ Robust teeth in a spiral arrangement for maximum tearing while keeping shredding even

Product Overview



TERMINATOR Technical Specifications

Machine Model	3400 S	6000 S
Power		
Diesel Engine / Horsepower:	CAT® C9 Tier 4 Final / 330 HP	CAT® C18 Tier 4 Final / 600 HP
Proportion (dependent on equipment)		
Transport Dimensions:	22'9" x 9'4" x 11'4" (6.9 x 2.8 x 3.4 m)	
Working Dimensions:	38'5" x 9'4" x 14'1" (11.7 x 2.8 x 4.3 m)	
Weight:	~57,000 lbs	~60,000 lbs
Performance (dependent on material)		
Maximum Throughput:	up to 55 tons/hr	up to 110 tons/hr

Komptech Americas, LLC
6345 Downing Street, Denver, CO 80216

[t] +1 720.890.9090
[e] info@komptechamericas.com

We reserve the right to make technical changes due to ongoing development. USA2022-12

Scan this code to learn more about the
TERMINATOR and watch it in action!

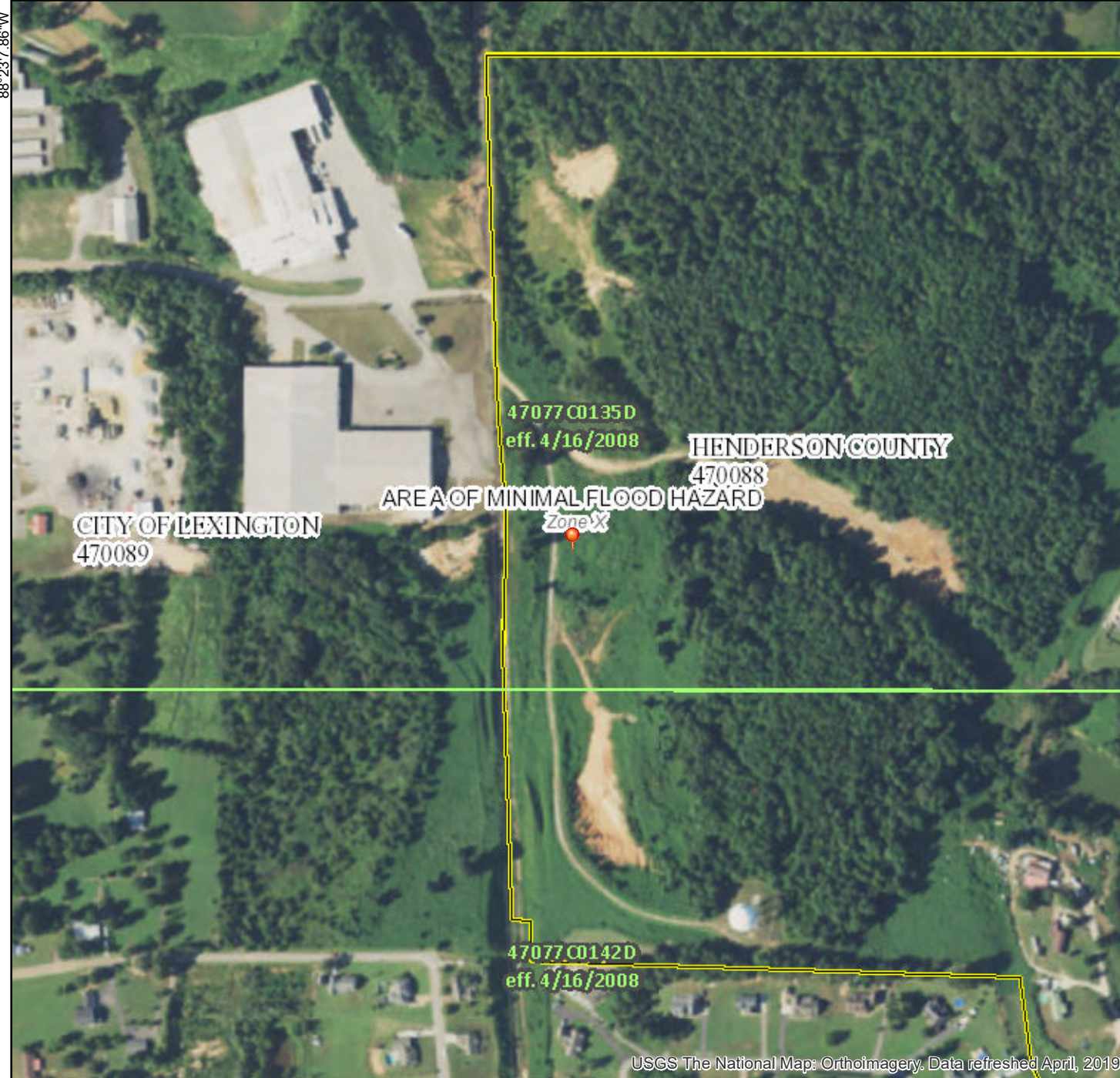


Product Overview

National Flood Hazard Layer FIRMette



35°41'33.69"N



0 250 500 1,000 1,500 2,000 Feet 1:6,000

35°41'4.47"N

Legend

SEE FIS REPORT FOR DETAILED LEGEND AND INDEX MAP FOR FIRM PANEL LAYOUT

SPECIAL FLOOD HAZARD AREAS		Without Base Flood Elevation (BFE) Zone A, V, A99
		With BFE or Depth Zone AE, AO, AH, VE, AR
		Regulatory Floodway
OTHER AREAS OF FLOOD HAZARD		0.2% Annual Chance Flood Hazard, Areas of 1% annual chance flood with average depth less than one foot or with drainage areas of less than one square mile Zone X
		Future Conditions 1% Annual Chance Flood Hazard Zone X
		Area with Reduced Flood Risk due to Levee. See Notes. Zone X
		Area with Flood Risk due to Levee Zone D
OTHER AREAS		Area of Minimal Flood Hazard Zone X
		Effective LOMRs
GENERAL STRUCTURES		Area of Undetermined Flood Hazard Zone D
		Channel, Culvert, or Storm Sewer
		Levee, Dike, or Floodwall
OTHER FEATURES		Cross Sections with 1% Annual Chance Water Surface Elevation
		Coastal Transect
		Base Flood Elevation Line (BFE)
		Limit of Study
		Jurisdiction Boundary
		Coastal Transect Baseline
MAP PANELS		Profile Baseline
		Hydrographic Feature
		Digital Data Available
		No Digital Data Available
		Unmapped

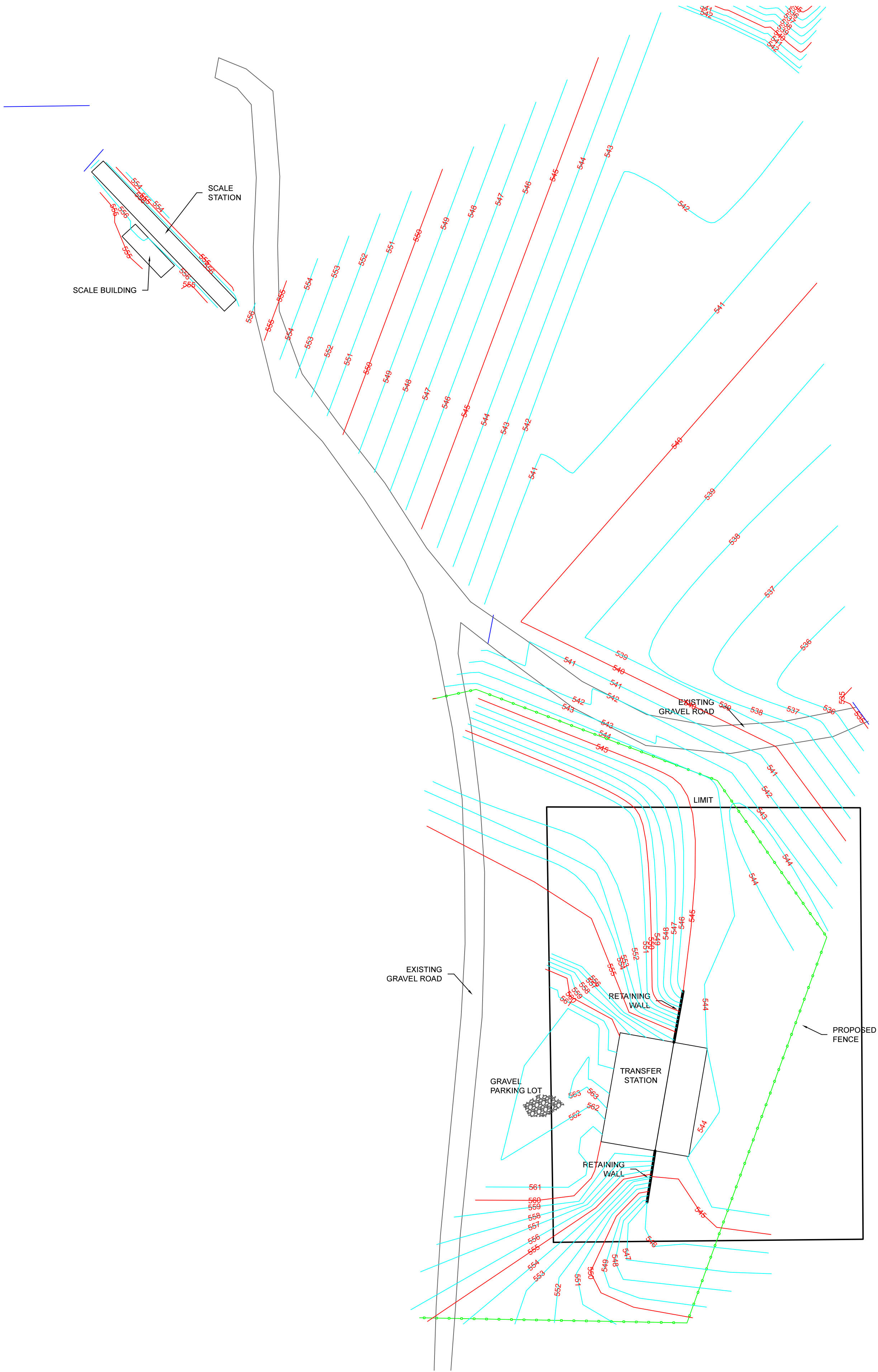
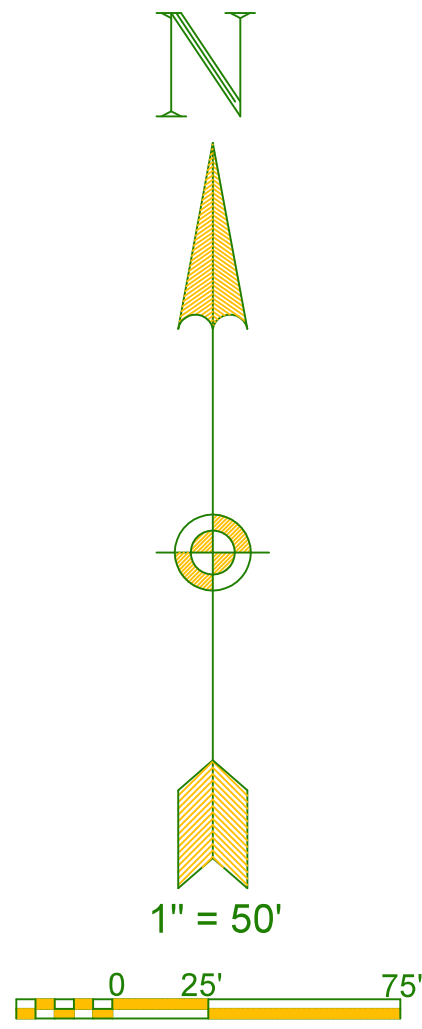


The pin displayed on the map is an approximate point selected by the user and does not represent an authoritative property location.

This map complies with FEMA's standards for the use of digital flood maps if it is not void as described below. The basemap shown complies with FEMA's basemap accuracy standards

The flood hazard information is derived directly from the authoritative NFHL web services provided by FEMA. This map was exported on **12/3/2019 at 12:05:46 PM** and does not reflect changes or amendments subsequent to this date and time. The NFHL and effective information may change or become superseded by new data over time.

This map image is void if the one or more of the following map elements do not appear: basemap imagery, flood zone labels, legend, scale bar, map creation date, community identifiers, FIRM panel number, and FIRM effective date. Map images for unmapped and unmodernized areas cannot be used for regulatory purposes.



REVISIONS		
DATE	DESCRIPTION	BY:

ENGINEERING • SURVEYING

P. O. BOX 873
25 COURT ST
SAVANNAH, TN 38372

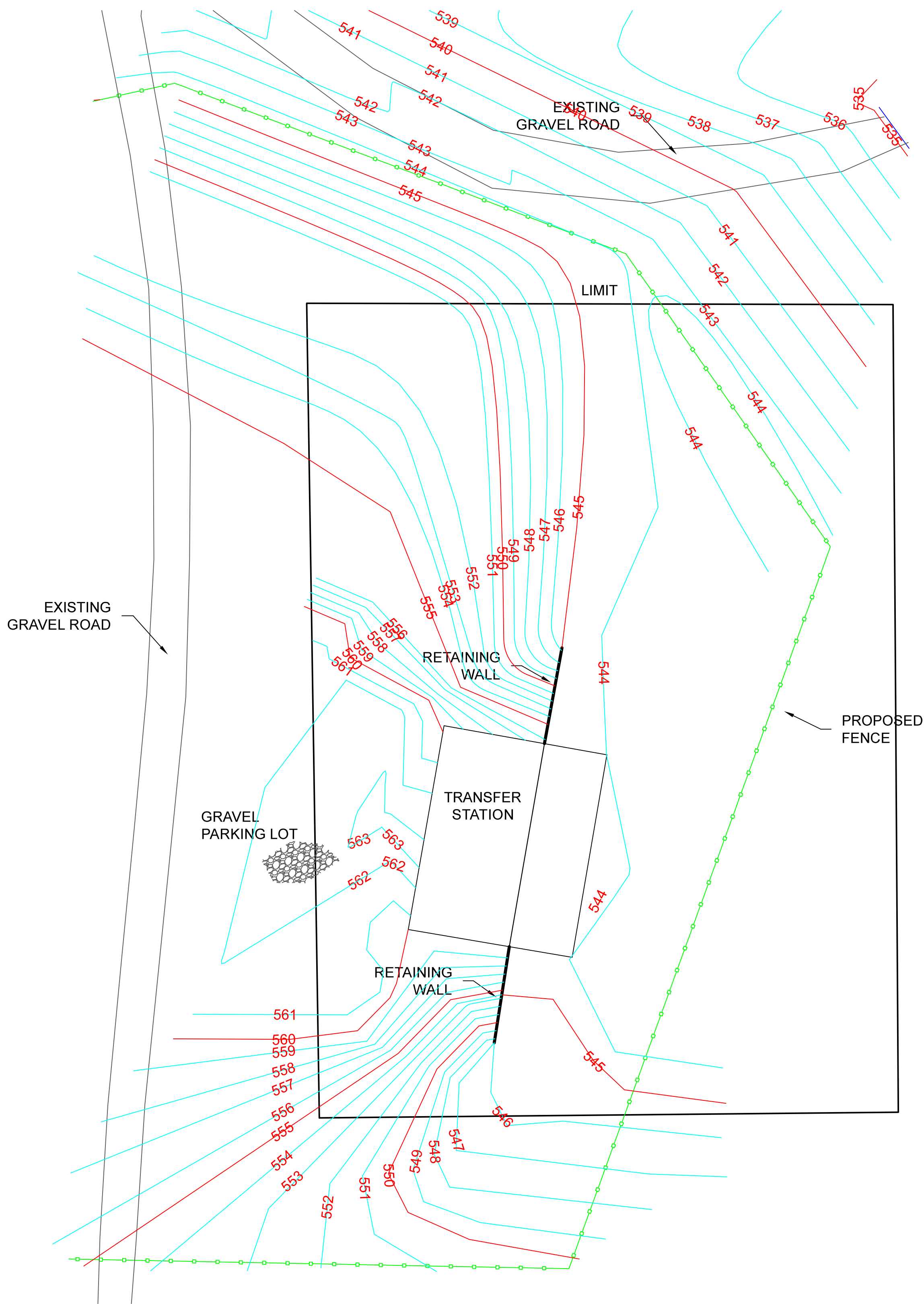
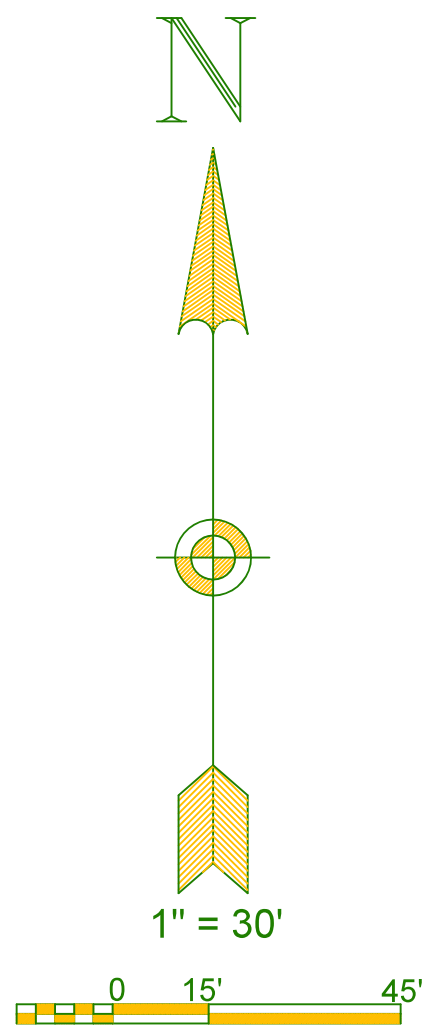
731-925-2983
731-925-8152 (FAX)
FANDM@FANDYCONSULTING.COM

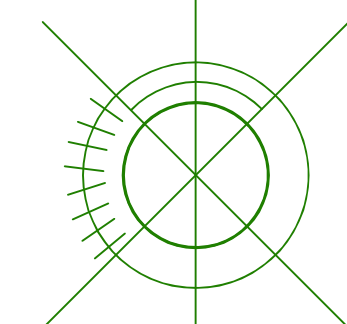
DATE:
11/19/2019
SCALE:
1" = 50'
DRAWN BY:
R.K.L.
APPROVED BY:
W.R.A.

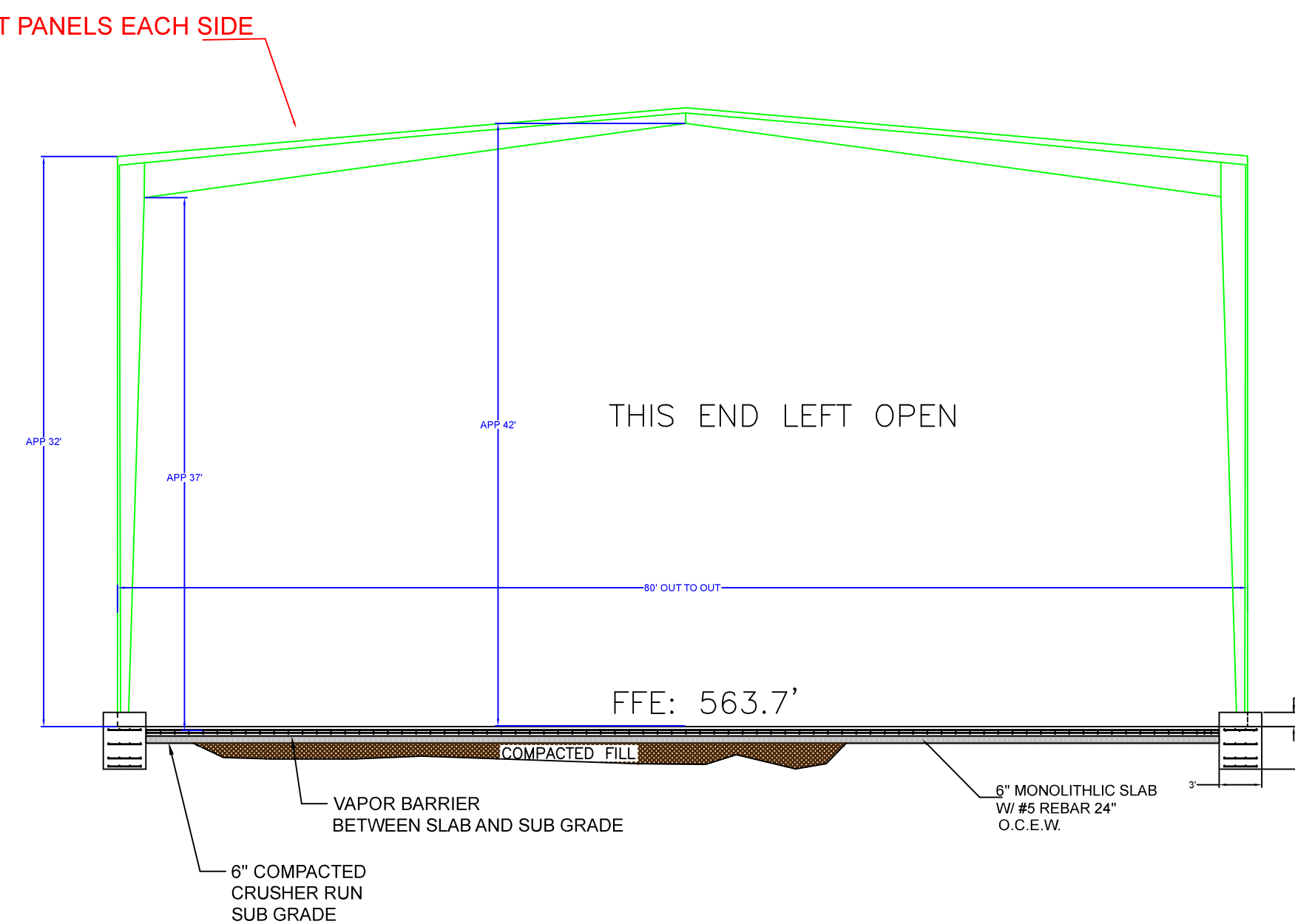
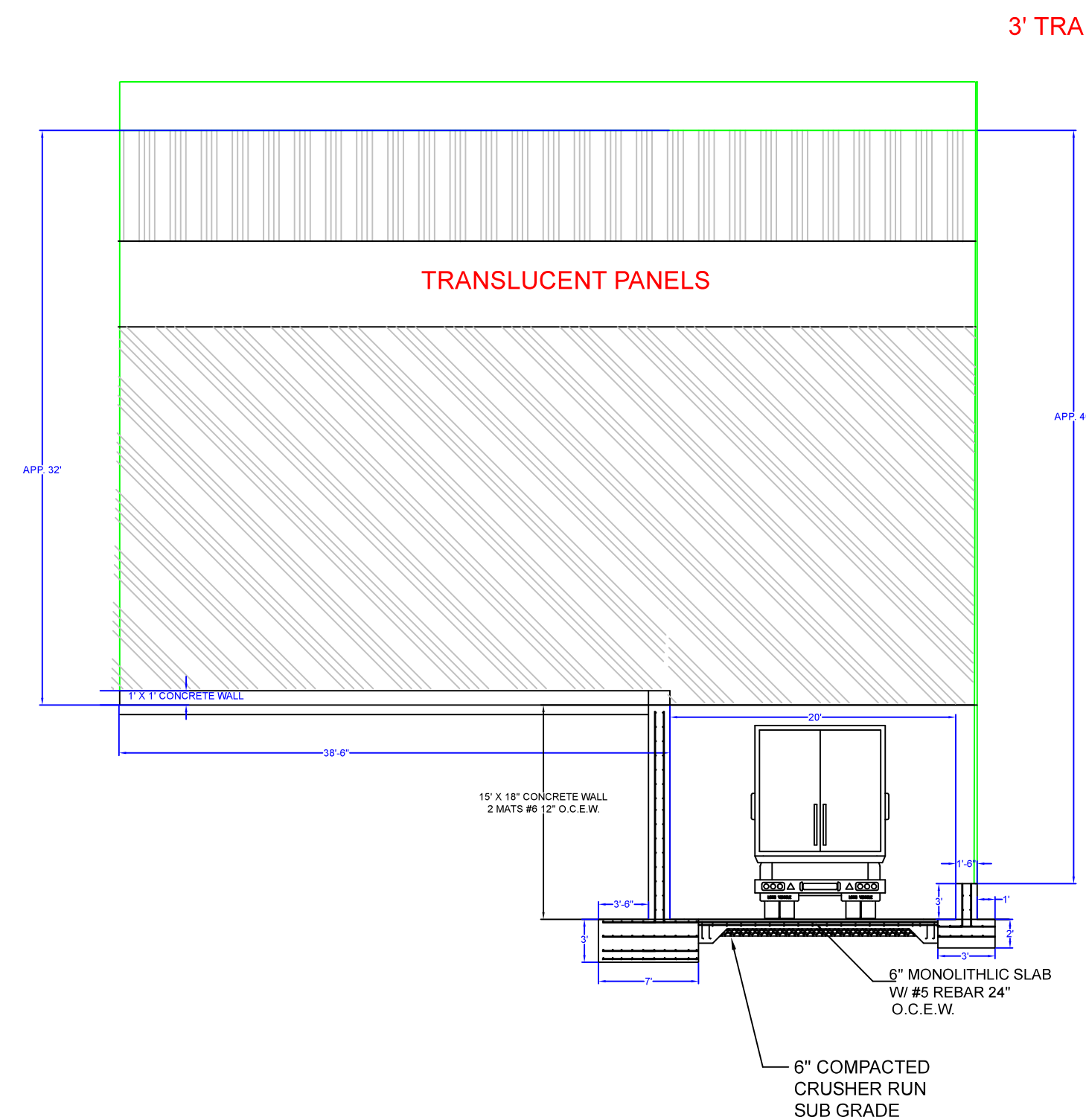
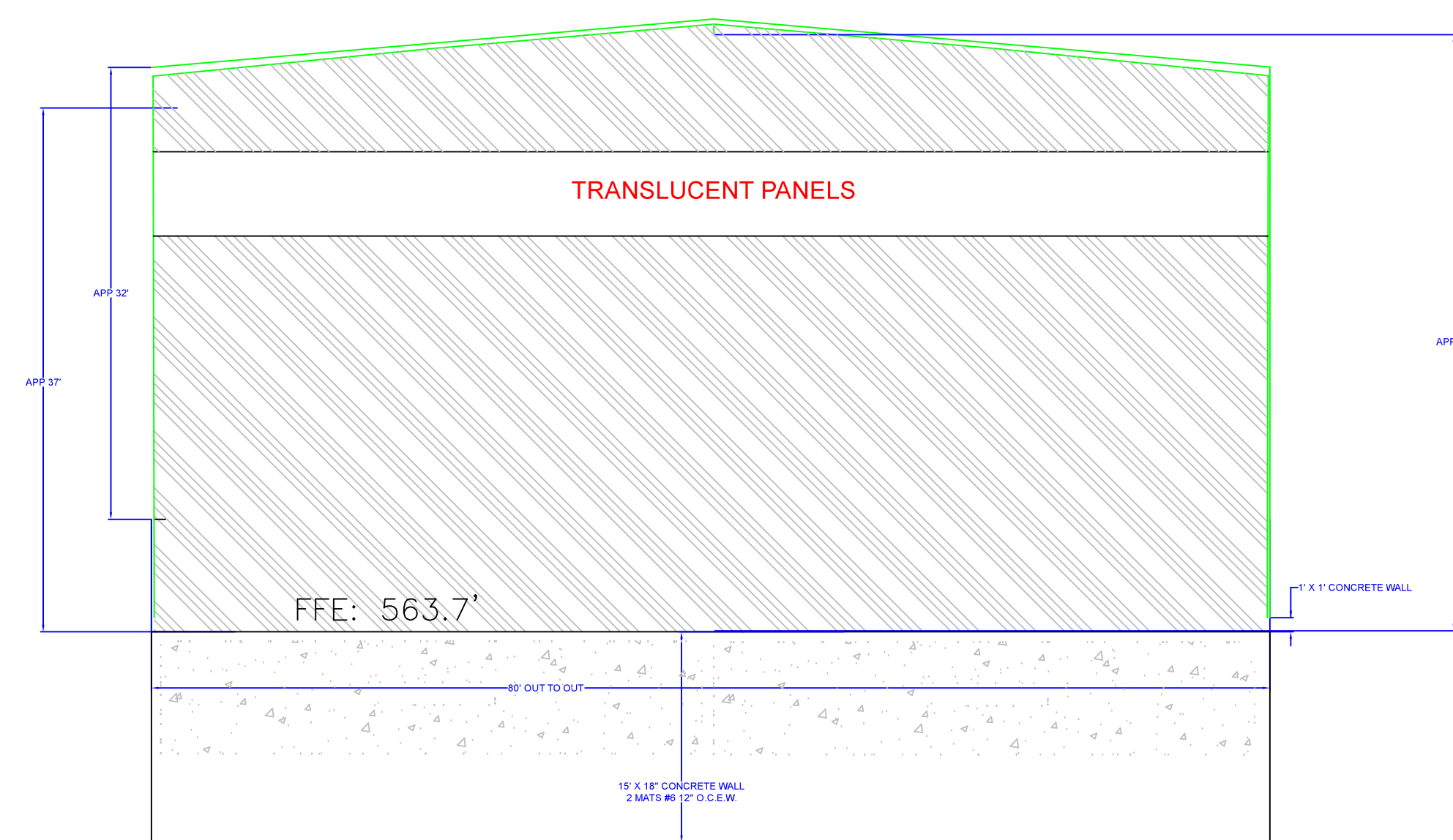
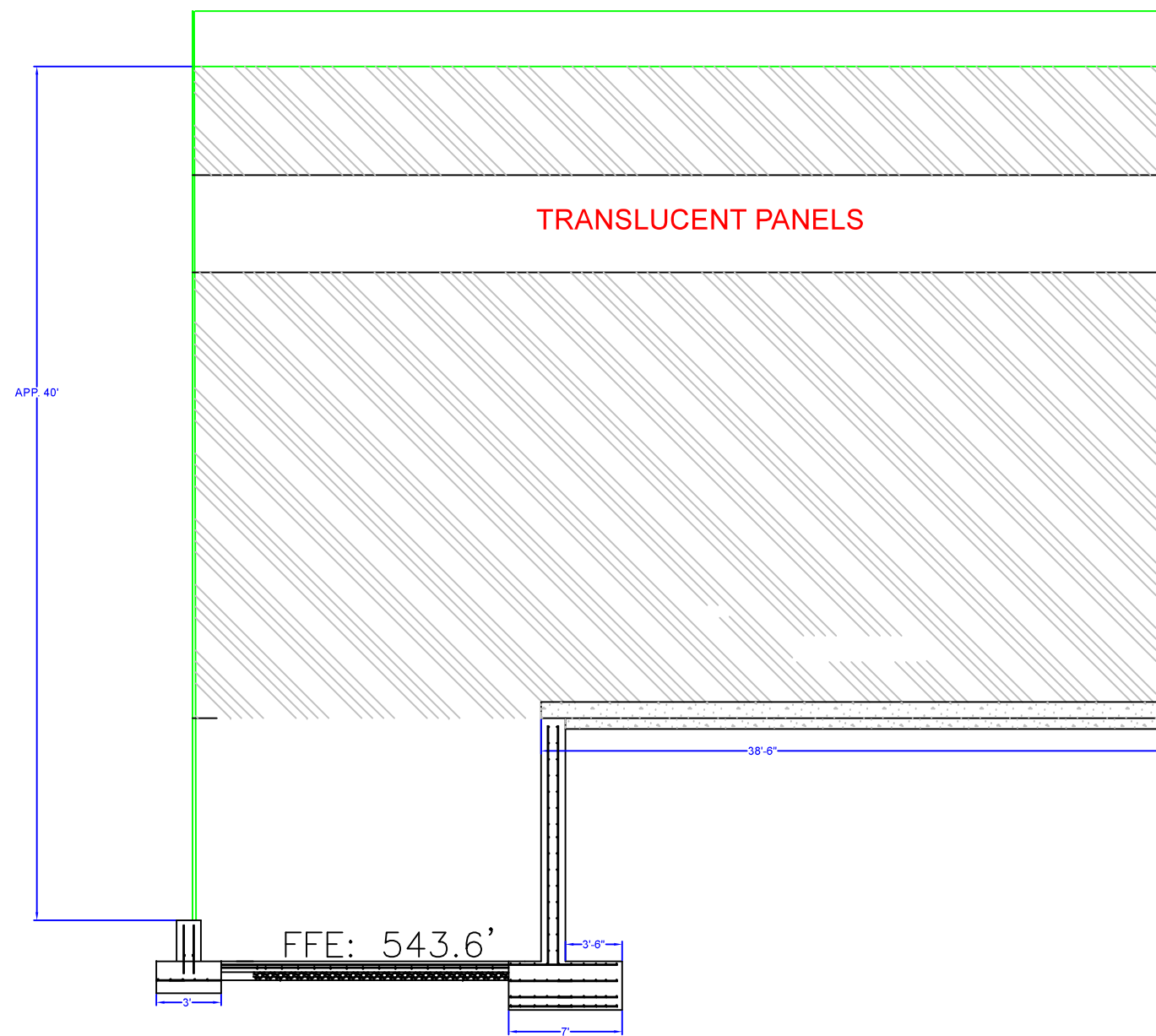
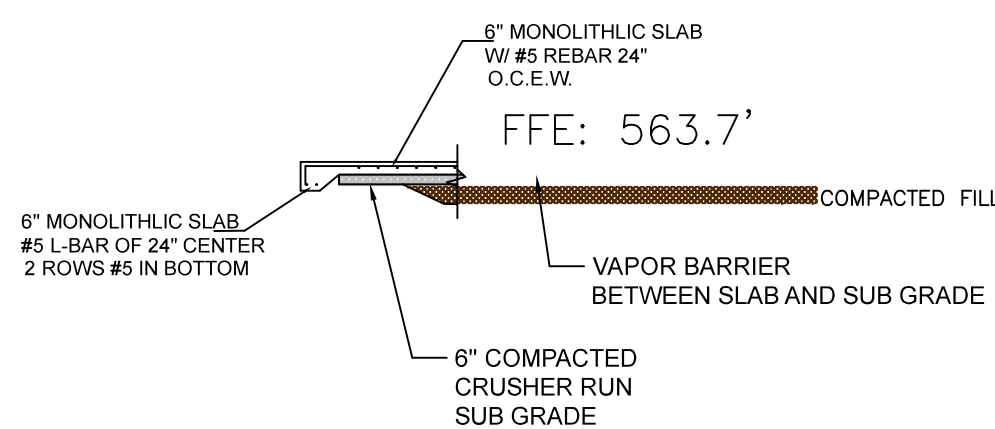
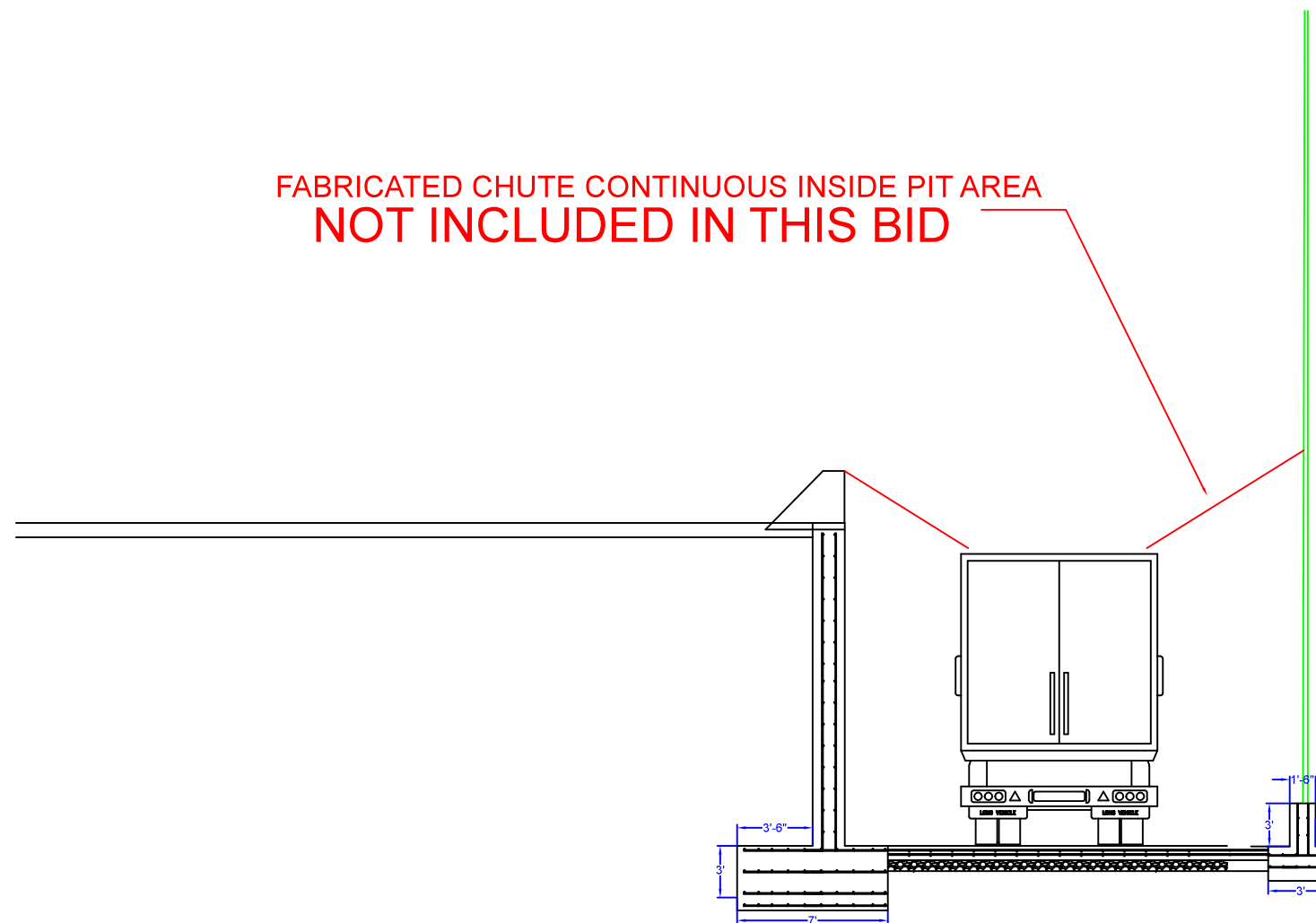
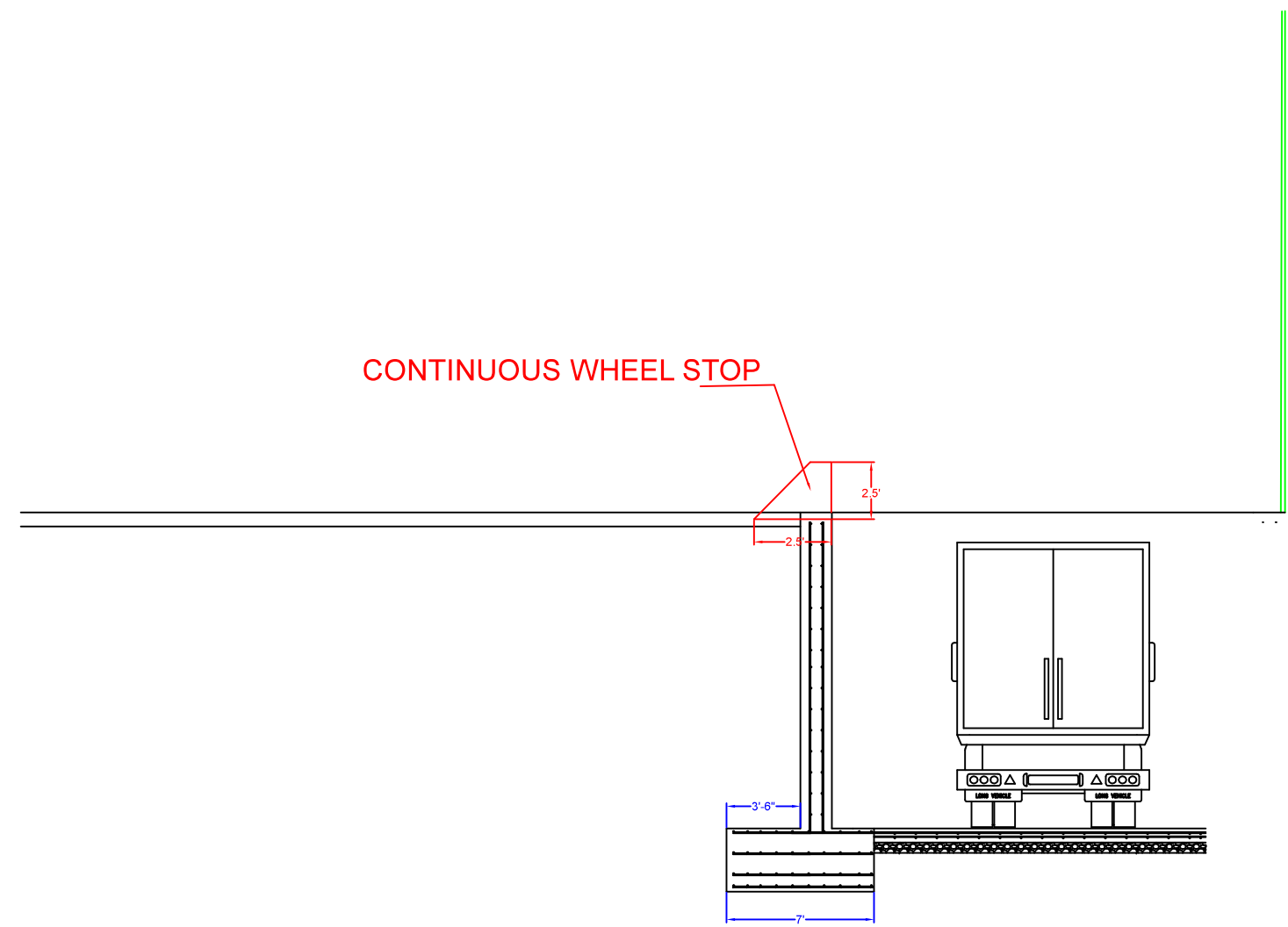
AS BUILT SITE PLAN
Transfer Station
CITY OF LEXINGTON

FIFTH CIVIL DISTRICT
HENDERSON COUNTY, TENNESSEE

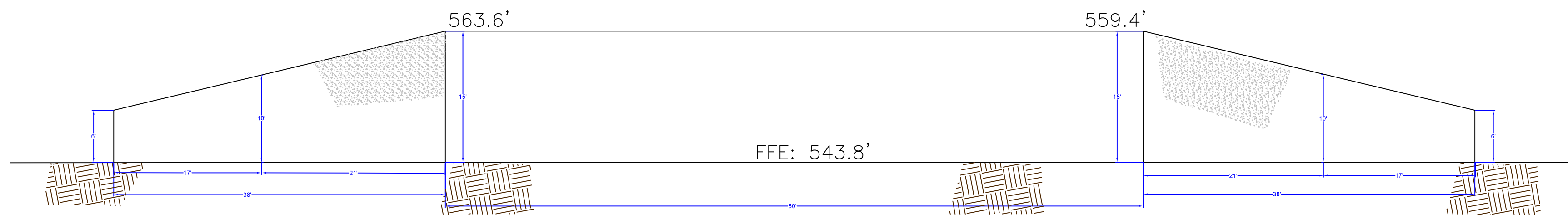
PROJECT NO.
18-034
SHEET NO.
1 OF 3



PROJECT NO. 18-034		SHEET NO. 2 OF 3		AS BUILT Transfer Station CITY OF LEXINGTON FIFTH CIVIL DISTRICT HENDERSON COUNTY, TENNESSEE		APPROVED BY: W.R.A.		DRAWN BY: R.K.L.		SCALE: 1" = 30'		DATE: 11/19/2019		<div> F&M CONSULTING, INC. ENGINEERING • SURVEYING P.O. BOX 873 25 COURT ST SAVANNAH, TN 38372 731-925-2983 731-925-8162 (FAX) FANDM@FANDYCONSULTING.COM</div>		REVISIONS	
						DATE	DESCRIPTION	BY:									



ALL COLUMN FOOTINGS CAN BE POURED INDEPENDENT OF THE SLAB
UPPER AND LOWER SLAB TO BE FLOATING MONOLITHIC W/ TURNDOWN
WALL HEIGHT AND TOP OF COLUMN FOOTING TO MATCH
EXTEND REBAR 6" INTO 1' SIDE WALLS (CURBING)
(SEE PMB DRAWINGS FOR COLUMN FOOTING LOCATIONS)



ELEVATION VIEW OF RETAINING WALL ALONG BUILDING
SEE DETAIL ABOVE FOR FOOTING DETAIL ALONG BUILDING
SEE SCHEDULE ON SHEET 2 FOR WING WALL DETAILS

REVISIONS				
DATE	DESCRIPTION	BY	P.A.M.	P.A.M.
03/14/19	DIMENSIONS ADDED: FFE REVISED			
07/10/19	CHUTE EXCLUDED FROM BIDS			
	REVISED FOR FULL SIDING ON SIDES NO CONCRETE WALLS			
PROJECT NO. 18-034				
SHEET NO. 3 OF 3				
AS BUILT ELEVATIONS AND DETAILS Transfer Station CITY OF LEXINGTON FIFTH CIVIL DISTRICT HENDERSON COUNTY, TENNESSEE				
DATE: 10/02/2018 SCALE: 1" = 10' DRAWN BY: P.A.M. APPROVED BY: W.R.A.				
F&M CONSULTING, INC. P.O. BOX 873 731-925-2983 731-925-8152 (FAX) 25 COURT ST SAVANNAH, TN 38572 FANDY@BELLSOUTH.NET				
ENGINEERING • SURVEYING				