



**STATE OF TENNESSEE
DEPARTMENT OF ENVIRONMENT AND CONSERVATION
DIVISION OF WATER RESOURCES**

Nashville Environmental Field Office
711 R.S. Gass Boulevard
Nashville, TN 37216
Phone 615-687-7000 Statewide 1-888-891-8332 Fax 615-687-7078

June 21, 2022

ATMOS Energy Corporation
PO Box 650205
Dallas, Texas, 75265

Re: Hydrologic Determination (DWR ID No. 31305)
ATMOS – Brinkley Road Replacement Project

Dear Landowner:

On June 13, 2022, the Division of Water Resources (division) received a jurisdictional waters report submitted on your behalf by Kayla Theilig (TN QHP IT) with Pond & Company QHP Submittal. These water features are located on property located at 35.858876, -86.483878 (Lat/Long), in Murfreesboro, Rutherford County, Tennessee. Please note that all geographic coordinates provided in this letter have a limited precision and should be considered approximate.

Please see the attached map and table for a summary of the jurisdictional determinations made by the division for the water features on site. These determinations are based on the information and documentation in the submitted report as well as the division's observations, rules, and guidance regarding hydrologic determinations.

Alterations to streams, wetlands, or other waters may only be performed under the coverage of, and conformance to, a valid *Aquatic Resource Alteration Permit (ARAP)* issued by the division, except where authorized by Rule. ARAP applications and provisions are available on-line at <http://www.tn.gov/environment/article/permit-water-aquatic-resource-alteration-permit>.

Any alterations to wet weather conveyances must be made in accordance with the requirements of Tenn. Code Ann. § 69-3-108(q).

Hydrologic determinations are advised and governed by Tennessee Department of Environment and Conservation (TDEC) rules and regulations, and therefore only apply to the State's permitting process. Because these and other various water features on-site may potentially also be considered jurisdictional Waters of the United States, any alterations to them should only be performed after consultation with the U.S. Army Corps of Engineers.

June 21, 2022

Page 2 of 4

Please be aware that my on-site observations or database review indicated that you may be asked, prior to receiving ARAP coverage, to coordinate with the Tennessee Wildlife Resources Agency (TWRA) and Division of Natural Areas (DNA) to determine if any special conditions are required to avoid and/or minimize harm to state or federally listed threatened, endangered, deemed in need of management, or species of special concern.

If the disturbed area of this project is one acre or greater, coverage under the *General NPDES Permit for Stormwater Discharges from Construction Activities (CGP)* will be required from this division before any clearing or earth moving activities are started. Information on the construction stormwater permit is available online at <http://www.tn.gov/environment/article/permit-water-npdes-stormwater-construction-permit>.

I appreciate the opportunity to assess the water features on site prior to site plan finalization and initiation of construction activities. Because natural variation and human activities can alter hydrologic conditions, the division reserves the right to reassess the status of the water features in the future.

Thank you for your interest in water quality in Tennessee. If you have any questions or need additional information, please contact me at 615-210-9771 or by email at jonathan.a.knudsen@tn.gov.

Sincerely,

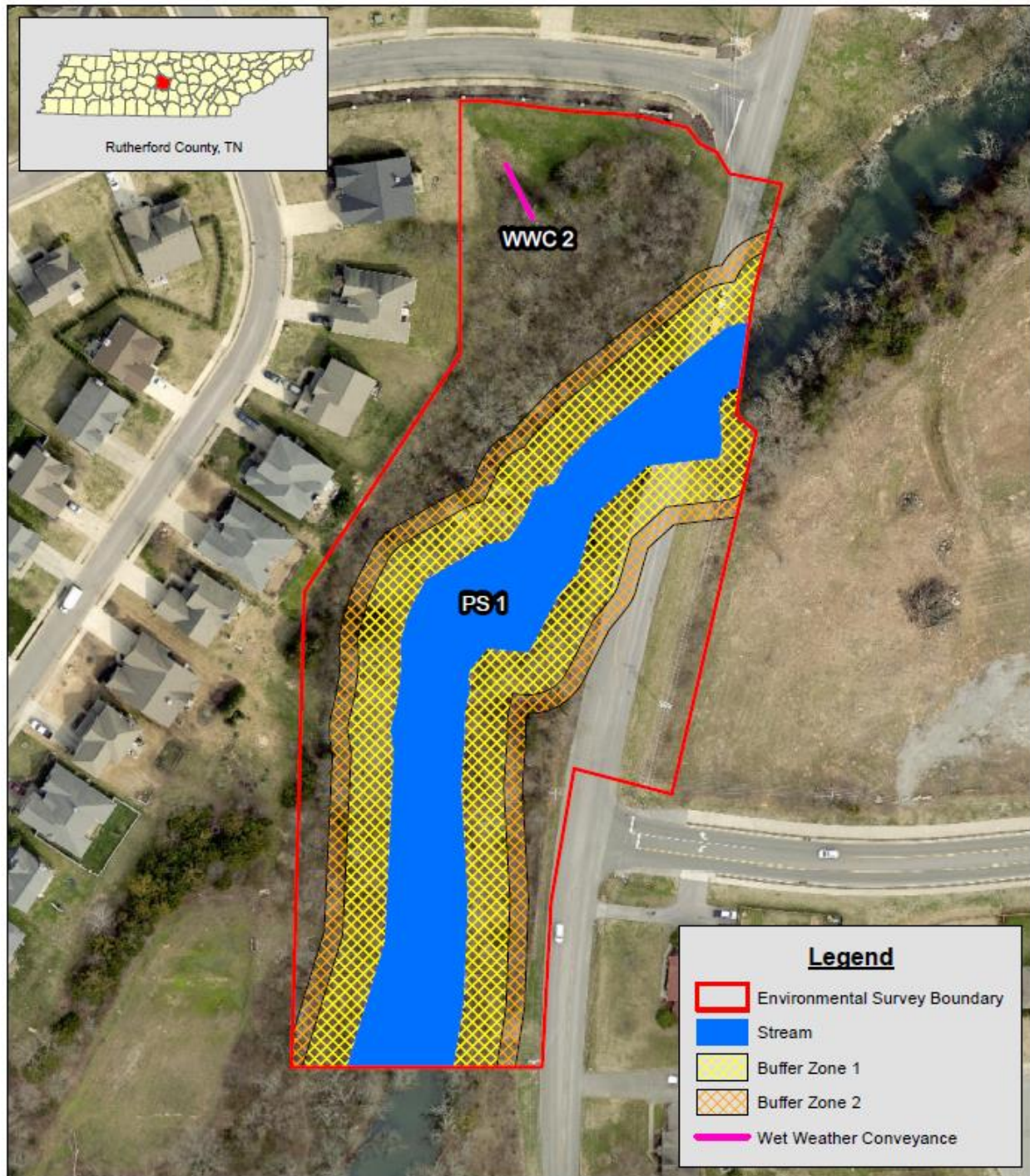
A handwritten signature in blue ink, appearing to read 'J. Knudsen', is written over a light blue horizontal line.

Division of Water Resources

cc:

U.S. Army Corp of Engineers, NashvilleRegulatory@usace.army.mil

Features	Classification	Start (Lat/Long)	End (Lat/Long)
PS 1	Perennial Stream	35.857239, -86.484432	35.858826, -86.483489
WWC 2	Wet Weather Conveyance	35.859262, -86.484160	35.859128, -86.484080



Service Layer Credits: Source: Esri, Maxar, GeoEye, Earthstar Geographics, CNES/Airbus DS, USDA, USGS, AeroGRID, IGN, and the GIS User Community

Figure 3
Aquatic Resources Map

POND



0 100 200 Feet
0 30 60 Meters

Brinkley Road Pipeline Replacement Project
Rutherford County, TN
June 2022

1 in = 100 ft

