

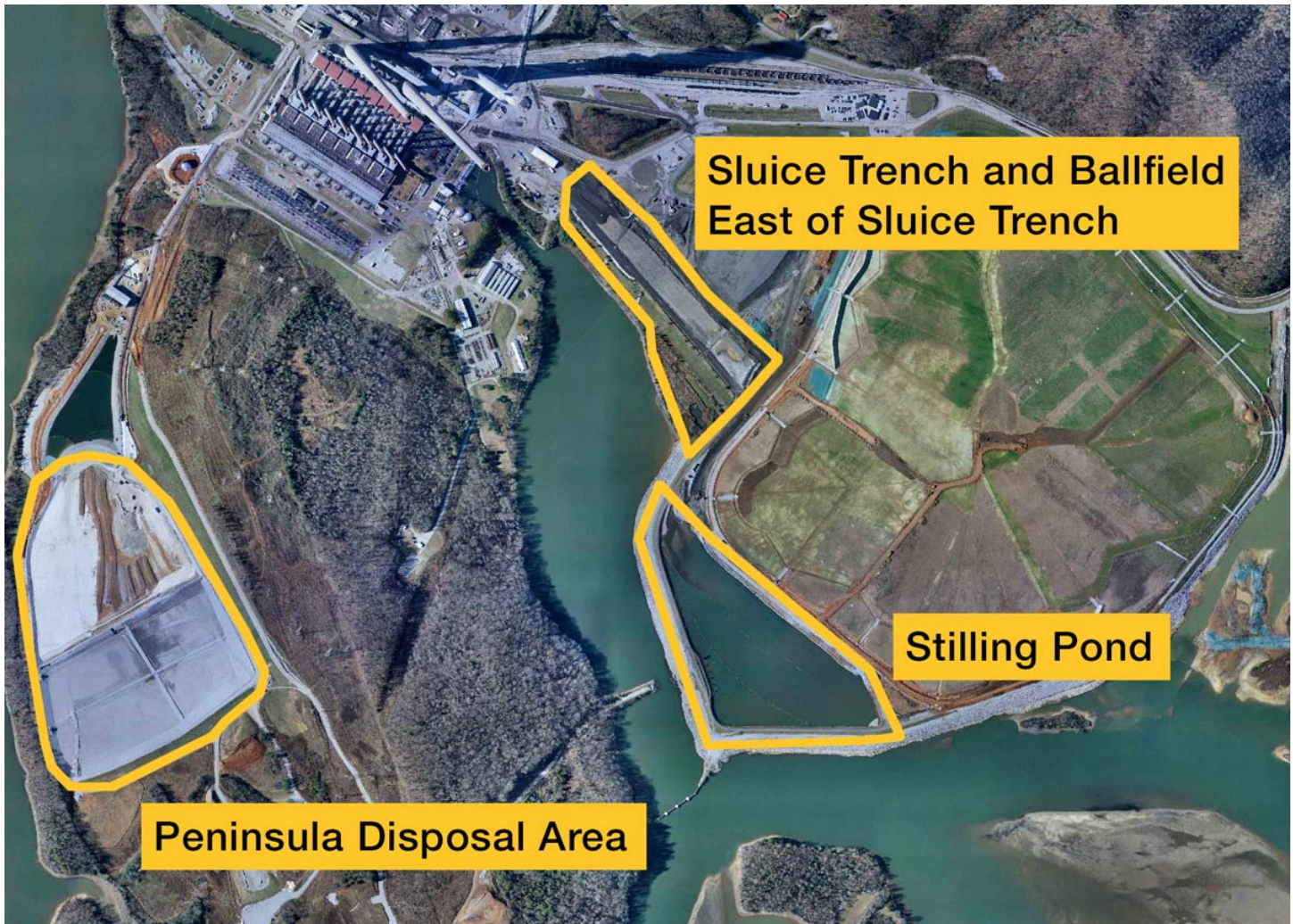


Share this page

You are here: [Home](#) / [Environment](#) / [Environmental Stewardship](#) / [Coal Combustion Residuals](#)

Kingston Coal Combustion Residuals

Kingston has nine coal-fired generating units with a summer net capacity of 1,398 megawatts.



Unit boundaries shown are approximate and may vary in the technical demonstrations.

CCR landfills and surface impoundments on the Kingston site include:

[Landfill - Peninsula Disposal Area](#)

[Surface Impoundment - Sluice Trench and Ballfield East of Sluice Trench](#)

[Surface Impoundment - Stilling Pond](#)

Employees and Retirees

TVA Kids

Doing Business With TVA

TVA Privacy Policy

Freedom of Information Act

Legal Notices

Information Quality

No Fear Act Data

Equal Employment Opportunity Policy

Accessibility Information

Inspector General

TVA Police

Energy

Environment

Economic Development

Newsroom

Careers


About

Investor Relations

 Facebook

 Twitter

 Instagram

 YouTube

 LinkedIn

 Flickr

Tennessee Valley Authority

400 West Summit Hill Drive

Knoxville TN 37902

(865) 632-2101

tvainfo@tva.com