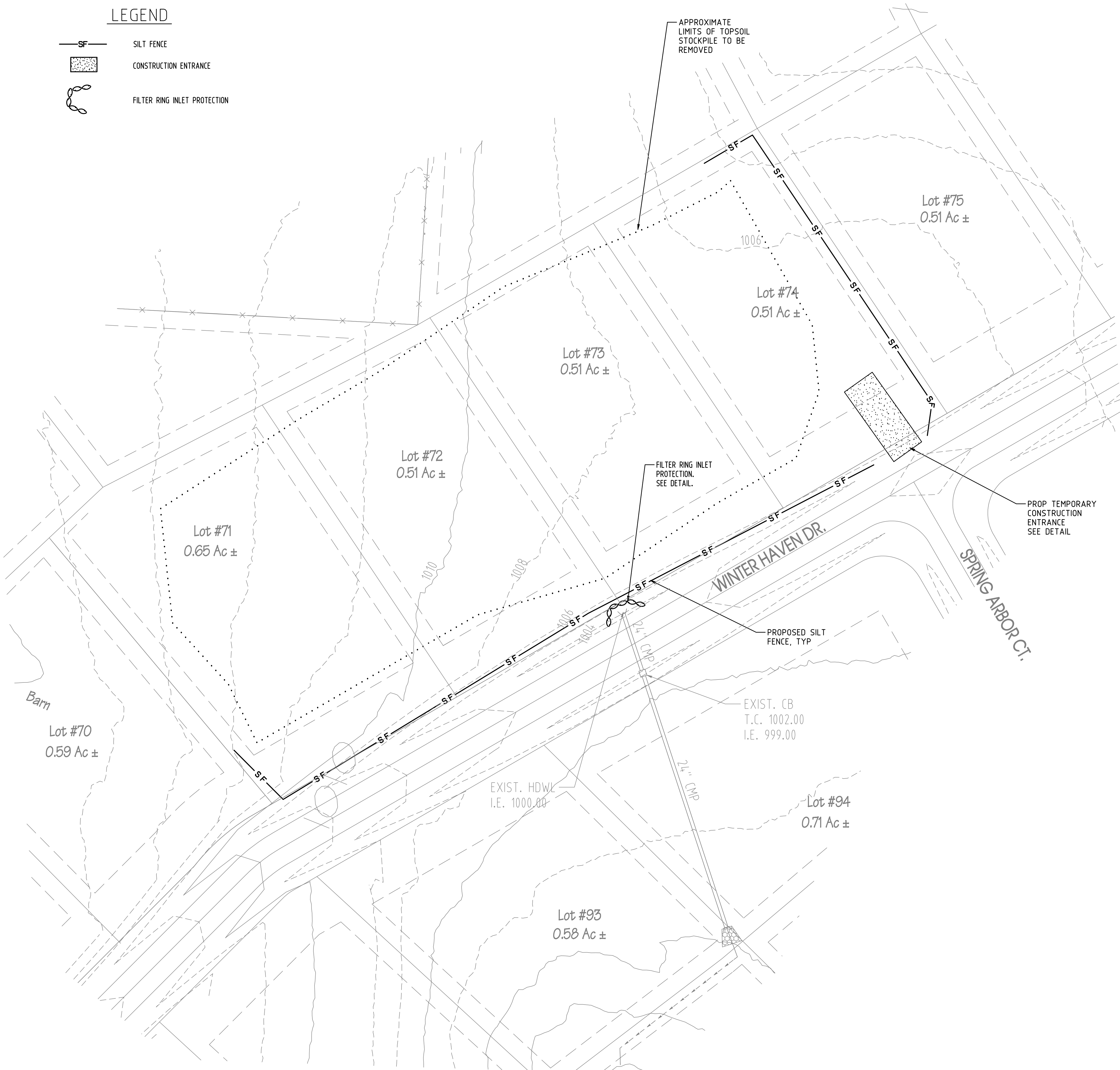


LEGEND

- SF

SILT FENCE
- CONSTRUCTION ENTRANCE
- FILTER RING INLET PROTECTION



EROSION CONTROL PLAN - NOTES:

- UNLESS OTHERWISE INDICATED, ALL VEGETATIVE AND STRUCTURAL EROSION AND SEDIMENT CONTROL PRACTICES WILL BE CONSTRUCTED AND MAINTAINED ACCORDING TO THE MINIMUM STANDARDS AND SPECIFICATIONS OF THE TENNESSEE EROSION AND SEDIMENT CONTROL MANUAL.
- NOT USED.
- ALL EROSION AND SEDIMENT CONTROL MEASURES ARE TO BE PLACED PRIOR TO OR AS THE FIRST STEP IN CLEARING.
- A COPY OF THE APPROVED EROSION AND SEDIMENT CONTROL PLAN SHALL BE MAINTAINED ON THE SITE AT ALL TIMES.
- PRIOR TO COMMENCING LAND DISTURBING ACTIVITIES IN AREAS OTHER THAN INDICATED ON THESE PLANS (INCLUDING, BUT NOT LIMITED TO, OFF-SITE BORROW OR WASTE AREAS), THE CONTRACTOR SHALL SUBMIT A SUPPLEMENTARY EROSION CONTROL PLAN TO THE OWNER FOR REVIEW AND APPROVAL BY THE PLAN APPROVING AUTHORITY.
- THE CONTRACTOR IS RESPONSIBLE FOR INSTALLATION OF ANY ADDITIONAL EROSION CONTROL MEASURES NECESSARY TO PREVENT EROSION AND SEDIMENTATION AS DETERMINED BY THE PLAN APPROVING AUTHORITY.
- ALL DISTURBED AREAS ARE TO DRAIN TO APPROVED SEDIMENT CONTROL MEASURES AT ALL TIMES DURING LAND DISTURBING ACTIVITIES AND DURING SITE DEVELOPMENT UNTIL FINAL STABILIZATION IS ACHIEVED.
- DURING DEWATERING OPERATIONS, WATER WILL BE PUMPED INTO AN APPROVED FILTERING DEVICE.
- THE CONTRACTOR SHALL INSPECT ALL EROSION CONTROL MEASURES PERIODICALLY AND AFTER EACH RUNOFF-PRODUCING RAINFALL EVENT. ANY NECESSARY REPAIRS OR CLEANUP REQUIRED TO MAINTAIN THE EFFECTIVENESS OF THE EROSION CONTROL DEVICES SHALL BE MADE IMMEDIATELY.
- SEDIMENT WILL BE REMOVED FROM ALL EROSION AND SEDIMENT CONTROLS BEFORE THE DESIGN CAPACITY OF THE STRUCTURE HAS BEEN REDUCED BY 50% . LITTER, CONSTRUCTION DEBRIS, AND CONSTRUCTION CHEMICALS EXPOSED TO STORM WATER WILL BE PICKED UP PRIOR TO ANTICIPATED STORM EVENTS, OR OTHERWISE BE PREVENTED FROM BECOMING A POLLUTANT SOURCE FOR STORM WATER DISCHARGES.
- STABILIZATION WILL BE ACCOMPLISHED AS SOON AS PRACTICAL AFTER ATTAINMENT OF FINAL GRADE AND NO LATER THAN (14) DAYS AFTER ATTAINING FINAL GRADE OR WHEN GRADING OPERATIONS CEASE FOR MORE THAN (14) DAYS. WHERE EARTH-DISTURBING ACTIVITY HAS TEMPORARILY CEASED, TEMPORARY STABILIZATION METHODS MAY INCLUDE SEED AND MULCH OR SEED AND EROSION CONTROL BLANKETS.
- AREAS TO RECEIVE PERMANENT VEGETATION SHALL BE PROTECTED WITH EROSION CONTROL BLANKETS ON AREAS WITH SLOPES STEEPER THAN 3:1. AREAS 3:1 AND FLATTER SHALL BE PROTECTED WITH STRAW.
- SITE OUTFALL 1 DRAINS TO THE EXISTING PIPE UNDER WINTER HAVEN DRIVE. TOTAL DRAINAGE AREA FOR THE OUTFALL IS 2.9 ACRES. AVERAGE SLOPE OF SITE IS APPROX. 4%. SLOPE OF UNNAMED PIPE IS APPROX 3%.
- NOT USED.
- AFTER SITE IS CLEARED, GRUBBED AND SMOOTH GRADED, CONTRACTOR SHALL INSTALL PERMANENT SEEDING & LANDSCAPING. ALL TEMPORARY EROSION & SEDIMENT CONTROL DEVICES SHALL BE REMOVED IF SITE IS DEEMED STABILIZED, INCLUDING AREAS DISTURBED DURING TEMPORARY MEASURE REMOVAL. AT THIS TIME, CONTRACTOR SHALL COMPLETE AND SUBMIT THE NOTICE OF TERMINATION.
- ANY STOCKPILE OF DIRT OR TOPSOIL SHALL RECEIVE TEMPORARY SEEDING. CONTRACTOR MAY CHOOSE ANY APPROPRIATE LOCATION FOR THE STOCKPILE AND SHALL INSTALL EROSION CONTROL DEVICES APPROPRIATE FOR THE LOCATION. CONTRACTOR SHALL KEEP RECORD OF ANY CHANGES TO THE EC PLANS/SWPPP ONSITE.

GENERAL NOTES

THE EROSION AND SEDIMENT CONTROLS SHOWN ON THIS DRAWING ARE A MINIMUM FOR A 2-YEAR 24-HOUR STORM EVENT.

INSPECTIONS WILL BE REQUIRED TWICE EACH CALENDAR WEEK AT LEAST 72 HOURS APART. INSPECTION RESULTS AND NOTES ABOUT ANY REPAIRS MADE SHALL BE KEPT IN A LOG AND MAINTAINED ON SITE. CONSTRUCTION STORM WATER INSPECTION CERTIFICATIONS SHALL BE FILLED OUT AT EACH TIME OF INSPECTION (APPENDIX C OF THE GENERAL PERMIT) TO DOCUMENT INSPECTIONS. THE INSPECTOR MUST BE QUALIFIED, AS PER TDEC REQUIREMENTS. OTHER DATA TO BE MAINTAINED INCLUDES: GRADING DATES, CEASE WORK DATES, STABILIZATION DATES, INSPECTION DATES, RAINFALL AMOUNTS, ETC.

STRAW BALES SHALL NOT BE USED AS A PRIMARY BMP; HOWEVER, THEY MAY BE USED AS A SUPPORT FOR OTHER BMP'S SUCH AS SILT FENCE.

ALL EROSION CONTROL MEASURES SHALL BE INSTALLED PER TDEC'S EROSION & SEDIMENT CONTROL HANDBOOK.

DATE

REVISIONS

BY

INITIAL STORM WATER
POLLUTION PREVENTION PLAN
AUTUMN WOODS
LOTS 71-74
3885 WINTER HAVEN DRIVE
COOKEVILLE, TENNESSEE

CLINTON ENGINEERING
ENGINEERING & SURVEYING SERVICES
380 SOUTH LOWE AVENUE, SUITE 6
COOKEVILLE, TN 38501
931-372-0427

SCALE: 1"= 30'

OR JN

CHK PS

PROJ: 20-006B

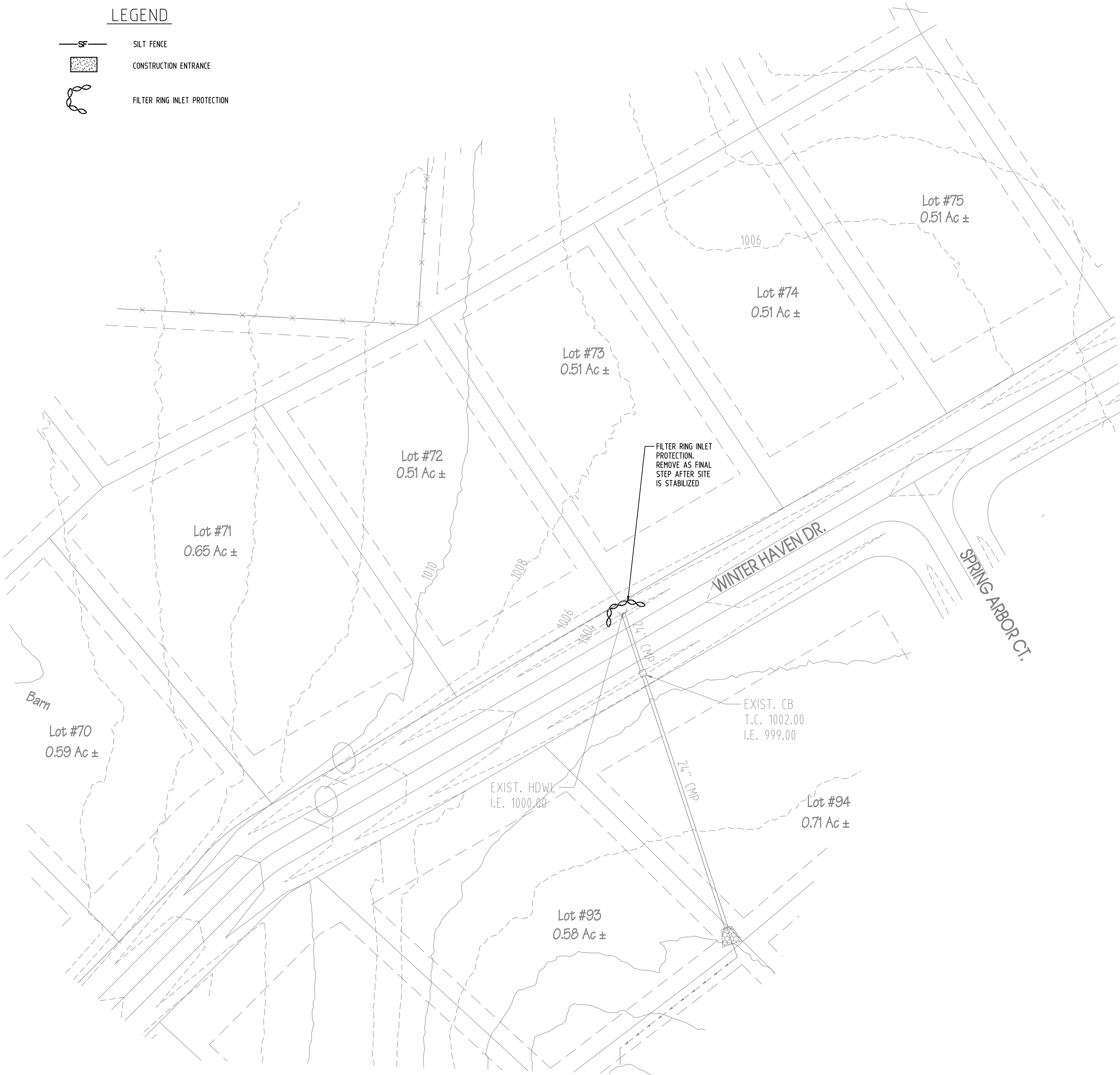
DATE: 1-11-22

C-1.1

LEGEND

- SF

SILT FENCE
- CONSTRUCTION ENTRANCE
- FILTER RING INLET PROTECTION



EROSION CONTROL PLAN - NOTES:

1. UNLESS OTHERWISE INDICATED, ALL VEGETATIVE AND STRUCTURAL EROSION AND SEDIMENT CONTROL PRACTICES WILL BE CONSTRUCTED AND MAINTAINED ACCORDING TO THE MINIMUM STANDARDS AND SPECIFICATIONS OF THE TENNESSEE EROSION AND SEDIMENT CONTROL MANUAL.
2. NOT USED.
3. ALL EROSION AND SEDIMENT CONTROL MEASURES ARE TO BE PLACED PRIOR TO OR AS THE FIRST STEP IN CLEARING.
4. A COPY OF THE APPROVED EROSION AND SEDIMENT CONTROL PLAN SHALL BE MAINTAINED ON THE SITE AT ALL TIMES.
5. PRIOR TO COMMENCING LAND DISTURBING ACTIVITIES IN AREAS OTHER THAN INDICATED ON THESE PLANS (INCLUDING, BUT NOT LIMITED TO, OFF-SITE BORROW OR WASTE AREAS), THE CONTRACTOR SHALL SUBMIT A SUPPLEMENTARY EROSION CONTROL PLAN TO THE OWNER FOR REVIEW AND APPROVAL BY THE PLAN APPROVING AUTHORITY.
6. THE CONTRACTOR IS RESPONSIBLE FOR INSTALLATION OF ANY ADDITIONAL EROSION CONTROL MEASURES NECESSARY TO PREVENT EROSION AND SEDIMENTATION AS DETERMINED BY THE PLAN APPROVING AUTHORITY.
7. ALL DISTURBED AREAS ARE TO DRAIN TO APPROVED SEDIMENT CONTROL MEASURES AT ALL TIMES DURING LAND DISTURBING ACTIVITIES AND DURING SITE DEVELOPMENT UNTIL FINAL STABILIZATION IS ACHIEVED.
8. DURING DEWATERING OPERATIONS, WATER WILL BE PUMPED INTO AN APPROVED FILTERING DEVICE.
9. THE CONTRACTOR SHALL INSPECT ALL EROSION CONTROL MEASURES PERIODICALLY AND AFTER EACH RUNOFF-PRODUCING RAINFALL EVENT. ANY NECESSARY REPAIRS OR CLEANUP REQUIRED TO MAINTAIN THE EFFECTIVENESS OF THE EROSION CONTROL DEVICES SHALL BE MADE IMMEDIATELY.
10. SEDIMENT WILL BE REMOVED FROM ALL EROSION AND SEDIMENT CONTROLS BEFORE THE DESIGN CAPACITY OF THE STRUCTURE HAS BEEN REDUCED BY 50% . LITTER, CONSTRUCTION DEBRIS, AND CONSTRUCTION CHEMICALS EXPOSED TO STORM WATER WILL BE PICKED UP PRIOR TO ANTICIPATED STORM EVENTS, OR OTHERWISE BE PREVENTED FROM BECOMING A POLLUTANT SOURCE FOR STORM WATER DISCHARGES.
11. STABILIZATION WILL BE ACCOMPLISHED AS SOON AS PRACTICAL AFTER ATTAINMENT OF FINAL GRADE AND NO LATER THAN (14) DAYS AFTER ATTAINING FINAL GRADE OR WHEN GRADING OPERATIONS CEASE FOR MORE THAN (14) DAYS. WHERE EARTH-DISTURBING ACTIVITY HAS TEMPORARILY CEASED, TEMPORARY STABILIZATION METHODS MAY INCLUDE SEED AND MULCH OR SEED AND EROSION CONTROL BLANKETS.
12. AREAS TO RECEIVE PERMANENT VEGETATION SHALL BE PROTECTED WITH EROSION CONTROL BLANKETS ON AREAS WITH SLOPES STEEPER THAN 3:1. AREAS 3:1 AND FLATTER SHALL BE PROTECTED WITH STRAW.
13. SITE OUTFALL 1 DRAINS TO THE EXISTING PIPE UNDER WINTER HAVEN DRIVE TOTAL DRAINAGE AREA FOR THE OUTFALL IS 2.9 ACRES. AVERAGE SLOPE OF SITE IS APPROX. 4%. SLOPE OF UNNAMED PIPE IS APPROX 3%.
14. NOT USED.
15. AFTER SITE IS CLEARED, GRUBBED AND SMOOTH GRADED, CONTRACTOR SHALL INSTALL PERMANENT SEEDING & LANDSCAPING. ALL TEMPORARY EROSION & SEDIMENT CONTROL DEVICES SHALL BE REMOVED IF SITE IS DEEMED STABILIZED, INCLUDING AREAS DISTURBED DURING TEMPORARY MEASURE REMOVAL. AT THIS TIME, CONTRACTOR SHALL COMPLETE AND SUBMIT THE NOTICE OF TERMINATION.
16. ANY STOCKPILE OF DIRT OR TOPSOIL SHALL RECEIVE TEMPORARY SEEDING. CONTRACTOR MAY CHOOSE ANY APPROPRIATE LOCATION FOR THE STOCKPILE AND SHALL INSTALL EROSION CONTROL DEVICES APPROPRIATE FOR THE LOCATION. CONTRACTOR SHALL KEEP RECORD OF ANY CHANGES TO THE EC PLANS/SWPPP ONSITE.

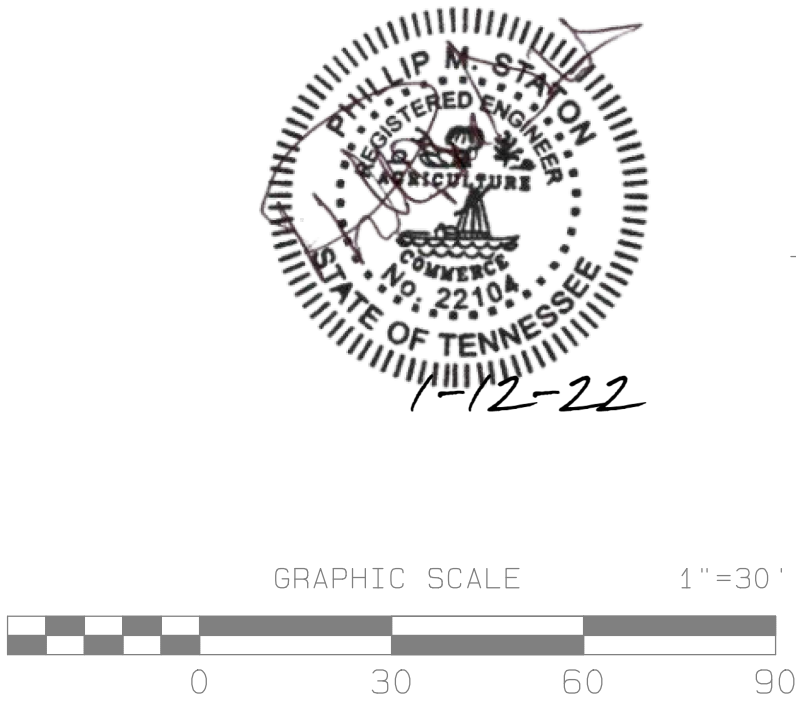
GENERAL NOTES

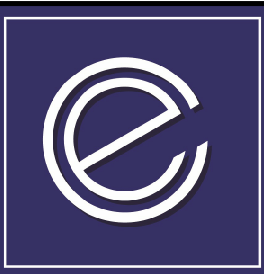
THE EROSION AND SEDIMENT CONTROLS SHOWN ON THIS DRAWING ARE A MINIMUM FOR A 2-YEAR 24-HOUR STORM EVENT.

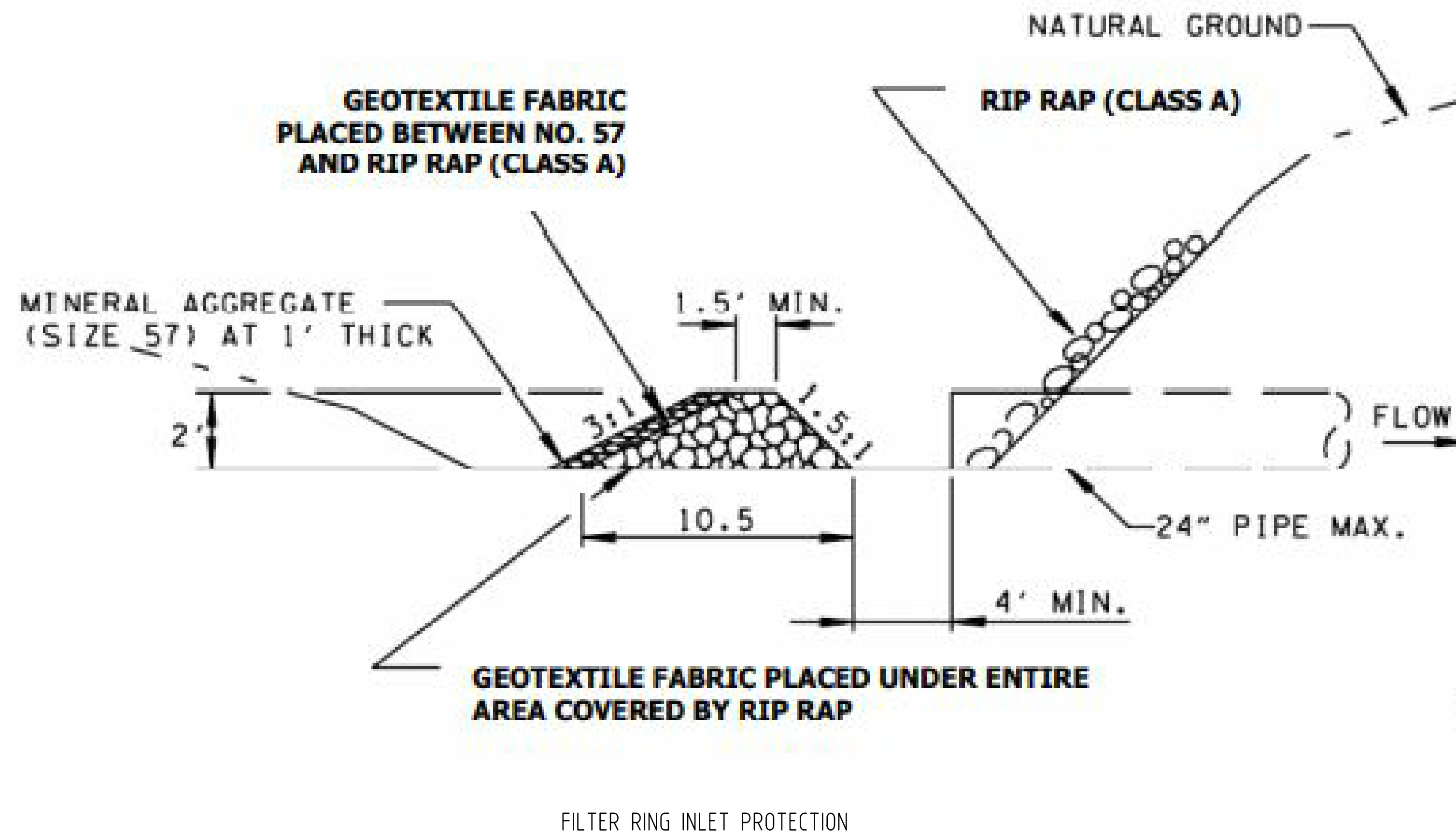
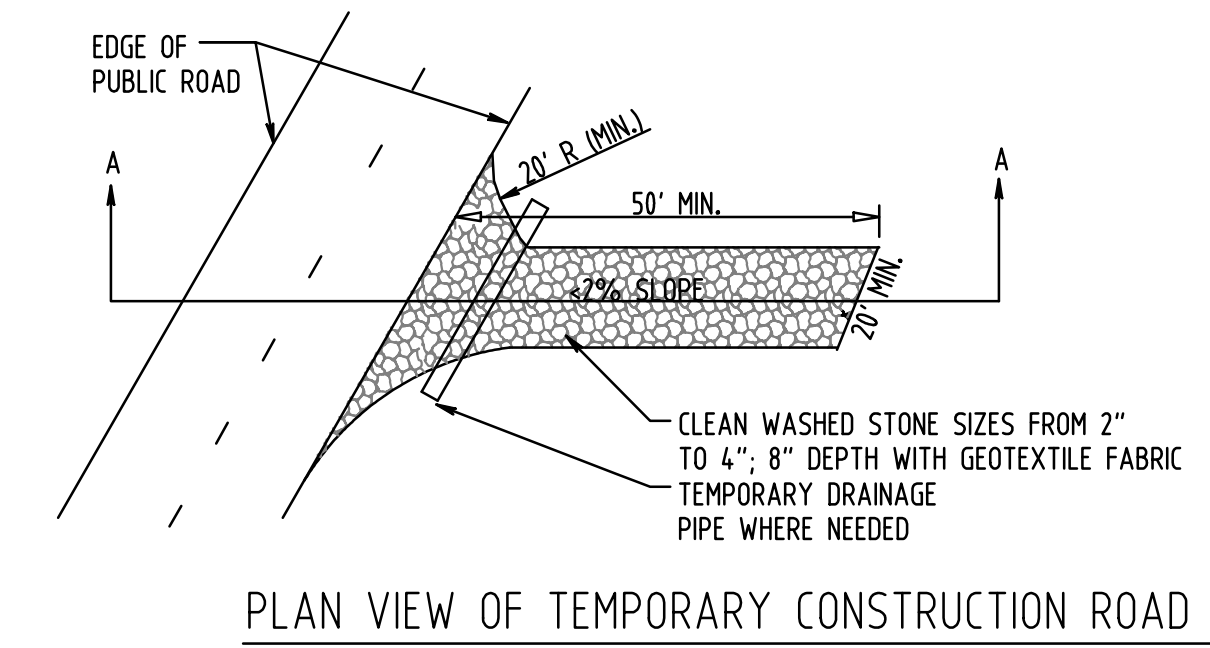
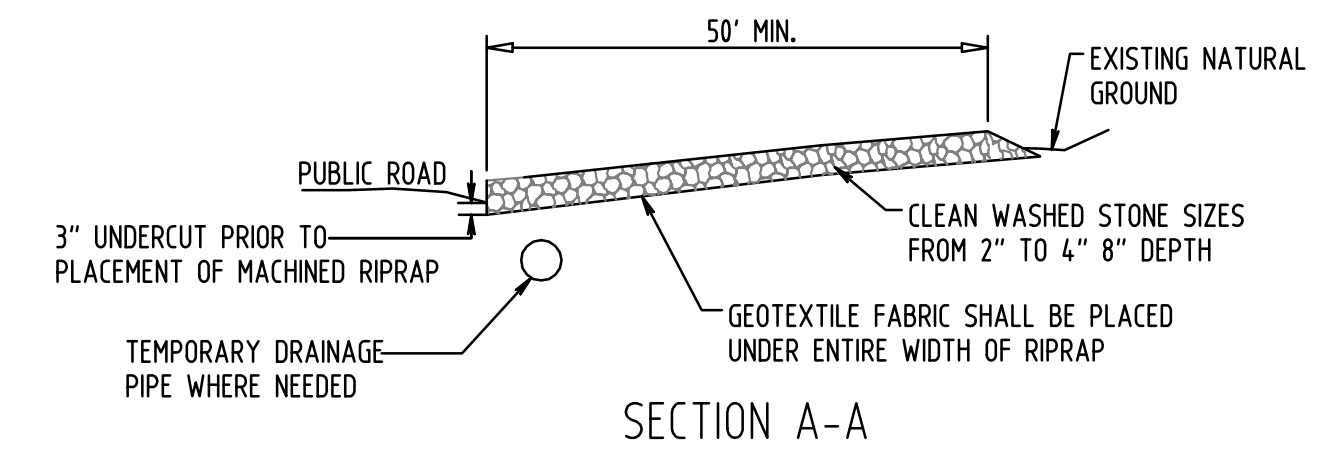
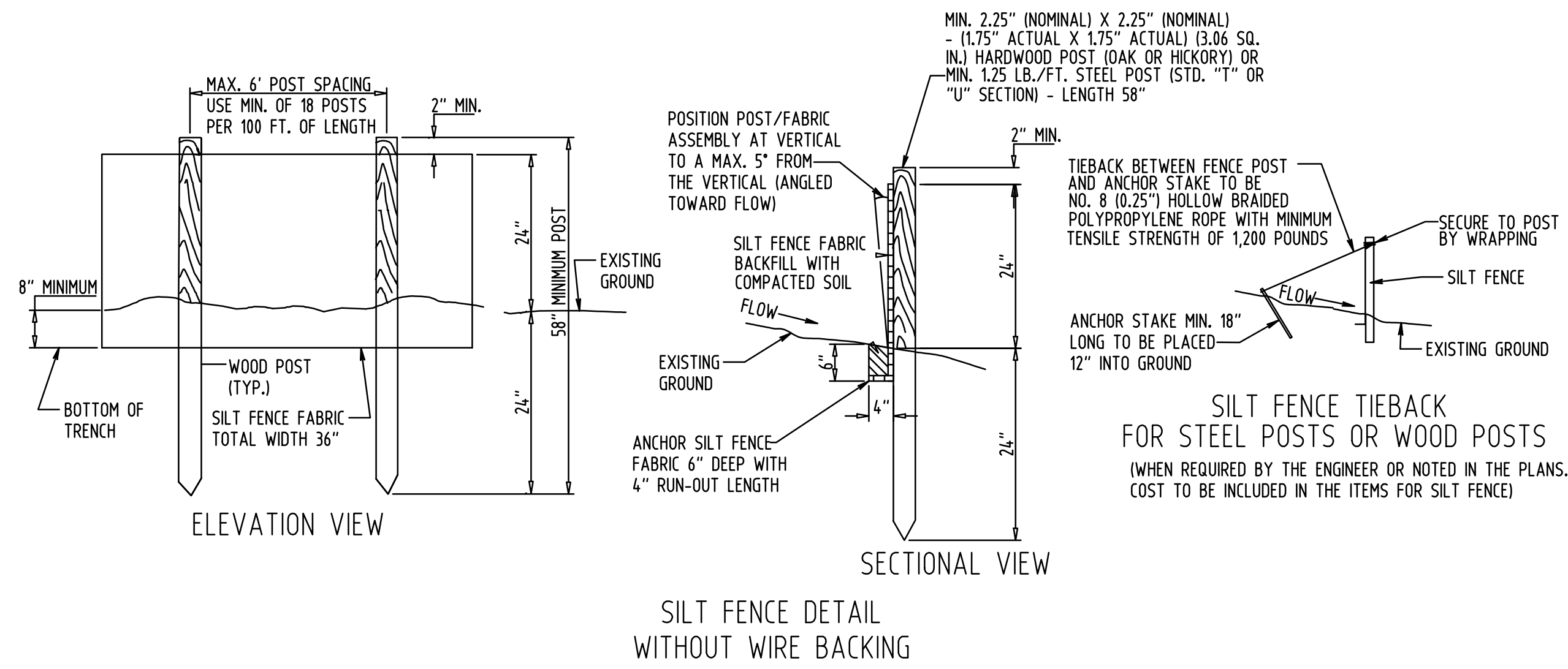
INSPECTIONS WILL BE REQUIRED TWICE EACH CALENDAR WEEK AT LEAST 72 HOURS APART. INSPECTION RESULTS AND NOTES ABOUT ANY REPAIRS MADE SHALL BE KEPT IN A LOG AND MAINTAINED ON SITE. CONSTRUCTION STORM WATER INSPECTION CERTIFICATIONS SHALL BE FILLED OUT AT EACH TIME OF INSPECTION (APPENDIX C OF THE GENERAL PERMIT) TO DOCUMENT INSPECTIONS. THE INSPECTOR MUST BE QUALIFIED, AS PER TDEC REQUIREMENTS OTHER DATA TO BE MAINTAINED INCLUDES: GRADING DATES, CEASE WORK DATES, STABILIZATION DATES, INSPECTION DATES, RAINFALL AMOUNTS, ETC.


STRAW BALES SHALL NOT BE USED AS A PRIMARY BMP; HOWEVER, THEY MAY BE USED AS A SUPPORT FOR OTHER BMP'S SUCH AS SILT FENCE.

ALL EROSION CONTROL MEASURES SHALL BE INSTALLED PER TDEC'S EROSION & SEDIMENT CONTROL HANDBOOK.



DATE	REVISIONS		BY
FINAL STORM WATER POLLUTION PREVENTION PLAN AUTUMN WOODS LOTS 71-74 3885 WINTER HAVEN DRIVE COOKEVILLE, TENNESSEE			
<div><div></div><div><div>CLINTON ENGINEERING</div><div>ENGINEERING & SURVEYING SERVICES</div><div>380 SOUTH LOWE AVENUE, SUITE 6</div><div>COOKEVILLE, TN 38501</div><div>931-372-0427</div></div></div>			
SCALE: 1"= 30'		DR JN	CHK PS
PROJ: 20-006B		DATE: 1-11-22	
		C-1.1A	



DATE	REVISIONS	BY
STORM WATER POLLUTION PREVENTION PLAN DETAILS AUTUMN WOODS LOTS 71-74 3885 WINTER HAVEN DRIVE COOKEVILLE, TN 38501		
 CLINTON ENGINEERING ENGINEERING & SURVEYING SERVICES 380 SOUTH LOWE AVENUE, SUITE 6 COOKEVILLE, TN 38501 931-372-0427		
SCALE: NO SCALE	OR JN OK PS	C-1.1B
PROJ: 20-006B	DATE: 1-11-22	